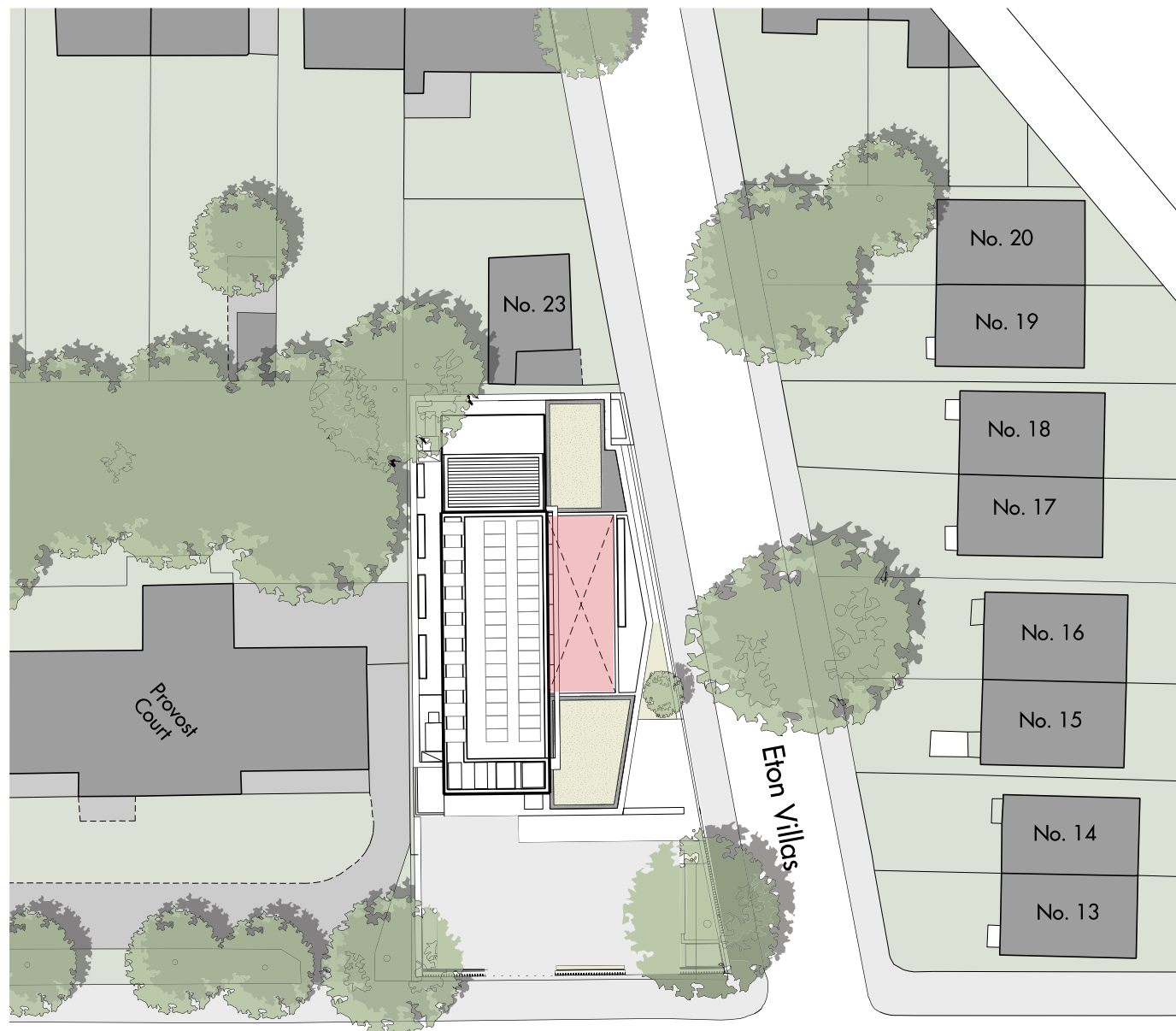


Cross Section - showing proposed location of awning in red



Site Plan - showing proposed location of awning in red

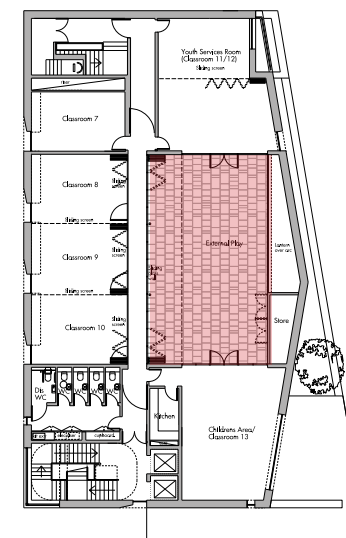
## Introduction

Members of the synagogue would like to add a retractable fabric awning at the second floor terrace level on the new building.

The structure will comprise a bronze metal frame with a retractable fabric awning to cover the external roof terrace at second floor.

If required the new awning and frame can be screened from views from the Eton Villas houses opposite with new planting located on the wide parapet. The planting will also be visible from street level.

The awning will also be used to cover a succah which will be erected on the terrace for the week long Jewish holiday of Sukkot. A succah has an open roof which needs to be covered from the elements when not in use during the festival.



Second floor terrace plan



Second floor terrace today



South Hampstead Synagogue looking west