

HORSE HOSPITAL TERRACE MATERIAL PALETTE\_PLANNING REF. 2020/5793/P & 2020/5850/REVISED: PLANNING FEEDBACK PALETTE

The material palette is to be read in conjunction with the following drawings submitted in application 2020/5793/P & 2020/5850/L:  
(Material Palette Number System coincides with the Material Key on drawings)

152\_A\_00\_01\_P4 - SITE PLAN

152\_A\_01\_01\_P7 - PROPOSED FIRST FLOOR PLAN

152\_A\_01\_02\_P6 - PROPOSED ROOF PLAN

152\_A\_02\_01\_P4 - PROPOSED ACCESS ROAD TO JUNIPER CRESCENT ELEVATION

152\_A\_02\_02\_P5 - PROPOSED CHALK FARM ROAD ELEVATION

152\_A\_02\_03\_P4 - PROPOSED NORTH YARD ELEVATION

152\_A\_02\_04\_P5 - PROPOSED MAKERS ALLEY ELEVATION

152\_A\_03\_01\_P4 - PROPOSED SECTIONS AA

152\_A\_03\_02\_P4 - PROPOSED SECTION BB

152\_A\_03\_03\_P4 - PROPOSED SECTION CC

152\_A\_03\_04\_P5 - PROPOSED SECTION DD

152\_A\_03\_05\_P5 - PROPOSED SECTION EE

152\_A\_07\_01\_P6 - DETAIL SECTION 02

152\_A\_07\_02\_P5 - DETAIL SECTION 03

152\_A\_07\_03\_P5 - DETAIL SECTION 04

152\_A\_07\_04\_P6 - DETAIL SECTION 05

152\_A\_07\_05\_P6 - DETAIL SECTION 06 & 09

152\_A\_07\_06\_P5 - DETAIL SECTION 07

152\_A\_07\_07\_P5 - DETAIL SECTION 08

152\_A\_07\_08\_P5 - DETAIL SECTION 10

150\_A\_07\_09\_P5 - PROPOSED COLUMN AND DATUM DETAIL

150\_A\_07\_10\_P5 - PROPOSED V -SHAPED COLUMN DETAIL

150\_A\_07\_11\_P5 - DETAIL SECTION 15

150\_A\_07\_12\_P5 - DETAIL SECTION 16



HORSE HOSPITAL TERRACE MATERIAL PALETTE\_PLANNING REF. 2020/5793/P & 2020/5850/L\_REVISID: PLANNING FEEDBACK PALETTE

- 01 Structural steel, galvanised after manufacture, blackened steel patina finish
- 02 Curved galvanised steel or GRP roof, blackened steel patina finish
- 03 Flat roofing construction laid to falls, blackened steel patina finish (both faces)
- 04 Exterior grade wall panel, blackened steel patina finish

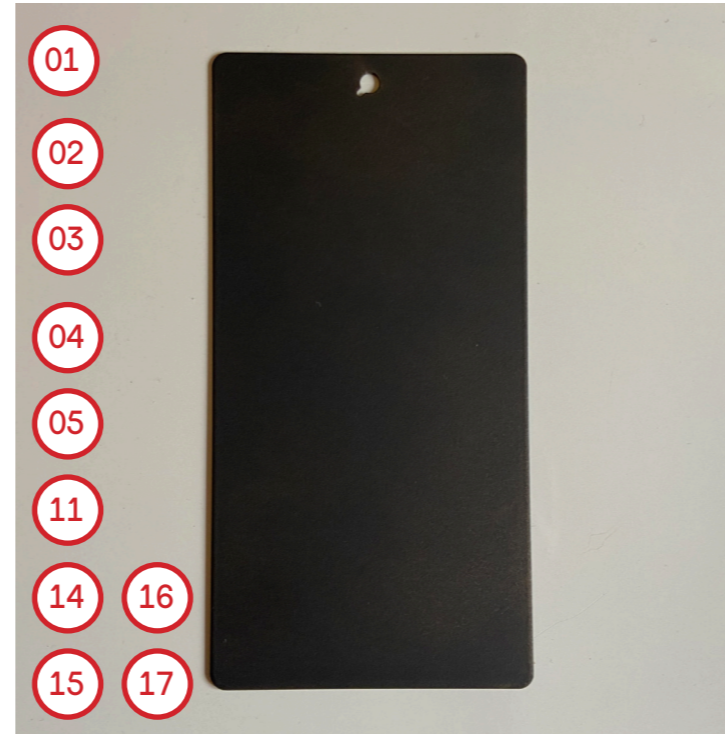
- 05 Ribbed metal sheet, blackened steel patina finish
- 06 Clear glazed roof with white frit installed with fall.
- 07 Clear glazed wall panels with frame
- 08 Retractable roof with white waterproof fabric

- 09 Clear PVC drop screens on rollers (manually operated)
- 10 Clear frameless glass balustrade, clamp fixed
- 11 Sheet metal capping, blackened steel patina finish
- 13 Existing granite setts (laid to falls)

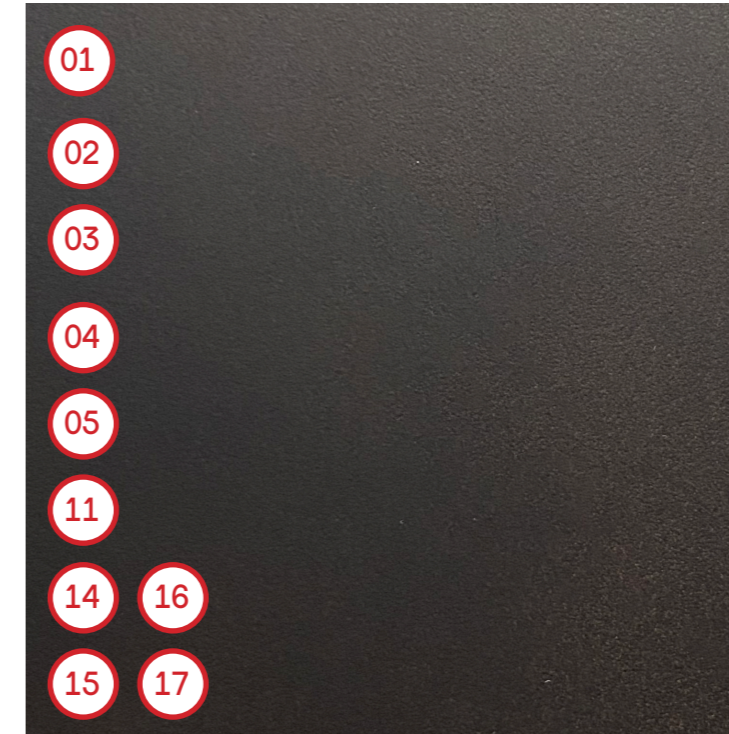
- 14 Galvanised cable tray, blackened steel patina finish
- 15 Flush stair safety nosing, blackened steel patina finish
- 16 Galvanised steel balustrade, blackened steel patina finish
- 17 Galvanised steel or GRP Planter, blackened steel patina finish
- 18 Self finish timber composite decking planks on aluminum bearers



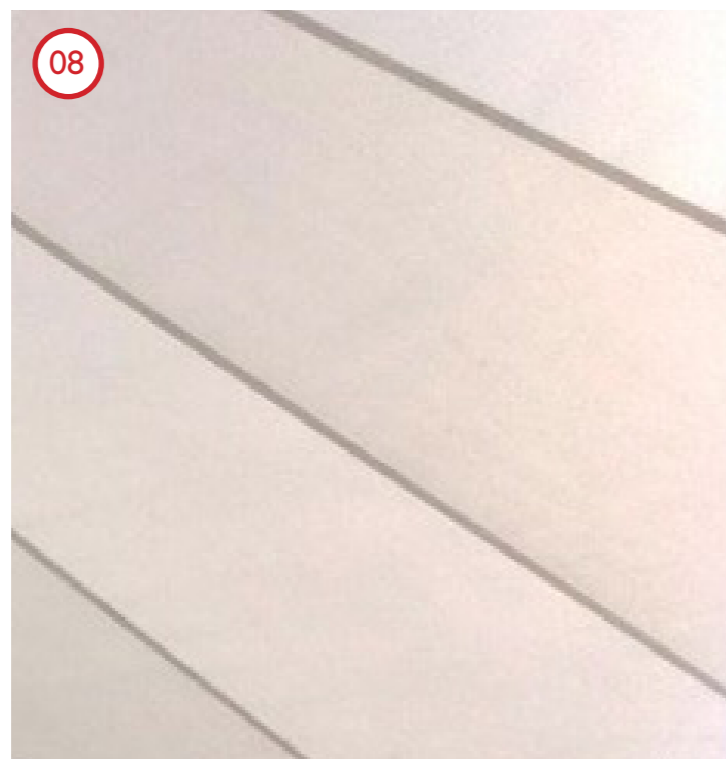
1 Composite Timber Saige Solid Decking - Rustic Range Walnut



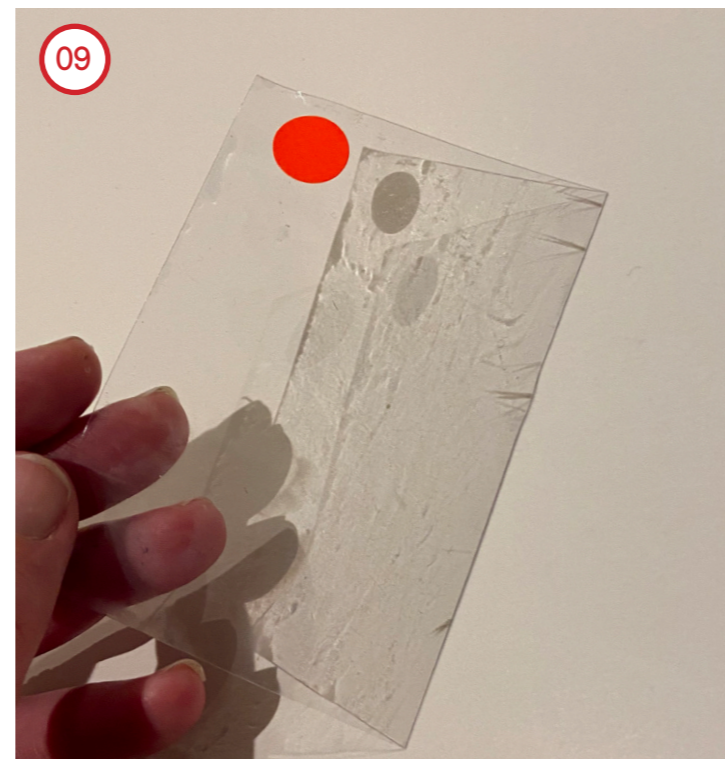
2 Blackened Steel Patina Finish



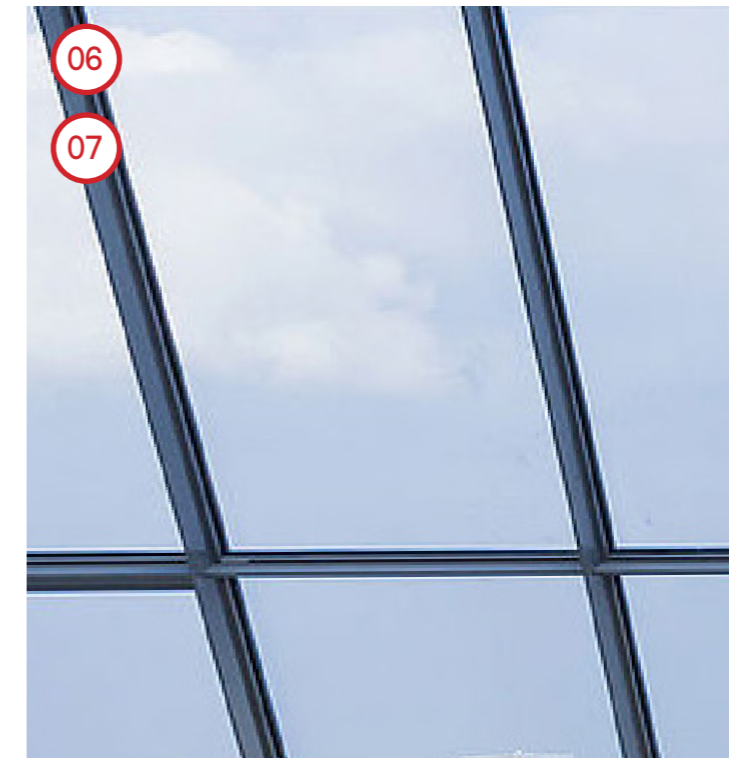
2 Blackened Steel Patina Finish (close up)



3 White Waterproof Roof Fabric



4 Clear PVC drop screens



5 Clear Glass with Frame to achieve 10kg/m<sup>2</sup>