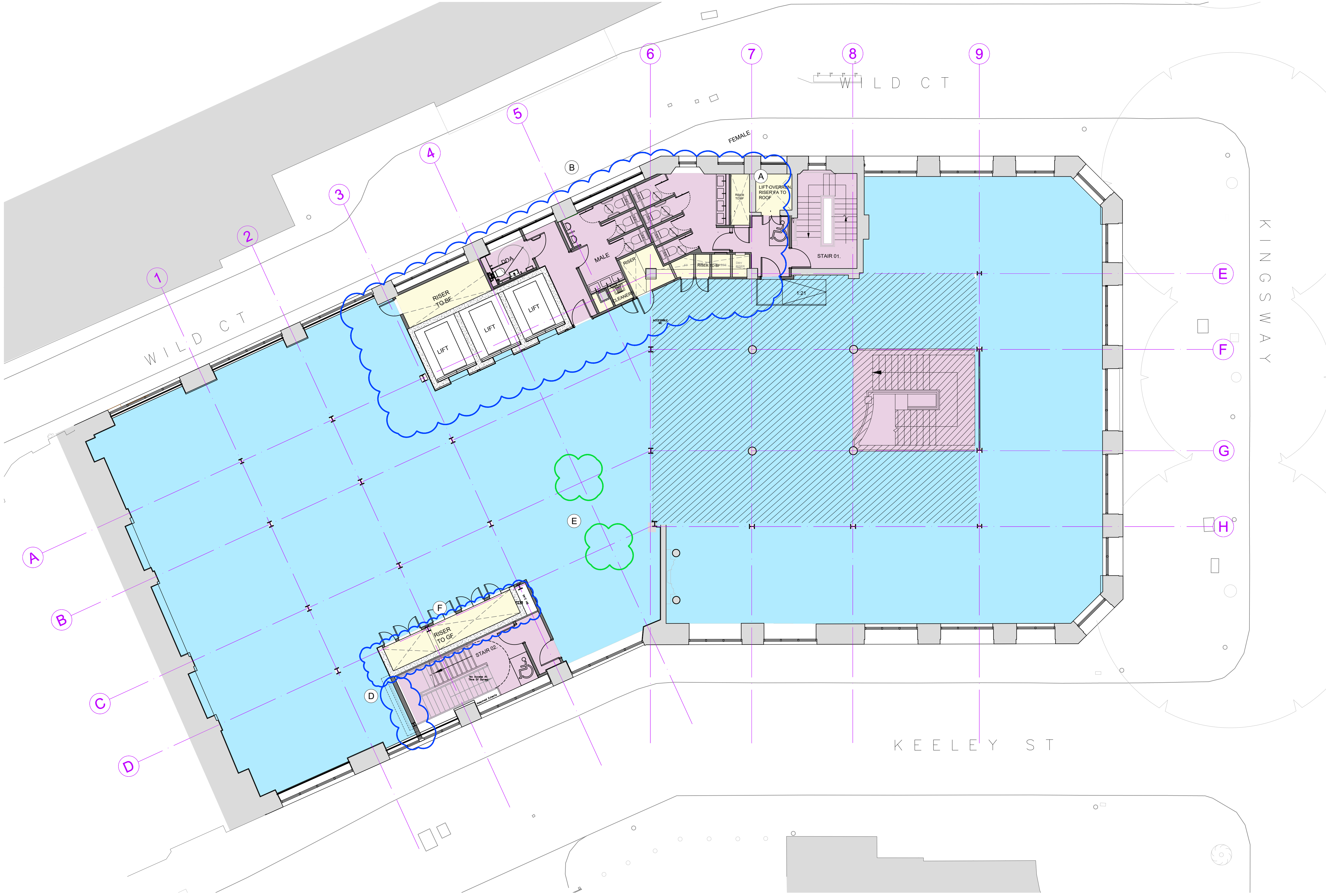


BARR GAZETAS



- KEY :
- Existing Walls
 - Proposed Walls
 - Class B1 - Business
 - Plant / Risers / Services
 - Common parts
 - New quality floor finish within the extent of the historic reception area
 - New quality floor finish on historic stair

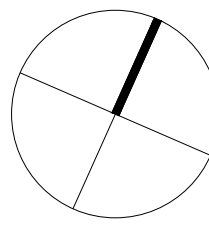
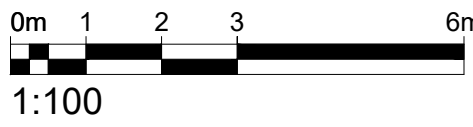
Indicates proposed changes to approved planning application 2019/6088/P and approved LBC 2019/6270/L

CHANGE AFFECTS HISTORIC FABRIC

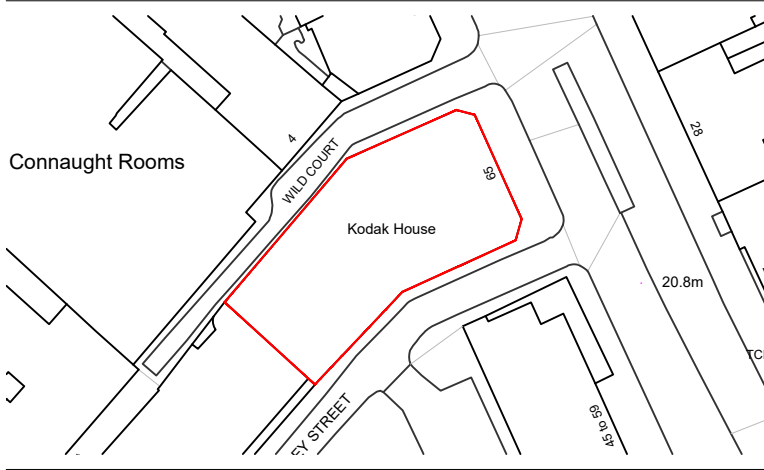
CHANGE AFFECTS MODERN FABRIC ONLY

- Description of changes
- A. F/F Lift omitted. Goods Lift overrun and riser to above.
 - B. Revised primary core layout. Lift banks shifts 300mm to GL/5 and WC's ;ayout amended to suit
 - C. --
 - D. Wall to stair core pushed back in line with riser. Note -No impact on historic fabric, or extent of slab demolition.
 - E. Columns removed in order to avoid substantial transfer structure at GF, and a reduction of 500mm headroom within the reception / entrance to the building. Refer also to HTS drawings and SK91.
 - F. Movement of structural core wall and riser position. Note - No impact on historic fabric, or extent of slab demolition.

Drawings to be read alongside Bidwells Heritage Statement for further detail and justifications of the changes affecting Historic fabric.



P6	Issued for Planning	AC	12.03.21
P5	Issued for Planning	AC	29.01.21
P4	Issued for Planning	AC	28.11.19
Rev.	Description.	By	Date



Client				
Kings Keeley Limited C/o Clearbell Capital LLP				
Project				
65 Kingsway - Base Scheme				
Title				
Proposed First Floor Plan				
Status	Purpose of Issue			RIBA stage
S2	For Planning			2
Project No.	Drawn	Checked	Scale	Rev.
1914	FB	TJ	1:100 @ A1 1:200 @ A3	P6

1914-BG-01-01-DR-A-20.203

Do not scale from this drawing. The Contractor is to take and check all dimensions on site before work commences. Discrepancies must be reported to the Architect. Subcontractors must verify all dimensions on site before making a shop drawing or commencing manufacturing. This drawing is copyright. ©

© Copyright Barr Gazetas Ltd.
A 10 Heddon Street, London, W1B 4BG
T 0207 638 5581
W www.barrgazetas.com

01 Proposed First Floor Plan

20.203 1:100@A1, 1:200@A3