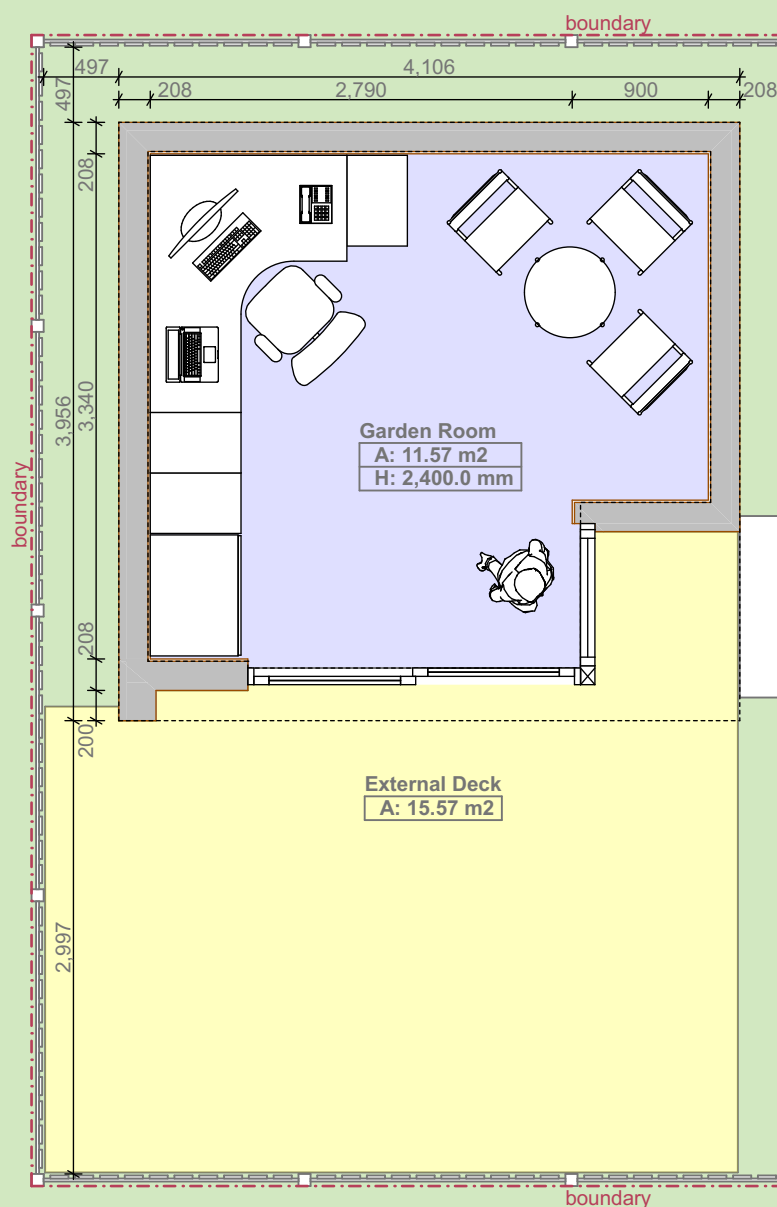




## Visualisations : NTS at A4

Rev.A / 07.04.2021 / ARanete / Amendments to layout to incorporate site features; deck extended.

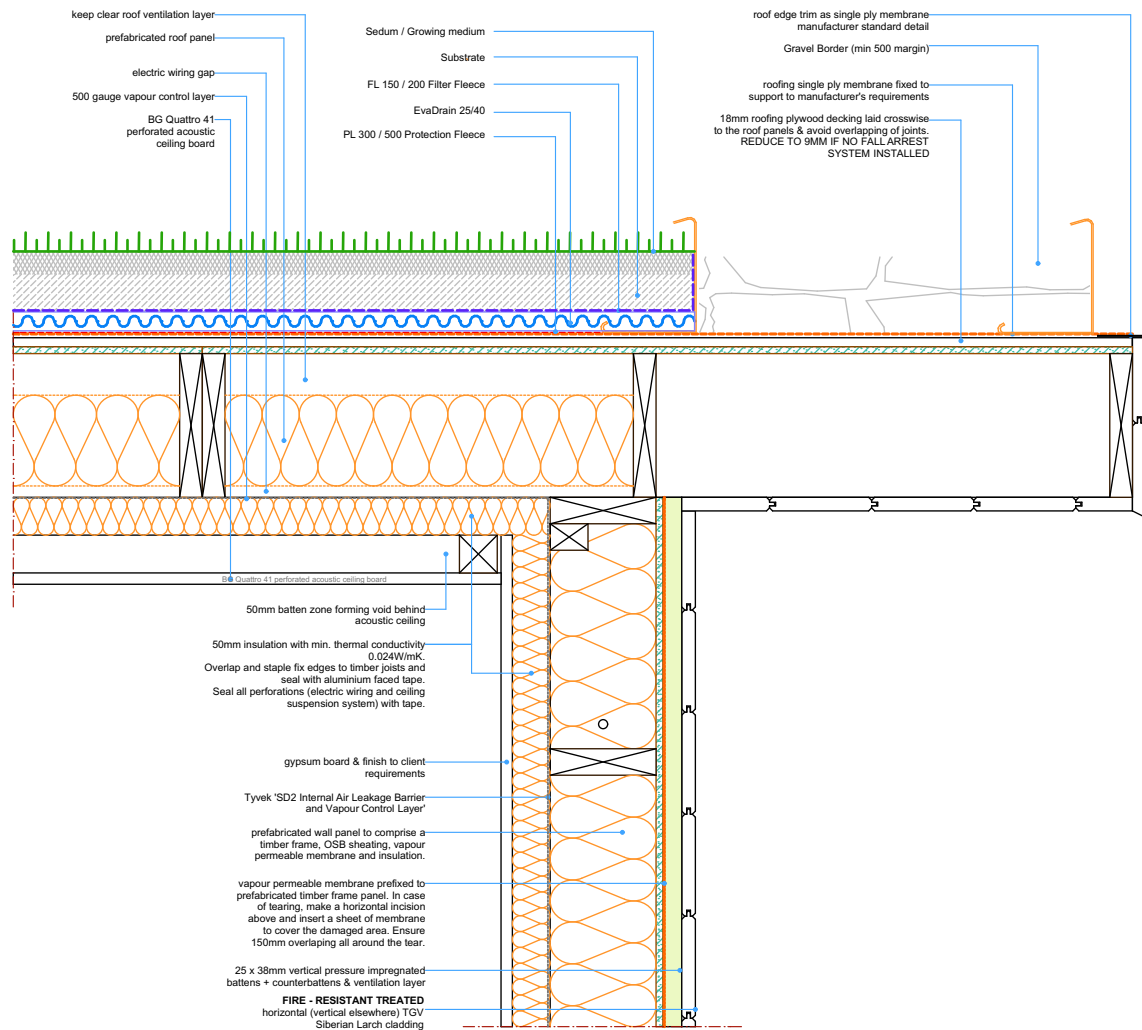
Site conditions are indicative only.
Indicative plan layout. Furniture shown for purposes of illustration.
Internal structural height: 2400mm
Total Floor Area (including linings and partitions): 11.57sqm
Horizontal timber cladding.
Aluminium window frames.
Sedum roof.



**Plan : 1:50 at A4**

Rev.A / 07.04.2021 / ARanete / Amendments to layout to incorporate site features; deck extended.

**Specification:** (1) Cable for Data & TV installation run only (link to source by others to ensure reliability of connection). (2) Connection of electrics to mains, run above ground (uprating of main electric supply by others, if required, to match power requirement in new building). (3) 1 x External socket. (4) 6 x Double internal sockets. (5) 4 x External LED lights on remote sensor. (6) Mains smoke alarm. (7) Powder coated, double glazed, Aluminium windows and doors as per drawings (colour RAL7016 dark grey). (8) 12 x Interior ceiling mounted LED down lights. (9) Heating via slim-line wall mounted electric convactor unit. Air-conditioning with or without heating available upon request. (10) Engineered Oak flooring or similar, 15mm thickness. (11) Provision of concrete pad/pier foundations or engineered galvanised steel screw piles as deemed feasible. (12) Painted plaster skim finish colour white. (13) Options invited for consideration: (-) Air-Conditioning with Heating - £ 2,240.00 (-) SunPipes - round roof fitting with mirror finish lining that channels and focusses natural light inside - £ 350.00 (-) Live Sedum roof from £ 160.00 per sqm



monopitch roof to side wall junction (horizontal cladding)

Typical Sedum Roof Detail : 1:10 at A4