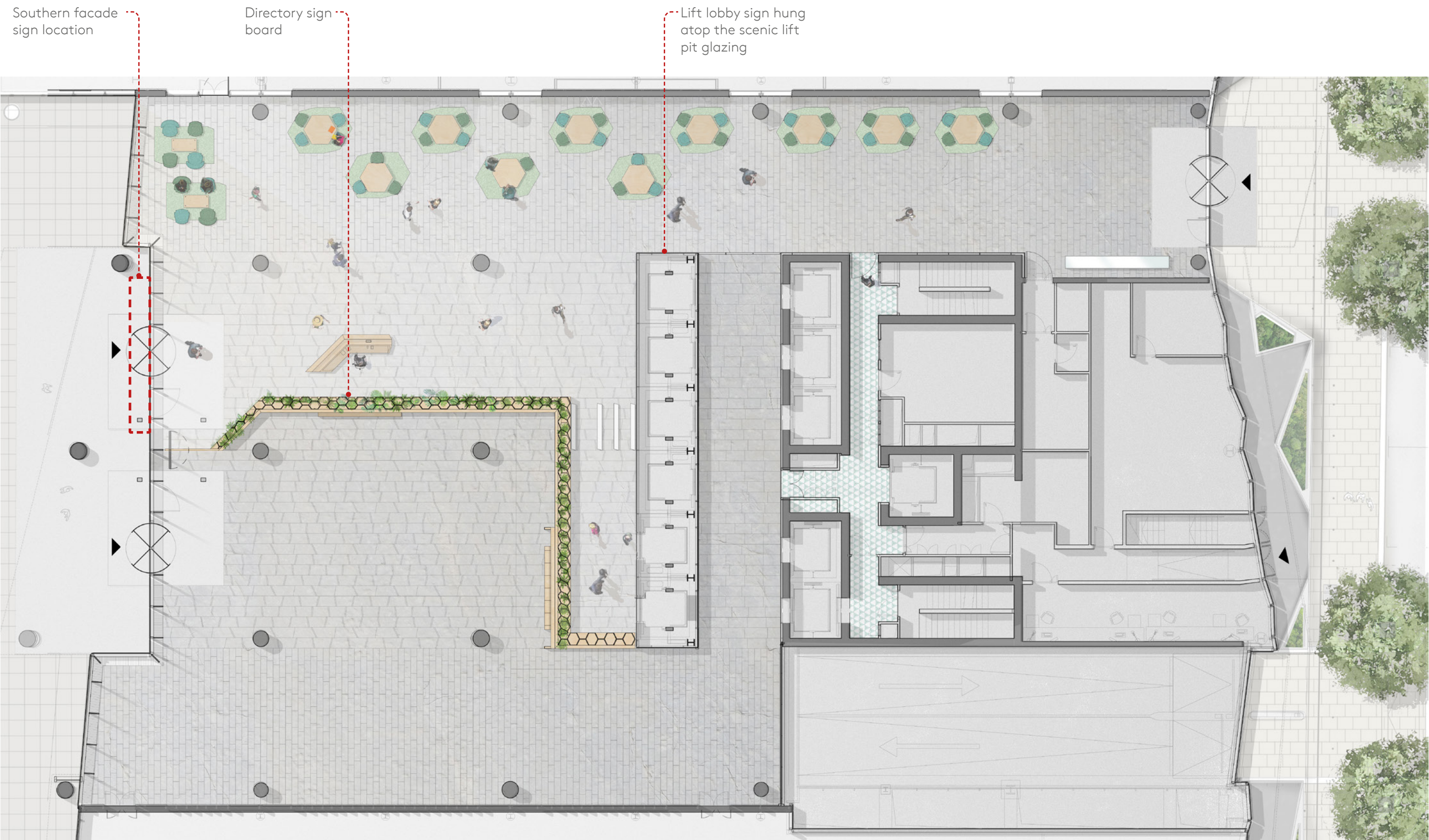


—British Land

10 Brock Street External Signage  
Concept Options R04

# Wayfinding locations—





# Southern Facade Sign—

## Materials

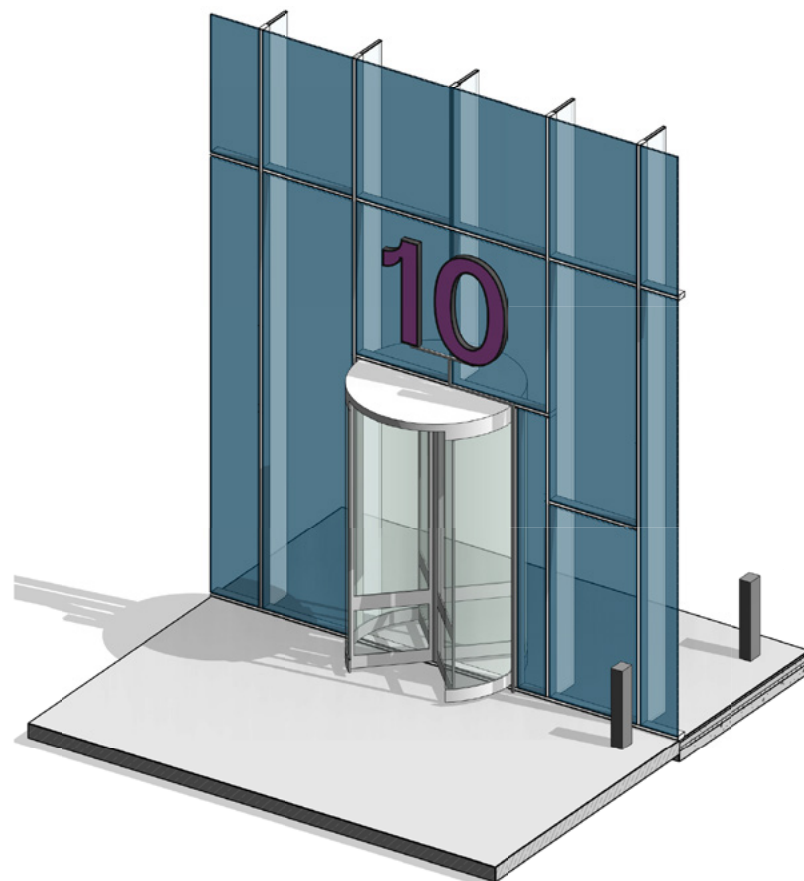
Dark grey powder-coated aluminium unit with an opaque perspex panel. LED lights will be installed within the text units with a controller that can vary the RGB to any colour.

## Fixing Type

A silicone stencil with fixing brackets will be bonded to the glazing system and the metal units will then be hung to the brackets.

## Characteristics

- No visible structural supports.
- Durable.
- Self-lit with full range RGB LEDs.



01. Isometric view of south entrance door



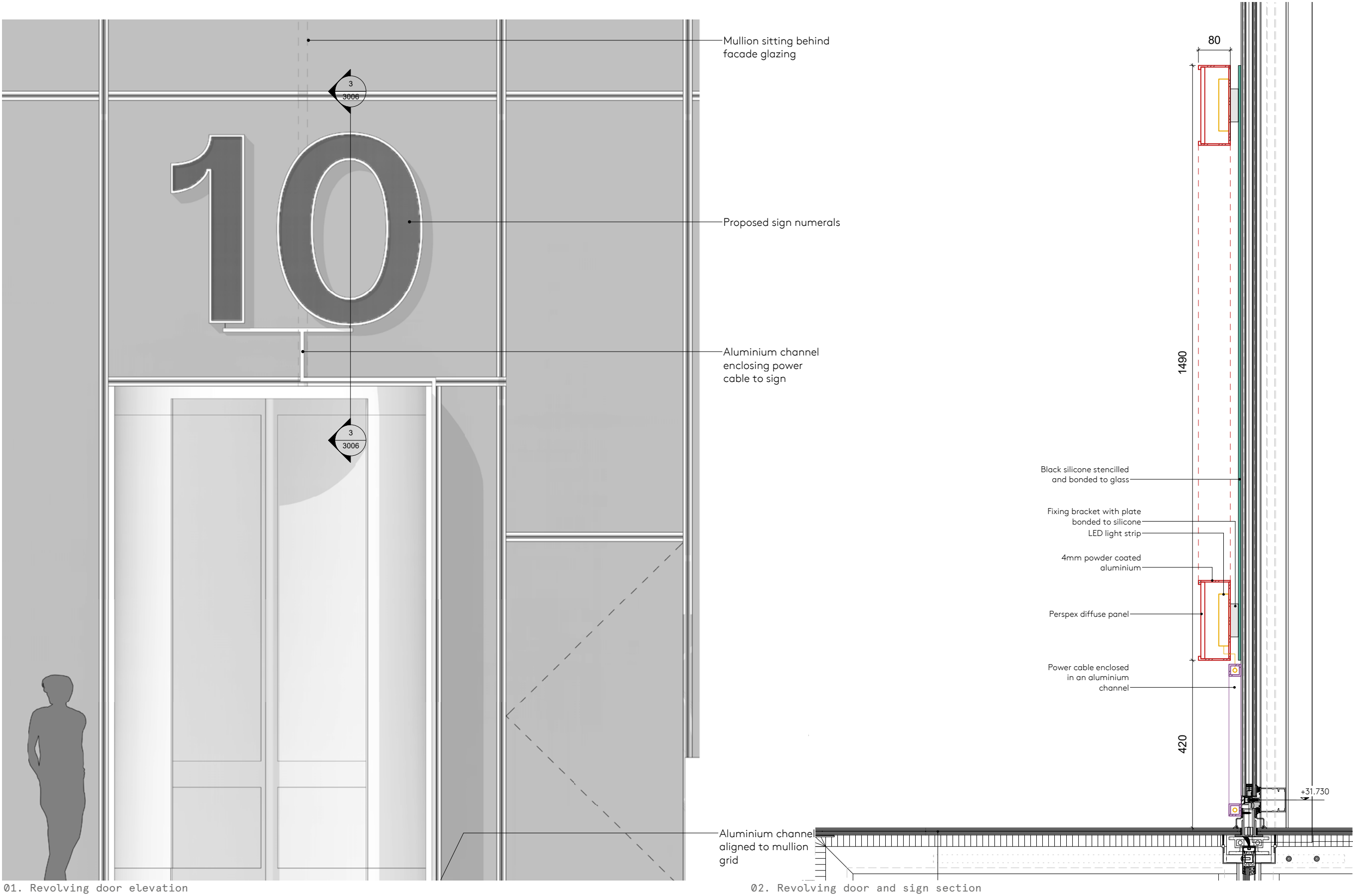
02. External sign and facade viewed during daylight



03. External sign and facade viewed at night



# Southern Facade Section—



Southern Facade - Sign in Shade—



Signage with default white LED



Signage with yellow LED variant



Signage with purple LED variant

Southern Facade - Sign in Direct Sunlight—



Signage with default white LED



Signage with yellow LED variant



Signage with purple LED variant



Southern Facade - Sign at night—



Signage with default white LED

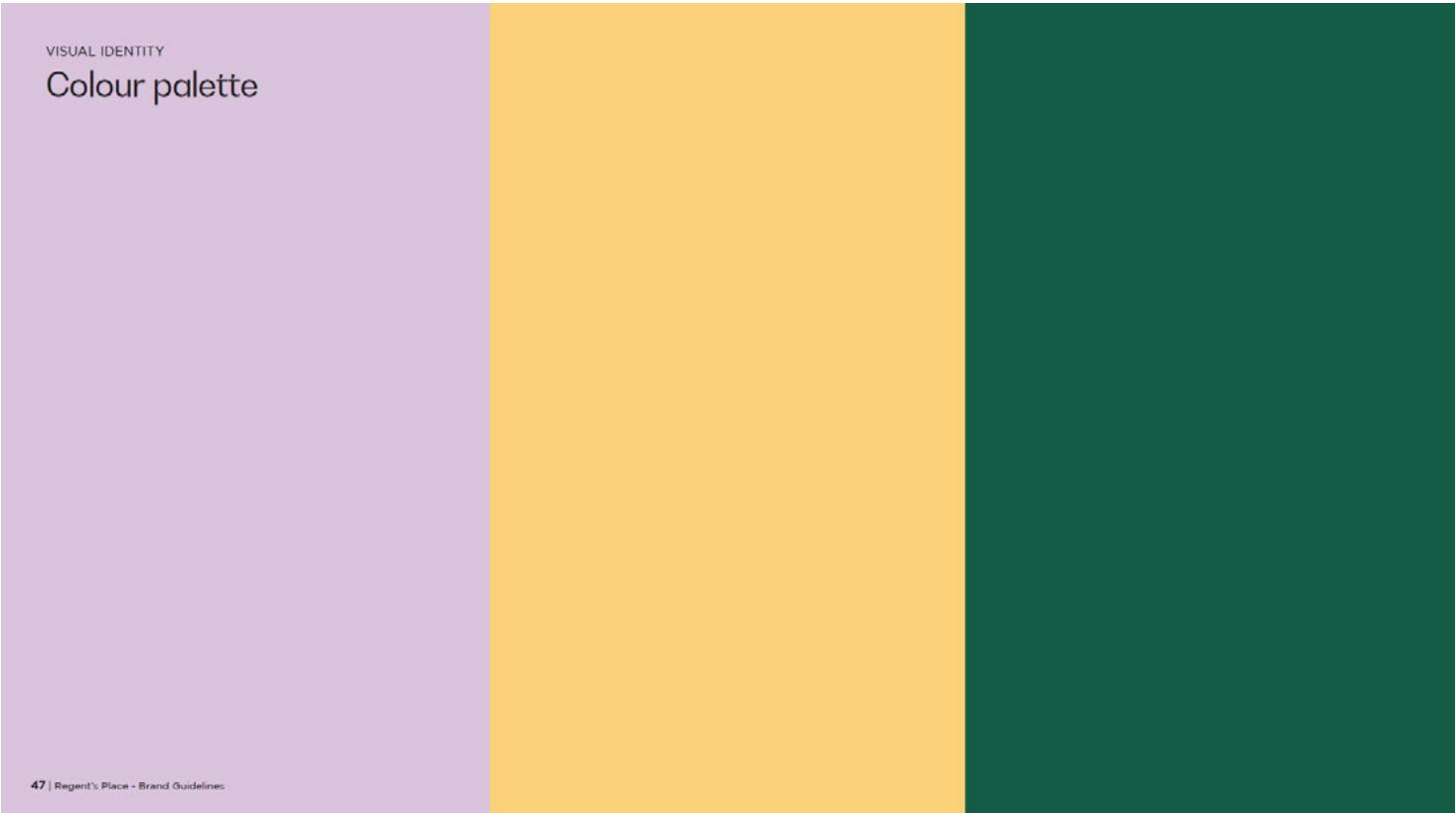


Signage with yellow LED variant



Signage with purple LED variant

# Material References—



01. Reference colour palette extracted from Regent's Place Brand Guidelines



02. Powder-coated aluminium samples



03. Perspex panels with lights