

Apt

Medius House

Planning Condition 4 – Bricks & Aluminium Cladding

01 April 2021

Project Title Medius House	Project Number 18013
Document Name PlanningCondition4-Bricks&AluminiumCladding	Date 01 April 2021
Status Approved for issue	Revision 00
Author VP	Reviewed by VP

Contents

1.0
Introduction

Purpose of the Document

7

2.0
Particulars and Samples
of Materials

Finishes and Materials Codes

10

Finishes and Material Codes

11

Cladding

12

Cladding

13

Cladding

14

3.0
Material Locations

North Elevation

16

East Elevation

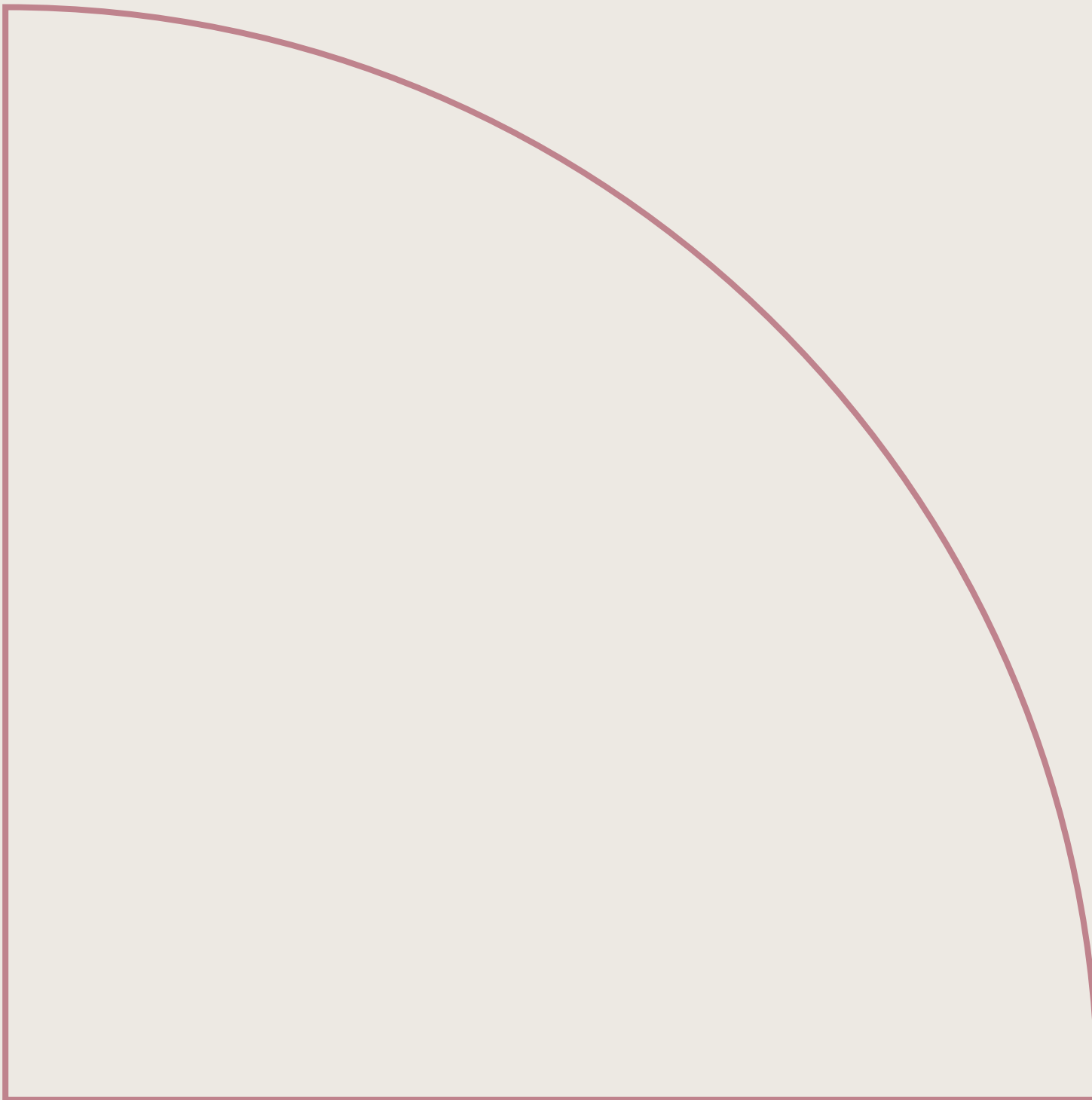
17

South Elevation

18

West Elevation

19



1.0

Introduction

Purpose of the Document

This document presents the particulars of materials proposed to be used on the external faces of Medius House, in line with the requirements of Condition 4, as highlighted below.

This report will be seeking a part discharge of the above condition for the bricks and aluminium cladding.

Planning Condition No. 4 - Detailed drawings/samples

Detailed drawings, or samples of materials as appropriate, in respect of the following, shall be submitted to and approved in writing by the Council before the relevant part of the work within the relevant phase (a) Castlewood House; (b) Medius House is begun:

a) Plan, elevation and section drawings, including jambs, head and cill, of all external windows, doors and balustrades at a scale of 1:10.

b) Samples and manufacturer's details at a scale of 1:10, of all facing materials including windows and door frames, glazing, balustrades and brickwork with a full scale sample panel of brickwork, spandrel panel, glazing and balustrade elements of no less than 1m by 1m including junction window openings demonstrating the proposed colour, texture, face-bond and pointing.

A sample panel of all facing materials shall be erected on-site and approved by the Council before the relevant parts of the work are commenced and the development shall be carried out in accordance with the approval given. The relevant part of the works shall then be carried in accordance with the approved details.





2.0

Particulars and
Samples of Materials

Finishes and Materials Codes

The approved drawings note materials and finishes for the proposals. The detailed design proposals have been developed in line with the approved these requirements and a series of finishes codes has been developed for ease of reference within the project.

These codes have been referenced against the approved plan notation to the left and are described in more detail below, subdivided in the following categories:

- Cladding
- Windows and glazing
- Doors
- Miscellaneous

On the following pages, approved and general arrangement drawings are reproduced alongside the relevant fishes codes for ease of reference.

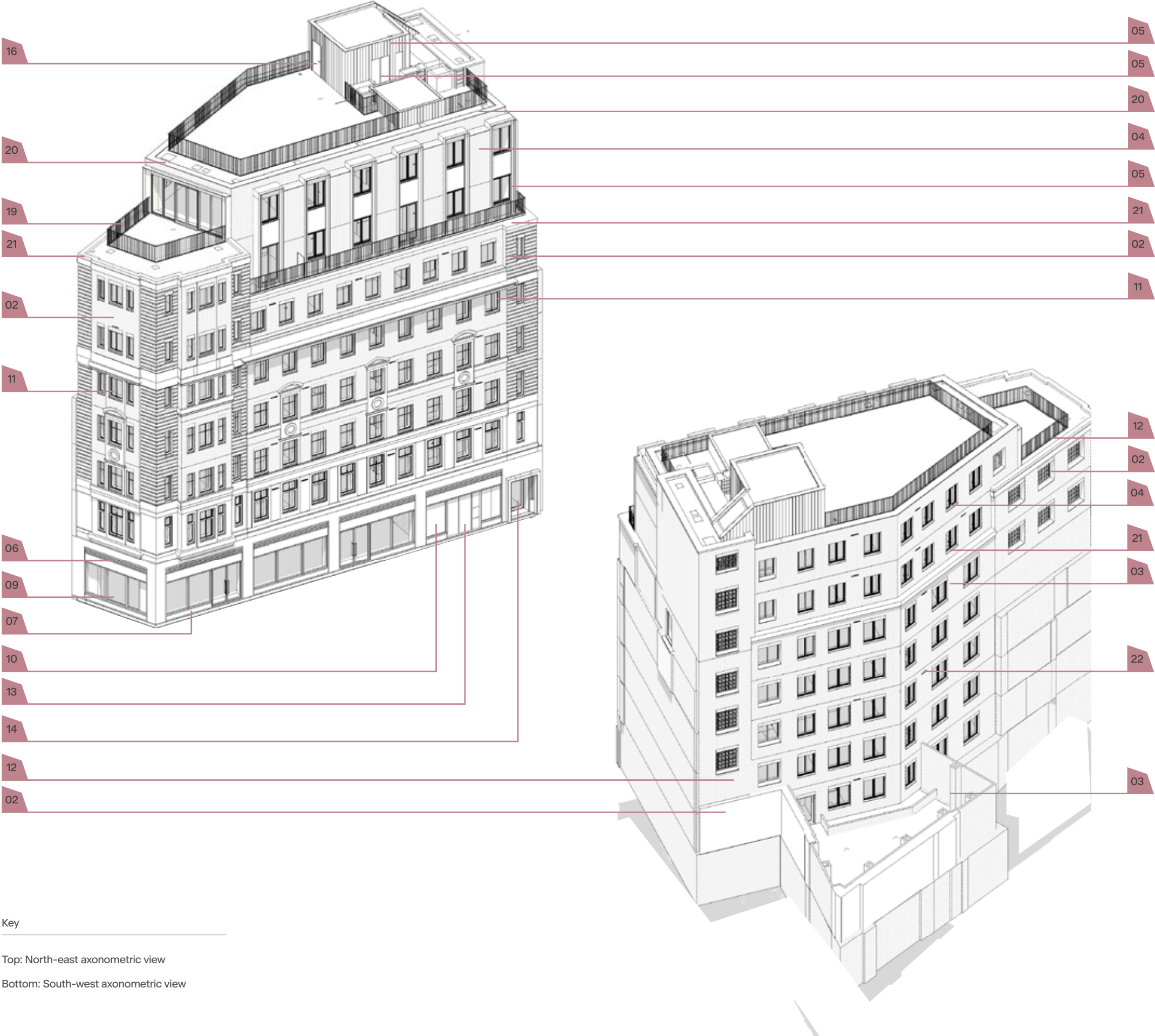
	Code	Description	Location - Typical
Cladding	ALT-301	Retained façade to to be cleaned and made good	North and East elevation (Level 00-05)
	BRK-101	Red brick matching retained façade	North and East elevation (Level 05-07) South elevation (Level 02-08) West elevation (Level 04-08)
	BRK-102	Buff brick	South elevation (Level 01-06)
	BRK-103	Black brick	North, East and South elevation (Level 06-08)
	EWS-702	Aluminium cladding and frame	North elevation (Level 06-08) East elevation (Level 07) All elevations (Roof pod and lift overrun)
	EWS-701	Aluminium louvres	North and East elevation (Level 00)
	EWS-801	Granite plinth	North and East elevation (Level 00)
Windows and glazing	EWS-120	Retail glazing and framing	North and East elevation (Level 00)
	EWS-705	Backpainted glazing and framing	North elevation (Level 00)
	EWS-205	Residential glazing and aluminium framing	All elevations
	EWS-201	Residential glazing and steel framing EI90	South elevation
	GL-101	FR90 glazing	South elevation
	GL-102	Retail and residential glazing	All elevations
	GL-104	Backpainted glazing	North elevation (Level 00)

	Code	Description	Location - Typical
Doors	DRS-215	Aluminium cladded metal door	North elevation (Level 00)
	DRS-301	Residential aluminium frame glazed door	North and South elevation (Level 00 and 01)
	DRS-303	Retail aluminium frame glazed door	North and East elevation (Level 00)
	DRS-205	Aluminium cladded metal door	East elevation (Pod)
	DRS-802	Metal frame aluminium dry riser door	North elevation (Level 00)
	DRS-803	Metal frame aluminium cladded riser door	North elevation (Pod)
Miscellaneous	BAL-105	External metal balustrade and handrail	Terraces leval 06, 07, 08
	AM-101	Aluminium Capping / Coping	Level 08 terrace
	CON-401	Precast concrete matching existing	Level 06, 07 and 08
	AM-305	MVHR outlet/inlet aluminium PPC finish grille	North, South and East elevations

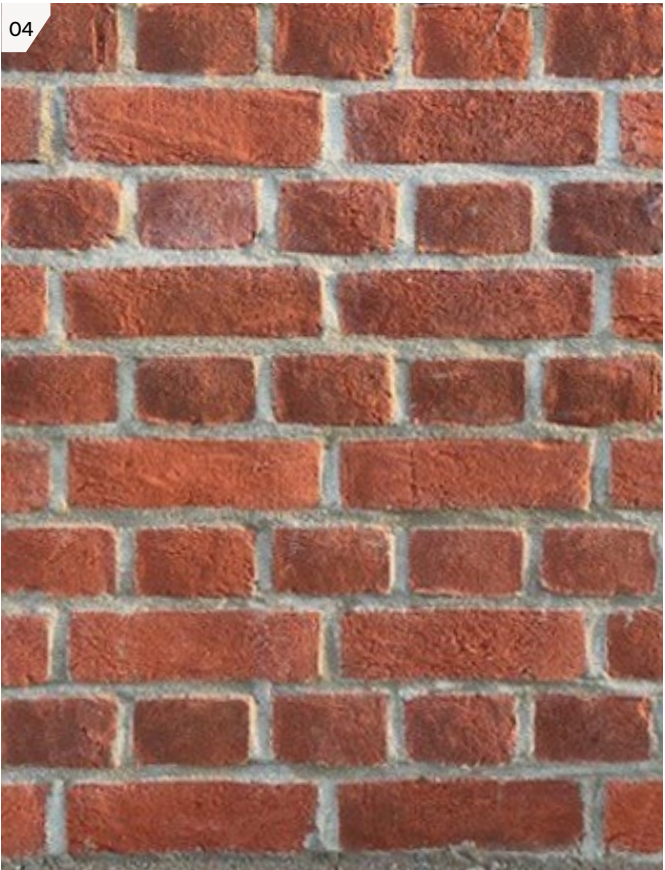
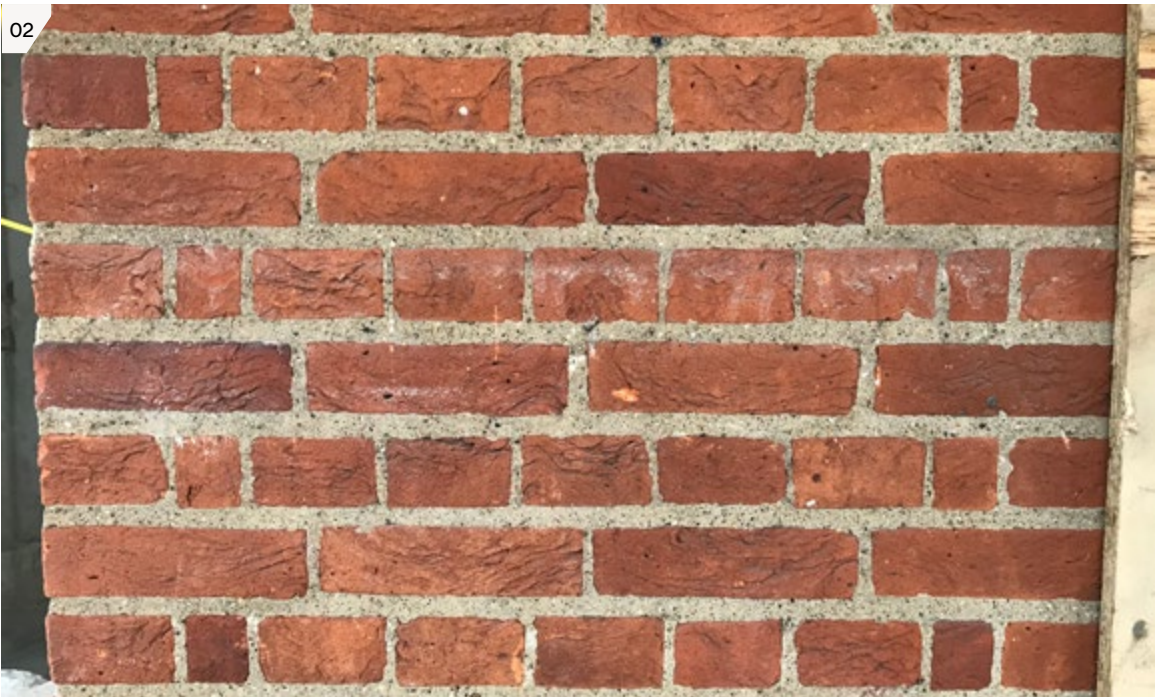
Bold elements sampled within this report

Finishes and Material Codes

- 01. AL-301 Retained facade to be cleaned and made good
- 02. BRK-101 Red brick matching retained façade
- 03. BRK-102 Buff brick
- 04. BRK-402 Black brick
- 05. EWS-702 Aluminium cladding and frame
- 06. EWS-701 Aluminium louvres
- 07. EWS-801 Granite plinth
- 09. EWS-120 Retail glazing and framing
- 10. EWS-705 Backpainted glazing and framing
- 11. EWS-205 Residential glazing and aluminium framing
- 12. EWS-201 Residential glazing and steel framing EI90
- 13. DRS-215 Aluminium cladded metal door
- 14. DRS-301 Residential aluminium frame glazed door
- 15. DRS-303 Retail aluminium frame glazed door
- 16. DRS-205 Aluminium cladded metal door
- 17. DRS-802 Metal frame aluminium dry riser door
- 18. DRS-803 Metal frame aluminium cladded riser door
- 19. BAL-105 External metal balustrade and handrail
- 20. AM-101 Aluminium Capping / Coping
- 21. CON-401 Precast concrete matching existing
- 22. AM-305 MVHR outlet/inlet aluminium PPC finish grille



Cladding



- Key
- 01. ALT-301 & BRK-101 Red restoration brick against existing facade
 - 02. Existing facade close up
 - 03. BRK-101 Red restoration brick sample
 - 04. BRK-101 Red restoration brick sample close up

Cladding

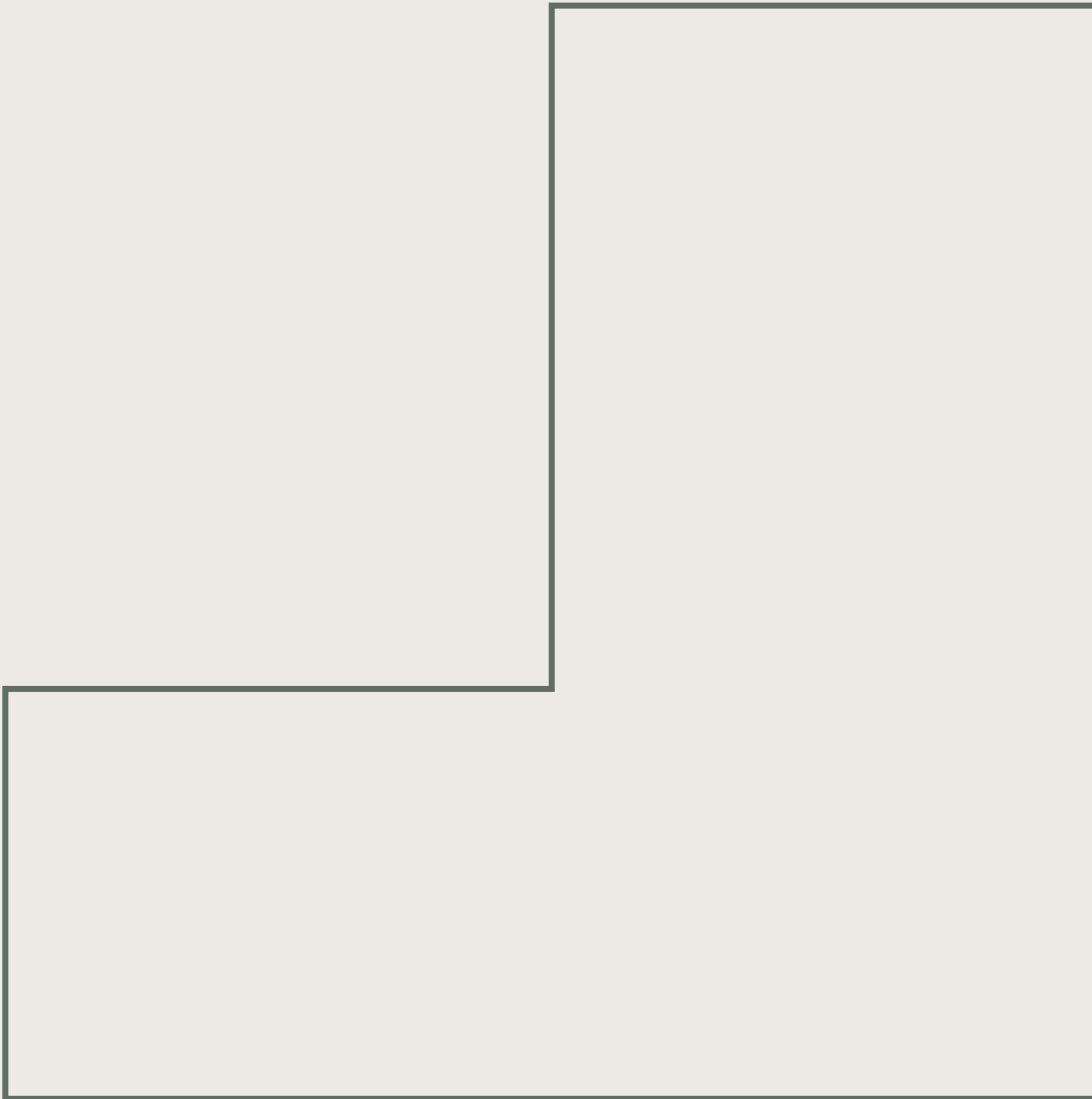


- Key
- 01. BRK-103 Black brick sample
 - 02. BRK-103 Black brick sample close up
 - 03. BRK-102 Buff brick sample
 - 04. BRK-102 Buff brick sample close up

Cladding



- Key
- 01. BRK-103 Black brick
 - 02. BRK-102 Buff brick
 - 03. BRK-101 Red brick
 - 04. EWS-702 Aluminium cladding and frame
DRS-205 Aluminium clad metal door finish
DRS-803 Metal frame aluminium clad riser door finish
AM-101 Aluminium capping / coping



3.0

Material Locations

North Elevation

Key

- ALT-301 Retained facade to be cleaned and made good
- BRK-101 Red brick matching retained facade
- BRK-103 Black brick
- EWS-702 Aluminium cladding and frame
- DRS-215 Aluminium clad metal door
- DRS-205 Aluminium clad metal door finish
- DRS-802 Metal frame aluminium dry riser door
- DRS-803 Metal frame aluminium clad riser door finish
- AM-101 Aluminium capping / coping



East Elevation

Key

ALT-301

Retained facade to be cleaned and made good

BRK-101

Red brick matching retained facade

BRK-102

Buff brick

BRK-103

Black brick

EWS-702

Aluminium cladding and frame

DRS-215

Aluminium cladded metal door

DRS-205

Aluminium cladded metal door finish

DRS-802

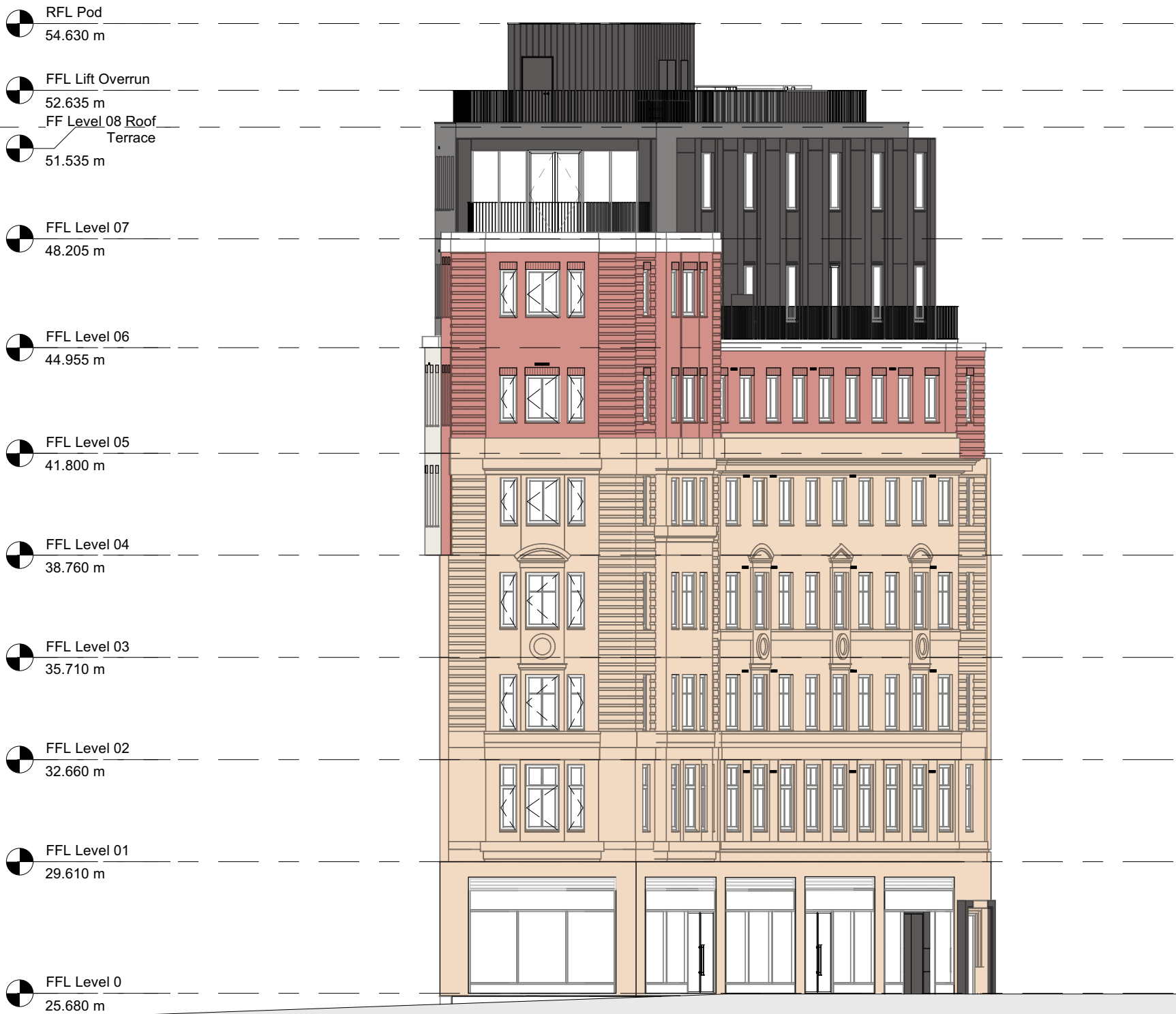
Metal frame aluminium dry riser door

DRS-803

Metal frame aluminium cladded riser door finish

AM-101

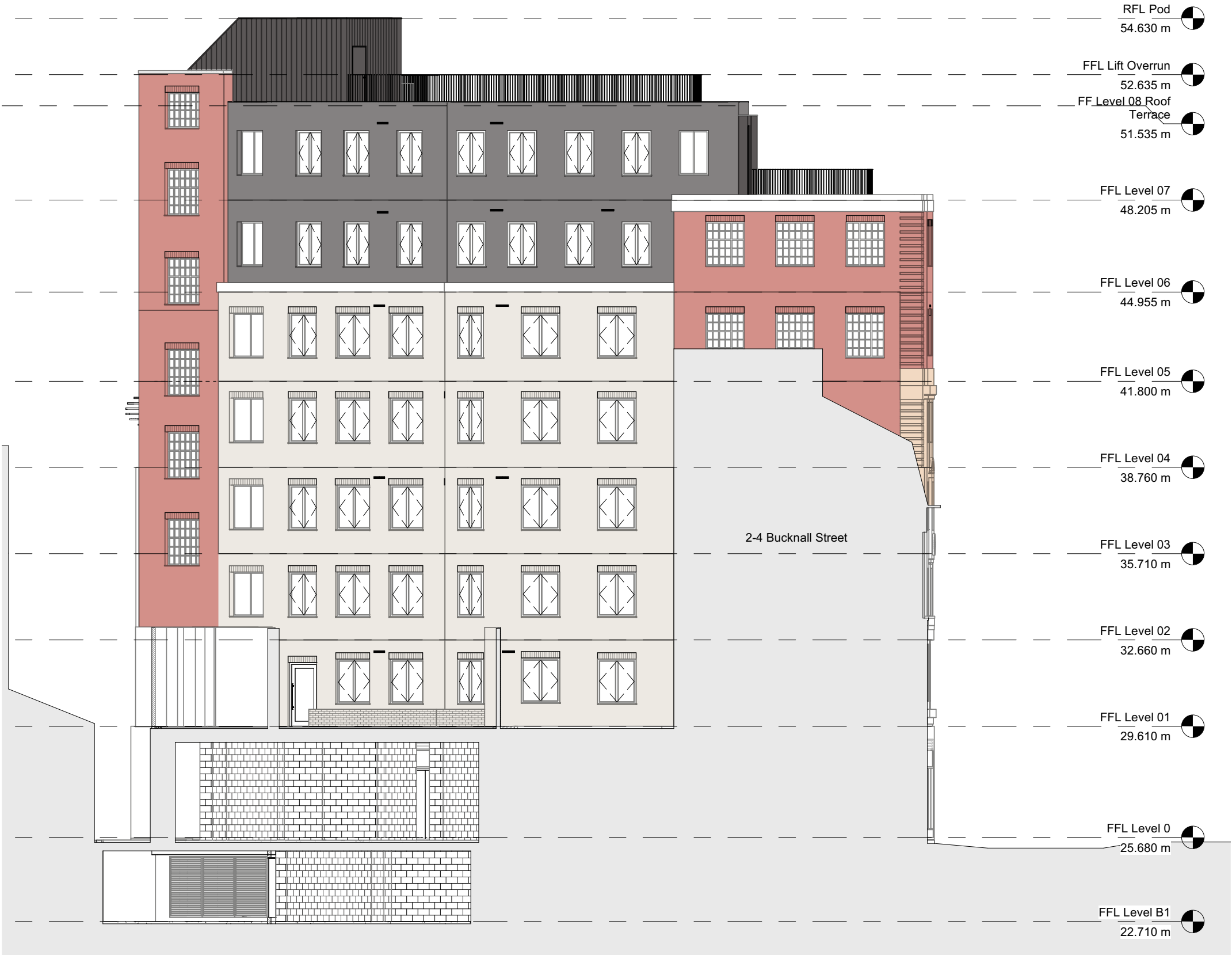
Aluminium capping / coping



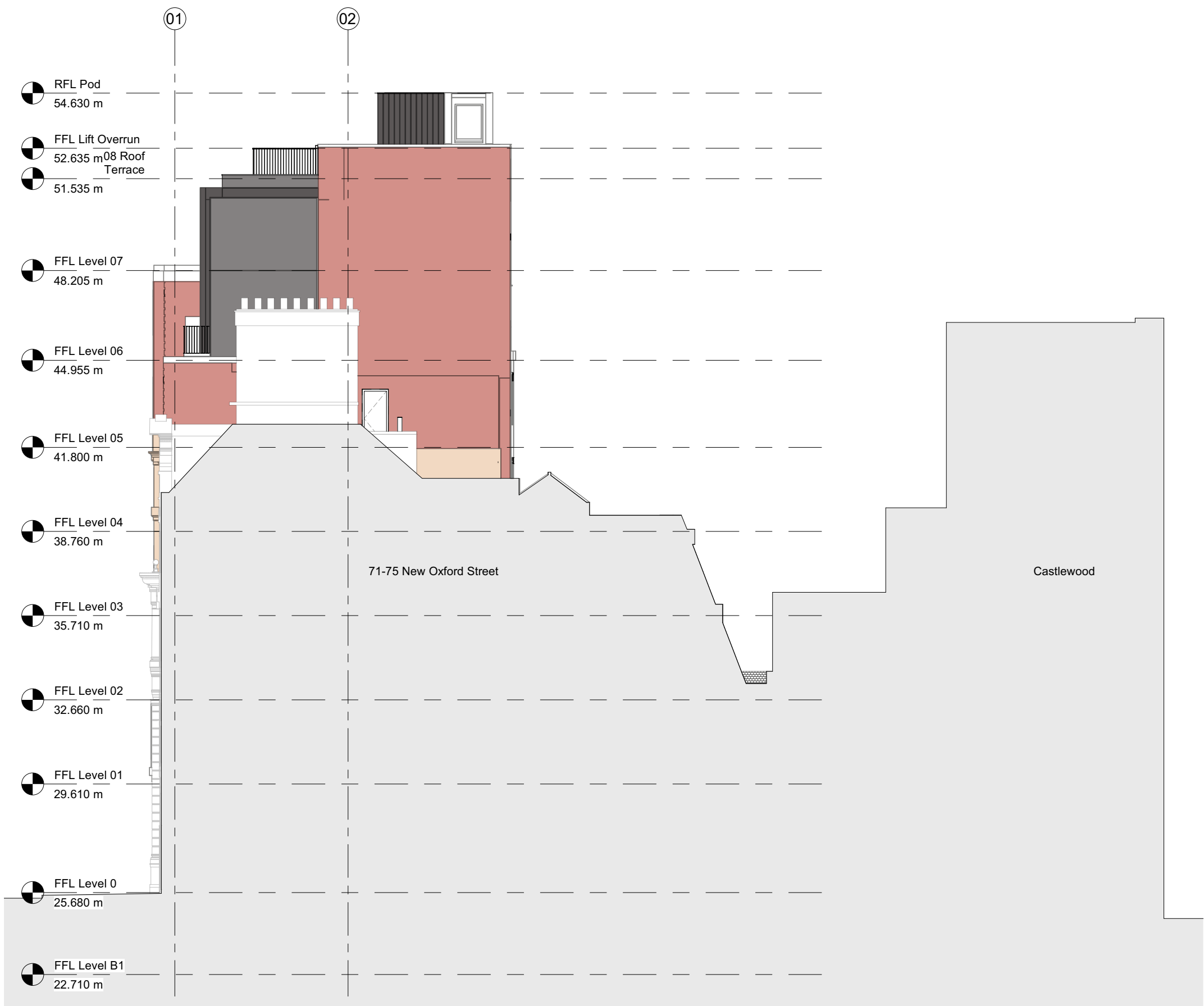
South Elevation

Key

- ALT-301 Retained facade to be cleaned and made good
- BRK-101 Red brick matching retained facade
- BRK-102 Buff brick
- BRK-103 Black brick
- EWS-702 Aluminium cladding and frame
- DRS-205 Aluminium clad metal door finish
- DRS-803 Metal frame aluminium clad riser door finish
- AM-101 Aluminium capping / coping



West Elevation



Apt
235 St John Street
London EC1V 4NG

T. +44 (0)20 7419 3500
E. mail@apt.london
W. www.apt.london