

1 Proposed Plants on Living Roof

Vinca minor 'Alba'

English name: lesser periwinkle
 Vinca minor 'Alba', one of many varieties of Vinca minor, is a fully hardy ground cover plant with small, white flowers and a flowering period from March to July.

Properties

- Leaf colour: green or mixed
- Leaf length: 2 to 4 cm
- Flower colour: white
- Flowering period: March to July
- Plant height: 5 – 15 cm
- Hardiness: fully hardy
- Evergreen: yes
- Position: shade, partial shade, sun
- Habitat: Regular soil, humous

Planting Density

Vinca minor alba (a white periwinkle)
 Covergreen plant mats, size 57x37 cm each
 4 mats / sqm being the equivalent of 24 plants / sqm
 Overall planted roof area is approx 12 sqm

<https://www.covergreen.nl/en/bodembedekker/vinca-minor-alba-en/>



Living Roof Maintenance Plan

Vinca minor planting on the green roof will be cut back hard in Spring (March) to keep it to its allocated space and to ensure it remains bushy and floriferous. Irrigation will need to be adjusted seasonally, particularly in the first year of establishment, to ensure the plant roots do not dry out in hot weather (daily watering in early morning controlled by a computer timer may be necessary if there is a heat wave) and to ensure that it is not waterlogged in winter.

Vinca minor is frost hardy to -15° so it is unlikely to be vulnerable in a sheltered London location, but in prolonged spells of extremely cold weather, it would be advisable to cover with horticultural fleece in the first year of establishment.

Some light weeding will be necessary every couple of months during the growing season (from March onwards) to ensure the removal of any weed seedlings or self-seeded trees deposited by the overhanging trees, birds or wind.

2 Section through Living Roof

1 : 10

Vinca minor alba (a white periwinkle), 24 plants per m2 in 50mm growing medium

Soil substrate, 100mm thick, with integrated drip hose

PermaSEAL 8 Green Roof Drainage Membrane (with integral Geotextile filter fabric), on Root barrier

Primary weatherproofing membrane and upstand lapped under capping

Pebble margin 125mm wide

WBP bonded exterior plywood

Weather treated timber

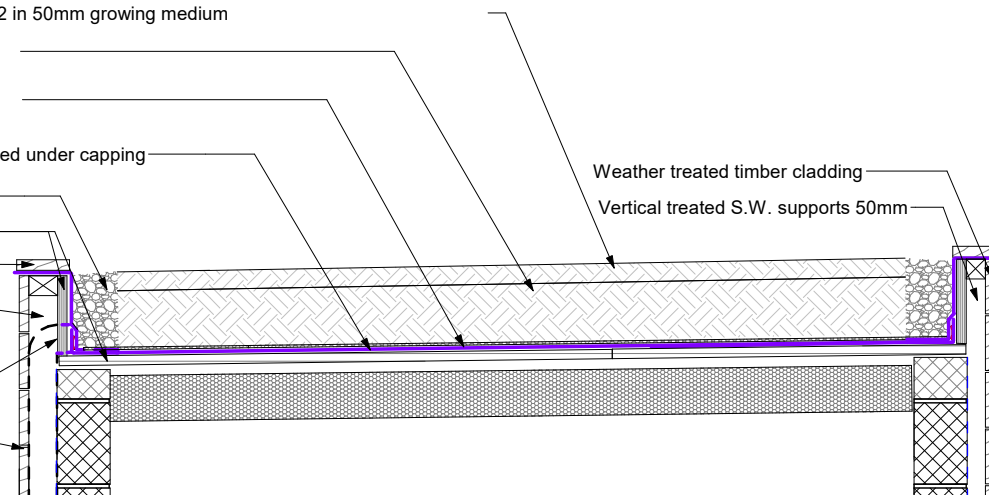
Vertical treated S.W. cladding supports

Rainwater outlet and downpipe (to water butt), concealed within cavity

Weather treated timber cladding on battens

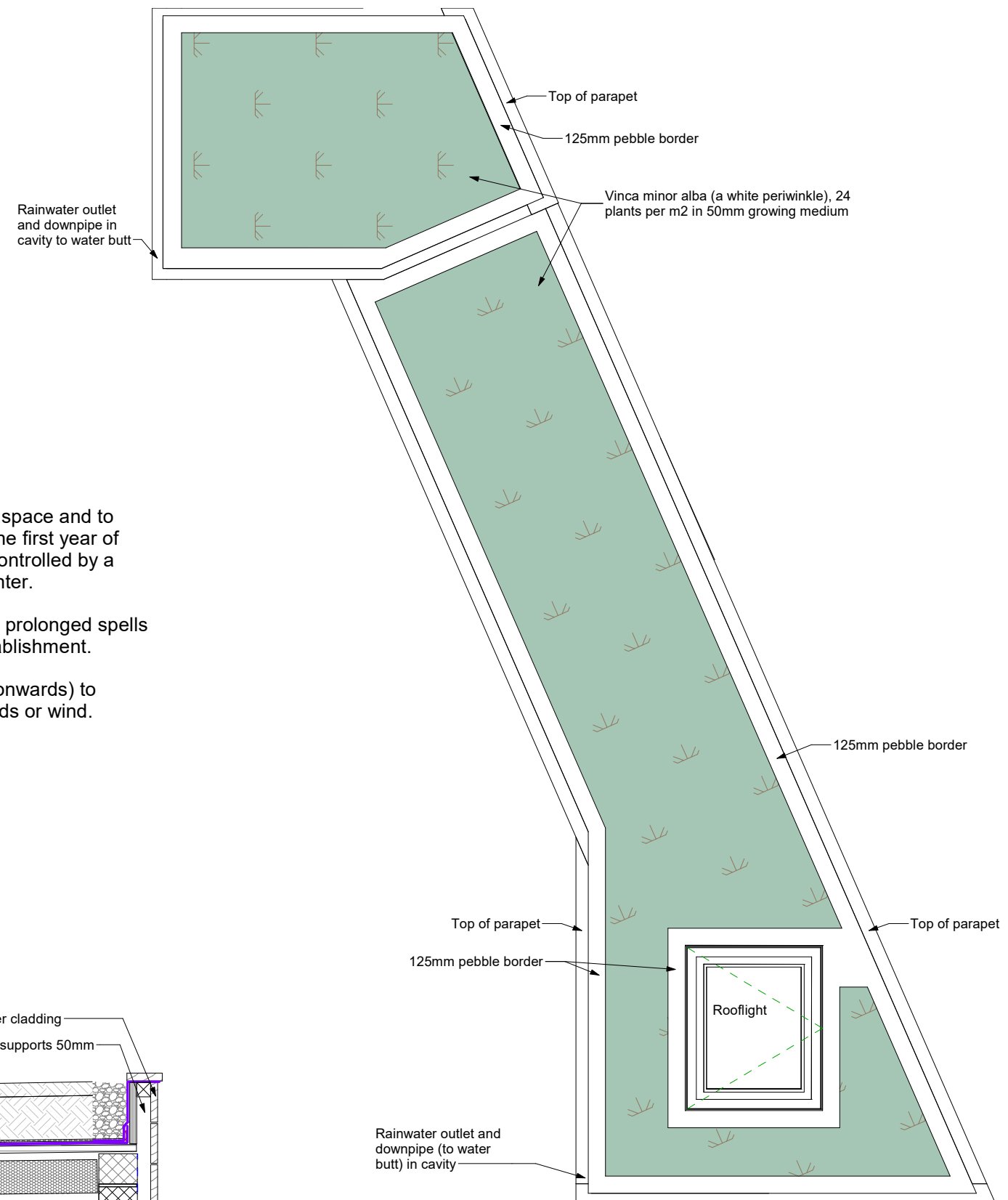
Weather treated timber cladding

Vertical treated S.W. supports 50mm



3 Plan of Living Roof

1 : 20



GENERAL NOTES.
 The Contractor to advise on all details and ensure stability and strength of construction. The contractor to provide setting out and rod drawings for approval prior to construction.
 The contractor to check all dimensions on site and relate to these drawings. The contractor to report any discrepancies to designers prior to construction. All services to local authorities, BCO & Environmental Health requirements and to Service Engineers.
 All structure to Structural Engineer's details and local authority and BCO requirements. All construction and materials to comply with the current Building and Fire Regulations.

Rev	Description	Date
PO	Planning Conditions Information	21/04/08

STATUS
 Planning Condition

CLIENT
 Mr. & Mrs. Burns

PROJECT
 11 Briardale Gardens,
 NW3 7PN

TITLE
 Shed Living Roof

DRAWN BY: FH
 CHECKED BY: AN
 DATE: 02/24/21
 SCALE (@ A1): As indicated
 PROJECT NUMBER: 1901
 PURPOSE OF ISSUE: Planning Condition

DRAWING NUMBER: 1901_FS_P203_PO
 REV:

1901_FS_P203_PO



t: +44 20 3432 1341
 e: studio@fabric-space.com
 www.fabric-space.com

4/8/2021 5:57:28 PM