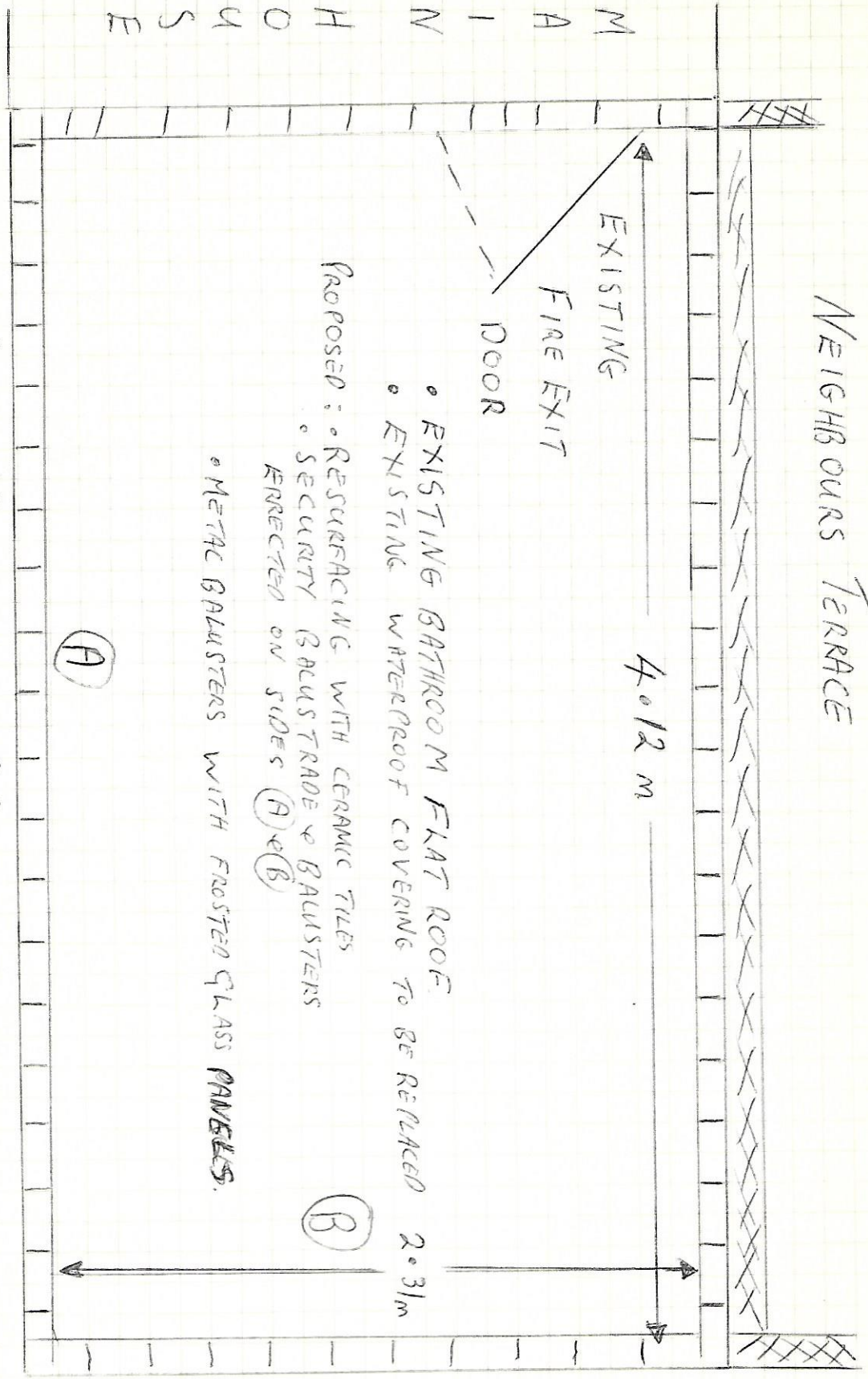


Neighbours Terrace



- PROPOSED:
- RESURFACING WITH CERAMIC TILES
 - EXISTING WATERPROOF COVERING TO BE REPLACED
 - SECURITY BALUSTRADE & BALUSTERS ERRECTED ON SIDES (A) & (B)
 - METAL BALUSTERS WITH FROSTED GLASS PANNELS.

SCALE 1:20

7th APRIL 2021
DRAWING No: 1

TERRACE :: 13 CHARLTON KINGS ROAD.

