

Podium Deck RWP Chamber 150mm/110mm

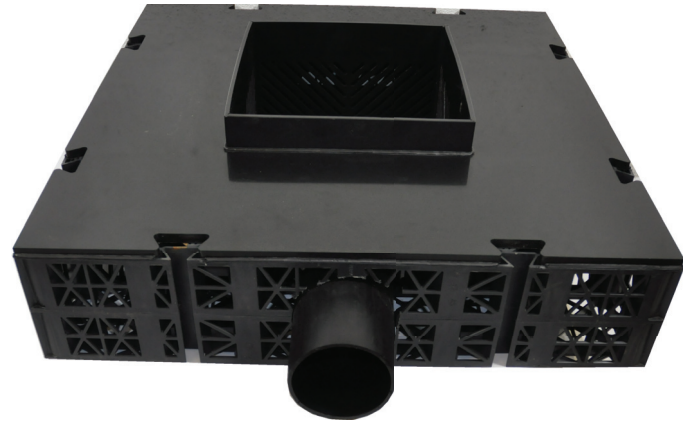


the Foundation for our Future

PVOD01402

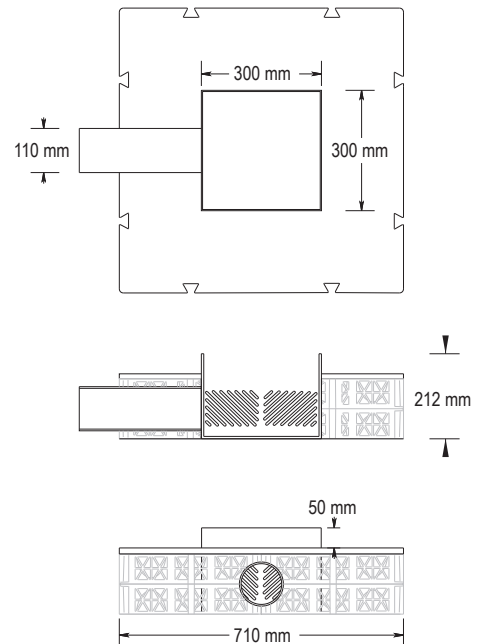
Description

Designed for use in shallow Permavoid® podium deck constructions, the Podium Deck RWP Chamber 150mm/110mm collects rainwater via the 110mm Ø inlet pipe, filters through the perforated walls and is dispersed into the surrounding Permavoid storage system. The podium deck RWP chamber has an integral 50mm deep dump to effectively trap silt, and is compatible with standard 110mm Ø push fit couplings.



Packaging Details

Element	Value	Unit
Packaging unit type	Double wall cardboard	
Packaging unit dimension	822 x 732 x 237 (LxWxD)	mm
Packaging unit weight	12.2	kg
Number of units per pallet	12	nr
Pallet dimensions	1200 x 1200 x 1614 (LxWxD)	mm
Pallet weight	171.4	kg



Specification

Element	Value	Unit
Overall length	800	mm
Overall width	710	mm
Overall depth	212	mm
Sump depth	50	mm
Access upstand	50	mm
Inlet spigot Ø OD	110	mm
Inlet spigot length	90	mm
Maximum flow	11	l/s
Unit weight	12	kg
Material	HDPE / PP	

Easy access for routine maintenance

Effective water dispersal

Integrates with surrounding Permavoid