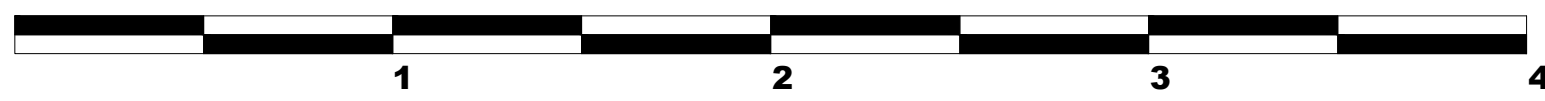
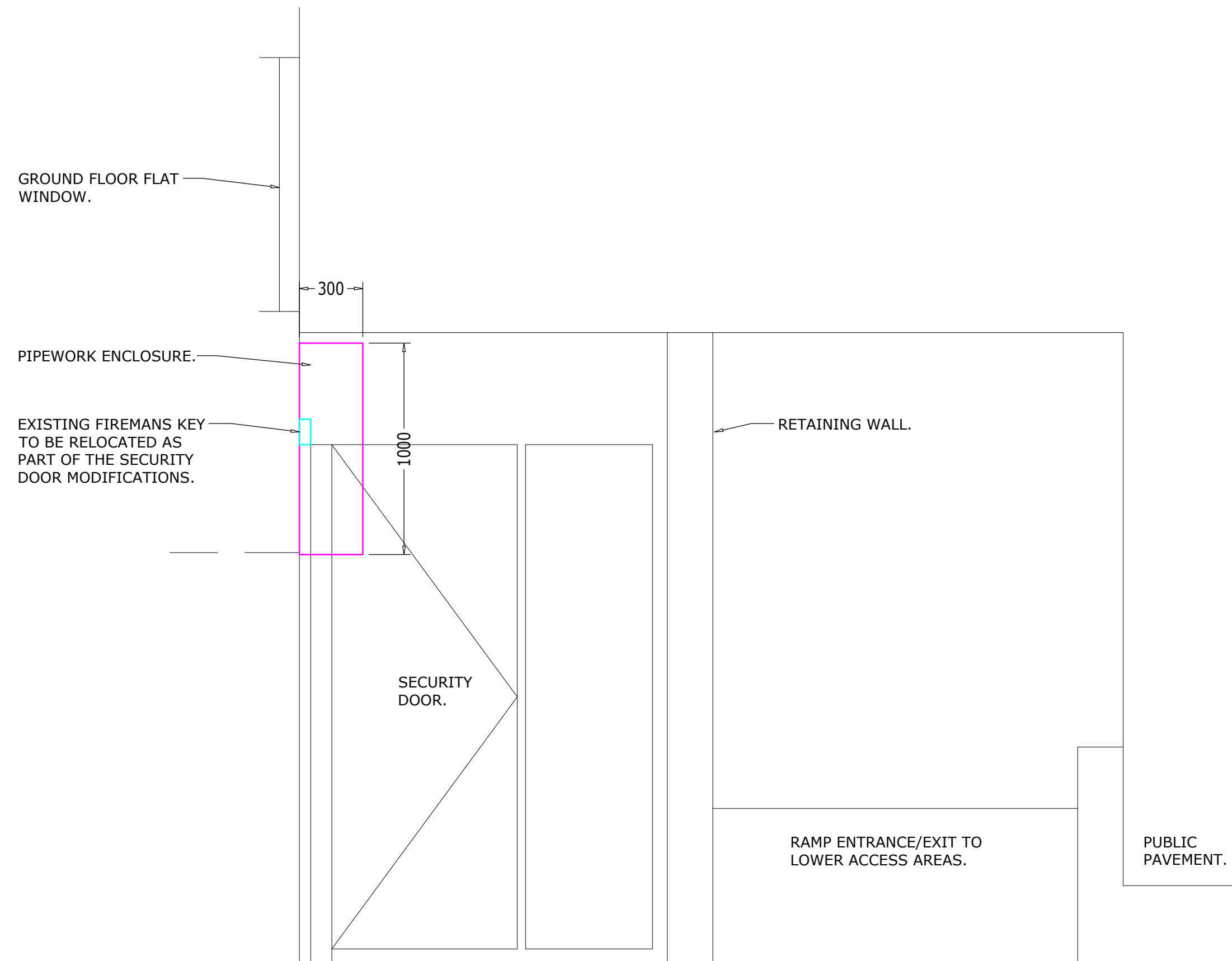
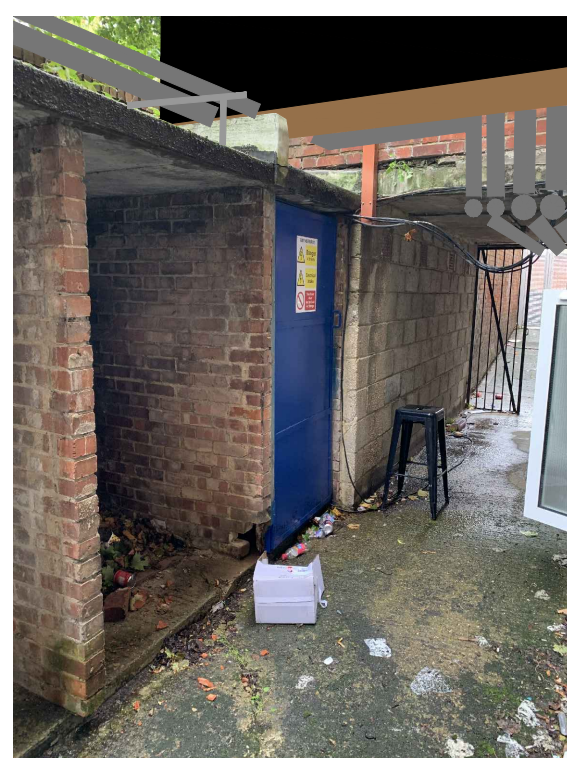
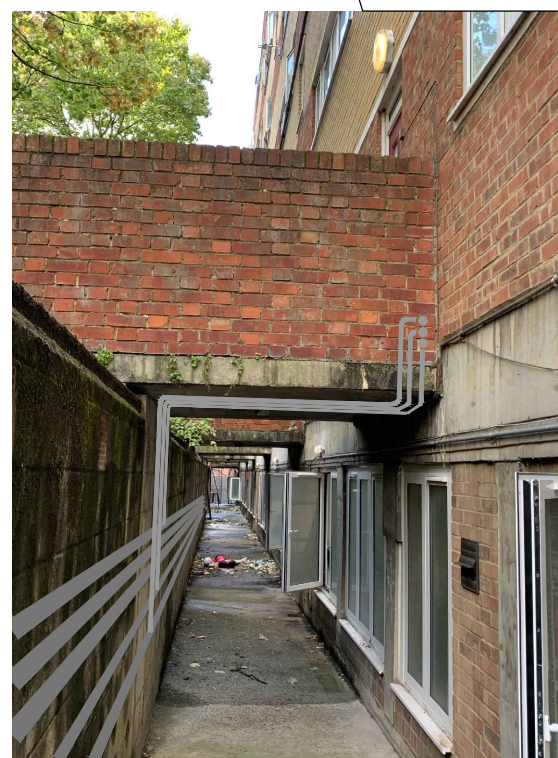
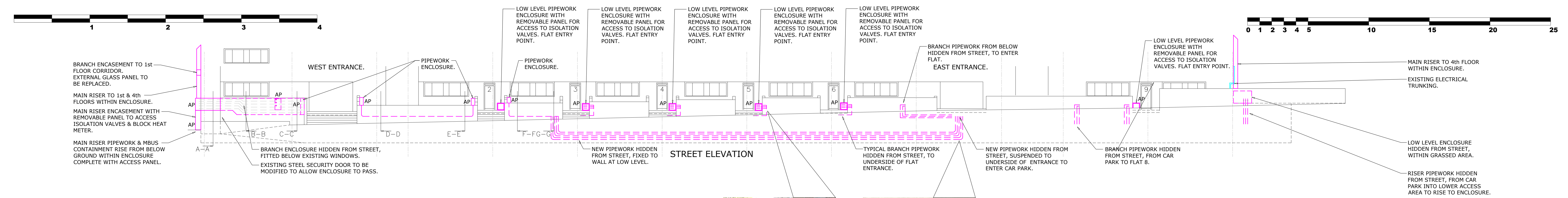
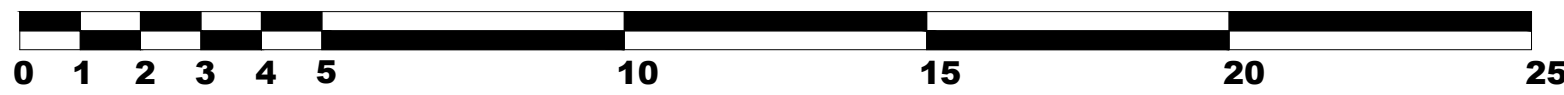


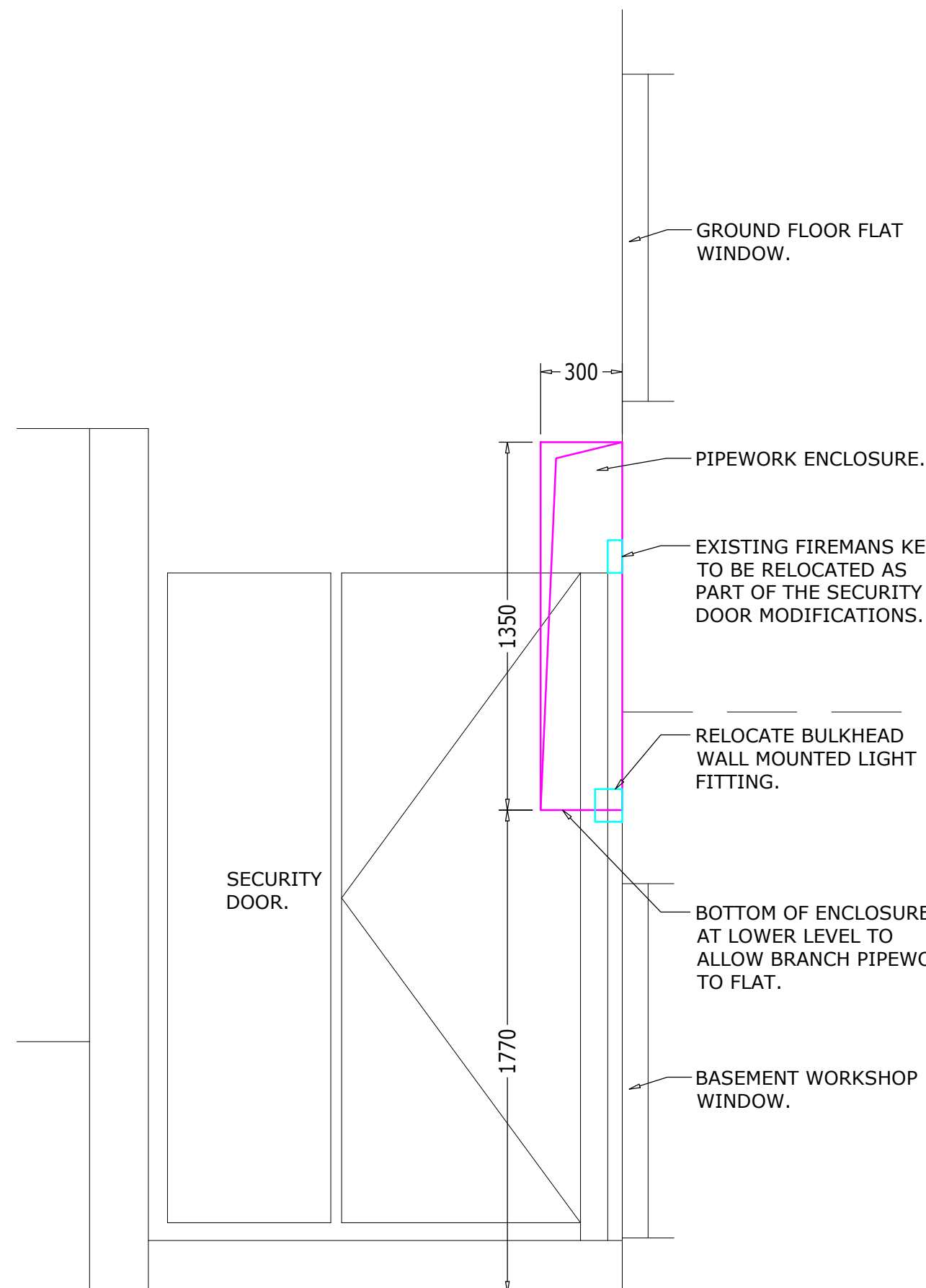
SCALE BAR 1:20



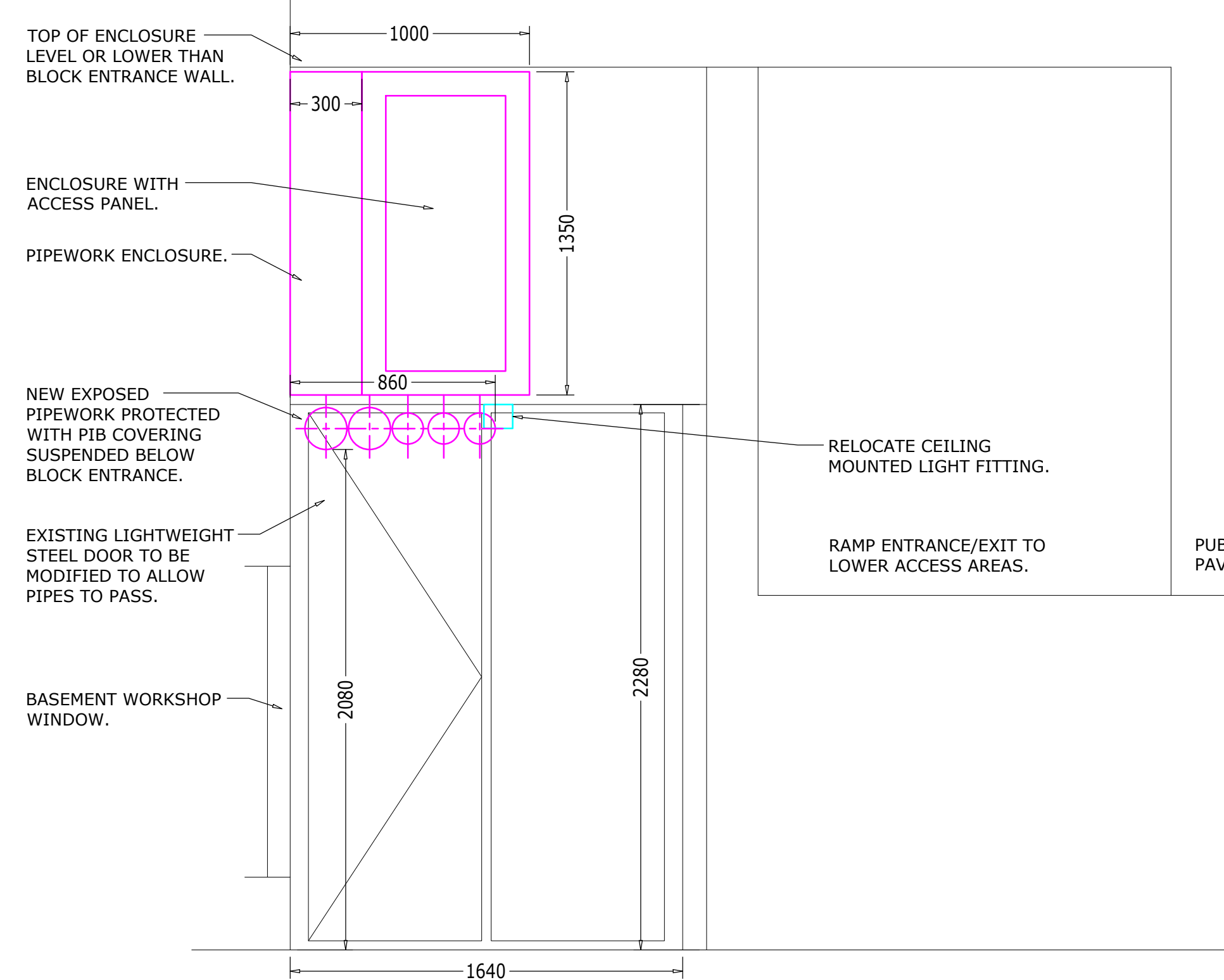
SCALE BAR 1:125



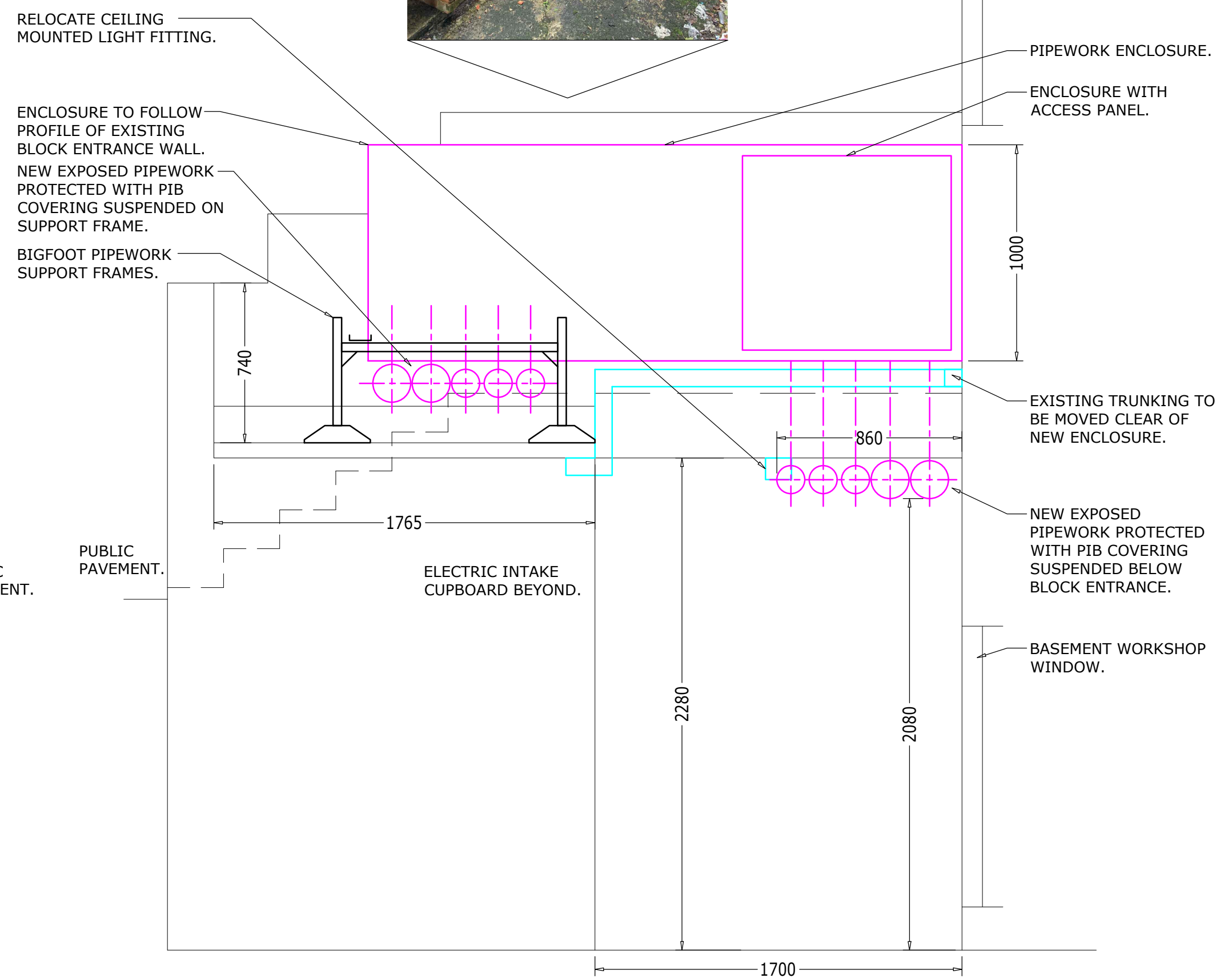
SECTION A-A (Scale 1:20@A0)



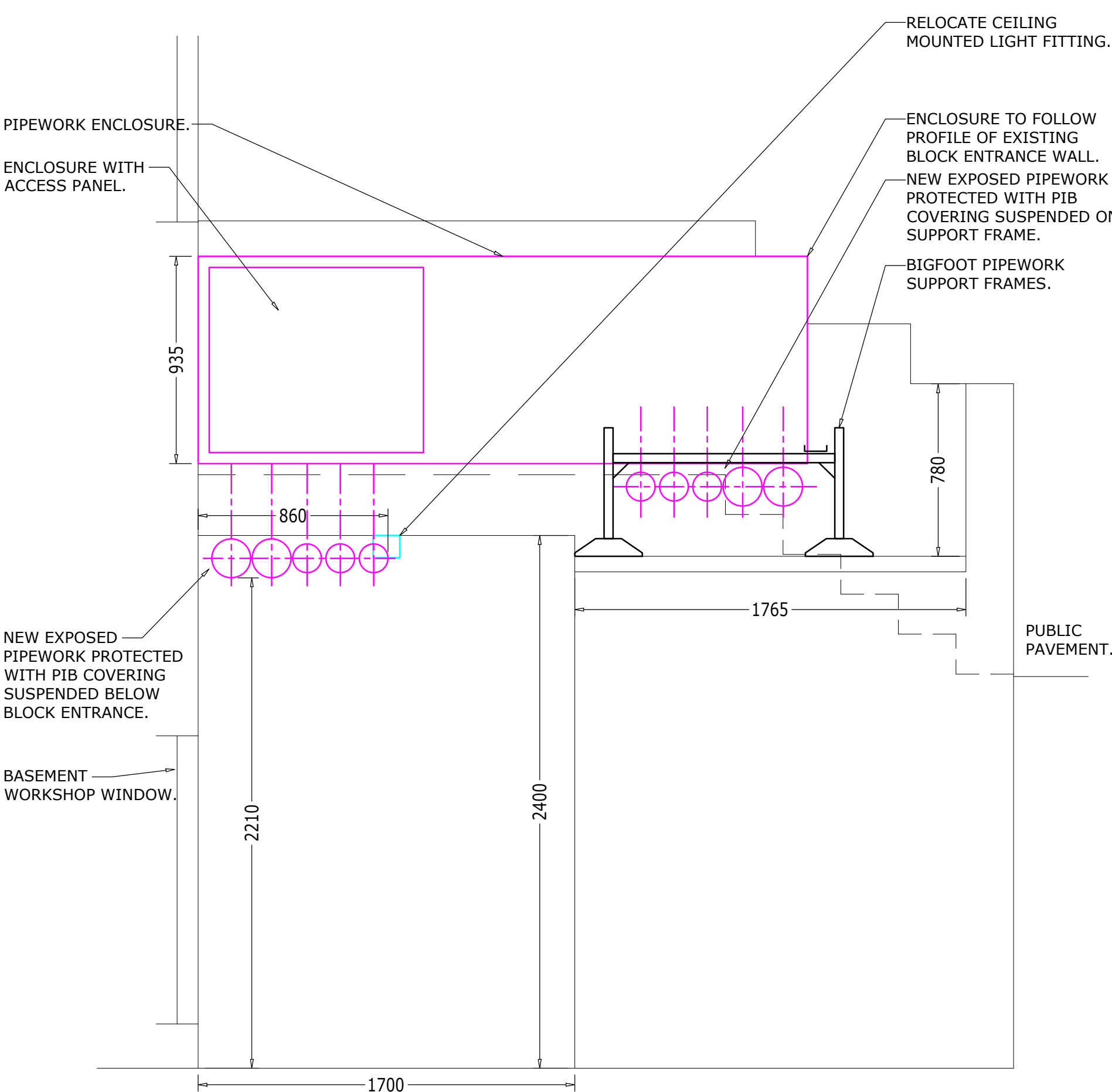
SECTION B-B (Scale 1:20@A0)



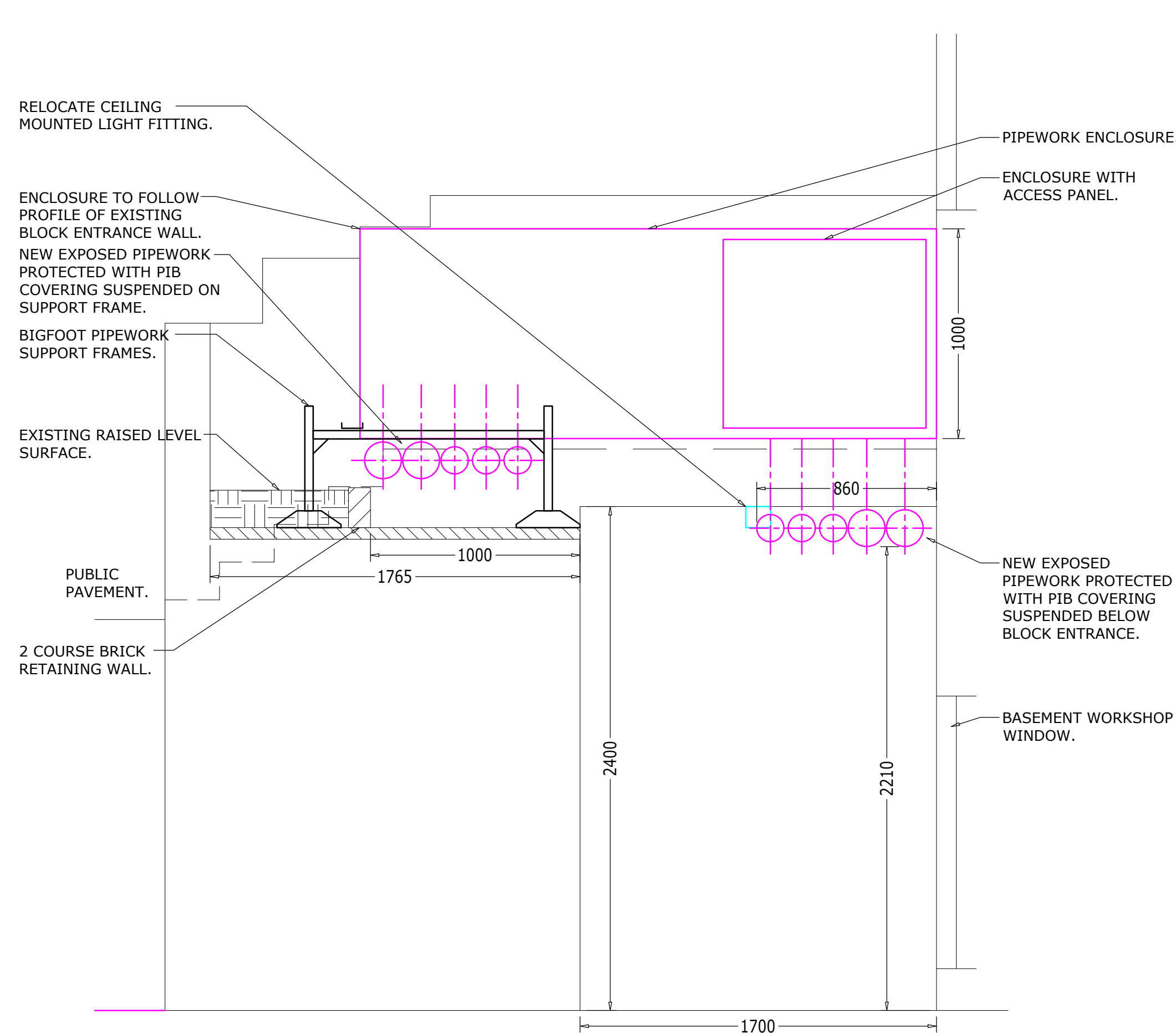
SECTION C-C (Scale 1:20@A0)



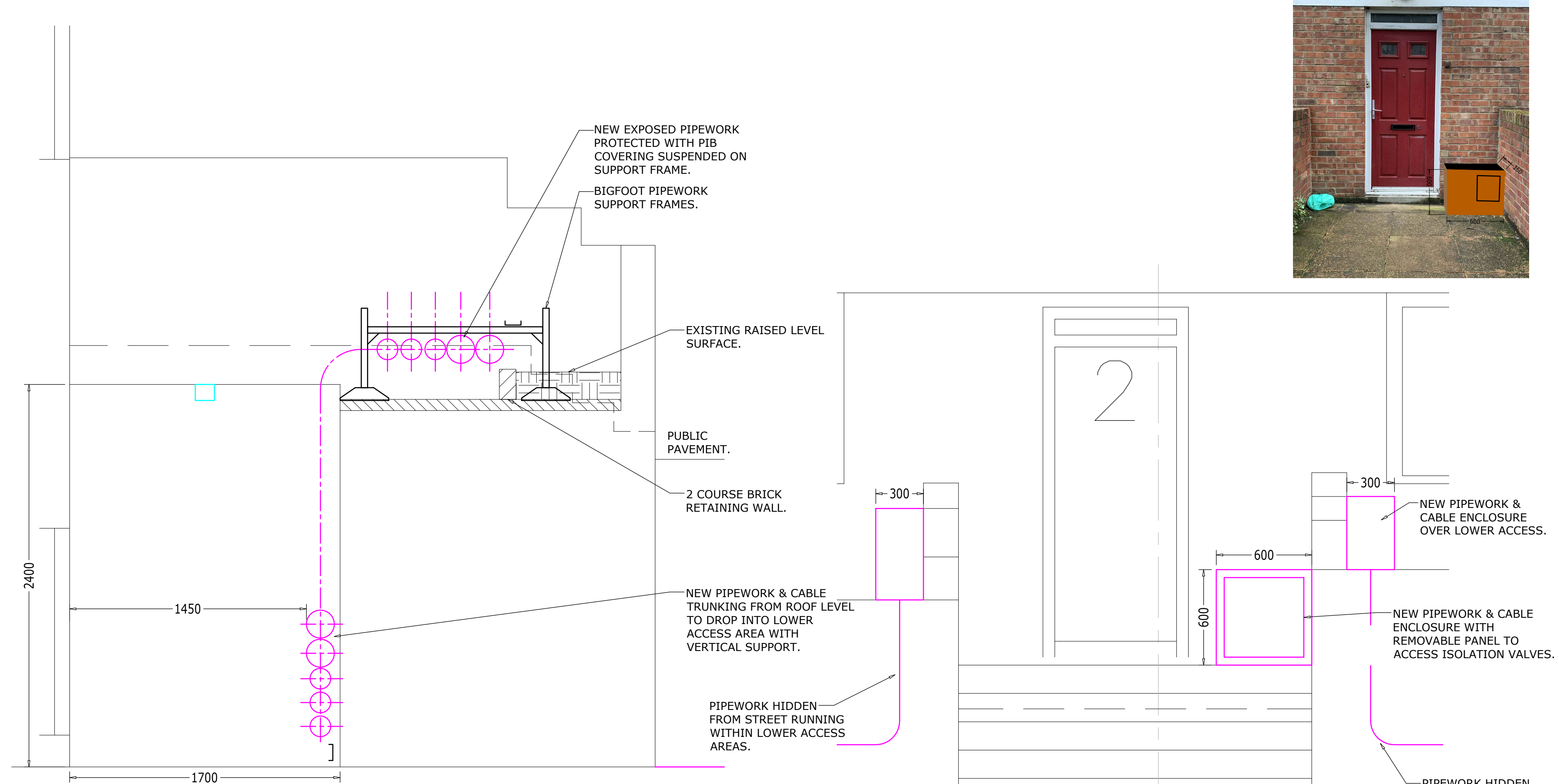
SECTION D-D (Scale 1:20@A0)



SECTION E-E (Scale 1:20@A0)



SECTION F-F (Scale 1:20@A0)



SECTION G-G (Scale 1:20@A0)



ELEVATION FLAT ENTRANCE (Scale 1:20@A0)

Notes:

THIS DRAWING IS TO BE READ IN CONJUNCTION WITH PLANNING APPLICATION EXISTING PLAN & ELEVATION DETAIL DRAWING 11237/M/DET/BUR/19 & 20. NEW PLAN LAYOUT DRAWING 11237/M/DET/BUR/21. FURTHER REFERENCE IS TO BE MADE TO PRE-PLANNING DRAWING 11237/M/DET/BUR/1 AND ASSOCIATED DETAIL DRAWINGS VIEWS 'A' TO 'R' INCLUSIVE.

ENCASEMENT:
2mm THICK PPC ALUMINIUM PIPE BOXING & ANGLE FRAMEWORK.
RAL COLOUR TBA.
VALVE ACCESS HATCHES SQUARE, FACE FIXED 2mm THICK PPC ALUMINIUM COVER PLATE WITH CORNER FIXINGS TO ALLOW FUTURE ACCESS.
ALL SHARP EDGES TO BE REMOVED.

Pipework run in lower access area to be finished with black PIB weathering.

AP- ACCESS PANEL
PIB- POLYISOBUTYLENE WATERPROOF RUBBER COVERING. COLOUR BLACK.

ISSUED FOR APPROVAL

Status A ☐

(Prepared - for further comments)

Status B ☐

(Prepared incorporating comments)

Status C ☐

(Rejected)

Signed

Date

C 08.02.21 First application issue. RDA

Rev Date Description Drawn

Status: PLANNING APPLICATION

INVICTA
Building Services Ltd

Weald Court, 101-103 Tonbridge Road,
Hildenborough,
Kent TN11 9HL
Telephone: 01732 833552
Facsimile: 01732 834768

CLIENT
LONDON BOROUGH OF
CAMDEN

PROJECT
ST SILAS ESTATE HEATING
SYSTEM INSTALLATION
CONTRACT. LONDON NW5

TITLE
BURMARSH BLOCK
PLANNING APPLICATION NEW
ELEVATION AND DETAILS
DRAWING

Drawn: RDA Date: 05.02.21 Scale: 1:125@A0

Drawing No. i1237/M/DET/BUR/22 Rev. C