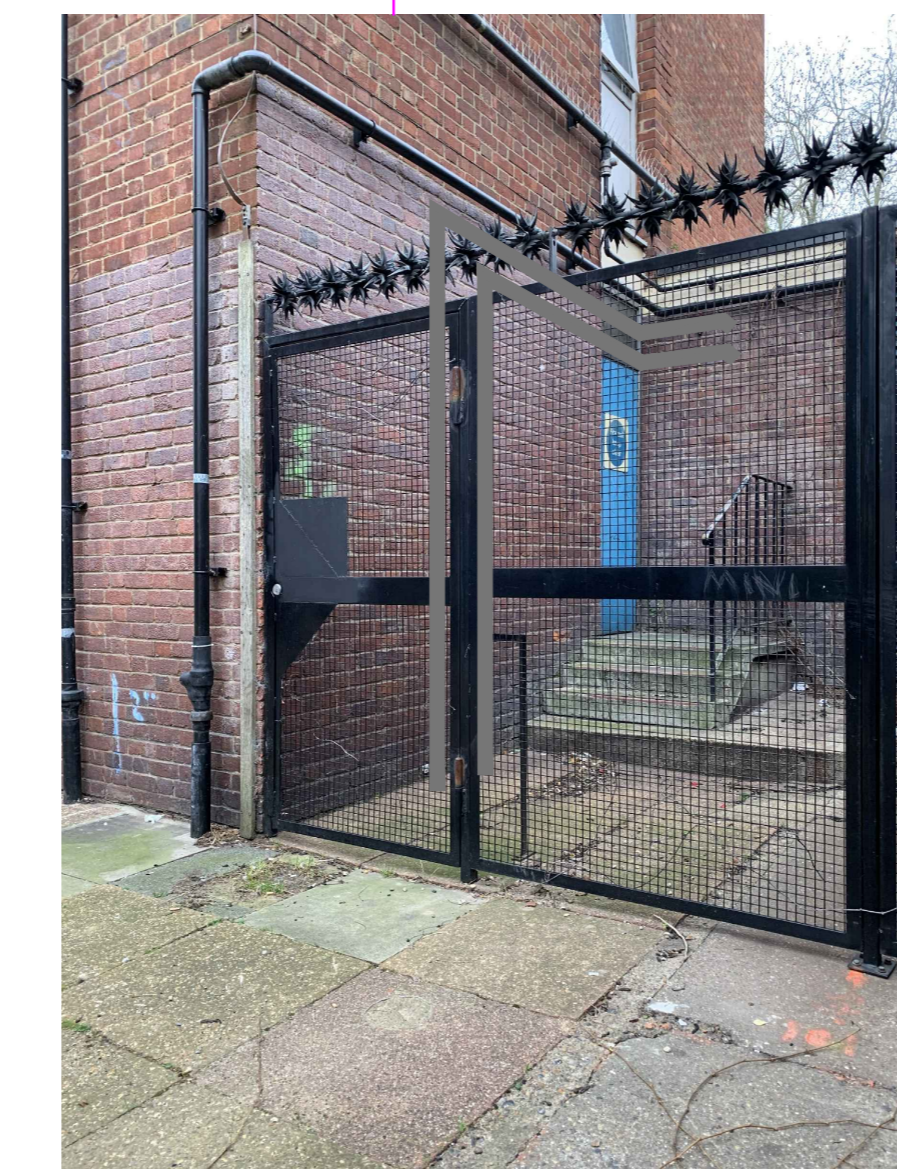
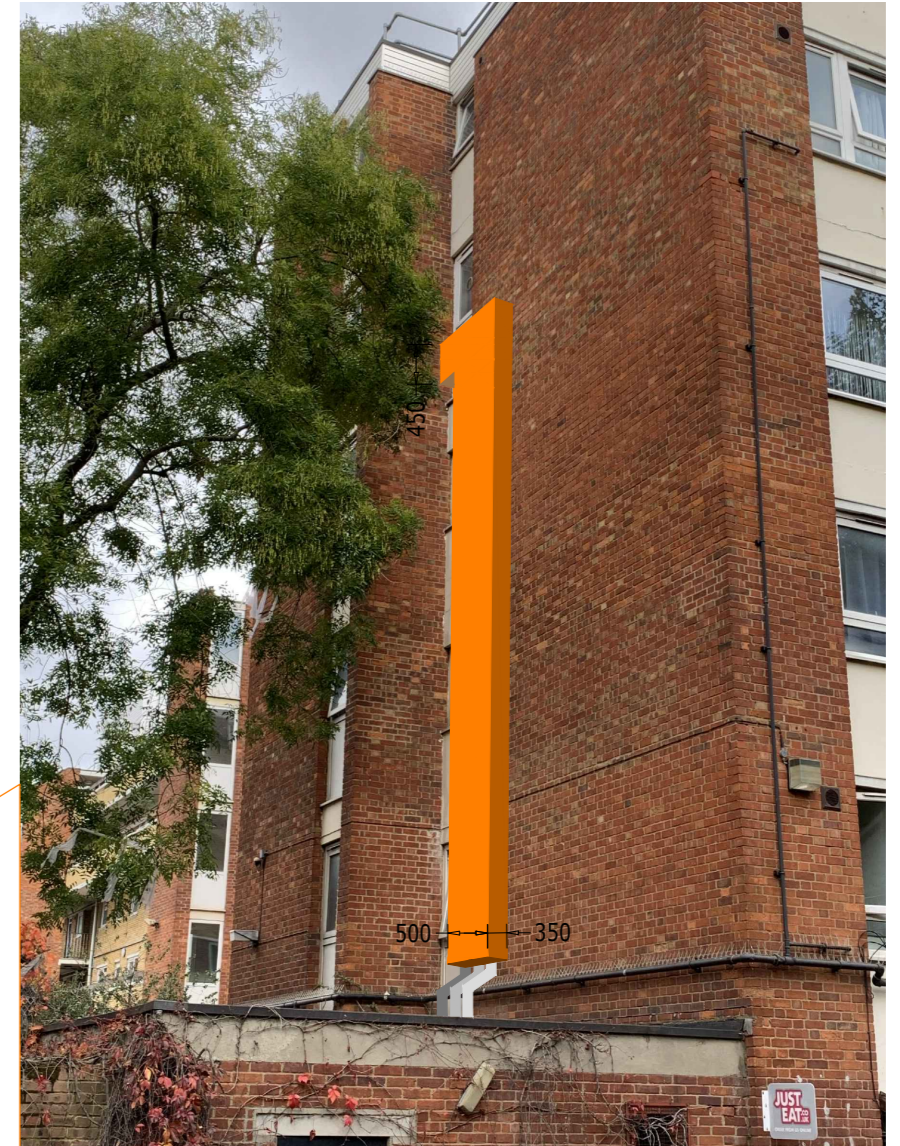
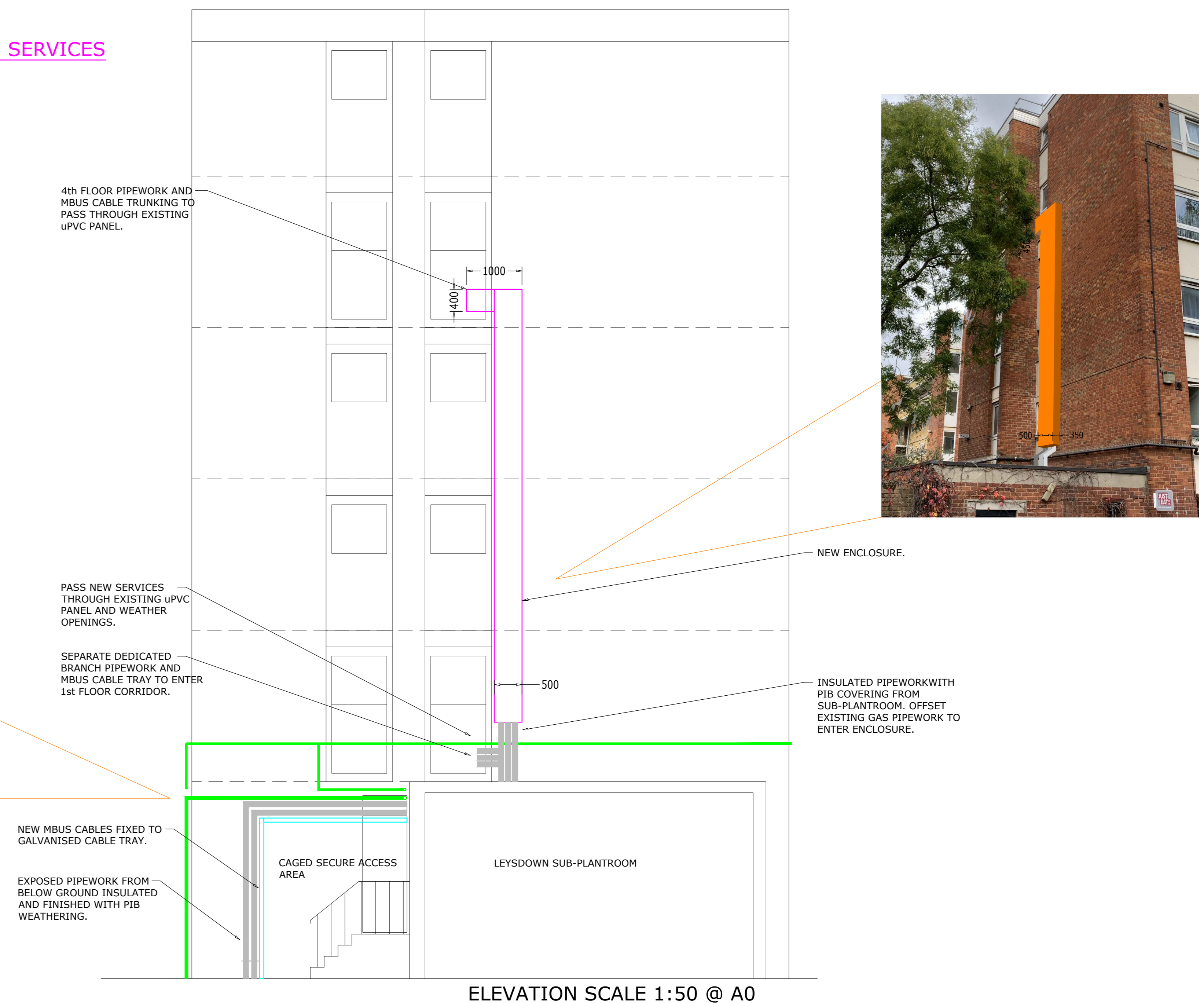


EXISTING BUILDING SERVICES



NEW BUILDING SERVICES



Copyright for this drawing remains the property of Invicta Building Services Ltd and copies can only be made with prior permission.

Notes:

ENCASUREMENT:
2mm THICK PPC ALUMINIUM PIPE BOXING & ANGLE FRAMEWORK.
RAL COLOUR T5A.
VALVE ACCESS HATCHES SQUARE, FACE FIXED 2mm THICK PPC ALUMINIUM COVER PLATE WITH CORNER FIXINGS TO ALLOW FUTURE ACCESS. ALL SHARP EDGES TO BE REMOVED.

FURTHER REFERENCE IS TO BE MADE TO PRE-PLANNING DRAWING I1237/M/DET/LEY/1 AND ASSOCIATED DETAIL DRAWINGS VIEWS 'A' & 'B'.

AP- ACCESS PANEL
FV- FLUSHING VALVE
PIB- POLYISOBUTYLENE WATERPROOF RUBBER
COVERING COLOUR BLACK

ISSUED FOR APPROVAL

Status A
(Issued for further comment)

Status B
(Issued incorporating comments)

Status C
(Rejected)

Signed

Date

C	25.03.21	First planning application issue.	RDA
Rev	Date	Description	Drawn
Status: PLANNING APPLICATION			

INVICTA
Building Services Ltd

Weald Court, 101-103 Tonbridge Road,
Hildenborough,
Kent TN11 9HL
Telephone: 01732 833552
Facsimile: 01732 834768

CLIENT
LONDON BOROUGH OF
CAMDEN

PROJECT
ST SILAS ESTATE HEATING
SYSTEM INSTALLATION
CONTRACT. LONDON NW5

TITLE
LEYSDOWN BLOCK.
PLANNING APPLICATION.
EXISTING & NEW PLAN AND
ELEVATION.

Drawn: RDA	Date: 19.03.21	Scale: 1:75@A0
Drawing No. i1237/M/DET/LEY/4	Rev. C	