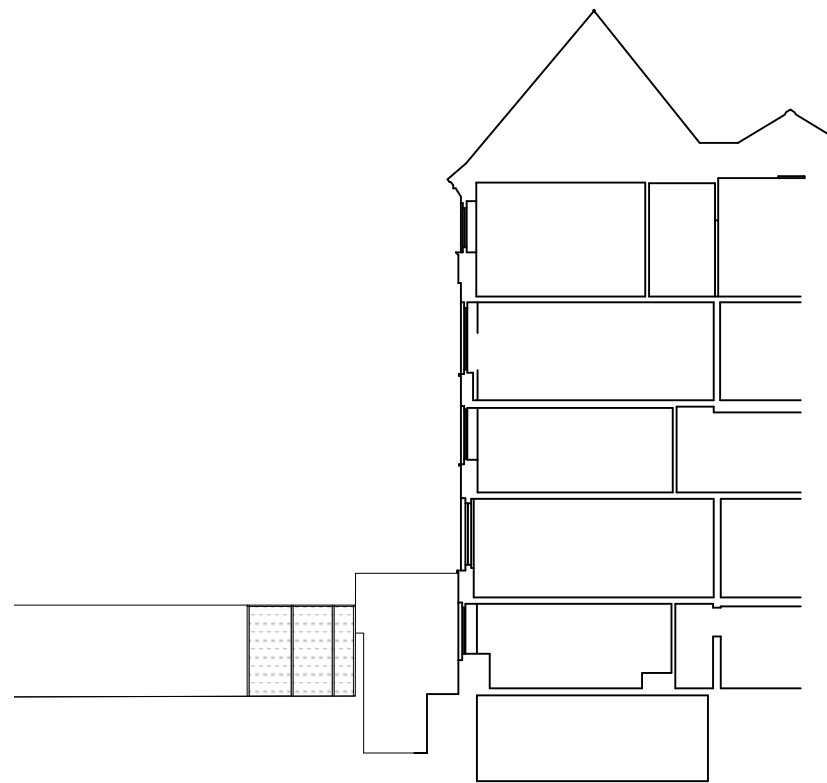




Site boundary

Site boundary

1 Site Section H-h
Scale: 1:200



2 Site Section G-g
Scale: 1:200

Key

Rev	Date	Drawn	Comment

Client
London Borough of Camden

Job
1031 Carlton Rhyll
Potential Merger

PLANNING

Drawing Title
Site Sections H-h & G-g

Date of First Issue	Issued	Checked
24/03/2021	CG	CG

Drawn	Scale	
GW	1:100 @ A1	1:200 @ A3

Drawing No.	Revision
5003	A

Curl la Tourelle Head Architecture
Unit 8, 16-24 Underwood Street, London N1 7JQ
+44 (0)20 7267 0055
www.clth.co.uk
© Curl la Tourelle Head Architecture

