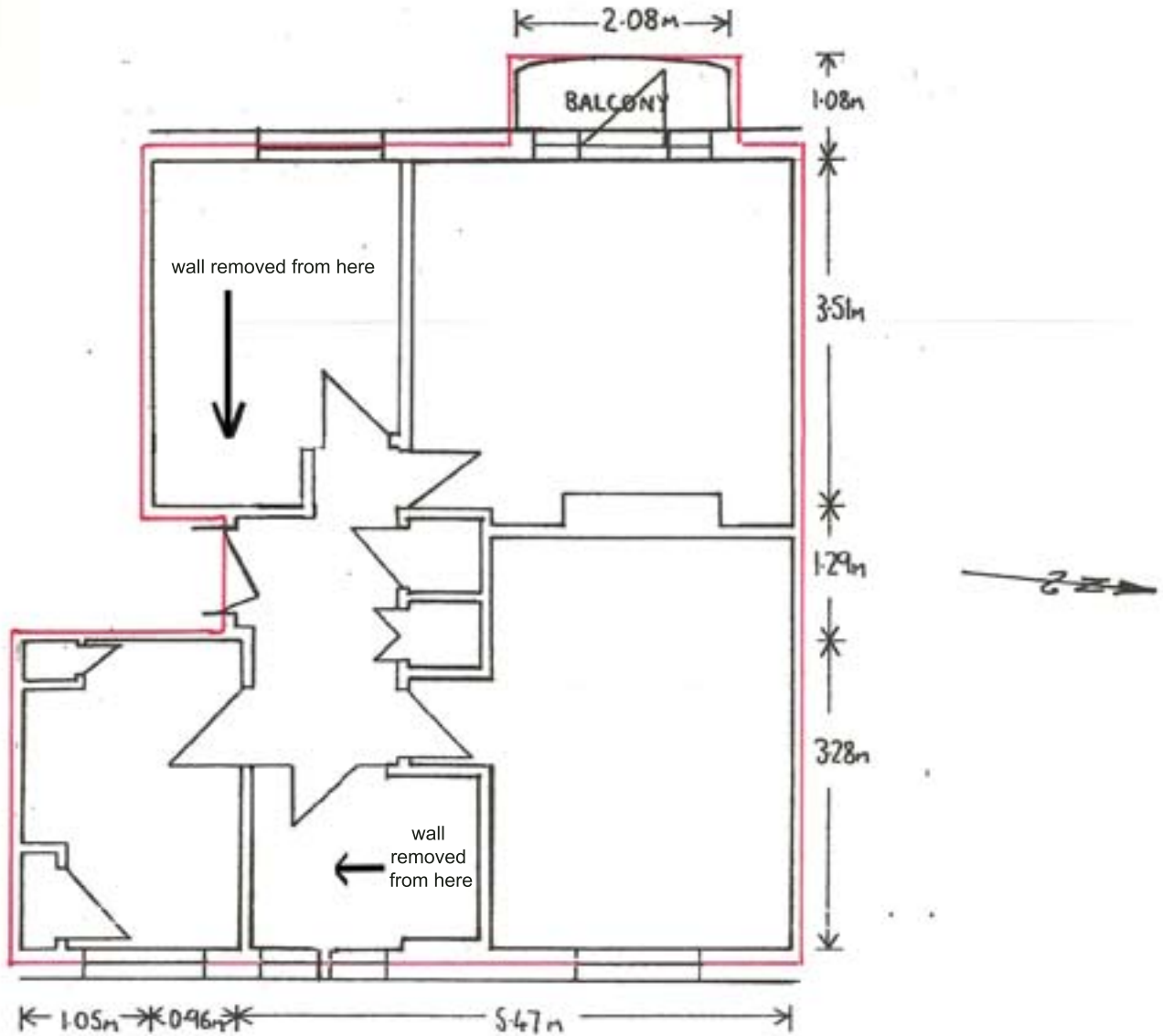


# 15, Dobson Close, N.W.6.

## Second Floor



Not to scale

The ordnance survey extract defines the block known as 11-16 DOBSON CLOSE. Outlined in heavy black. The area delineated in red there on shows the approximate position of the demise within the block. The extent of No. 15, DOBSON CLOSE. To be ascertained from the large plan(s).

The large plan identifies by red outline at floor level, the Demised premises.