



Existing 41 Bedford Square entrance steps



Existing 41 Bedford Square entrance steps



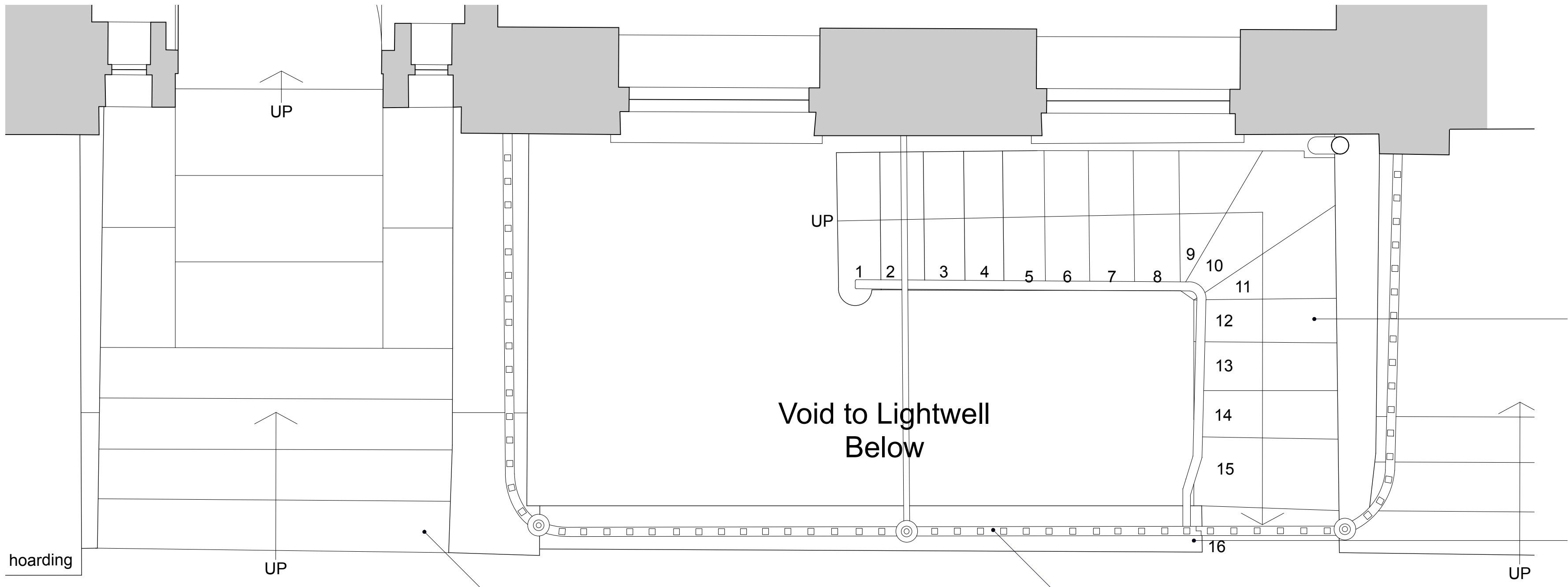
Existing 41 Bedford Sq below entrance



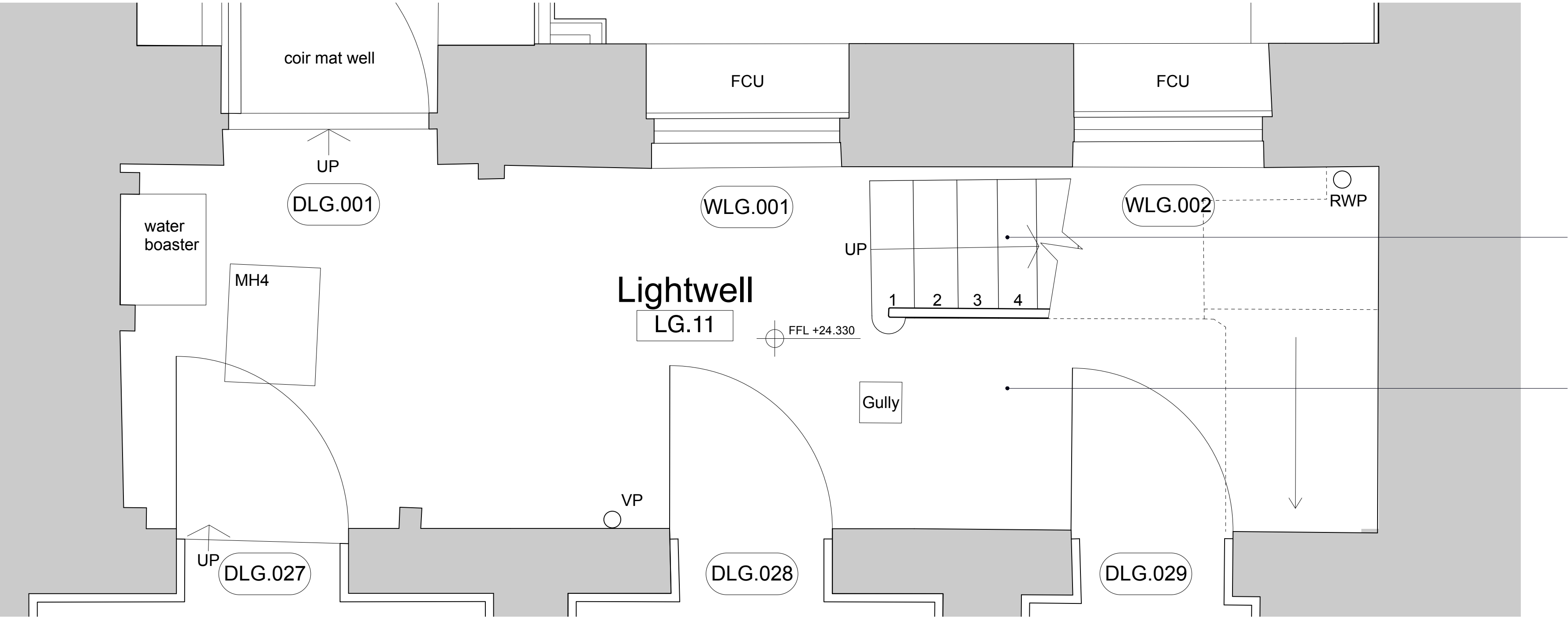
Existing steps and vaults



Existing lightwell steps and Yorkstone paving



Existing ground floor plan



Existing lower ground floor plan

Dilapidated lightwell stone steps - lower flight overlaid with mid-20th century steel chequer plates

Existing dilapidated concrete-covered railing plinth

Existing historic railings in black painted cast-iron

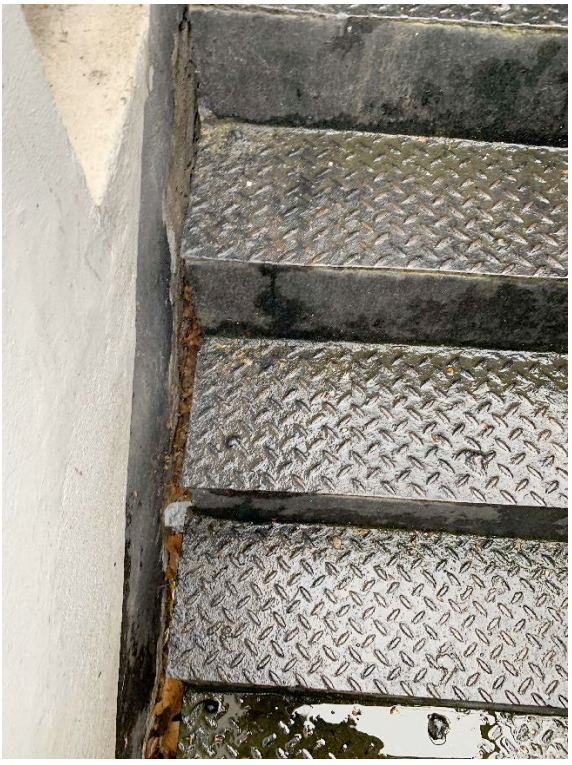
Existing Yorkstone steps in a straight-run arrangement with closed treads and raised plinth

Lower flight of dilapidated basement lightwell stone steps overlaid with mid-20th century steel chequer plates

Original riven Yorkstone paving slabs, multi-sized random pattern



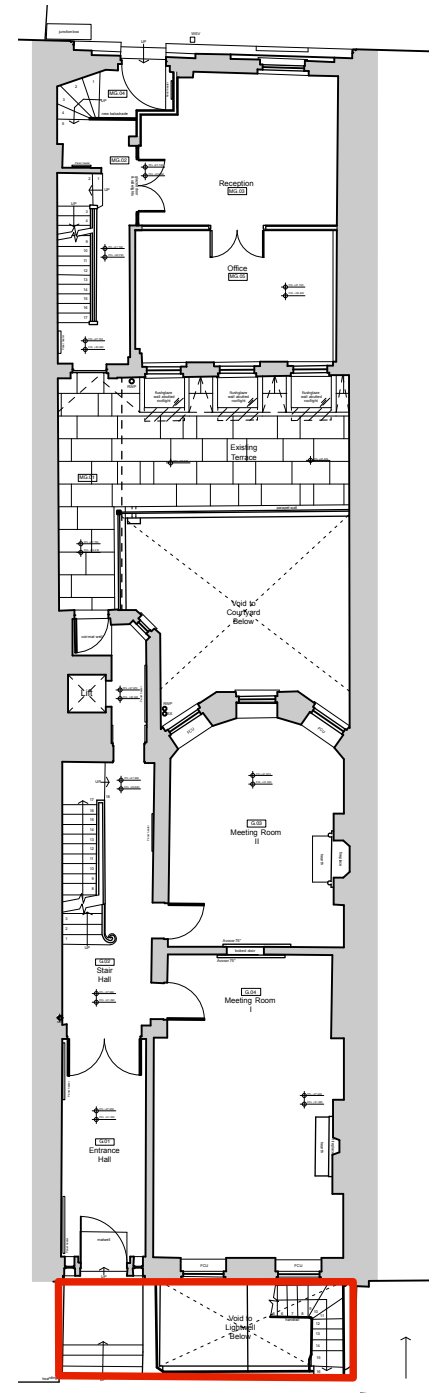
Existing 41 Bedford Square lightwell



Existing debris against front elevation



Existing steps and vaults



Ground floor key plan

P1 ISSUED FOR PLANNING / LBC 19 Mar 2021

REVISION DESCRIPTION DATE

DRAWING Existing front lightwell plans SCALE 1:40 B A3 1:20 B A1

DATE May 2019

PROJECT 41, Bedford Square LONDON DRAWN CM

WC1B 3HX CADFILE 223_PL_078

CLIENT EenEnVeertig Limited

DRAWING No 223_PL_078 Rev P1

STATUS PLANNING / LBC

smok

Unit 3, Canonbury Yard, London N1 7BJ
020 3393 3022 office@smok.co.uk