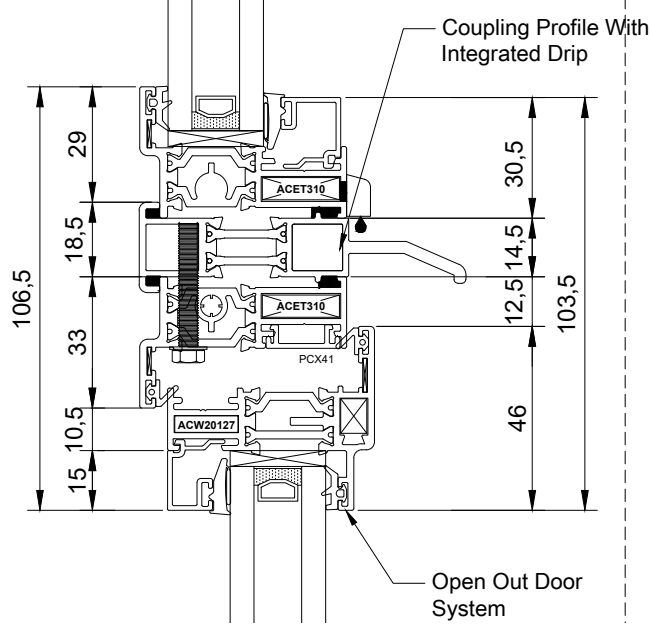
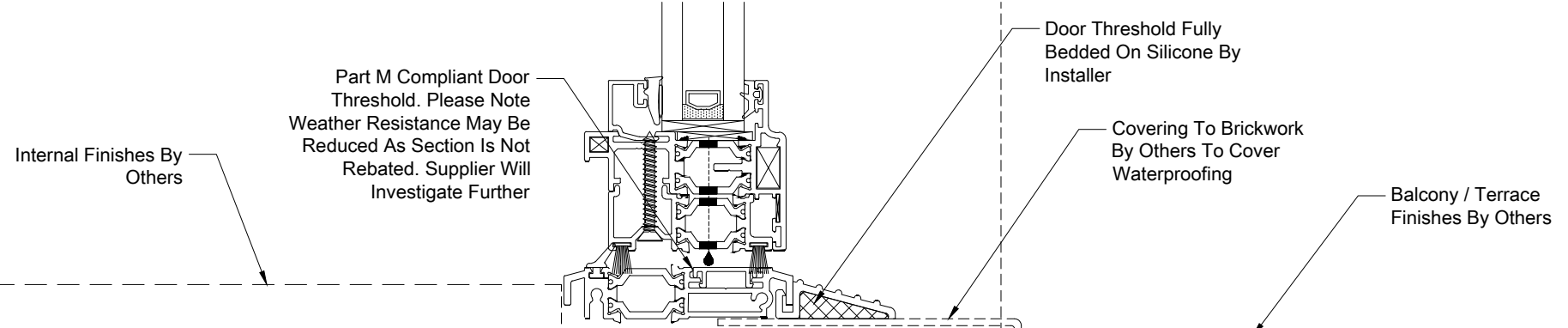


DETAIL 1



DETAIL 2



DETAIL 3

REV	DATE	REVISION
F1	25-03-21	First issue

FOR APPROVAL

ARCHITECT: SADA Architecture

CLIENT:

CONTRACTOR:

CONTRACT: 17 - HAMPSHIRE STREET

DRG. TITLE:
Typical Upper Floor Window / Door
Vertical Sectional Details

ALUMINIUM ECO SOLUTIONS
Unit 2B
OAKHAM ENTERPRISE PARK
OAKHAM
RUTLAND
LE15 7TU

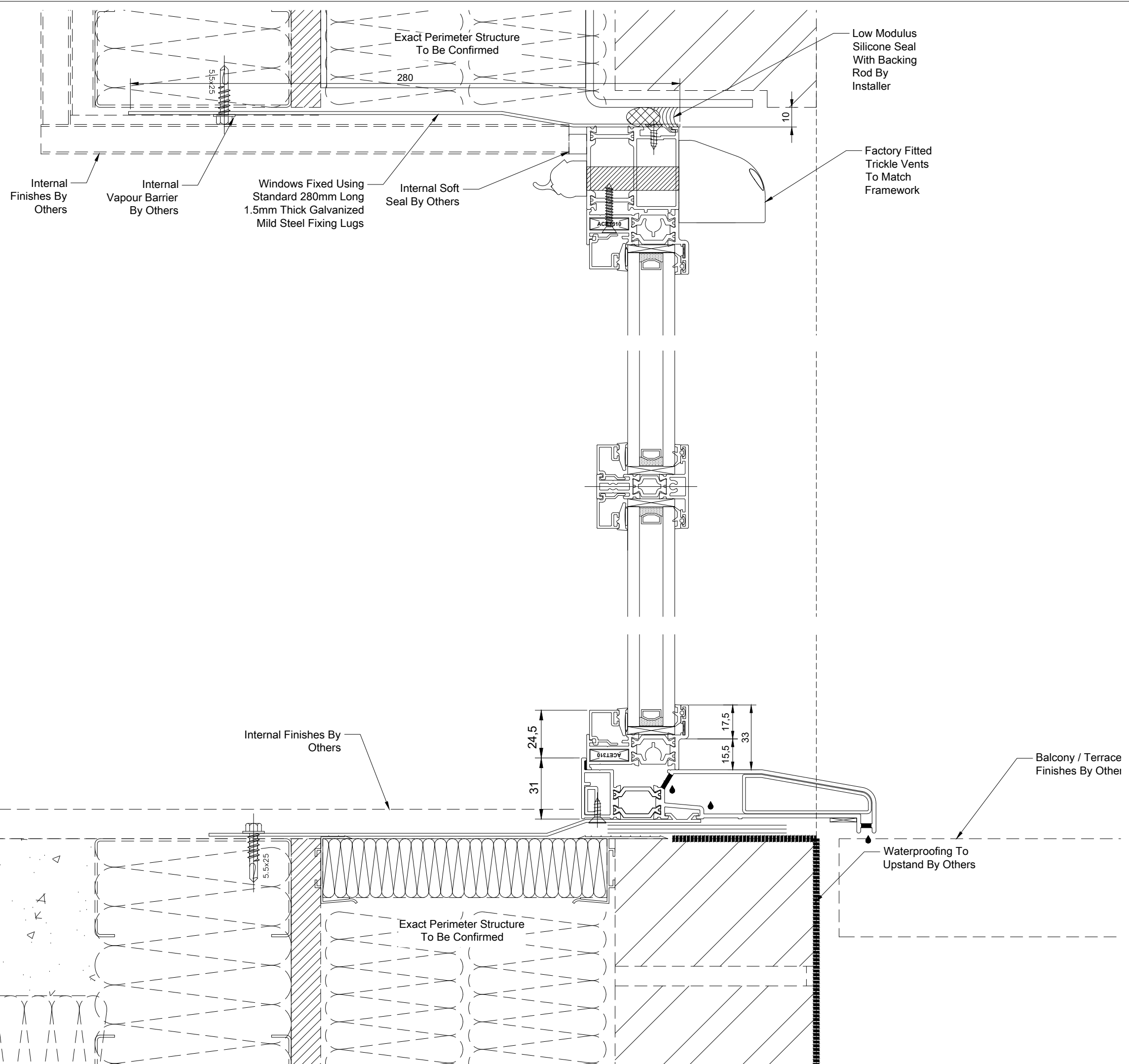
DO NOT SCALE IF IN DOUBT ASK

DRAWN: AES

SCALE: NTS@A3 CHECKED:

DRG. No.: ISSUE/REV:

DT-001 0



DETAIL 1

DETAIL 2

DETAIL 3

REV	DATE	REVISION
F1	25-03-21	First issue

FOR APPROVAL

ARCHITECT: SADA Architecture

CLIENT:

CONTRACTOR:

CONTRACT: 17 - HAMPSHIRE STREET

DRG. TITLE:
Typical Upper Floor Window / Door
Vertical Sectional Details

ALUMINIUM ECO SOLUTIONS
Unit 2B
OAKHAM ENTERPRISE PARK
OAKHAM
RUTLAND
LE15 7TU

DO NOT SCALE IF IN DOUBT ASK

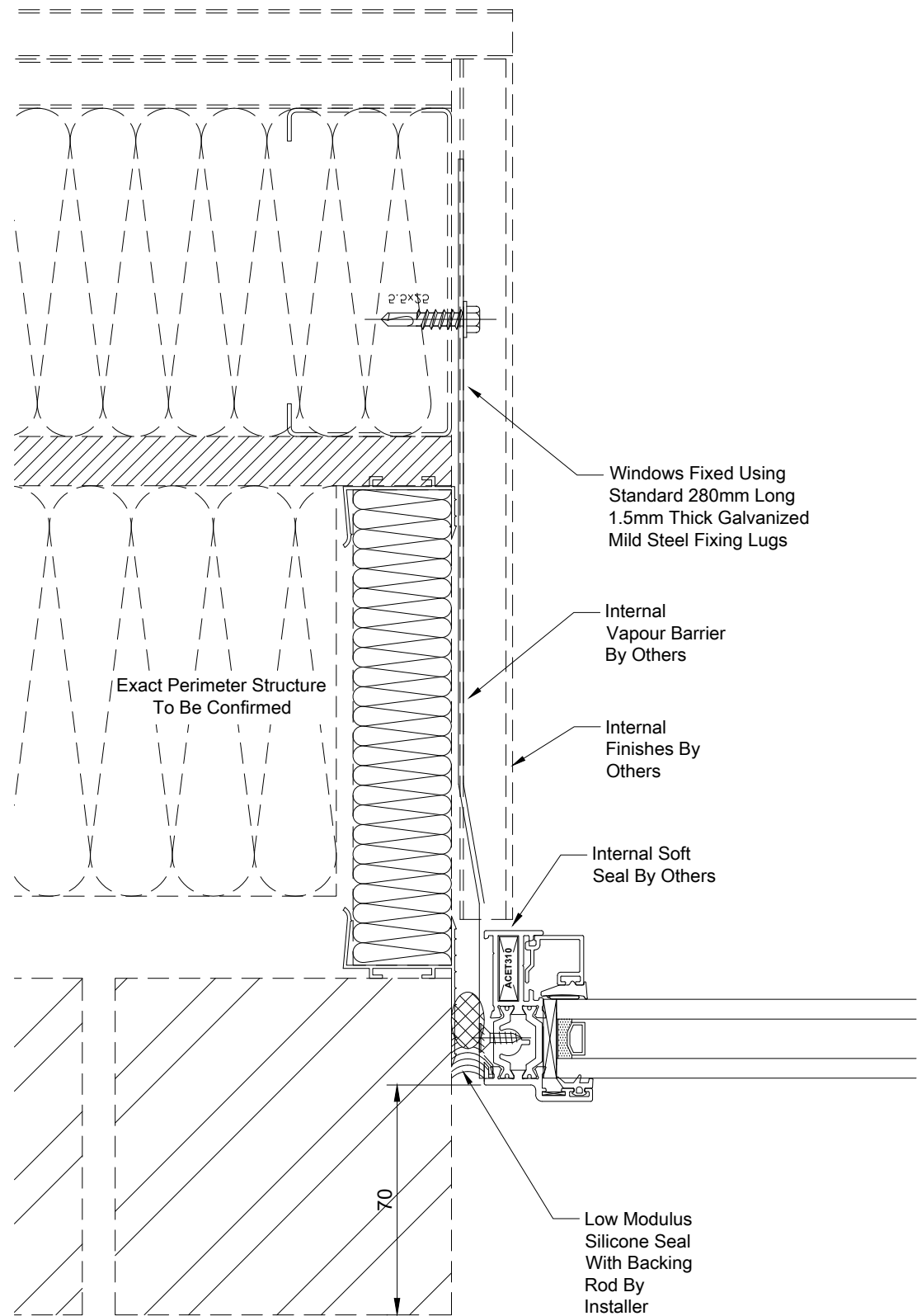
DRAWN: AES

SCALE: NTS@A3 CHECKED:

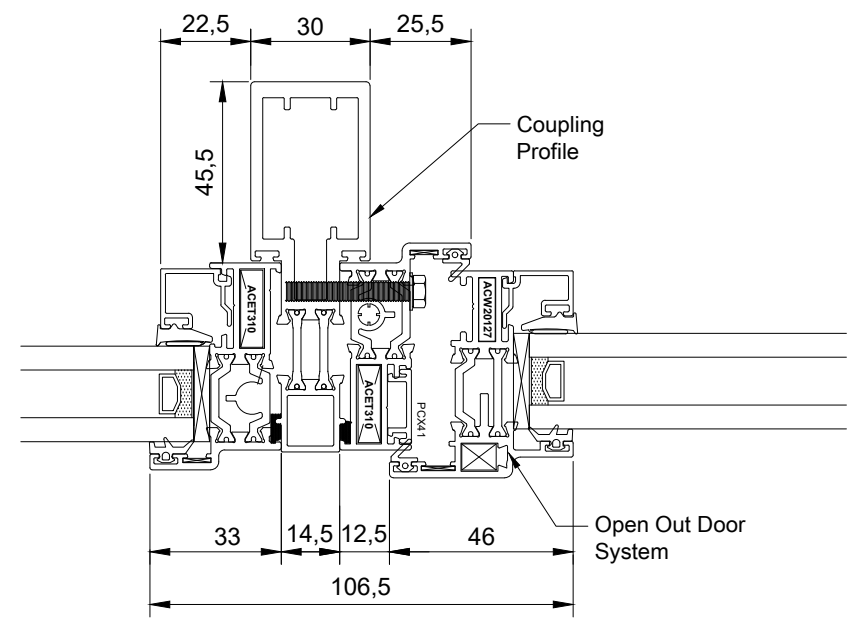
DRG. No.: ISSUE/REV:

DT-002 0

REV	DATE	REVISION
F1	25-03-21	First issue



DETAIL 1



DETAIL 2

FOR APPROVAL

ARCHITECT: SADA Architecture

CLIENT:

CONTRACTOR:

CONTRACT: 17 - HAMPSHIRE STREET

DRG. TITLE:
Typical Upper Floor Window / Door
Plan Sectional Details

ALUMINIUM ECO SOLUTIONS
Unit 2B
OAKHAM ENTERPRISE PARK
OAKHAM
RUTLAND
LE15 7TU

DO NOT SCALE IF IN DOUBT ASK

DRAWN: AES

SCALE: NTS@A3 CHECKED:

DRG. No.: ISSUE/REV:

DT-003 0

Window Specification

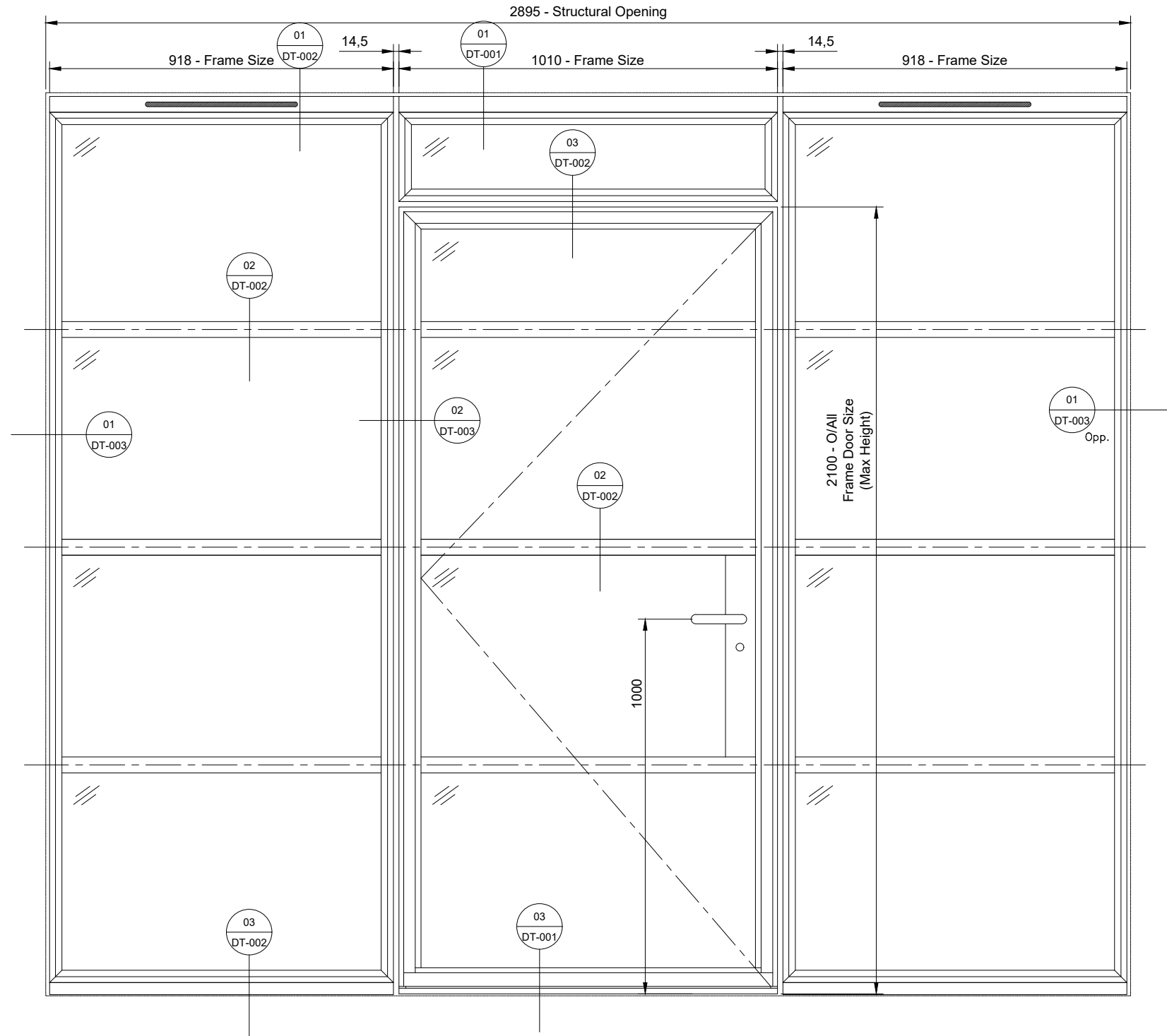
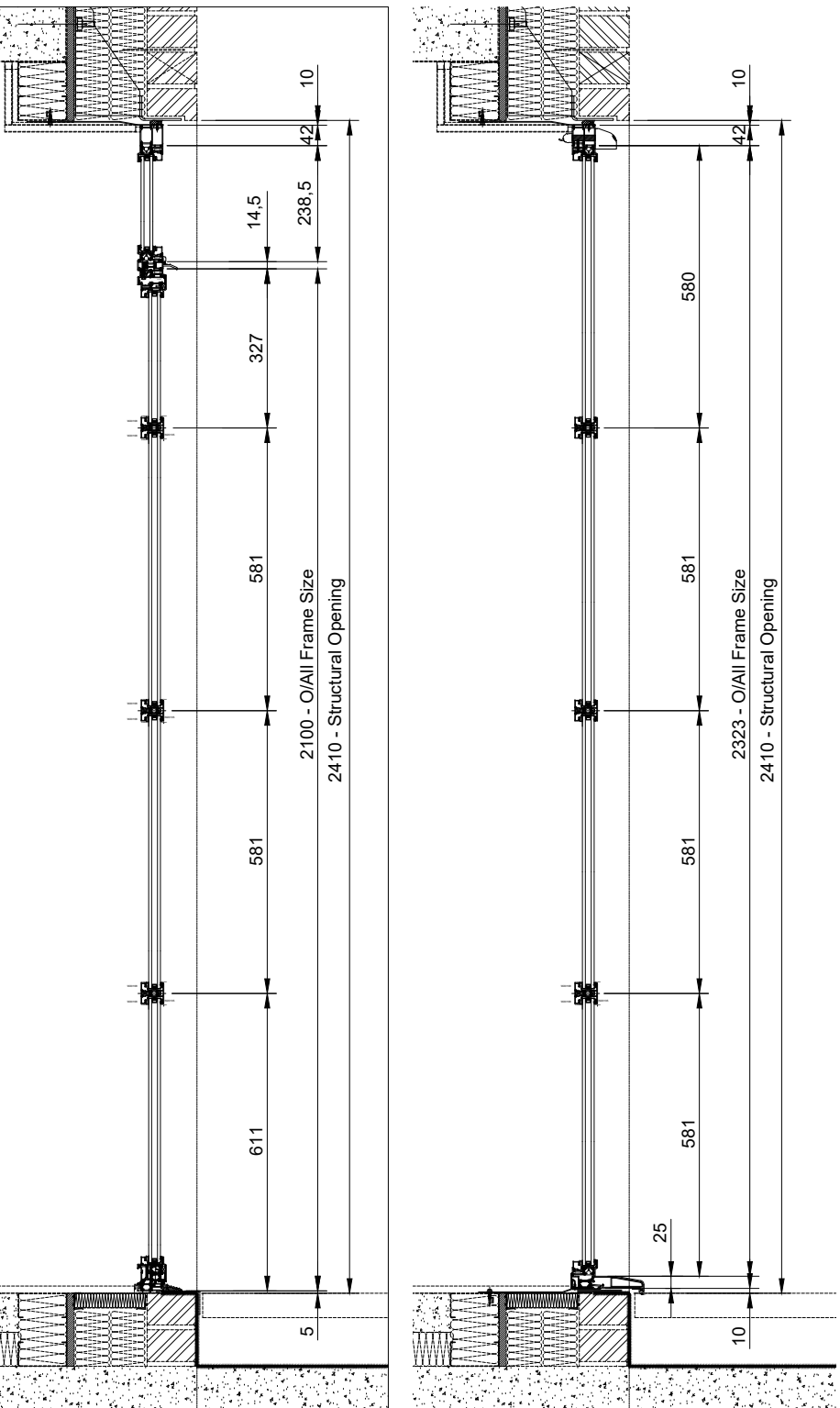
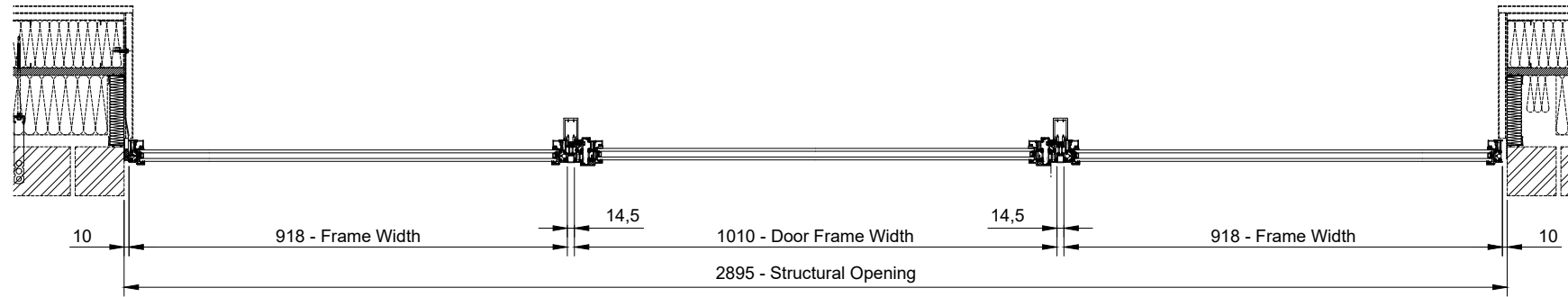
Smart Systems 'Alitherm Heritage' Windows And Doors. This System Is Designed To Offer A Modern Aluminium Thermally Broken Replacement To Steel Windows.

General Note -

- 1 - Windows And Doors To Meet PAS24 Security Requirements
- 2 - System To Achieve Minimum U-Value Of 1.4 W/m²k
- 3 - Windows To Be Painted Internally And Externally - PPC RAL 9005 Matt (Jet Black)
- 4 - Face Fitted Trickle Vents To Fixed Windows (Exact Locations To Be Determined)
- 5 - Ironmongery - Polished Chrome Handles, With Stainless Steel Hinges
- 6 - Doors To Be Fitted With 90 Degree Restrictor
- 7 - Windows To Have 100mm Lockable Restrictor
- 8 - Door Thresholds To Be Part M Compliant

Glazing Specification

28mm Thick DGU
 Outer - 4mm Thick Clear Toughened (Safety Glass)
 Cavity - 16mm Thick Black Warm Edge Spacer - 90% Argon Filled
 Inner - 6.8mm Thick Clear Annealed Laminate - Low E Coating (Safety Glass)



REV	DATE	REVISION
F1	25-03-21	First issue

FOR APPROVAL

ARCHITECT:	SADA Architecture
CLIENT:	
CONTRACTOR:	
CONTRACT:	17 - HAMPSHIRE STREET
DRG. TITLE:	Typical Upper Floor Window / Door Example Elevation
ALUMINIUM ECO SOLUTIONS Unit 2B OAKHAM ENTERPRISE PARK OAKHAM RUTLAND LE15 7TU	
DO NOT SCALE IF IN DOUBT ASK	
DRAWN:	AES
SCALE:	NTS@A3
CHECKED:	
DRG. No.:	GA-001
ISSUE/REV:	0

REV	DATE	REVISION
F1	25-03-21	First issue

FOR APPROVAL

ARCHITECT: SADA Architecture

CLIENT:

CONTRACTOR:

CONTRACT: 17 - HAMPSHIRE STREET

DRG. TITLE:
Typical Ground Floor Doors
Example Elevation

ALUMINIUM ECO SOLUTIONS
Unit 2B
OAKHAM ENTERPRISE PARK
OAKHAM
RUTLAND
LE15 7TU

DO NOT SCALE IF IN DOUBT ASK

DRAWN: AES

SCALE: NTS@A3 CHECKED:

DRG. No.: ISSUE/REV:

GA-002 0

Window Specification

Smart Systems 'Smart Wall' Windows And Doors.

General Note -

- 1 - Windows And Doors To Meet PAS24 Security Requirements
- 2 - System To Achieve Minimum U-Value Of 1.4 W/m²k
- 3 - Windows To Be Painted Internally And Externally - PPC RAL 9005 Matt (Jet Black)
- 4 - Face Fitted Trickle Vents To Fixed Windows (Exact Locations To Be Determined)
- 5 - Ironmongery - To Be Agreed Prior To Fabrication
- 6 - Doors To Be Fitted With 90 Degree Restrictor
- 7 - Door Thresholds To Be Part M Compliant
- 8 - Commercial Doors To Have Anti-Finger Trap Stiles

Glazing Specification

- 28mm Thick DGU
- Outer - 4mm Thick Clear Toughened (Safety Glass)
- Cavity - 16mm Thick Black Warm Edge Spacer - 90% Argon Filled
- Inner - 6.8mm Thick Clear Annealed Laminate - Low E Coating (Safety Glass)

