

# Cecil Sharp House

Planning D&A Statement, January 2021



Pamphilon Architects

studio@pamphilonarchitects.uk

# LIST ENTRY SUMMARY

This building is listed under the Planning (Listed Buildings and Conservation Areas) Act 1990 as amended for its special architectural or historic interest.

**Name:** CECIL SHARP HOUSE

**List entry Number:** 1130379

**Location:** CECIL SHARP HOUSE, REGENTS PARK ROAD. The building may lie within the boundary of more than one authority.

**County:** Greater London Authority

**District:** Camden

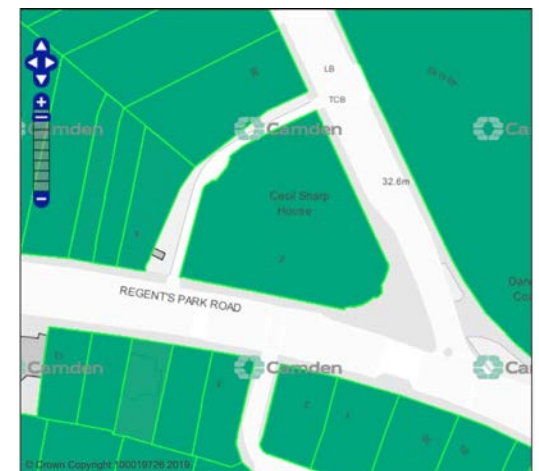
**District Type:** London Borough

**Grade:** II

**Date first listed:** 22-Dec-1987

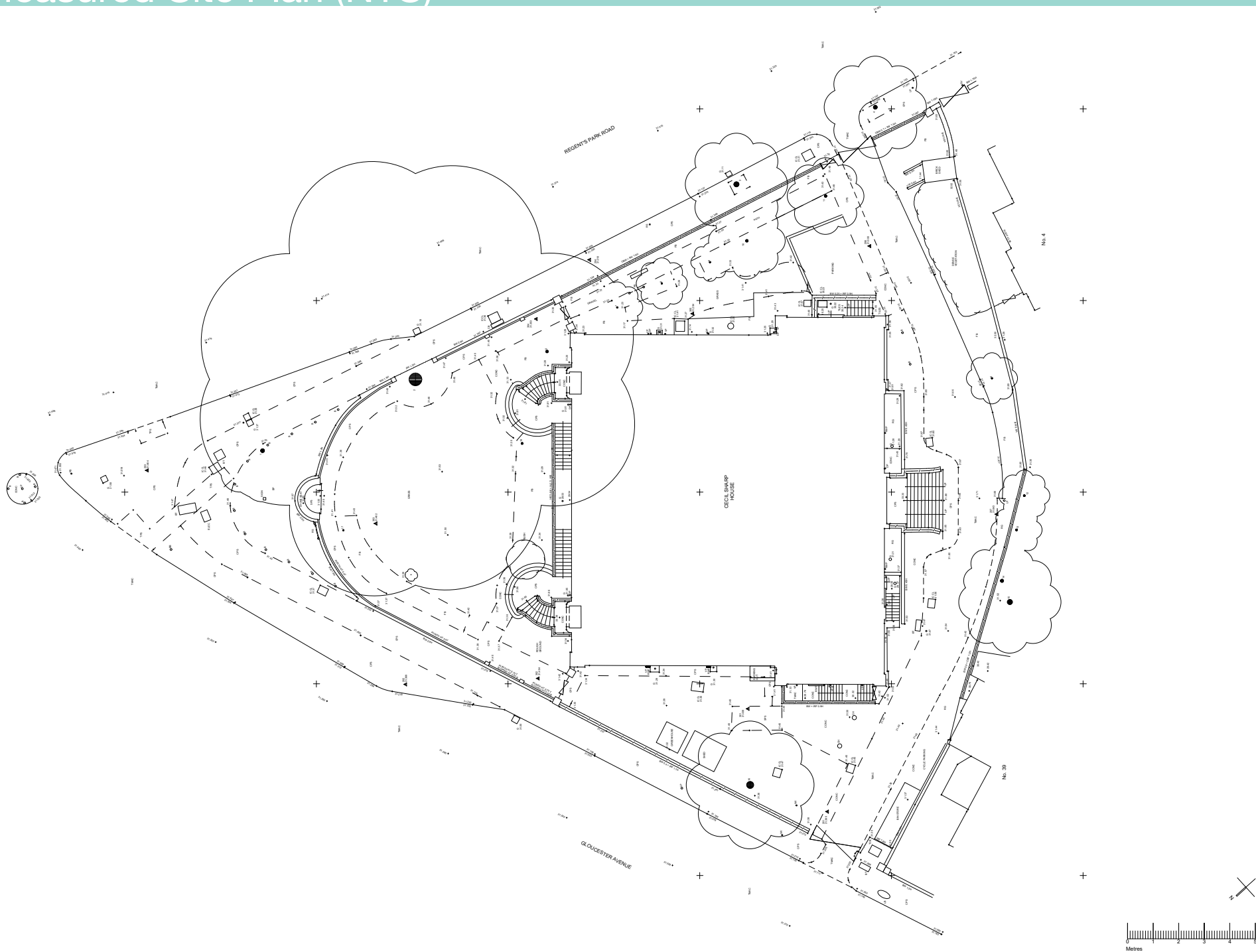
Headquarters of the English Folk Dance and Song Society. 1929-30. By HM Fletcher. For the English Folk Dance Society. Partly rebuilt 1949-51 after war damage. Brown brick and tiled, hipped roof. Neo-Georgian style. Rectangular plan on a triangular corner site. EXTERIOR: 1 to 2 storeys plus basement. Front facade of 1 tall storey, 5 bays. Square-headed stone-architraved doorways with wooden panelled doors to end bays; approached by steps with cast-iron railings. Gauged brick flat arches to tall metal framed windows with margin glazing and small panes articulating the double height dance hall. Pilaster strips at angles continue through parapet with brick band to terminate with stone ball finials. INTERIOR: following the post-war rebuilding a former musicians' gallery in the dance hall was replaced by a large specially commissioned (approx 20m long) mural painting by Ivon Hitchens which is of historic and artistic interest. Other walls of hall wooden panelled to window height. HISTORICAL NOTE: Cecil Sharp collected, edited, performed and wrote about English folk-songs and dances; he was the leader of the modern English folk-music revival. He joined the Committee of the Folk Song Society in 1904 and founded the English Folk Dance Society in 1911; the societies amalgamated in 1932. The building houses Sharp's library which he bequeathed on his death in 1924.

Listing NGR: TQ2844683756



Camden planning map

# Measured Site Plan (NTS)





# Aerial View





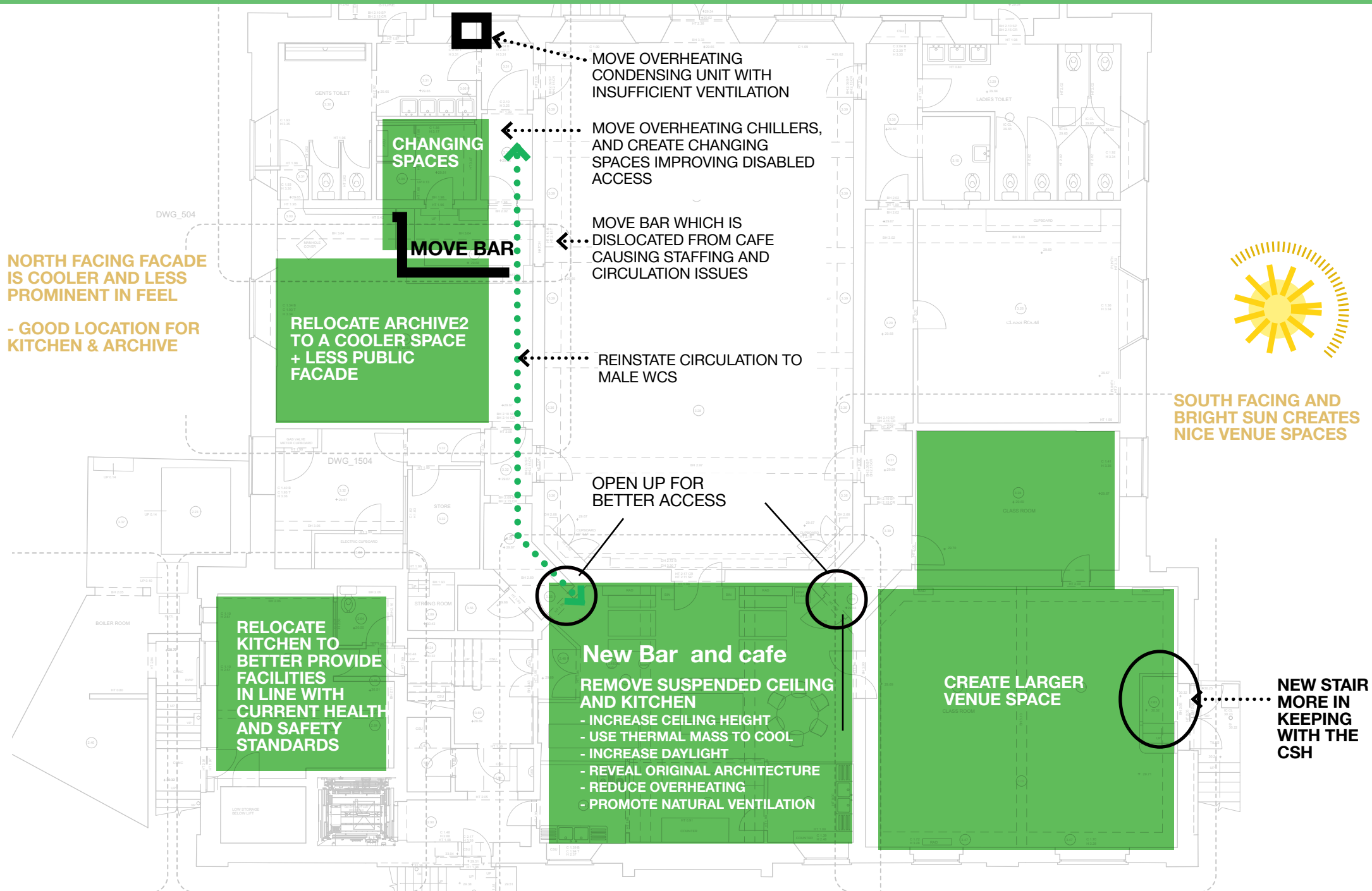
# THE BRIEF

# THE BRIEF

The Cecil Sharp House would like to:

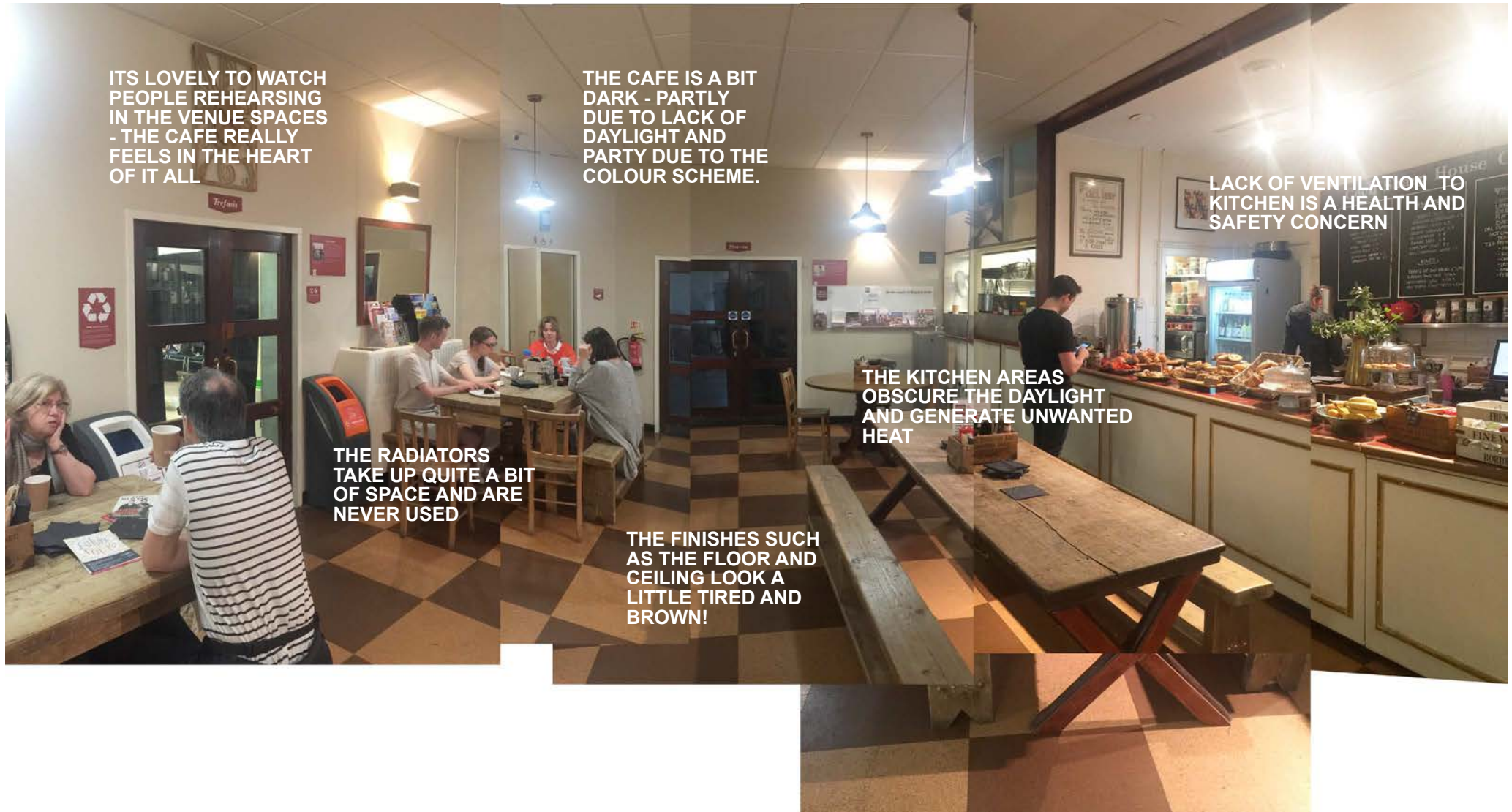
1. **Amalgamate and improve the bar and cafe** making them more space efficient and appealing, currently different staff are required for each area and circulation is rather confusing and problematic.
2. **Relocate the kitchen and improve facilities.** Currently Storrow has to be used as overspill for the kitchen in big events, whilst the kitchen in its current position blocks out daylight and ventilation to the already landlocked cafe. Moving the kitchen presents a great opportunity to improve daylight and ventilation to both the cafe and the kitchen, a current health and safety concern. The refurbishment will also bring about a more attractive and flexible catering provision and enable the CSH to not have to 'outsource' the catering so much, improving much needed revenue.
3. **Expand and Improve venues available for hire** by amalgamating archive 2 and Storrow making an additional much needed larger space for hire. Archive 2 will be relocated to the more suitable north facade, a naturally cooler space and less public facade.
4. **Upgrade inefficient mechanical and electrical installations saving energy (and money).** In particular the kitchen facilities and the condensing unit (currently housed within the Male WCs) which struggles to keep the chillers cold. The CSH have completed a thorough energy assessment with XC02, environmental service engineers, allowing them to identify realistic paths of improvement and reduce CO2 emissions where they can.

# THE BRIEF - ANALYSIS OF THE LOWER GRD FLOOR SPACES



# THE BRIEF - CAFE ANALYSIS

The cafe is in the heart of the Cecil Sharp House which is very positive, as from this position you can watch what is going on - it really feels like the 'hub' of the building. However whilst energetic and cosy, it is rather dark and could benefit greatly from a refurbishment. In addition the bar is in a completely different room and thus the two spaces require separate staff during events which is expensive and confusing spatially. Lastly the kitchen and suspended ceiling completely cut off natural daylight and ventilation and the feeling of any original features to the space resulting in a lack of character.



ITS LOVELY TO WATCH  
PEOPLE REHEARSING  
IN THE VENUE SPACES  
- THE CAFE REALLY  
FEELS IN THE HEART  
OF IT ALL

THE CAFE IS A BIT  
DARK - PARTLY  
DUE TO LACK OF  
DAYLIGHT AND  
PARTY DUE TO THE  
COLOUR SCHEME.

LACK OF VENTILATION TO  
KITCHEN IS A HEALTH AND  
SAFETY CONCERN

THE KITCHEN AREAS  
OBSCURE THE DAYLIGHT  
AND GENERATE UNWANTED  
HEAT

THE RADIATORS  
TAKE UP QUITE A BIT  
OF SPACE AND ARE  
NEVER USED

THE FINISHES SUCH  
AS THE FLOOR AND  
CEILING LOOK A  
LITTLE TIRED AND  
BROWN!



# PROPOSED EXTERNAL WORKS

# PROPOSALS: SOUTH ELEVATION FROM THE STREET

External works indicated on the proposed drawing (NB refer to the drawings for a complete list of proposed works):

- Some additional lighting at nighttime such as fairy lights and solar powered lamps to improve way finding at night to the entrance which is to the rear of the building
- Cafe 'Open/Closed' sign fixed to railings
- Uplighters to illuminate 'CECIL SHARP HOUSE'
- Fairy lights strung between the building and the trees to help with way finding to the entrance for evening events. Fixings to the building to be minimal and of stainless steel.
- Ground lights to help with way finding to the entrance for evening events.
- Prune trees to help visibility and way finding.



# PROPOSALS: EAST ELEVATION FROM THE STREET

## Proposed Works:

- Repaint the pole as existing with new metal coloured ribbons (fabric ribbons have been stolen in the past)
- Investigate options of relocating the street sign with highways to tidy up this historic wall
- Repair to cracked brickwork as required

NB refer to the drawings for a complete list of proposed works.





# PROPOSALS: NORTH WEST ELEVATION

We would propose to:

- Refurbish and replace the crittal windows as highlighted within the drawings and replace redundant vents with glass.





# PROPOSALS: NORTH EAST ELEVATION

We would propose to:

- Refurbish crittall windows and door as detailed on the drawings.
- Repair and paint the cast iron railing as existing
- Clean the brick work around the proposed kitchen to smarten up this part of the facade.
- 2 no condensers for the kitchen facilities stacked one upon each other (refer to drawings)





# PROPOSALS: NORTH EAST ELEVATION

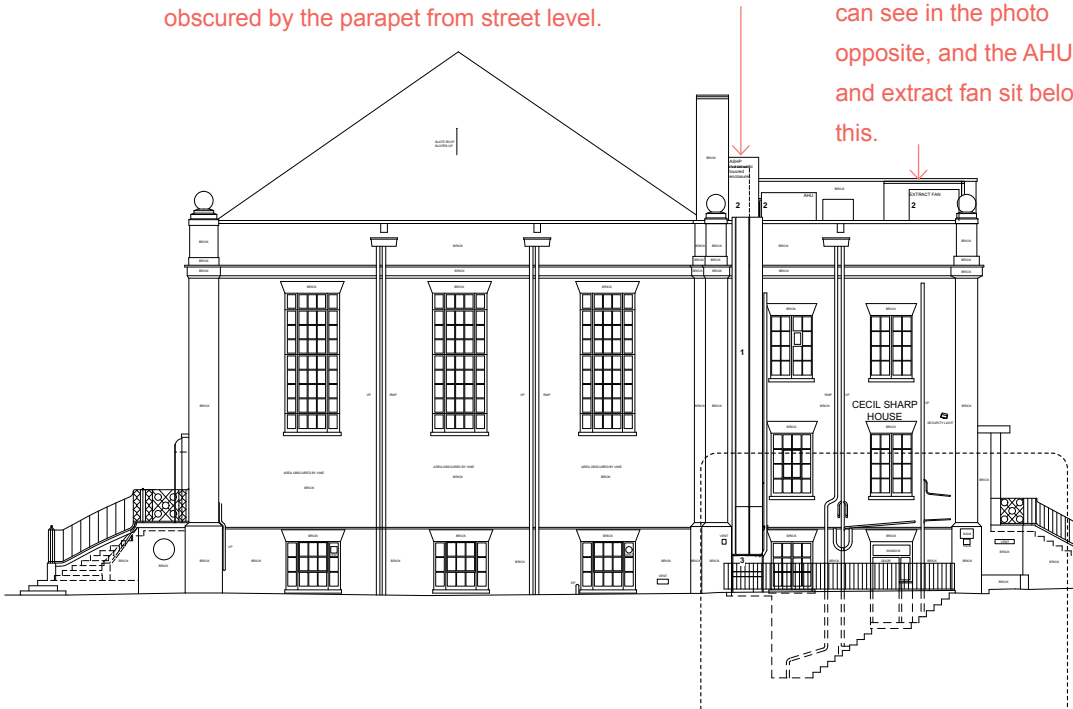
The proposals show:

- Ductwork to service plant on the roof
- Plant on the roof to service the new kitchen

These proposed services will be obscured by both the tree, parked vehicles, the chimney and parapet and thus the visual impact is greatly reduced. Currently the service provision at the CSH is hugely inadequate and this additional infrastructure is required to service a modest catering facility. An acoustic survey has been completed (refer to the appendix) where XC02 consultants have recommended a number of acoustic provisions to ensure the proposals are acceptable in this residential area. The only visible acoustic louvres are those to the ASHP and as shown.

We envisage only the ASHP and ductwork being visible from street level. The AHU and extract fan would be obscured by the parapet from street level.

The existing lift overrun is barely visible as you can see in the photo opposite, and the AHU and extract fan sit below this.



## Existing



## Proposed





**PROPOSED INTERNAL WORKS**

# CAFE DESIGN INSPIRATION - THE ORIGINAL DESIGN

It is lovely to see the original cafe.  
You can see the exposed ceiling and  
windows and full length servery which  
we would like to reintroduce.



# CAFE DESIGN - PROPOSED

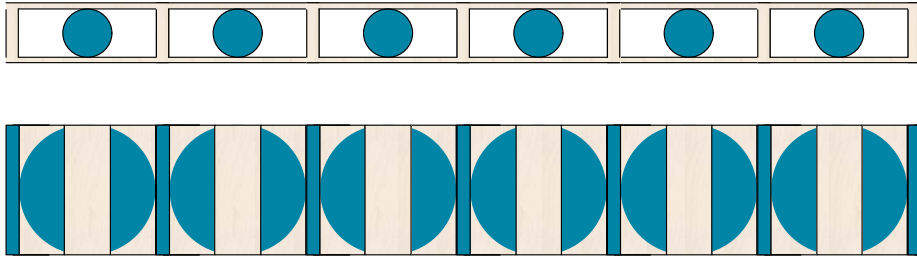
The refurbished cafe should be lighter and brighter with the original windows restored and the ceiling height increased with the removal of the suspended ceiling. The new servery will be full length and constructed from timber taking reference from existing geometries within the CSH. It is intended that this is a carefully constructed piece of joinery in keeping with the ethos of the building and its function.





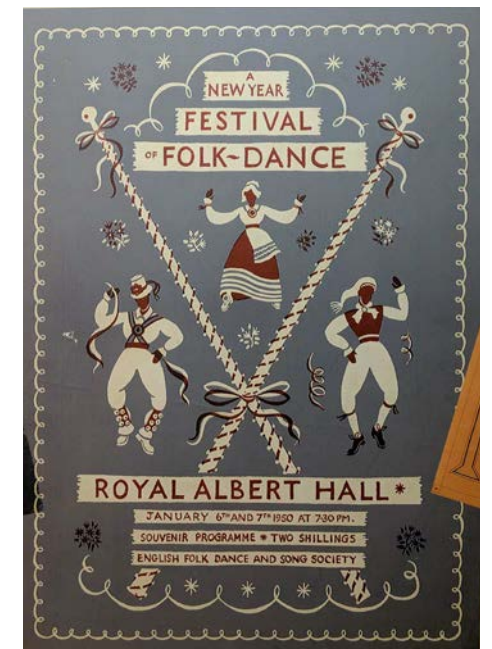
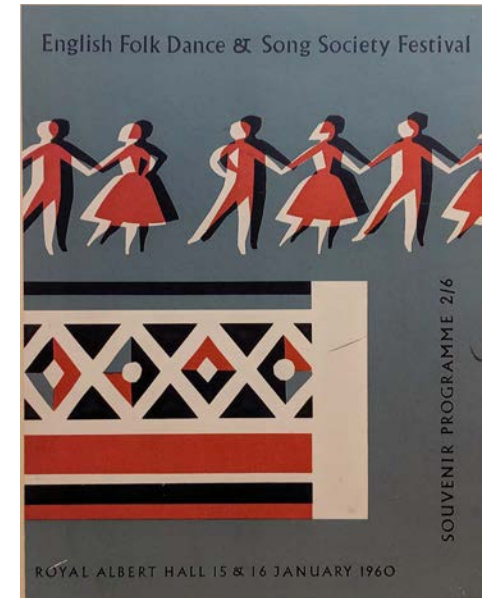
# CAFE DESIGN INSPIRATION - EXISTING DECORATIVE FEATURES

We have drawn inspiration from the existing decorative features for the bar design



# CAFE DESIGN INSPIRATION - EXISTING DECORATIVE FEATURES

These old 50's & 60's posters have inspired the proposed colour theme of the bar





# PRECEDENTS: CAFE SPACES & TIMBER BARS

We propose a carefully crafted timber bar which would seem to be in the ethos of the organisation and building.





# PRECEDENTS: CAFE SPACES & EXPOSED CEILINGS

We propose to expose the existing ceiling and services to increase head height and thermal mass (thus hopefully better regulating temperature in the cafe). All services will be painted white to help them 'disappear'

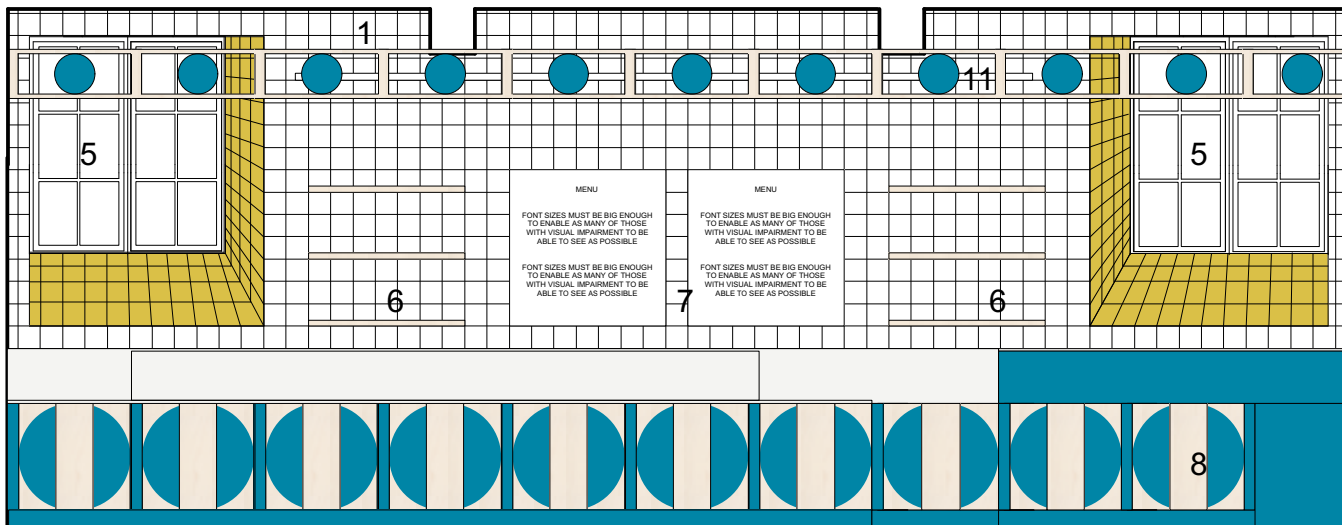
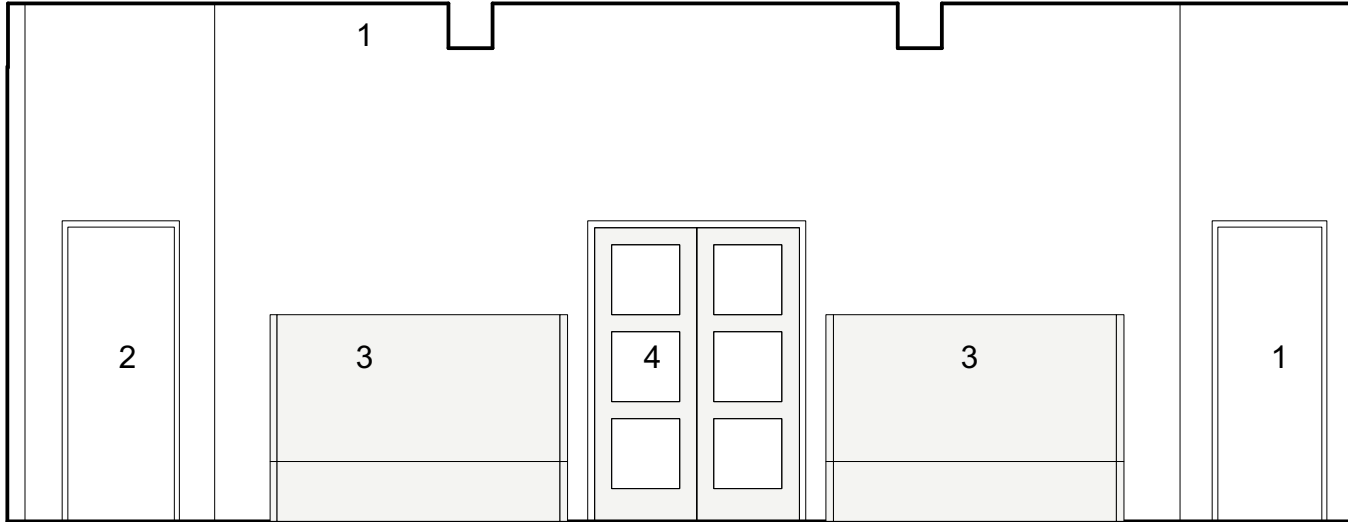




# THE CAFE - Existing and proposed visuals



# THE CAFE - Proposed drawings



## Key to Proposed Works

1. Remove suspended ceiling and expose ceiling. Services to be surface fixed to ceiling.
2. Widen doorway.
3. Remove radiator and replace with fitted timber bench as drawn
4. Refurbish door, strip and paint.
5. New windows (refer to elevation) with Internal fly screen on roller blind
6. Timber shelving.
7. Tiles on the wall and menus surface fixed to the wall.
8. Servery & washing up zone
9. Walls painted, colour TBC.
10. New skirting painted, colour TBC.
11. Timber lattice to hold lighting for the bar and obscure services required for the servery



# STORROW

We would propose to refurbish Storrow Hall to enable this space to become part of the cafe as spill out for larger events and make it a more attractive venue space.

relocate radiator



The new stair and storage is to be made of timber and simple in its design (refer to the drawings)



# ACCESS

Access onto the site or parking provision is not proposed to change in anyway from existing.

The proposed 'cleanup' of signage and nighttime illumination of the Cecil Sharp House lettering should help aid access into the site in the evening hours given that the entrance is somewhat obscured being at the back of the site.

CSH is constantly seeking ways to improve access into their building. These proposals seek to improve access in the following areas:

- The proposed sliding front door will also improve easy access into the building
- The Changing Spaces facility will enable those who cannot use standard accessible toilets to access the CSH. This facility will have more space to enable movement and assistance and equipment, including a height adjustable changing bench and a hoist.
- The servery is to be set at 850 high for the full length to improve visibility to those in a wheelchair
- Reintroduction of daylighting should help those with visual impairment

# **APPENDIX**

- 1. Scope of Works**
- 2. Heritage Statement**
- 3. Structural proposals**
- 4. M&E proposals**
- 5. Accoustic proposals**
- 6. Catering consultant's Proposals**
- 7. Proposed sliding front door**
- 8. Proposed PV Panels**



# 1. SCOPE OF WORKS

# SCOPE OF WORKS

The below is a key to the areas covered in the scope of works. This has been submitted as a separate document





## 2. HERITAGE STATEMENT

We have been working with Forum Heritage Services to ensure that our design is sensitive to the listed building and does not harm any important architectural features.

## Cecil Sharp House, The English Folk Dance and Song Society

### Heritage Issues

#### 1.0 Introduction

- 1.1 Forum Heritage Services have been commissioned to undertake a heritage appraisal of Cecil Sharp House, Regents Park Road, London to inform proposed changes to the basement area.
- 1.2 Cecil Sharp House is the purpose-built home of The English Folk Dance and Song Society (EFDSS). It was added to the List of Buildings of Special Architectural or Historic Interest on 22<sup>nd</sup> December 1987 at Grade II. The building sits within the Primrose Hill Conservation Area. The list description for the building is as follows:

*Headquarters of the English Folk Dance and Song Society. 1929-30. By HM Fletcher. For the English Folk Dance Society. Partly rebuilt 1949-51 after war damage. Brown brick and tiled, hipped roof. Neo-Georgian style. Rectangular plan on a triangular corner site. EXTERIOR: 1 to 2 storeys plus basement. Front facade of 1 tall storey, 5 bays. Square-headed stone-architraved doorways with wooden panelled doors to end bays; approached by steps with cast-iron railings. Gauged brick flat arches to tall metal framed windows with margin glazing and small panes articulating the double height dance hall. Pilaster strips at angles continue through parapet with brick band to terminate with stone ball finials. INTERIOR: following the post-war rebuilding a former musicians' gallery in the dance hall was replaced by a large specially commissioned (approx 20m long) mural painting by Ivon Hitchens which is of historic and artistic interest. Other walls of hall wooden panelled to window height. HISTORICAL NOTE: Cecil Sharp collected, edited, performed and wrote about English folk-songs and dances; he was the leader of the modern English folkmusic revival. He joined the Committee of the Folk Song Society in 1904 and founded the English Folk Dance Society in 1911; the societies amalgamated in 1932. The building houses Sharp's library which he bequeathed on his death in 1924.*

- 1.3 Cecil Sharp House comprises a large performance space to the ground floor with reception and offices to the upper storeys to the rear and a café and further smaller rehearsal and performance spaces in the basement.

#### 2.0 Building evolution

- 2.1 The building was constructed c1929-30 through public donations to house a collection of Cecil Sharp's books and song scripts and provide a home for the English Folk Dance Society (EFDSS). Cecil Sharp House was hit by four incendiary bombs during WWII, in September 1940. The building was reconstructed c1948-49 where-in a number of changes were made to the internal plan form and throughout the building (please refer to Building Phase plan). There were a number of more radical schemes for rebuilding which did not come to fruition but one of the major additions to the building was the commissioning and installation of a mural by English painter Ivon Hitchens (1893-1979). This replaced a musicians' gallery in the main performance space which now dominates this space but was located on the wrong side of the space for which it was designed.



# HERITAGE STATEMENT

Cecil Sharp House, Regents Park Road, London

Pre-application summary

- 2.2 Cecil Sharp House continues to thrive as a music and performance venue and archive for the EFDSS.

### 3.0 Summary of Significance

- 3.1 The historical significance of this building is the original use of the building still being maintained and supported through public support and interest in English folk dance and song. The architectural significance of this building is in its strict use of the Neo-classical idiom but with hints of a jazz modern style which is reflected in the monumental but functional scale of the building and its window and ironwork detailing. There is also a strong affiliation with the arts and crafts with the high quality craftsman-like finishes to doors, joinery and in particular the entrance approach and hall. This has been retained and enhanced through changes in the post-war rebuilding.
- 3.2 There are three key phases of change (see Building Phase plan) within the building which are reflective of both the need to pay respect to the original buildings conceptual design (in terms of spaces and material use) whilst upgrading to reflect a renewed life for the EFDSS post-war and to keep the building relevant and functional in the 21<sup>st</sup> century. All of the building has been affected to a degree by the changes which were made post-war in the substantial rebuilding of the service areas of the building. But perhaps the most significant intervention was the re-organisation of the principal performance space and the addition of a monumental piece of art by a notable English Painter from the 'London Group' of artists.
- 3.3 The basement area (which is the subject of proposed change in the planned planning and listed building consent application) has not avoided change. It can be seen from the building phase plan that original spaces have been altered over time and includes the substantial alterations to a former caretakers flat (to the north-east corner of the basement plan) and to the café space (formerly named the buffet area).

### 4.0 Proposed changes

- 4.1 The proposals comprise general upgrading of the café area to facilitate better opportunities for the provision of food and drink for visitors and users of the performance space and a general up-lifting of the area making the space brighter, better ventilated and more inviting.
- 4.2 The changes will predominantly affect areas which have been either altered as part of immediate post-war refurbishment or later interventions, such as the insertion of the lift (2013). There will be a limited loss of original fabric to facilitate a better route for food preparation and serving.

### 5.0 Key challenges (to be addressed as part of the application)

- 5.1 In undertaking work to this part of the building careful consideration needs to be given to the detailed design and material finish of:
- Lighting fixtures and fittings
  - Floor finishes
  - Proposed food counters – in the spirit of the arts and crafts movement (good design, handmade, natural materials)
  - Use of colour

Cecil Sharp House, Regents Park Road, London

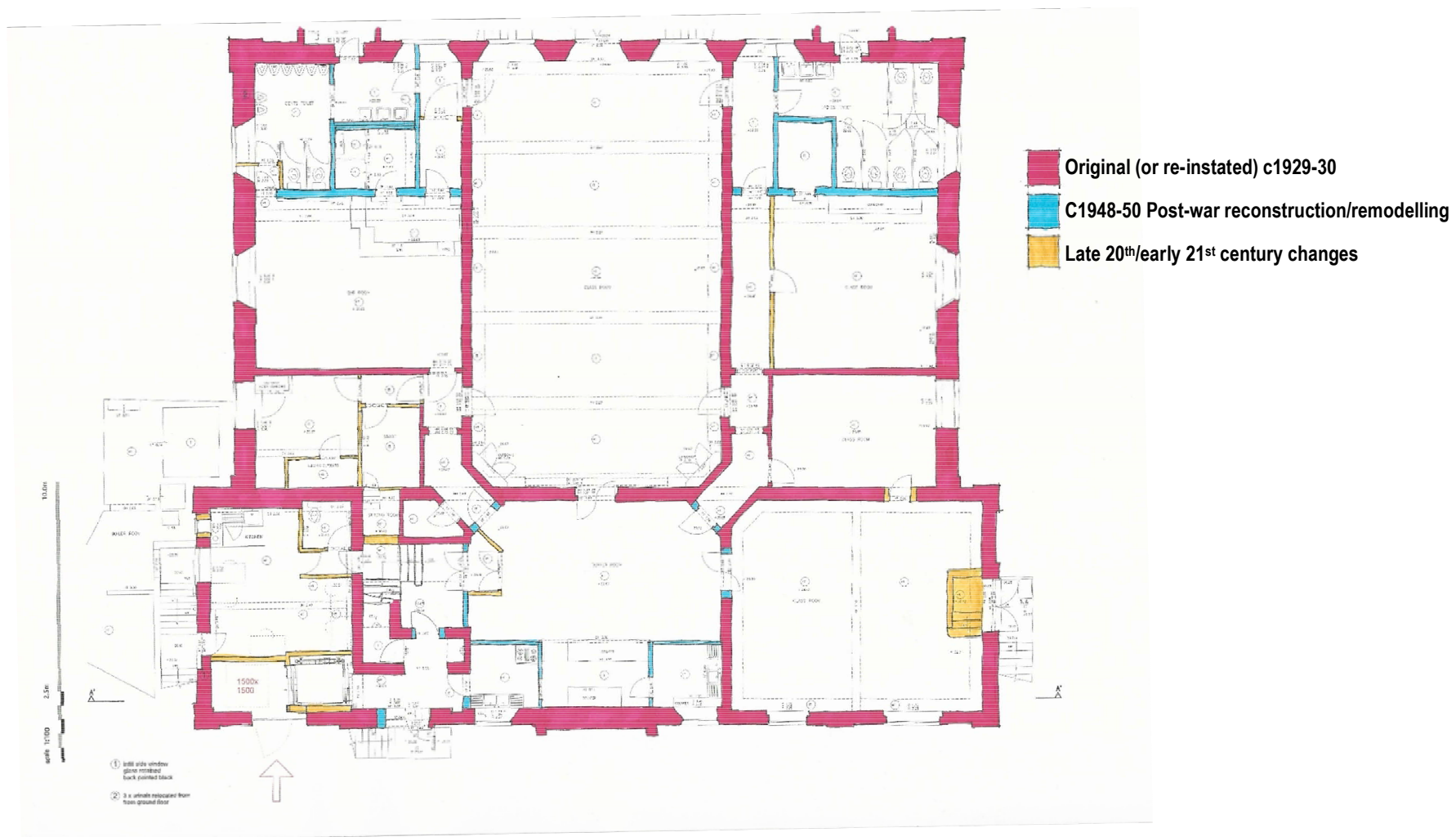
Pre-application summary

- Signage design and requirements
- Distinguishing between the old and the new

### 6.0 Conclusion

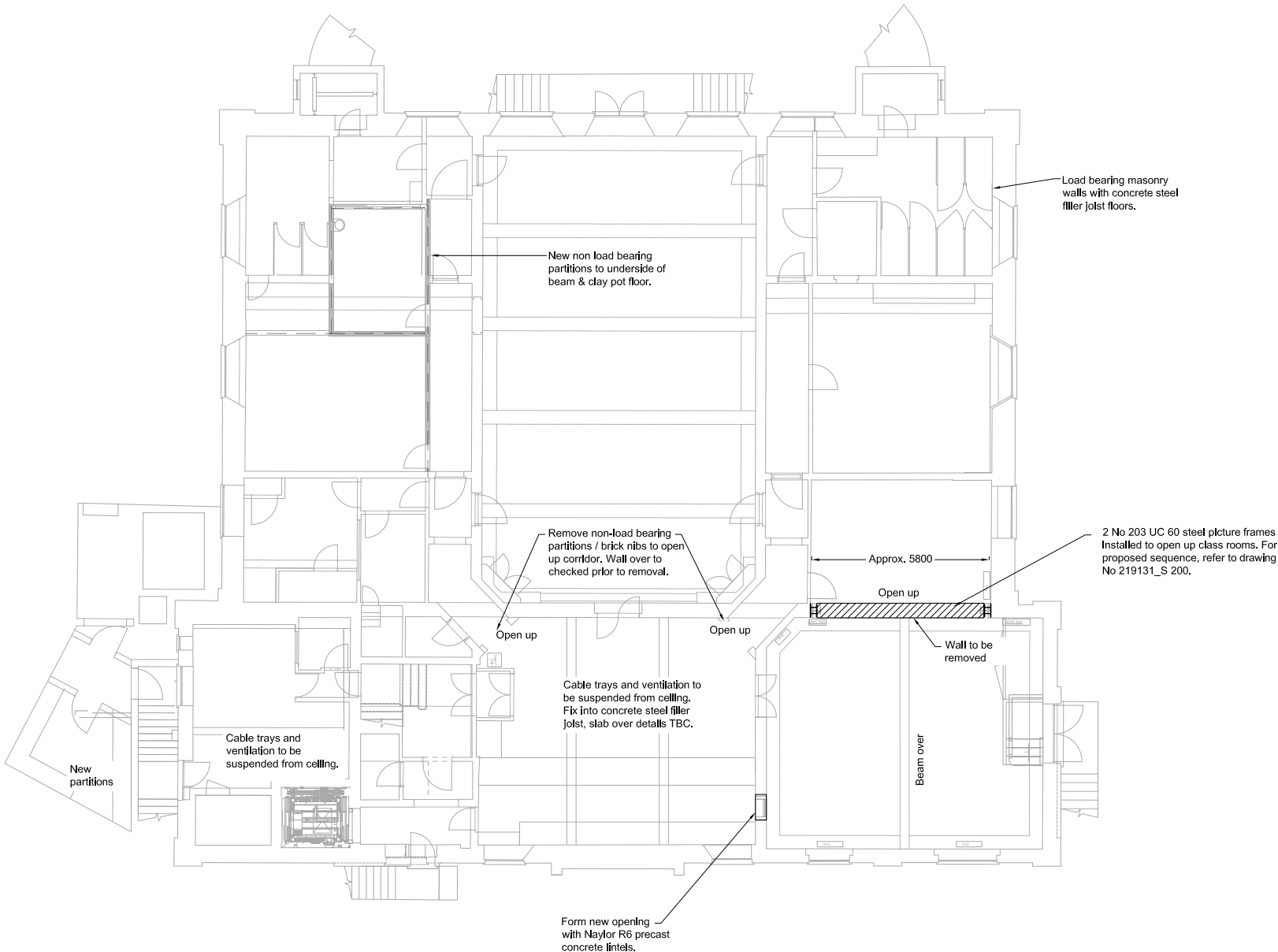
- 6.1 The applicants have sought early discussions with relevant professionals in order to ensure the significance of this Grade 2 listed building has been understood so that it can inform proposed changes to this designated heritage asset.

## Building Phase Plan



### 3. STRUCTURAL PROPOSALS





Lower Ground Floor Plan  
Scale 1 : 100

**General**  
1.1 This drawing is to be read in conjunction with all Architect's, Engineer's and Services Engineer's drawings and specifications.  
1.2 Do not scale from any of the structural drawings. All dimensions to be verified on site and any discrepancies should be Highlighted.  
1.3 The contractor is responsible for the stability of the building and adapting structures during construction and shall design, install, adapt and maintain all necessary propping and temporary works. A method statement for the temporary works must be submitted to the contractor administrator for comment before work begins.  
1.4 Fire protection to all structural elements to Architect's details.  
1.5 All waterproofing to the Architect's details.  
1.6 All materials to comply with the relevant British Standard.

**Masonry**  
4.1 All materials and workmanship to comply with BS 5628.  
4.2 New blockwork to have 7N/mm<sup>2</sup> minimum crushing strength, minimum density of 1200kg/m<sup>3</sup> and to be set in 1:1.8 cement/fine sand mortar.  
4.3 New blockwork to have 20N/mm<sup>2</sup> minimum crushing strength and to be set in 1:1.8 mortar.  
4.4 All cavity wall ties and restraint straps to be stainless steel and to be fixed widely in accordance with the manufacturer's specification.  
4.5 Cavity wall ties are to be provided at min. 900 horizontal and 450 vertical centres and within 225 of all reveals.  
4.6 For cavities up to 150mm wide use Type 1 wall ties (Ancon ST1 or similar approved), with minimum embedment depth in inner leaf of 85mm. For cavities over 150mm wide refer to MNP for further specification.  
4.7 All tie types, positioning and installation to be in accordance with BS5628-1.  
4.8 New lintels over standard door openings (max. 1000 wide) in internal loadbearing walls to be precast, pre-stressed lintels (Naylor R6 or similar unless noted otherwise).  
4.9 Vertical movement joints in masonry are required as follows:  
Brickwork - Every 12m horizontally  
Blockwork - Every 6m horizontally  
Refer to MNP layout for positions of movement joints.  
Positions to be confirmed by Architect prior to construction.

**Steelwork**  
5.1 All materials and workmanship to comply with BS 5950.  
5.2 Unless noted otherwise all new steelwork to be grade S355 J0 (External), JR (Internal) to BS EN 10025. Bolts to be grade 8.8 equivalent and hot dip galvanized.  
5.3 All steelwork to be thoroughly cleaned by grit blasting to grade Sa2.5 and painted with 2 coats of zinc phosphate primer to a minimum overall thickness of 75 microns.  
5.4 All steelwork built into a solid or cavity external wall should have 2 coats of high build bituminous paint.  
5.5 The contractor must allow for tolerance in fabrication and provide all slanting and packing necessary to obtain the correct levels shown on the drawings.  
5.6 All steelwork to be supported on 440 long x 100 wide x 215 deep mass concrete padstones, ensuring 100mm bedding, unless noted otherwise.  
5.7 Connections to be designed and detailed by fabricator.

P2	Minor changes	21.04.20	DJ
P1	Issued for planning	27.03.20	DJ

REV	COMMENTS	DATE	CHK
-----	----------	------	-----

STATUS

**FOR PLANNING**



**mason navarro pledge**  
Consulting Civil and Structural Engineers  
Bancroft Court  
Hitchin  
Hertfordshire, SG5 1LH  
Telephone: 01462 632012  
Email: office@mnp.co.uk  
www.mnp.co.uk

**CECIL SHARP HOUSE**

**CECIL SHARP HOUSE CAFE  
REFURBISHMENT**

PROPOSED STRUCTURAL  
WORKS TO CAFE AND  
CLASS ROOM

SCALE	DRAWN BY	DATE
-------	----------	------

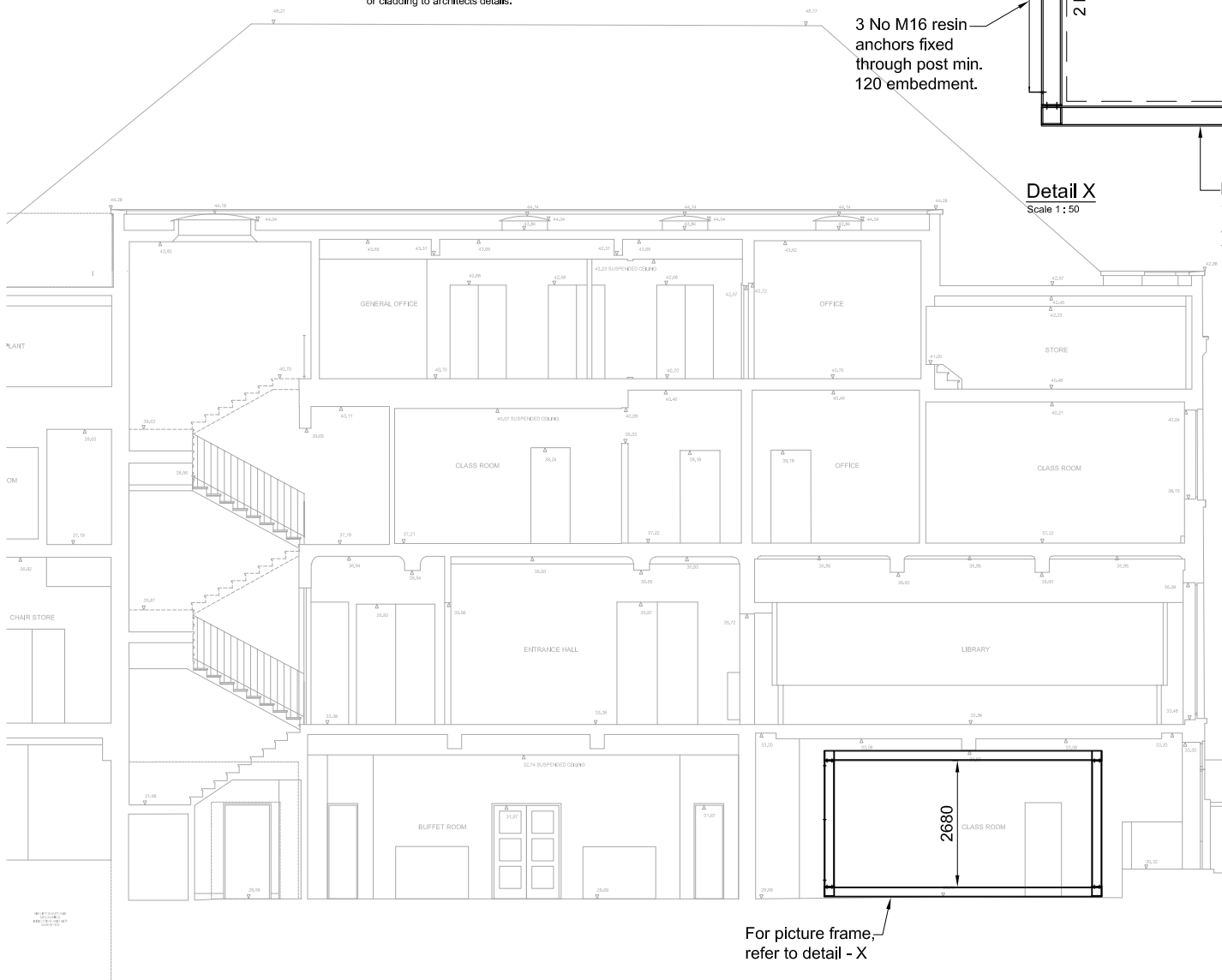
1:100 @ A2	JS	25.03.20
------------	----	----------

DRAWING NO.	REV
-------------	-----

219131-S-GA 100	P2
-----------------	----

**Proposed Sequence :-**

1. Wall over to be needed above and temporary propped to slab level, beam over to be propped to Ground level.
2. Brickwork to be carefully removed.
3. Steel frames to be installed.
4. Concrete encase the bottom member.
5. Restrain the columns to the retaining brickwork with resin anchors.
6. Pre load the top steels to induce 50 % of theoretical deflection (Assume 10mm at mid span).
7. Dry pack the gap between the steel beams and brickwork over.
8. Remove temporary props.
9. Fire protect with intumescent paint or cladding to architect's details.



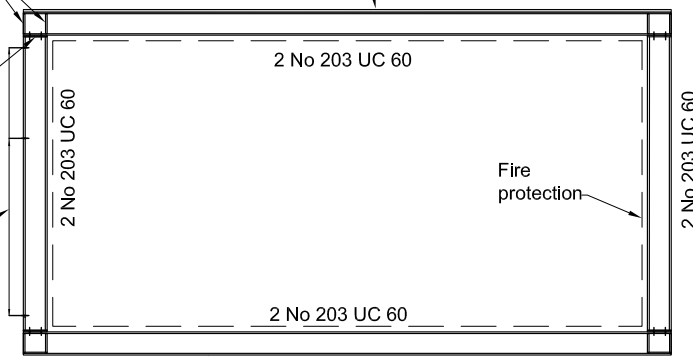
15mm thk stiffeners

215x215x15mm thk end plate &amp; 4m 20 (8.8) bolts

3 No M16 resin anchors fixed through post min. 120 embedment.

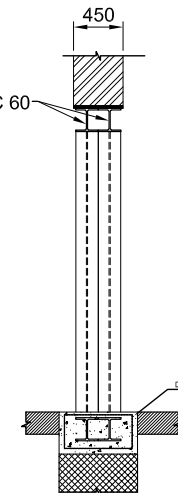
**Detail X**  
Scale 1 : 50

25mm dry pack 1:1 sand : cement. Earth damp well rammed in.



Bottom beam to be wrapped in d98 fabric and concrete encased: 100 bot. &amp; sides, 50 top

2 No 203 UC 60

**Section Y-Y**  
Scale 1 : 50

For picture frame, refer to detail - X

**Section through Cafe and Class room**

Scale 1 : 100

**General**

- 1.1 This drawing is to be read in conjunction with all Architect's, Engineer's and Services Engineer's drawings and specifications.
- 1.2 Do not scale from any of the structural drawings. All dimensions to be verified on site and any discrepancies should be highlighted.
- 1.3 The contractor is responsible for the stability of the building and adjoining structures during construction and shall design, install, adapt and maintain all necessary propping and temporary works. A method statement for the temporary works must be submitted to the contractor administrator for comment before work begins.
- 1.4 Fire protection to all structural elements to Architect's details.
- 1.5 All waterproofing to the Architect's details.
- 1.6 All materials to comply with the relevant British Standard..

P1 Issued for planning 27.03.20 DJ

REV COMMENTS DATE CHK

STATUS

**FOR PLANNING****mnp****mason navarro pledge**

Consulting Civil and Structural Engineers

Bancroft Court Telephone: 01462 832012

Hitchin Email: office@mnp.co.uk

Hertfordshire, SG5 1LH www.mnp.co.uk

© 2019

PROJECT

**CICIL SHARP HOUSE CAFE REFURBISHMENT**

DRAWING TITLE

**SECTION AND PICTURE FRAME DETAIL**

SCALE DRAWN BY DATE

1:100 @ A3 JS 26.03.20

Drawn By: REV

**219131-S- S200 P1**

## 4. M&E PROPOSALS





4no. VRF PIPEWORK FROM ROOFTOP CONDENSERS TO RUN VERTICALLY TO AND FROM FCU, EXTERNALLY AGAINST FACADE. MINIMUM RISER SIZE OF 400 x 100mm.

VERTICAL VENTILATION DUCTWORK (850x400mm) FOR SUPPLY TO DROP FROM ROOFTOP AHU TO KITCHEN. PRIMARY COOLING TO BE PROVIDED VIA AHU.

VERTICAL VENTILATION DUCTWORK (850x400mm) FOR EXTRACT TO RUN FROM KITCHEN AND UP TO ROOFTOP AHU

HORIZONTAL VENTILATION DUCTWORK (850x400mm) FOR EXTRACT FROM ROOFTOP AHU TO KITCHEN.

FINAL DISTRIBUTION ROUTE TO BE CONFIRMED AT NEXT STAGE WITH DEVELOPED BACKGROUNDS AND KITCHEN LAYOUT

1.3m<sup>2</sup> OF GRILLE AREA REQUIRED, FOR SUPPLY (ASSUMING 50% FREE AREA)

10kW CONCEALED CEILING FCU FOR SUPPLEMENTARY KITCHEN COOLING.

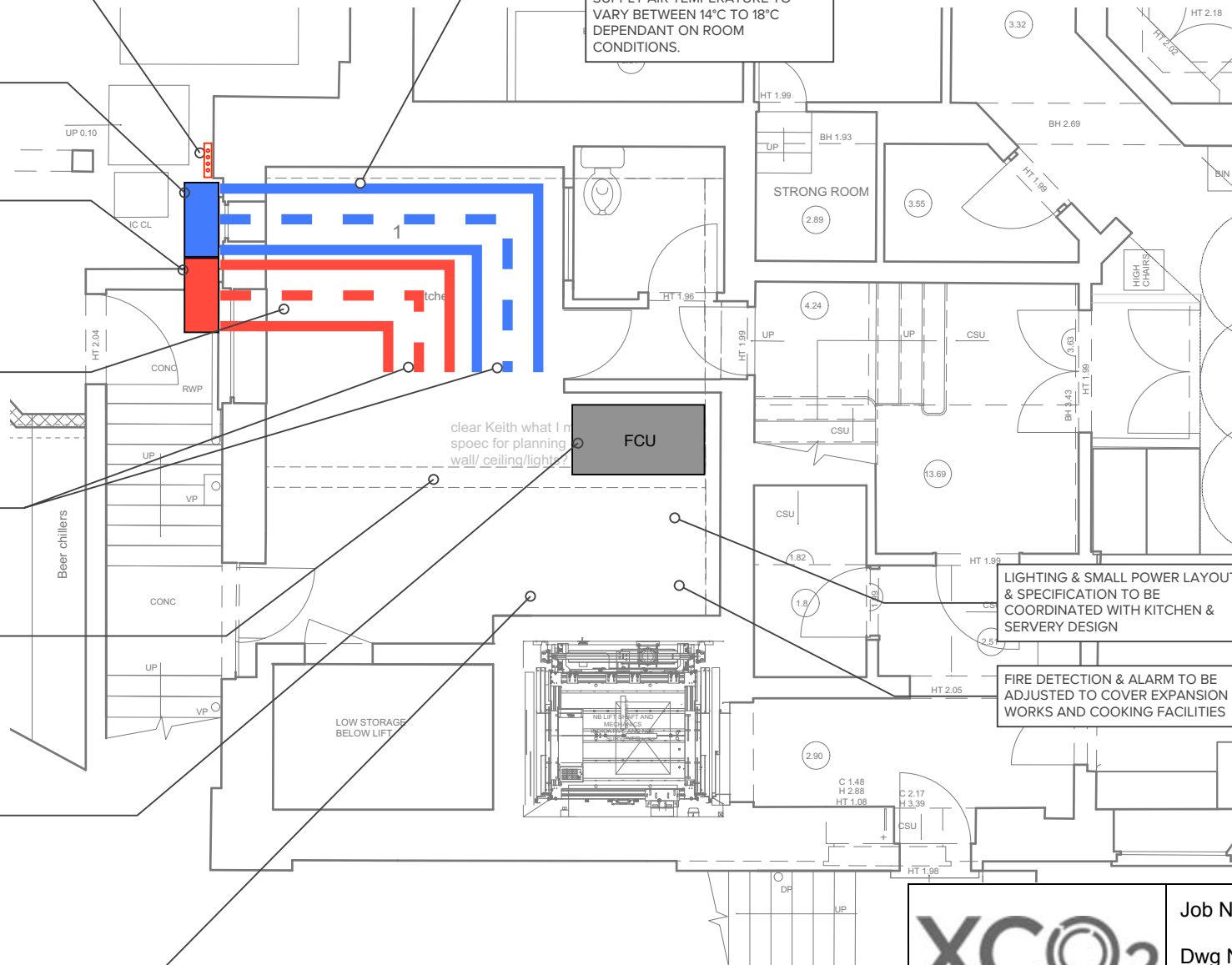
EACH UNIT WITH APPROX. DIMENSIONS (H x W x D) 245 x1550 x 800mm

LOCATION TO BE CONFIRMED BY ARCHITECT AND DISTRIBUTION BE CONFIRMED AT NEXT STAGE WITH DEVELOPED BACKGROUNDS AND KITCHEN LAYOUT

EXTRACT RATE REQUIRED BY KITCHEN APPLIANCE (1.6m<sup>3</sup>/s) TO CONNECT DIRECTLY TO APPLIANCE

HORIZONTAL VENTILATION DUCTWORK (850x400mm) FOR SUPPLY TO DROP FROM ROOFTOP AHU TO KITCHEN. PRIMARY COOLING TO BE PROVIDED VIA AHU.

SUPPLY AIR TEMPERATURE TO VARY BETWEEN 14°C TO 18°C DEPENDANT ON ROOM CONDITIONS.



#### M&E NOTES

- 1) KITCHEN ELECTRICAL LOAD OF 12kW & GAS LOAD OF 131kW. SERVERY ELECTRICAL LOAD OF 40kW. ASSUMED 20% OF CONNECTED LOAD CONVERSION TO HEAT REJECTION.
- 2) THE BUILDING'S ELECTRICITY CONNECTION TO BE UPGRADED TO 200A FROM 100A, TO ACCOMMODATE THE EXPANSION WORKS.
- 3) ELECTRICITY DISTRIBUTION BOARDS MAY NEED UPGRADE/MODIFICATIONS, AS A RESULT OF EXPANSION WORKS.
- 4) CEILING VOID DEPTH REQUIREMENTS RANGE FROM 500mm TO 800mm.
- 5) TARGET KITCHEN SET POINT TEMPERATURE OF 26°C.
- 6) ACCESS IS REQUIRED AT EVERY 3M OF THE KITCHEN EXTRACT DUCT AND AT EVERY BEND FOR CLEANING AND MAINTENANCE

Project  
Cecil Sharp House  
NW1 7AY

Drawing  
PROPOSED

XCO<sub>2</sub>

Job No 9196

Dwg No

Date 08/12/20

Job Title CECIL SHARP HOUSE

Dwg Title M&E SPATIAL - BASEMENT KITCHEN LAYOUT\_01





## 5. ACCOUSTIC ASSESSMENT

This has been submitted as a separate document

**ENVIRONMENTAL NOISE  
AND IMPACT ASSESSMENT**

Cecil Sharp House

Produced by XCO2 for Cecil Sharp House

January 2021

XCO<sub>2</sub>

## 6. CATERING DESIGNER'S PROPOSALS

We have been working with Keith Winton Design to ensure the proposals are

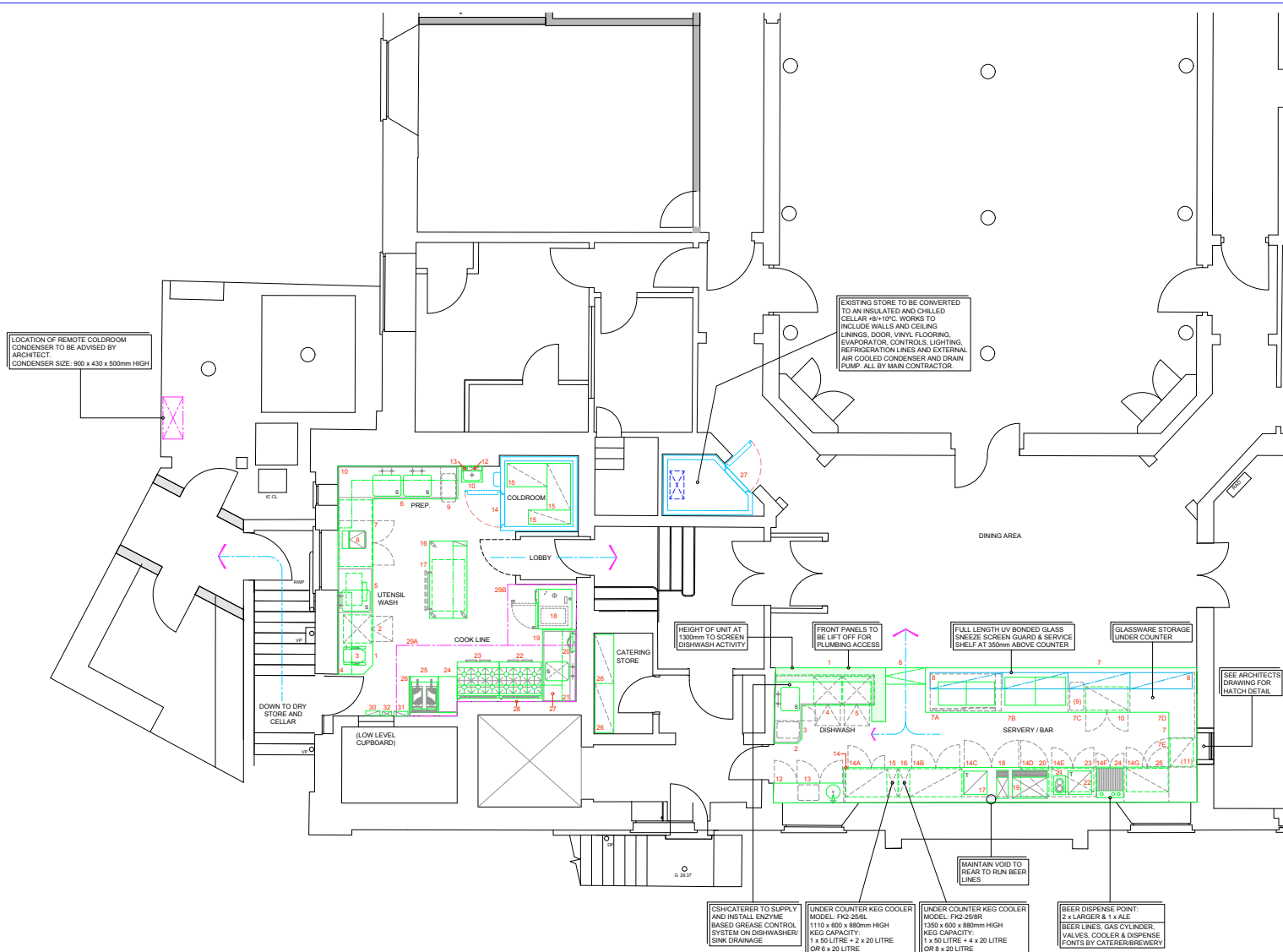


### KITCHEN - SCHEDULE OF EQUIPMENT

- 7. WORKTOP WITH UTENSIL, WARE SPARE BOWL - COVER - BASE SHELF
- 8. REFRIGERATOR WITH FREEZER AND INTEGRAL WARE SPOON HOLDER
- 9. FOOD MINDER (2L) WITH SPARE BOWL
- 10. FLOOR MOUNTED GREASE SEPARATOR AND RECOVERY UNIT
- 11. REFRIGERATOR WITH FREEZER, COVERS AND BASE SHELVING
- 12. COUNTER REFRIGERATOR (23")
- 13. MOBILE ACQUACIC MACHINE
- 14. WASTE BIN
- 15. WALL SHELVING
- 16. HAND WASH BASIN
- 17. SINK
- 18. PAPER TOWEL DISPENSER
- 19. COLLINGRATOR AND REMOTE CONTROLLER (1" + 1/4")
- 20. ADJUSTABLE REFRIG. SHELVING
- 21. REFRIGERATOR WITH FREEZER AND STAINING COUNTER WITH TWO HEATED OVERSHELVES
- 22. REFRIGERATED DRAWERS TOP SECTION DEEP FREEZE, BASE SECTION BLAST CHILL
- 23. REFRIGERATOR WITH FREEZER AND STAINING COUNTER AND SINK
- 24. WORKTOP WITH SINK BOWL
- 25. REFRIG. DISPENSER UNIT - SERVING COMBINATION OVENS
- 26. WALL SHELVING
- 27. GAS OPTIM TOP MOBILE OVEN RANGE
- 28. GAS OPTIM TOP MOBILE OVEN RANGE
- 29. WORKTOP
- 30. GAS PAN FRY DEEP FAT FRYER - MOBILE WITH BOWL, COVERS
- 31. STAINLESS STEEL SINK - 18" SQUARE
- 32. STAINLESS STEEL WALL LINING
- 33. VENTILATION CANOPY WITH UV
- 34. VENTILATION CANOPY WITH UV
- 35. GAS INTERLOCK SYSTEM - WITH INMATE PACKAGE

#### CAFE BAR AND SERVERY - SCHEDULE OF EQUIPMENT

- [illegible]



REVISION:	DETAILS:	DATE:
-----------	----------	-------

CLIENT: CECIL SHARP HOUSE

**TITLE:** PROPOSED KITCHEN LAYOUT



Keith Winton Design Ltd  
catering consultants

The Almonry  
High Street  
East Sussex  
TN33 0EA

Tel: 01424 773938

keith@keithwintondesign.com  
www.keithwintondesign.com

---

COPYRIGHT KEITH WINTON DESIGN LTD.  
THIS DRAWING AND ANY OF ITS CONTENT MUST  
NOT BE REPRODUCED, MULTIPLIED OR SUBMITTED  
TO THE INSPECTION OF ANY THIRD PARTIES  
WITHOUT OUR PRIOR PERMISSION.

DRAWN BY: MdW  
DATE: 27 May 2020  
SCALE: 1:50 @ A1  
DRAWING NUMBER: KWD.778(GA)01  
REVISION: -

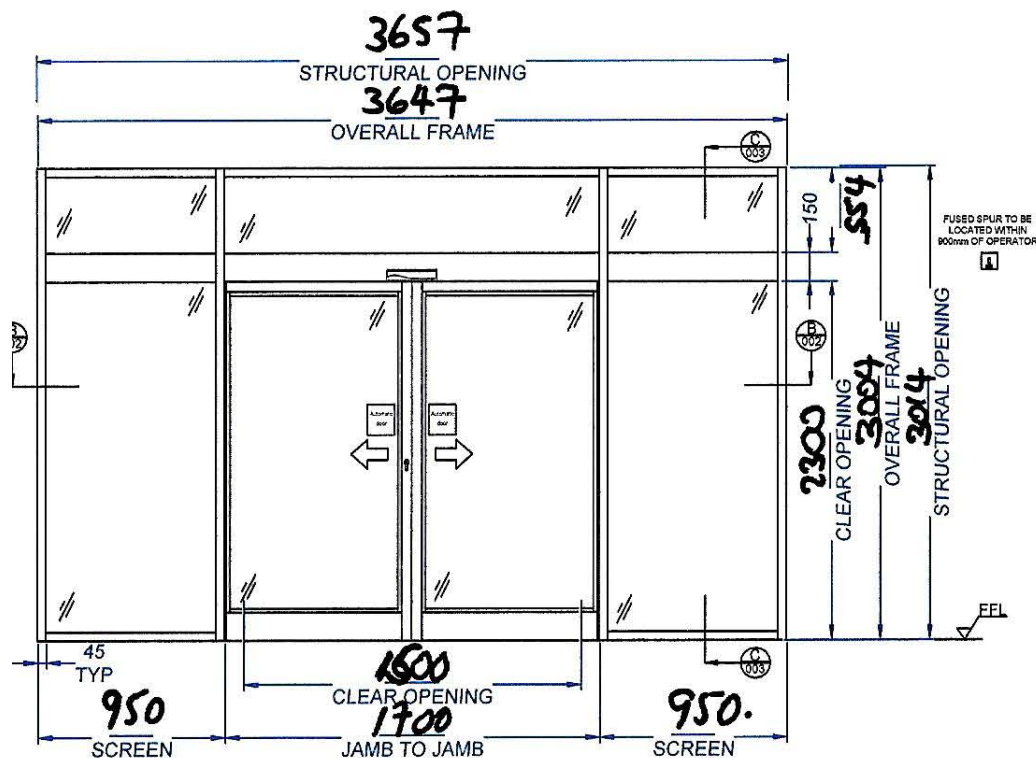
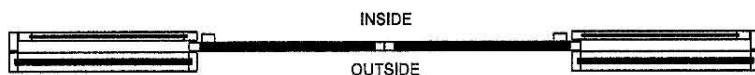
DRAWN BY: MdW  
DATE: 27 May 20

SCALE: 1:50 @ A1  
DRAWING NUMBER: KWD.778(GA)01

## 7. PROPOSED SLIDING DOOR

These are the proposed drawings for the sliding front door to replace the current swing doors which impede access

# PLAN & ELEVATION



## SCREENWORK:

FULLY FRAMED BI-PARTING SLIDING DOORS & SCREENWORK WITH FANLIGHT.

CLEAR DOUBLE GLAZED,

6.4mm LSG - 12mm AIR - 6.4mm LSG.

2 No FULLY FRAMED POCKET DOORS.

CLEAR SINGLE GLAZED 6.4mm LSG.

FINISH TO BE CONFIRMED FROM OUR STANDARD RAL COLOURS OR SATIN SILVER ANODISED.

1 No MANUAL HOOK LOCK.

1 No DOUBLE EUROPROFILE CYLINDER C/W 3 KEYS.

1 No DOUBLE RAMPED THRESHOLD.

## OPERATOR:

1 No ES200 (150) BI-PARTING OPERATOR.

2 No IXIO-DT1 ACTIVATION / SAFETY SENSORS.

1 No 5 POSITION KEY LOCKABLE REMOTE PROGRAM SWITCH, SURFACE MOUNTED WITH BACK BOX.

1 No NIGHTBANK FACILITY.

**1 Electronic lock.**

## INSTALLATION NOTES:

1. 1 No 240V 13A SWITCHED FUSED SPUR, FUSED AT 5A, POSITIONED TO THE TOP RIGHT AND WITHIN 900mm OF THE OPERATOR AND TO BE ACCESSIBLE, WHEN VIEWED ON THE OPERATOR COVER SIDE, BY OTHERS. SPUR TO BE IN PLACE AND LIVE FOR THE INSTALLATION DATE.

2. THE OPERATOR CAN BE LINKED TO THE FIRE ALARM SYSTEM TO OPEN AND STAND OPEN UPON RAISING OF THE ALARM. A N/O VOLT FREE PAIR OF CONTACTS, TO CLOSE AND HOLD UPON RAISING OF THE ALARM, WITH TAILS TERMINATING ADJACENT TO THE SPUR IS REQUIRED, BY OTHERS. THIS FEATURE IS DISABLED WHEN THE PROGRAM SWITCH IS SET TO 'OFF'. TO BE IN PLACE AND OPERATIONAL FOR THE INSTALLATION DATE.

3. UPON FAILURE OF THE MAINS SUPPLY THE DOORS WILL OPEN ON THE MONITORED INTERNAL BATTERY BACK-UP (FOR ONE CYCLE ONLY UNTIL BATTERY IS RECHARGED) AND STAND OPEN. THIS FEATURE IS DISABLED WHEN THE PROGRAM SWITCH IS SET TO 'OFF'.

4. ENTRY AND EXIT ACTIVATION BY RADAR.

5. THE PROGRAM SWITCH TO BE POSITIONED ADJACENT TO THE DOOR.

6. ALL WIRING TO EXTERNAL CONTROL DEVICES UP TO A MAXIMUM OF 2000mm AND MAINS SPUR TO A MAXIMUM OF 900mm WILL BE IN WHITE UPVC MINI TRUNKING. IF CONTAINMENT OR LONGER WIRE RUNS ARE REQUIRED (WITH DRAW WIRE) THIS WILL BE BY OTHERS.

7. STANDARD SURFACE APPLIED SIGNAGE 'AUTOMATIC DOOR' TO COMPLY WITH BS EN 16005 MUST BE FITTED TO THE DOOR LEAVES. OTHER MANIFESTATIONS ARE NOT INCLUDED IN THIS PACKAGE, AND IF REQUIRED WILL BE BY OTHERS.

8. PREPARATION OF OPENING TO BE TRUE AND SQUARE, FLOOR MUST BE LEVEL WITH ALL MAKING GOOD TO FLOOR WALL AND CEILING FINISHES TO BE BY OTHERS.

This drawing is the property of DORMA UK Limited. Copyright is reserved by them and the drawing is issued on the condition that it is not copied, reproduced, retained or disclosed to any unauthorised person, either wholly or in part without the written consent of DORMA UK Limited.

Unless otherwise stated, all dimensions are in millimetres. Please do not scale.

REV	DATE	

**dormakaba**

DORMA UK  
Wilbury Way  
Hitchin  
Hertfordshire  
SG4 0AB  
Tel: 01462 477600  
Fax: 01462 477601

CLIENT ADDRESS:

INFORMATION ONLY

PROJECT ADDRESS:

INFORMATION ONLY

English Folk Dance  
Society

DRAWING TITLE:

ES200 BI-PARTER  
FULLY FRAMED DOORS AND  
SCREENWORK WITH FANLIGHT &  
FULLY FRAMED POCKET DOORS.

DRAWN TTC	DATE: / /
SCALE: N.T.S	REV:
DRAWING NUMBER:	INFORMATION ONLY
SHEET: 1 of 3	CHECKED BY:



# HORIZONTAL SECTION 'B-B'

This drawing is the property of DORMA UK Limited.  
Copyright is reserved by them and the drawing is issued on the condition that it is not copied, reproduced, retained or disclosed to any unauthorised person, either wholly or in part without the written consent of DORMA UK Limited.

Unless otherwise stated, all dimensions are in millimetres.  
Please do not scale.

REV	DATE	

**dormakaba**

DORMA UK  
Wilbury Way  
Hitchin  
Hertfordshire  
SG4 0AB  
Tel: 01462 477600  
Fax: 01462 477601

CLIENT ADDRESS:

INFORMATION ONLY

PROJECT ADDRESS:

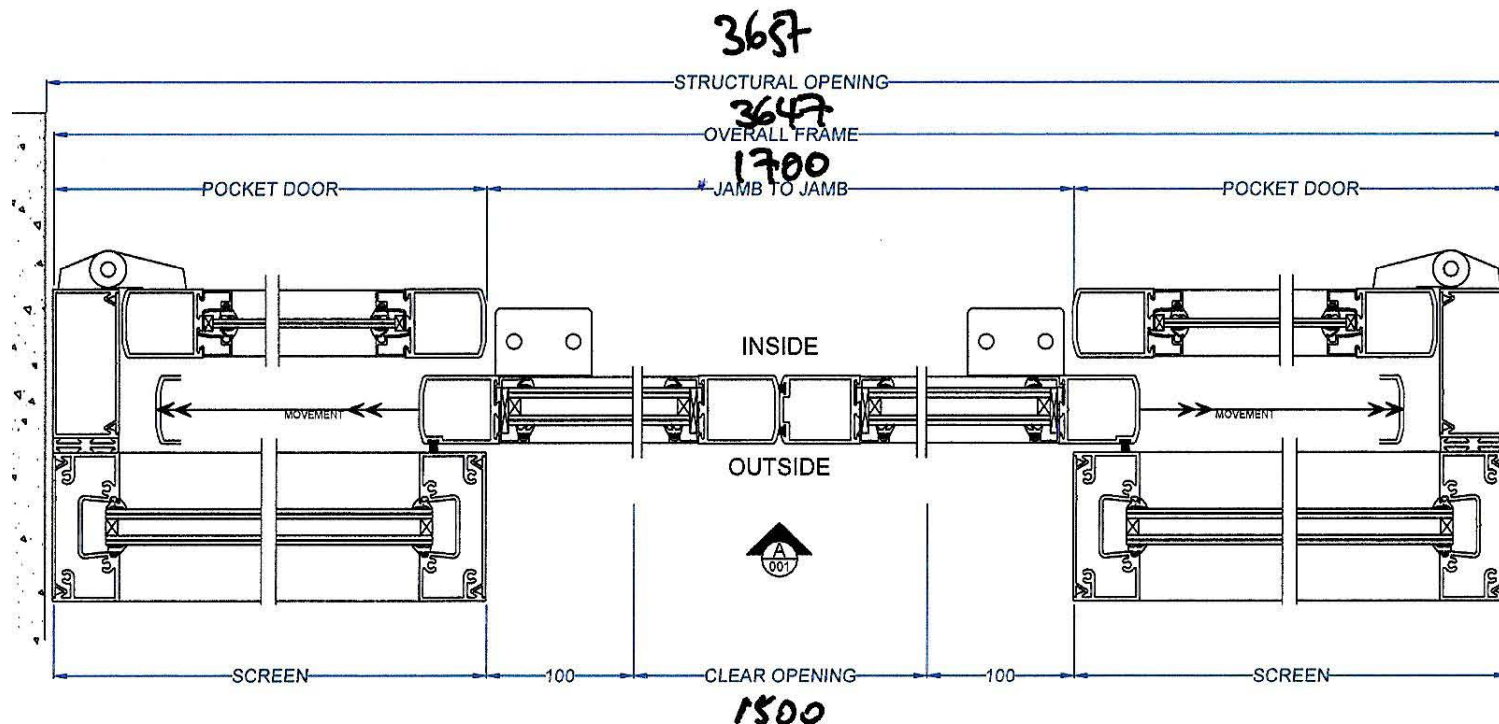
INFORMATION ONLY

*English Folk Dances  
& Song Society*

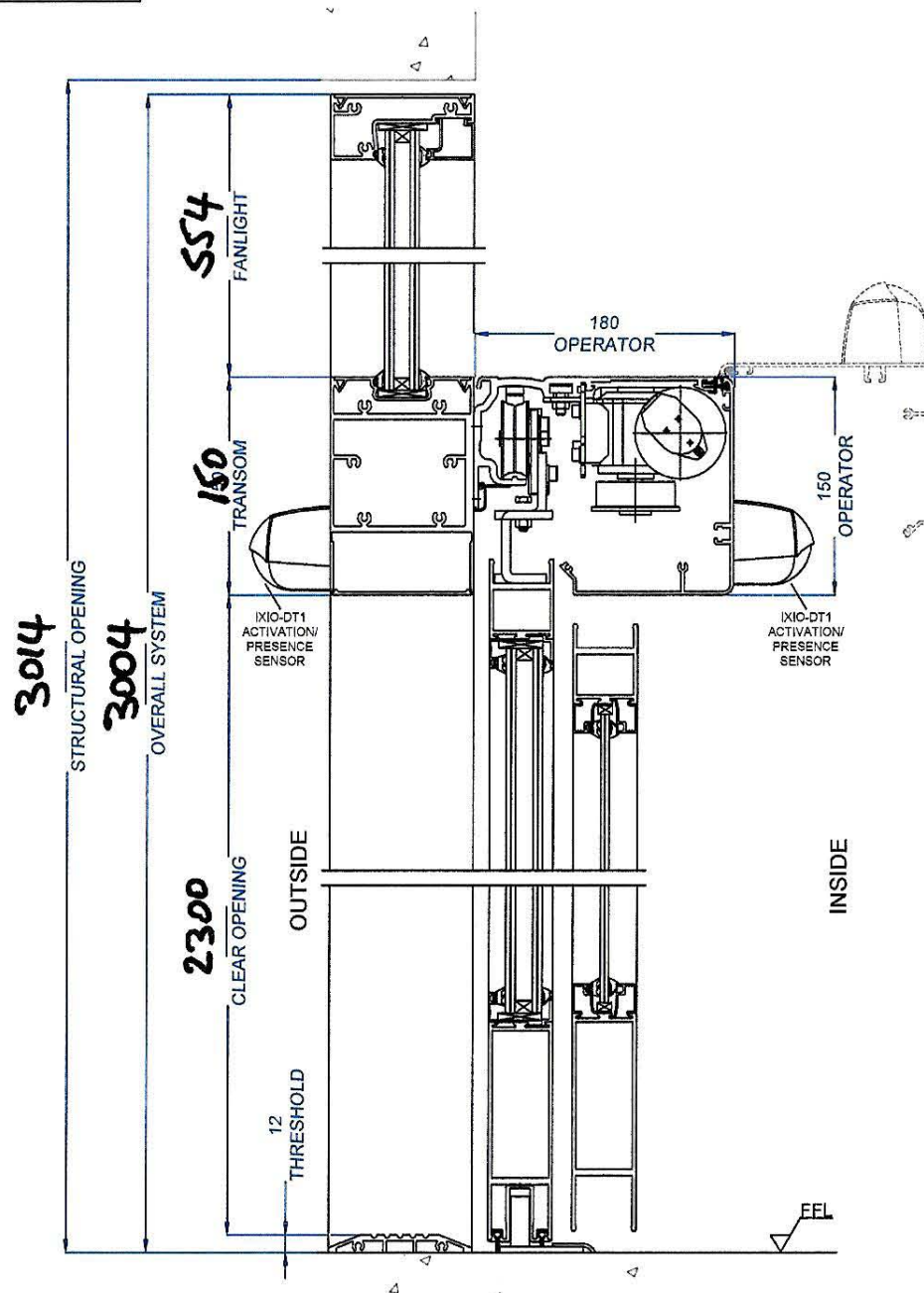
DRAWING TITLE:

ES200 BI-PARTER  
FULLY FRAMED DOORS AND  
SCREENWORK WITH FANLIGHT &  
FULLY FRAMED POCKET DOORS.

DRAWN TTC	DATE: / /
SCALE: N.T.S	REV:
DRAWING NUMBER:	
INFORMATION ONLY	
SHEET: 2 of 3	CHECKED BY:



# VERTICAL SECTION 'C-C'



This drawing is the property of DORMA UK Limited. Copyright is reserved by them and the drawing is issued on the condition that it is not copied, reproduced, retained or disclosed to any unauthorised person, either wholly or in part without the written consent of DORMA UK Limited. Unless otherwise stated, all dimensions are in millimetres. Please do not scale.

REV	DATE

**dormakaba**

DORMA UK  
Wilbury Way  
Hitchin  
Hertfordshire  
SG4 0AB  
Tel: 01462 477600  
Fax: 01462 477601

CLIENT ADDRESS:

INFORMATION ONLY

PROJECT ADDRESS:

INFORMATION ONLY  
**English Folk Dances  
& Song Society**

DRAWING TITLE:

ES200 BI-PARTER  
FULLY FRAMED DOORS AND  
SCREENWORK WITH FANLIGHT &  
FULLY FRAMED POCKET DOORS.

DRAWN TTC	DATE: / /
SCALE: N.T.S	REV:
DRAWING NUMBER: INFORMATION ONLY	
SHEET: 3 of 3	CHECKED BY:

# 8. Proposed PV Panels

Envirolec have designed the following proposal for PV panels on the South facing roof and as shown in our proposed drawings.





Office Number: 0208 090 0270

## Proposal No: 1

Date 09/12/19

FAO: Rosie Baker,  
English Folk Dance and Song Society,  
Cecil Sharp House,  
2 Regent's Park Road,  
London,  
NW1 7AY

### Re: Cecil Sharp House

Dear Rosie,

Thank you for the opportunity to price this project. Please find herein our proposal for the installation of photovoltaic module systems at the above location. Our proposal complies with the information you have provided us and meets the given design criteria.

This proposal includes all modules, inverters, DC cabling and switches, energy meter, connection to the grid, testing, and commissioning according to MIS3002. Envirolec Smart Energy Solutions is fully accredited under the Microgeneration Certification Scheme run by the BRE. All PV products included in this proposal are MCS accredited and are eligible under the Micro Generation Certification scheme for the Feed-in Tariff.

New Build Development	No	Total System Size kWp	Price ex VAT
Number Of 270W Accredited PV Modules	58	15.66kWp	
Frame and fixings			
Three Phase PV Inverter			
DC Cabling and Switch Gear			
Generation Meter			
Testing and Commissioning			
		<b>Total</b>	<b>£13,320.93</b>

Some network operators may charge a fee for completing the G59 or multi G83 network surveys. Although we include in the price for a G59 application any fees due to the DNO in respect of this are not included in this price. Please see Points 15 to 18 in Clarifications of Tender below.

This proposal is subject to sight of full plans and/or site survey. Please see following pages for tender clarification.



Envirolec Smart Energy Solutions Limited – Unit 2, Hope Lane, Eltham, London, SE9 3TP



Office Number: 0208 090 0270

## Main Exclusions:

Please note our price does not include the following:

- BCDs or MCDs
- Craneage, lifting to roof level or work face (Envirolec will liaise with site to ensure deliveries are coordinated with existing crane on site to lift direct to roof. Our price is exclusive of any supply of cranes unless stated otherwise)
- Scaffolding, "man-safe" systems or edge protection at roof level or work face
- Internal roof level access for fixing cable runs within a building where the cable entries are at a height not easily accessible from within the building – no provision has been made for access towers unless stated otherwise
- Offloading (Envirolec will take receipt of all deliveries for materials unless agreed otherwise. Our price is exclusive of the supply of any plant including forklifts or telehandlers for the offloading of materials. Envirolec will utilise delivery vehicles with tail lifts where necessary)
- Storing of panels off site
- Provision of storage on site (not required if panels delivered and lifted to roof the same day)
- Protection of equipment while being stored on site
- Protection of equipment once installed (Envirolec do not include for any protective covering for the solar modules. PV is usually the last trade on site so risk of damage is minimal. After install Envirolec request the site manager to accept that our works are left in a tidy and undamaged state before we leave site)
- Initial design fees are included in this price along with a minor revision if required following approval or confirmation of the design. Any additional re-designs following approval or confirmation will be charged at our prevailing hourly rate.

These prices are based on a continuous working period. The sum of £250 per day/worker will be charged for non-productive time due to circumstances outside our control.

This quote is subject to further due diligence and submitted on a without prejudice basis.

Please note: payment terms to be agreed before placement of an order.

I hope that this quotation meets with your approval. If you have any queries, please do not hesitate to contact us direct on 0208 090 0270.



Envirolec Smart Energy Solutions Limited – Unit 2, Hope Lane, Eltham, London, SE9 3TP

