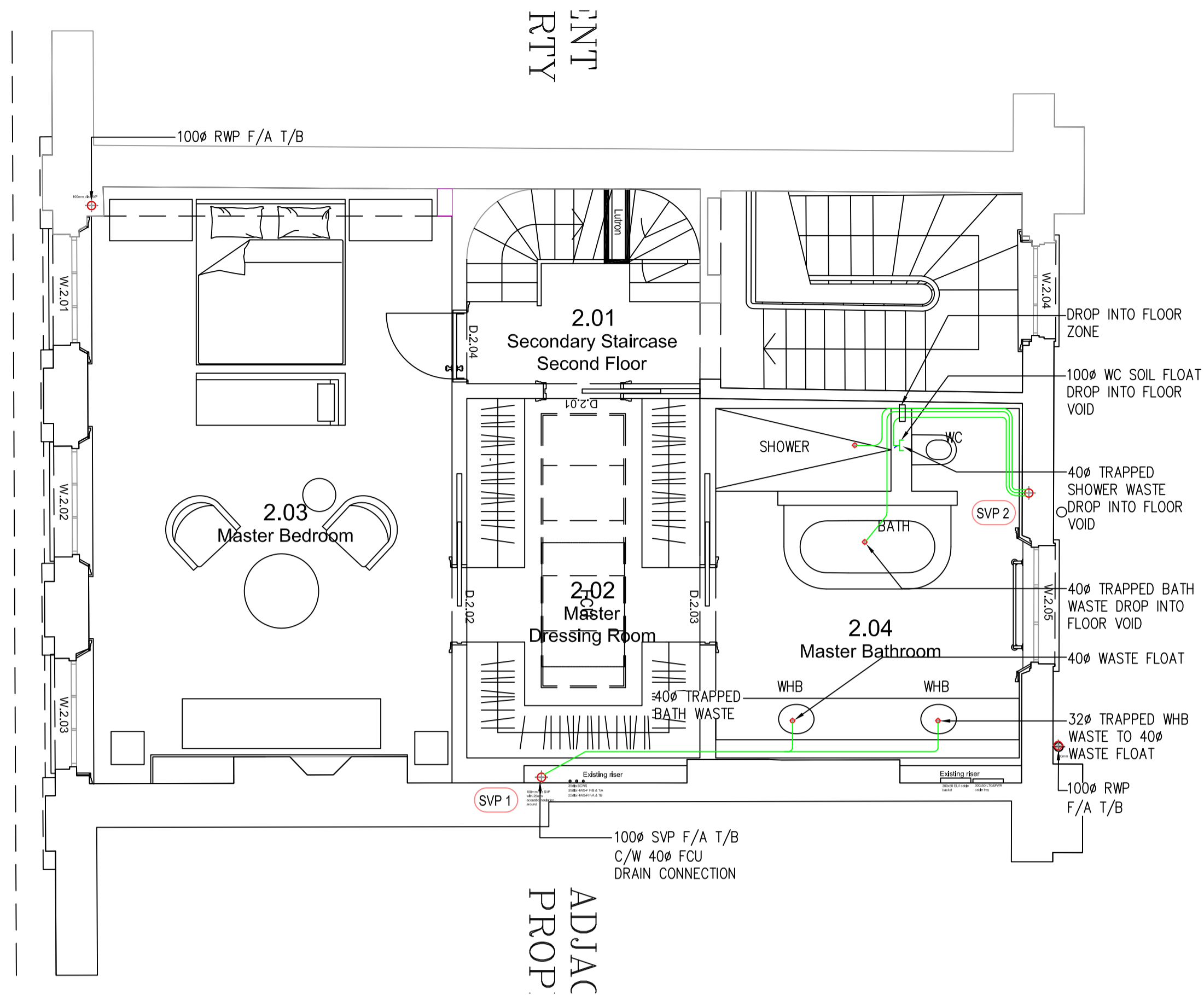


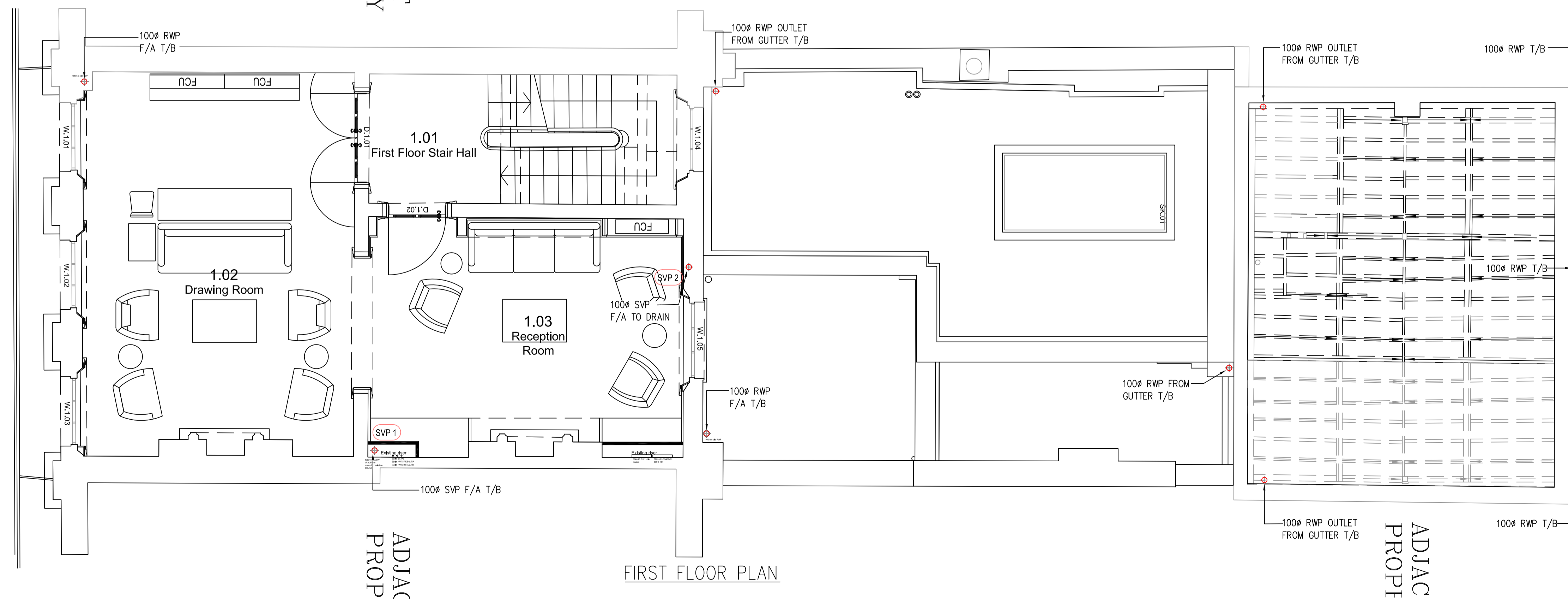
S E C U N D F L O O R



SECOND FLOOR PLAN

BWIC NOTE
 USE OF EXISTING NOTCHES AND JOISTS TO BE USED WHERE PRACTICAL. ANY NEW NOTCH AND HOLES WILL BE CARRIED OUT IN ACCORDANCE TO LISTED BUILDING REGULATIONS AND STRUCTURAL ENGINEER'S DETAILS

F I R S T F L O O R



FIRST FLOOR PLAN

NOTES

- WHB - 30# TRAPPED WASTE
- SHR - 40# TRAPPED WASTE WITH TOP RODDING ACCESS
- BATH - 40# TRAPPED WASTE
- WC - 100# SOIL PIPE
- WM - 40# TRAPPED STANDPIPE
- SINK - 40# TRAPPED WASTE
- DW - 40# TRAPPED STANDPIPE
- CYL - 40# TRAPPED STANDPIPE
- BOILER - 30# HEPVO DRY TRAPPED STANDPIPE

LEGEND

- PIPEWORK AT HIGH LEVEL
- PIPEWORK AT LOW LEVEL
- BELOW GROUND RAINAGE

- AAV - AIR ADMITTANCE VALVE
- CYL - CYLINDER
- DW - DISHWASHER
- FA - FROM ABOVE
- FCU - FAN COIL UNIT
- FG - FLOOR GULLY
- H/L - HIGH LEVEL
- L/L - LOW LEVEL
- RE - RODDING EYE
- RWO - RAIN WATER OUTLET
- RWP - RAIN WATER PIPE
- SHR - SHOWER
- SS - STUB STACK
- SVP - SOIL VENT PIPE
- T/A - TO ABOVE
- T/B - TO BELOW
- VP - VENT PIPE
- WC - WATER CLOSET
- WHB - WASH HAND BASIN
- WM - WASHING MACHINE
- WP - WASTE PIPE

Note
 ALL DIMENSIONS TO BE VERIFIED ON SITE BEFORE SETTING OUT OR MAKING ANY SHOP DRAWINGS. THIS DRAWING IS TO BE READ IN CONJUNCTION WITH THE CONSULTANT ENGINEER'S SPECIFICATION.

Orientation

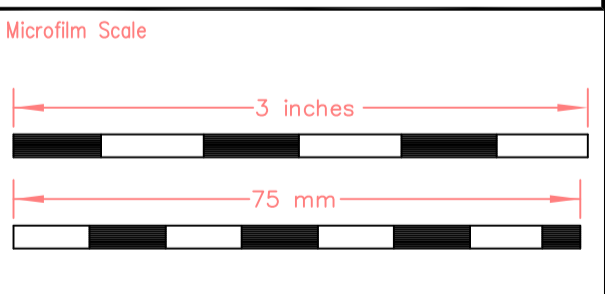
ref./date	REVISIONS
PT 23.12.20	PRE-TENDER ISSUE
PT1 03.02.21	PRE-TENDER ISSUE
T 22.02.21	TENDER ISSUE, GA'S UPDATED
T1 15.03.21	TENDER ISSUE, GA'S UPDATED

WORK STAGE 2

KUT LLP
 First Floor
 2E Berol House
 25 Ashley Road
 London
 N17 9LJ
 Tel: +44(0)20 8348 5171
 Fax: +44(0)20 8340 8926
 Email: tkp@kut.co.uk
 Web: www.kut.co.uk

DESCRIPTION
 FIRST & SECOND FLOOR
 PUBLIC HEALTH SERVICES
 ABOVE GROUND DRAINAGE
 (WORK STAGE 2)

Project
 55 CUMBERLAND TERRACE
 CAMDEN, LONDON
 NW1 4HJ



Architect
 COLLETT-ZARZYCKI Ltd
 Fernhead Studios, 2B
 Fernhead Road, London W9 3ET
 Tel: +44(0)20 8969 6967
 Email: mail@czltd.co.uk

xref	55CT - GA (21-03-03)	
Scale	A1@1:50	IC
Date	Nov 2020	Checked

Issue

TENDER			
Project No.	Services	Dwg No.	Rev.
6618	PH	WS2-102	T1

1st & 2nd