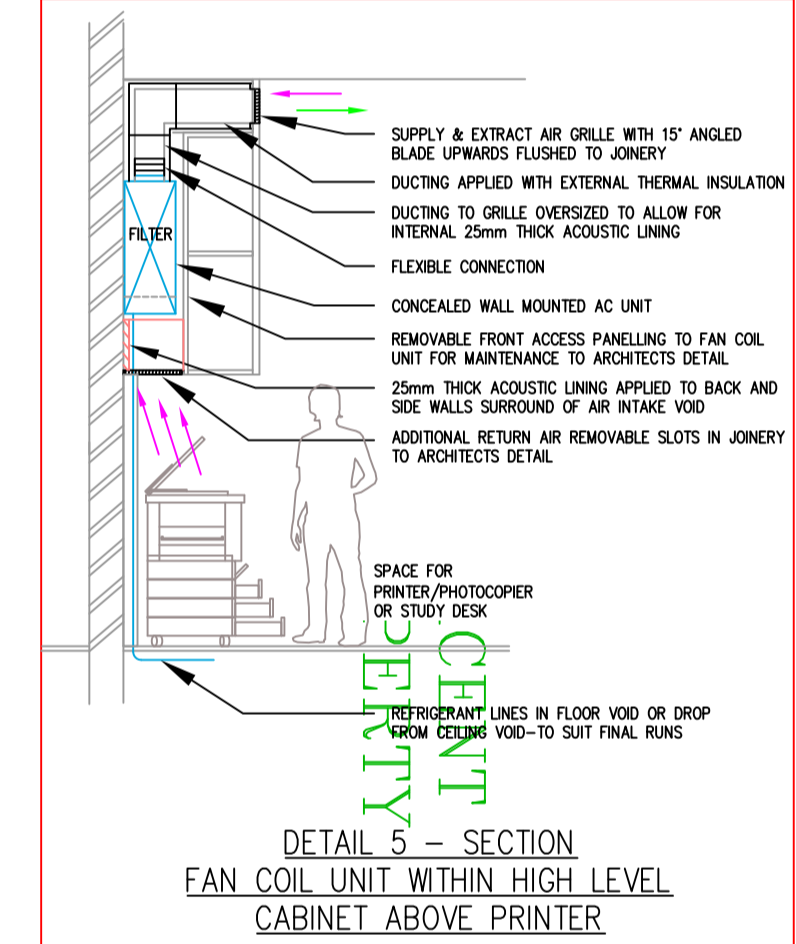
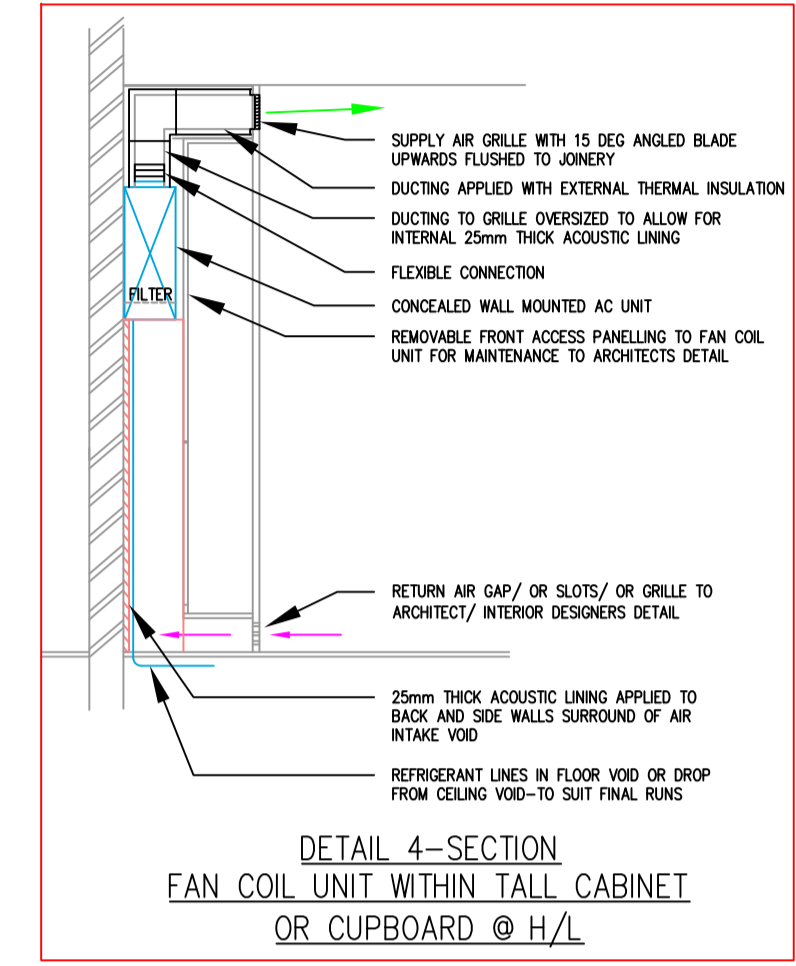
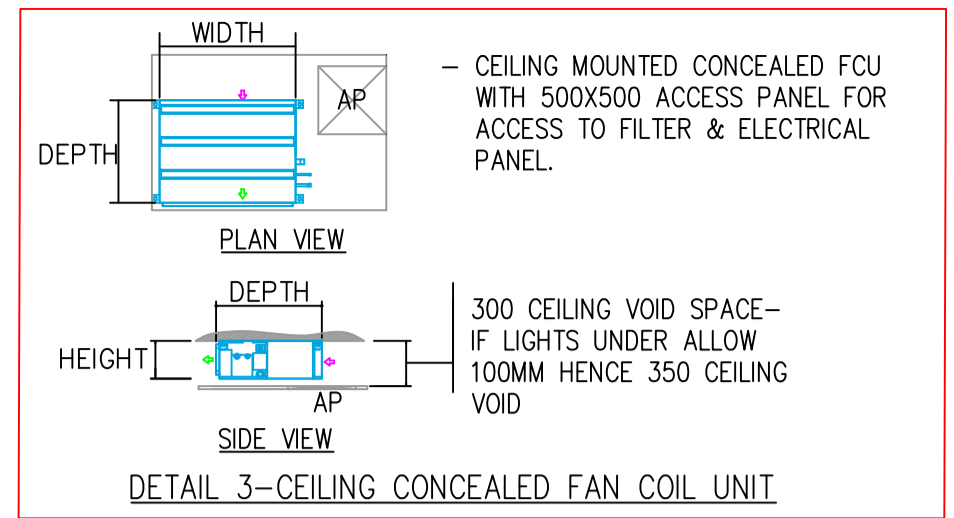
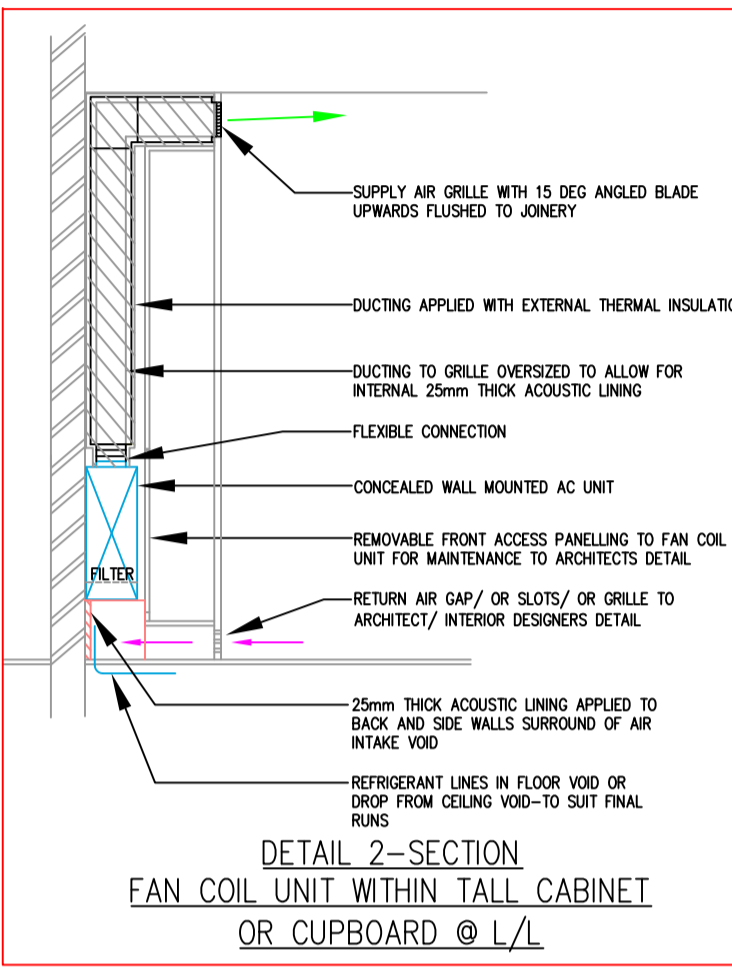
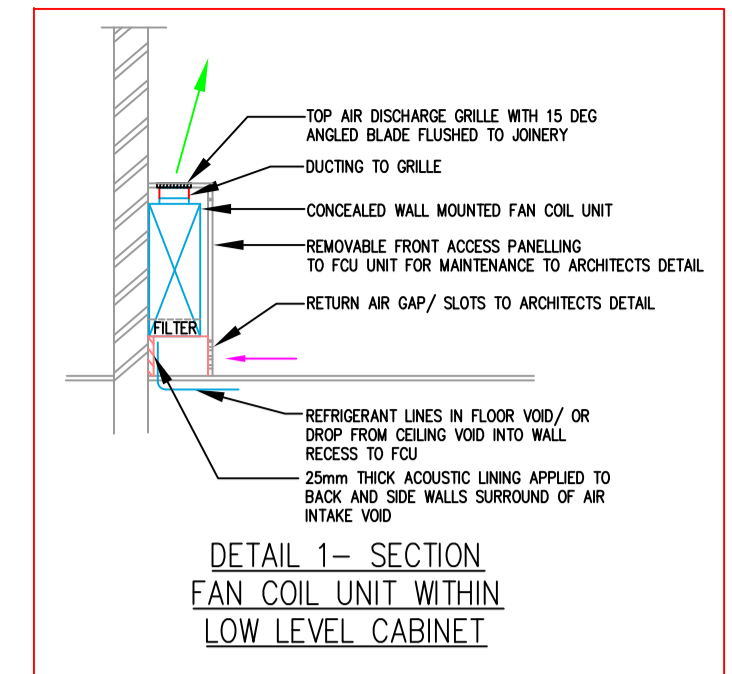


SECOND FLOOR PLAN



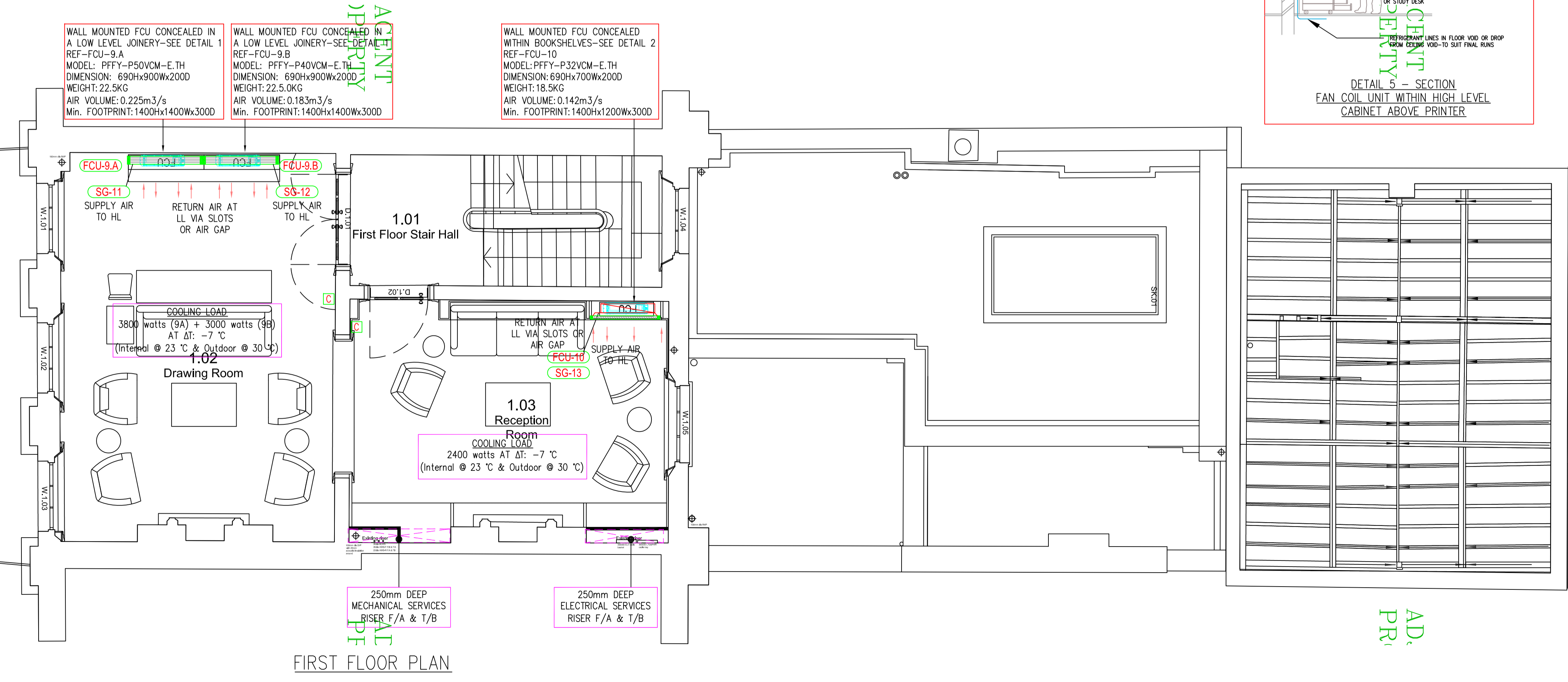
LEGEND

- CEILING MOUNTED CONCEALED FAN COIL UNIT WITH DUCTED SUPPLY TO GRILLE.
- WALL MOUNTED CONCEALED FAN COIL UNIT WITH DUCTED SUPPLY TO GRILLE.
- FCU/ GRILLE PLENUM BOX THERMALLY INSULATED WITH ACOUSTIC INTERNALLY LINING. ALL SIDE WALL GRILLES TO BE PROVIDED WITH AIR DEFLECTORS COLOUR BLACK.
- FCU'S AC GRILLES BASED ON HIGH END RESIDENTIAL PLASTER IN TYPE AND FLANGELESS JOINERY GRILLE WITH REMOVABLE CORE, SUPPLIED COMPLETE WITH ACOUSTIC LINED SUPPLY PLENUM BOX WITH AIR FLOW DIRECTION BLADES. WHERE GRILLE IS USED FOR AIR SUPPLY AND RETURN, THE RETURN AIR GRILLE AREA SHALL BE PROVIDED WITH NON VISION PLATE BEHIND COLOUR BLACK TO PREVENT ANY LIGHT COMING THROUGH.
- DUCTING TO FCU'S TO BE SEMI RIGID ACOUSTIC/ THERMALLY INSULATED 25mm
- 204x60 OR 220x90 FLAT PVC DUCTING
- FB — FB—FIRE BRAKE 2 HR AS SUPPLIED BY DOMUS OR EQUAL & APPROVED. TO BE PROVIDED WHERE PASSING THROUGH FIRE RATED WALLS & FLOORS.
- REFRIGERANT LINES AT HL
- WALL MOUNTED FAN COIL UNIT CONTROLLER. EXACT LOCATION TO BE AGREED WITH ARCHITECT/ INTERIOR DESIGNER
- FCU 1 — FAN COIL UNIT REFERENCE—REFER TO MODEL INDICATED ON DRAWING
- SG-1 — SUPPLY / RETURN AIR GRILLE AND LOUVER REFERENCES
- EG-1
- L1

- NOTES**
- ALL CONDENSATE DRAINS TO BE INSTALLED WITH GRAVITY FALL AND CONNECTED TO SVP VIA HEVVO WATERLESS TRAP. ALL CONDENSATES TO BE TESTED FOR OPERATION AND WITNESSED BY THE MAIN CONTRACTOR. WHERE GRAVITY CONDENSATE IS NOT POSSIBLE PROVIDE CONDENSATE PUMP WITH DISCHARGE LINE.
 - DRAIN ENDS TO BE CAPPED DURING INSTALLATION WORKS. THE MAIN CONTRACTOR SHALL ENSURE THIS IS CARRIED OUT.
 - CONDENSATE DRAINS & REFRIGERANT PIPES TO BE COORDINATED WITH OTHER SERVICES PRIOR TO INSTALLATION.
 - ALL EQUIPMENT SHALL BE COVERED AND PROTECTED FROM DUST & DEBRIS
 - ALL GRILLES AND PLENUM BOXES TO BE AS SUPPLIED BY JPR SERVICES OR EQUAL.

BWIC NOTE

USE OF EXISTING NOTCHES AND JOISTS TO BE USED WHERE PRACTICAL. ANY NEW NOTCH AND HOLES WILL BE CARRIED OUT IN ACCORDANCE TO LISTED BUILDING REGULATIONS AND STRUCTURAL ENGINEER'S DETAILS. CONTRACTOR TO PROVIDE SERVICES TRENCH BETWEEN VAULTS AND MAIN HOUSE AND SHOULD REFER TO ARCHITECT'S DRAWINGS, DETAILS & SPECIFICATIONS TO ENSURE PROTECTED FLOOR AREA/S ARE CAREFULLY REMOVED & REINSTATED TO ORIGINAL.



FIRST FLOOR PLAN

Note
 ALL DIMENSIONS TO BE VERIFIED ON SITE BEFORE SETTING OUT OR MAKING ANY SHOP DRAWINGS. THIS DRAWING IS TO BE READ IN CONJUNCTION WITH THE CONSULTANT ENGINEER'S SPECIFICATION.

Orientation

ref./date	REVISIONS
PT 23.12.20	PRE-TENDER ISSUE
PT1 03.02.21	PRE-TENDER ISSUE
T 22.02.21	TENDER ISSUE, GA'S UPDATED
T1 15.03.21	TENDER ISSUE, GA'S UPDATED

WORK STAGE 2

KUT
 KUT LLP
 First Floor
 2E Berol House
 25 Ashley Road
 London
 N17 9LJ
 Tel: +44(0)20 8348 5171
 fax: +44(0)20 8340 8926
 email: tkp@kut.co.uk
 web: www.kut.co.uk

DESCRIPTION
FIRST & SECOND FLOOR MECHANICAL SERVICES COMFORT COOLING

Project
55 CUMBERLAND TERRACE CAMDEN, LONDON NW1 4HJ

Microfilm Scale
 3 inches
 75 mm

Architect
COLLETT-ZARZYCKI Ltd
 Fernhead Studios, 2B
 Fernhead Road, London W9 3ET
 Tel: +44(0)20 8969 6967
 email: mail@czltd.co.uk

ref 55CT - GA (21-03-03)

Scale A1@1:50 Drawn SAS
 Date Nov 2020 Checked

Issue
TENDER

Project No.	Services	Dwg No.	Rev.
6618	M	WS2-107	T1

1st & 2nd