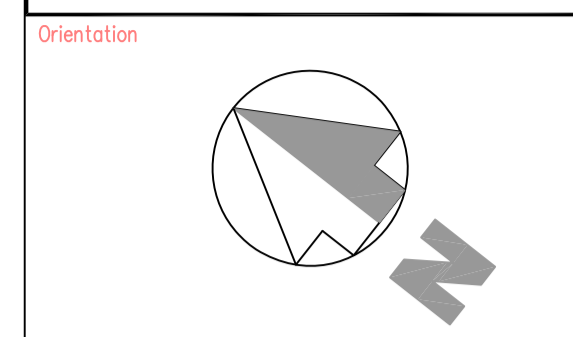


Note
ALL DIMENSIONS TO BE VERIFIED ON SITE BEFORE SETTING OUT OR MAKING ANY SHOP DRAWINGS. THIS DRAWING IS TO BE READ IN CONJUNCTION WITH THE CONSULTANT ENGINEER'S SPECIFICATION.



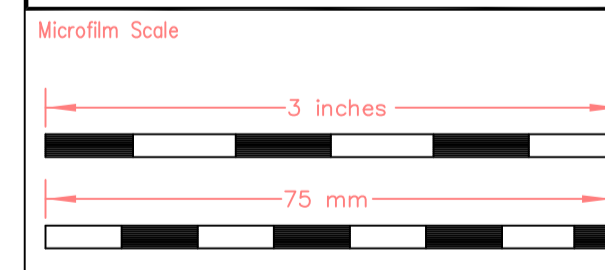
ref./date	REVISIONS
PT 29.01.21	PRE-TENDER ISSUE
T 22.02.21	TENDER ISSUE
T1 15.03.21	TENDER ISSUE, GA'S UPDATED

WORK STAGE 2

KUT
KUT LLP
First Floor
2E Berol House
25 Ashley Road
London
N17 9LJ
Tel: +44(0)20 8348 5171
Fax: +44(0)20 8340 8926
Email: ktp@kut.co.uk
Web: www.kut.co.uk

Description
FIRST, SECOND AND THIRD FLOOR ELECTRICAL SERVICES LIGHTING & POWER

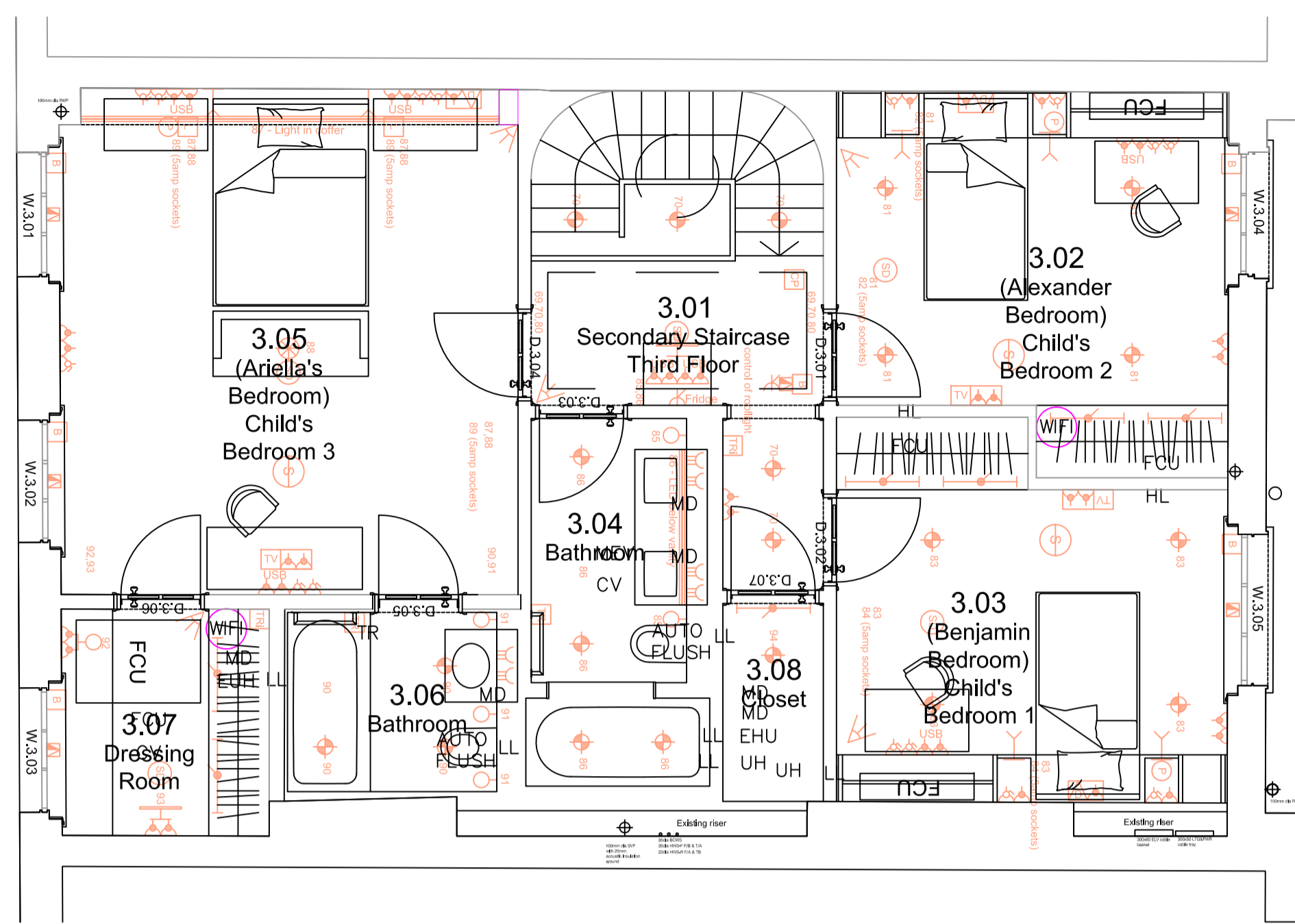
Project
**55 CUMBERLAND TERRACE
CAMDEN, LONDON
NW1 4HJ**



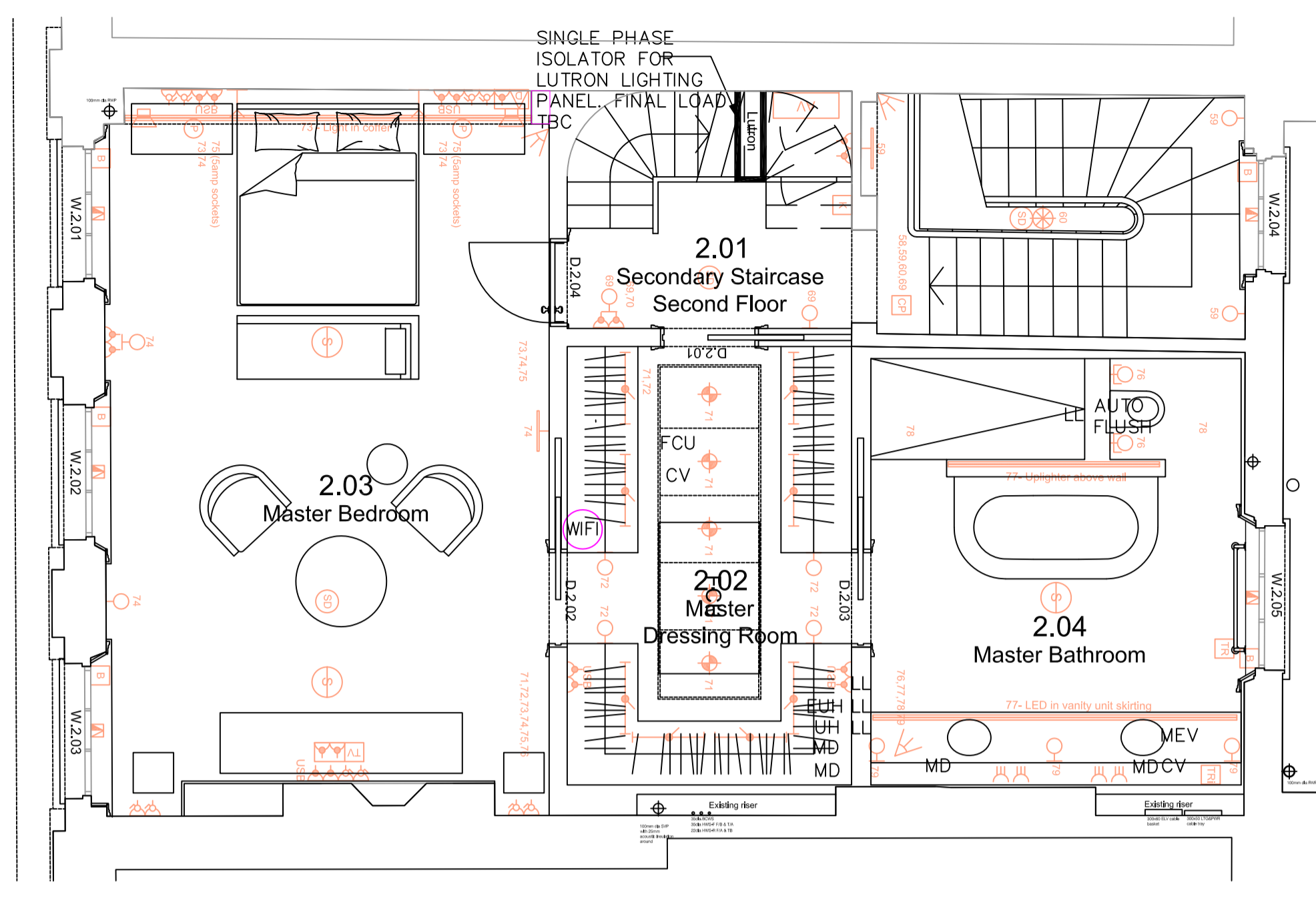
Architect
COLLETT-ZARZYCKI Ltd
Fernhead Studios, 2B
Fernhead Road, London W9 3ET
Tel: +44(0)20 8969 6967
email: mail@czltd.co.uk

Scale A1@1:50
Date Dec 2020
Issue TENDER

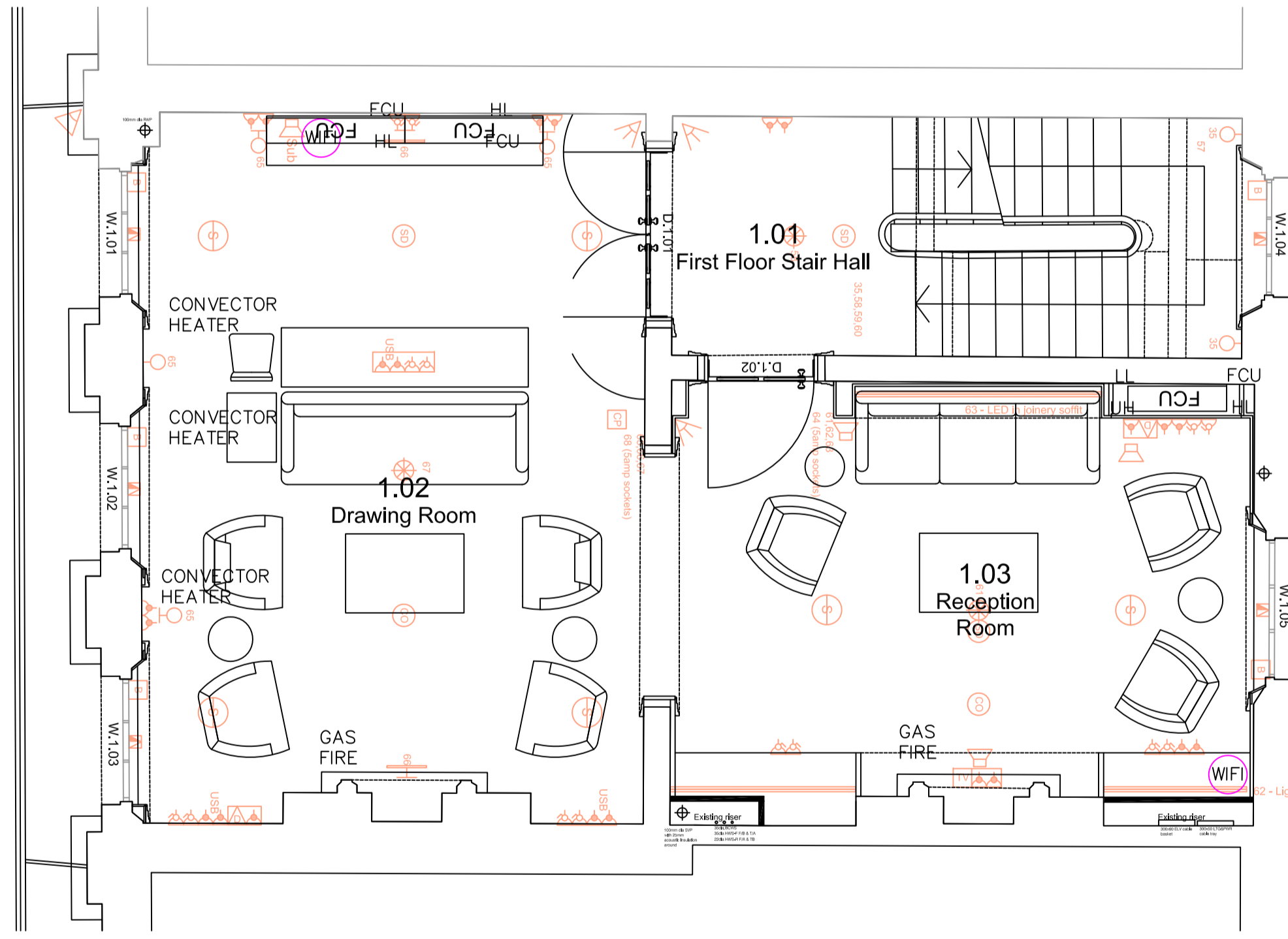
Project No.	Services	Dwg No.	Rev.
6618	E	WS2-202	T1



THIRD FLOOR PLAN



SECOND FLOOR PLAN



FIRST FLOOR PLAN

ELECTRICAL KEY			
	Invisible audio speaker in ceiling as per AV consultant		Mains supply smoke detector
	Supply for pendant fitting (Pattress)		Mains supplied heat detector
	Recessed LED spotlight (IP65 rated in wet areas)		Mains supply CO2 detector
	Recessed IP65 LED spotlight in bathroom extract		Single 5amp socket
	Wall lamp		Single 13amp socket
	Wall lamp lower level		Double 5amp socket
	Reading light with switch		Single 13amp floor socket
	External wall lamp		Double 13amp socket with integral USB charger
	Bulkhead fitting		External socket with remote switch
	Fibre optics bespoke arched lighting system		Oven socket with remote switch
	LED tape light		Appliance socket with remote switch
	Picture light		Shaver socket
	LED tape light with door switch on PIR		Room thermostat
	Light Switch		Electrical heated towel rail
	Distribution Board		Towel rail isolator
	Cat6/RJ45 socket (Data point) as per AV consultant		TV/Sat socket as per AV consultant
	Speaker as per AV consultant		Subwoofer as per AV consultant
	Control Panel house system (Integral entry phone system)		AV cupboard
	Entry phone - external handset		Alarm connectors on external doors by specialist
	Viper connectors on external fenestrations by specialist		PIR sensor connected to alarm system by specialist
	Alarm sounder by specialist		Alarm keypad by specialist
	Door bell		Window Treatment (two cables, blinds and curtains)
	Panic Button		

LEGEND		ABBREVIATION	
	Distribution Board	GS1	GRID SWITCH TO CONTROL:
	Flexible connection unit	TR	TOWEL RAIL
	Fused Connection Unit	UH	WET UNDERFLOOR HEATING MANIFOLD
	Single Phase Isolator	MVHR	MECHANICAL VENT HEAT RECOVERY
	3 Phase Isolator	HL	HIGH LEVEL
	GRID SWITCH TO CONTROL: TUMBLE DRYER, WASHING MACHINE, FRIDGE, FRIDGE/FREEZER, MICROWAVE	CV	CEILING VOID
	12W SURFACE MOUNTED LED LUMINAIRE	LL	LOW LEVEL
	ANTI-FROST ELECTRIC PANEL HEATER	MD	MIRROR DEMISTER
		EUH	ELECTRIC HEATING MANIFOLD
		MEV	MECHANICAL VENT HEAT RECOVERY
		WIFI	WIRELESS ACCESS POINT

- NOTES
- THIS DRAWING SHALL BE READ IN CONJUNCTION WITH MECHANICAL, STRUCTURAL AND ARCHITECTURAL DRAWINGS FOR FULL COORDINATION.
 - REFER TO DISTRIBUTION BOARD SCHEDULE IN THE SPECIFICATION FOR DETAILED CIRCUIT INFORMATION.
 - POWER SUPPLY LOCATIONS ARE INDICATIVE ONLY FOR ALL MECHANICAL EQUIPMENT. REFER TO MECHANICAL DRAWING FOR EXACT POSITION OF EQUIPMENT.
 - UN-SWITCHED FUSED CONNECTION UNIT FOR INTRUDER ALARM, LOCATION IS INDICATIVE ONLY, TO BE INSTALLED AT FINAL POSITION OF INTRUDER ALARM PANEL.
 - THE VIRGIN MEDIA INTAKE POSITION IS INDICATIVE ONLY. FINAL LOCATION TO BE AGREED ON SITE.
 - THE ELECTRICAL CONTRACTOR SHALL PROVIDE FUSED CONNECTION UNITS FOR ALL LIGHTING WITHIN FIXED JOINERY

1st, 2nd & 3rd