

## 28 Avenue Road Method Statement:

### Trial pit excavation within RPA

- i. It is recommended the LPA be notified of intended works in view of Conservation Area /TPO designation. A formal 6-week application should not be required, just notification of intent and ideally an email (consensual) response from the council. Note: any excavations should be carried out with the health of the trees in mind, due to their protected status.
- ii. Location of trenches to correspond with red lines on LT sketches below.
- iii. Trial trenches to be of minimum 1.5m length, 1m depth and minimal width for ease of dig. Neither roots >25mm in diameter or thick mats of finer roots should be damaged in these operations. Where there is any uncertainty, the contractor should liaise with Landmark Trees (LT), ideally through use of mobile phone photographs and site visits as necessary.
- iv. Decking, paving and sub-base can be removed by manual (power) tools only. Soil to be loosened by airspade, and / or carefully removed by hand spade, and through careful working by operatives briefed on this statement, with clear understanding of English, the brief and requisite precautions. Contractor or supervising agent must have access to mobile phone with photo-relay facility. Plant and operatives to keep off soft landscape / keep to paving or boarded ground protection (in case of e.g. flowerbed).

---

**Web:** [www.landmarktrees.co.uk](http://www.landmarktrees.co.uk)  
**e-mail:** [info@landmarktrees.co.uk](mailto:info@landmarktrees.co.uk)  
**Tel:** 0207 851 4544

**London Office:** Holden House, 4th Floor, 57 Rathbone Place London W1T 1JU

**Registered Office:** 15 Abbey Road, Oxford OX2 0AD

Landmark Trees is the trading name of Landmark trees Ltd. Registered in Wales. Reg No. 3882076



- v. Trench to be left open for LPA inspection (as necessary), following photographing (and consultant inspection of any potentially significant roots). Roots exposed by such operations larger than 25mm diameter should be wrapped in damp, clean hessian sacking to prevent desiccation and exposure to extreme temperature fluctuations.
- vi. Before backfilling (after LPA inspection), any hessian wrapping should be removed and any preserved roots, surrounded with loose granular fill, before the remaining fill is added. The material should be free from contaminants injurious to plant health.

**Adam Hollis**

**Landmark Trees**

**15<sup>th</sup> January 2021**

**enc. Trial Pit Location Sketches**

---

**Web:** [www.landmarktrees.co.uk](http://www.landmarktrees.co.uk)

**e-mail:** [info@landmarktrees.co.uk](mailto:info@landmarktrees.co.uk)

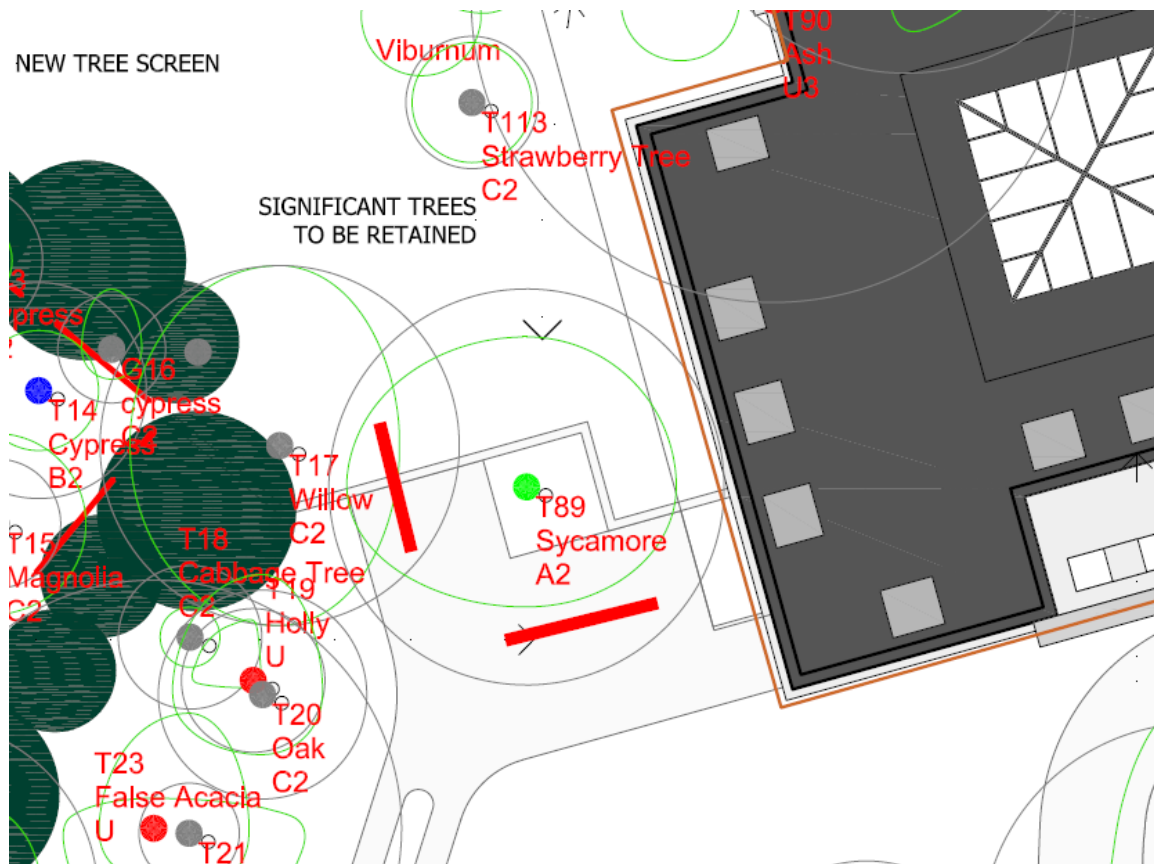
**Tel:** 0207 851 4544

**London Office:** Holden House, 4th Floor, 57 Rathbone Place London W1T 1JU

**Registered Office:** 15 Abbey Road, Oxford OX2 0AD

Landmark Trees is the trading name of Landmark trees Ltd. Registered in Wales. Reg No. 3882076





**Trial Pit Location Sketch 1**

**Web:** [www.landmarktrees.co.uk](http://www.landmarktrees.co.uk)  
**e-mail:** [info@landmarktrees.co.uk](mailto:info@landmarktrees.co.uk)  
**Tel:** 0207 851 4544

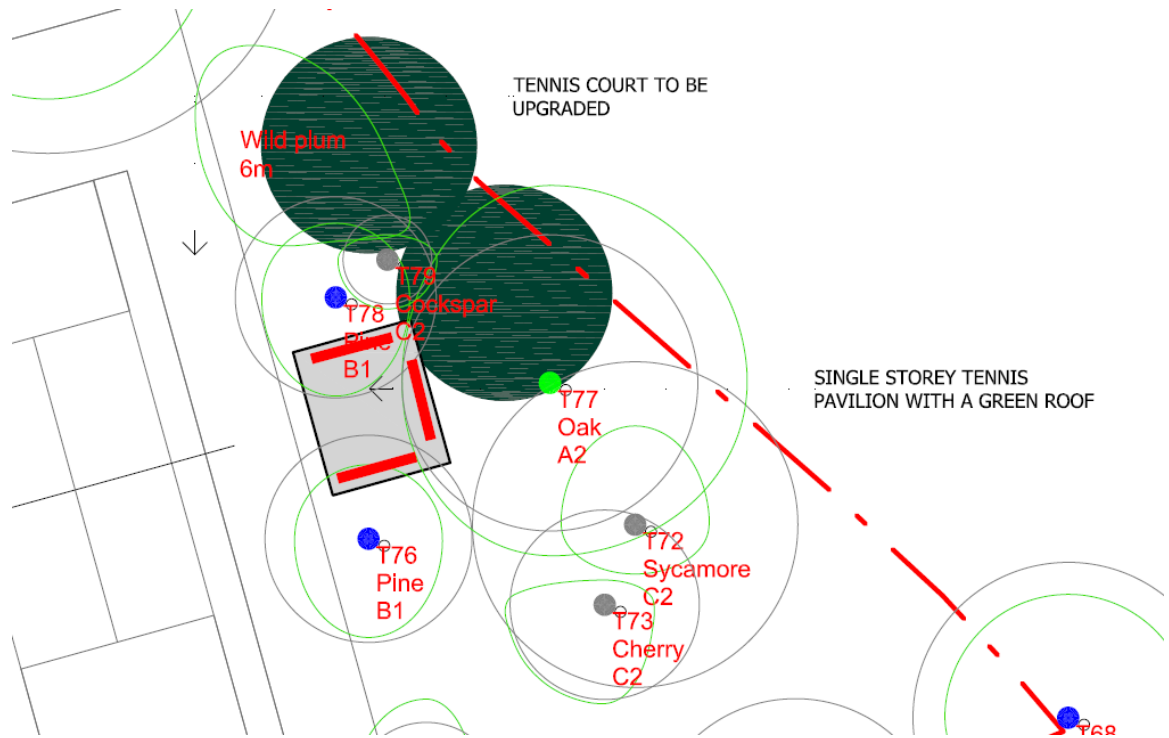


**London Office:** Holden House, 4th Floor, 57 Rathbone Place London W1T 1JU

**Registered Office:** 15 Abbey Road, Oxford OX2 0AD

Landmark Trees is the trading name of Landmark trees Ltd. Registered in Wales. Reg No. 3882076





**Trial Pit Location Sketch 2**

**Web:** [www.landmarktrees.co.uk](http://www.landmarktrees.co.uk)  
**e-mail:** [info@landmarktrees.co.uk](mailto:info@landmarktrees.co.uk)  
**Tel:** 0207 851 4544

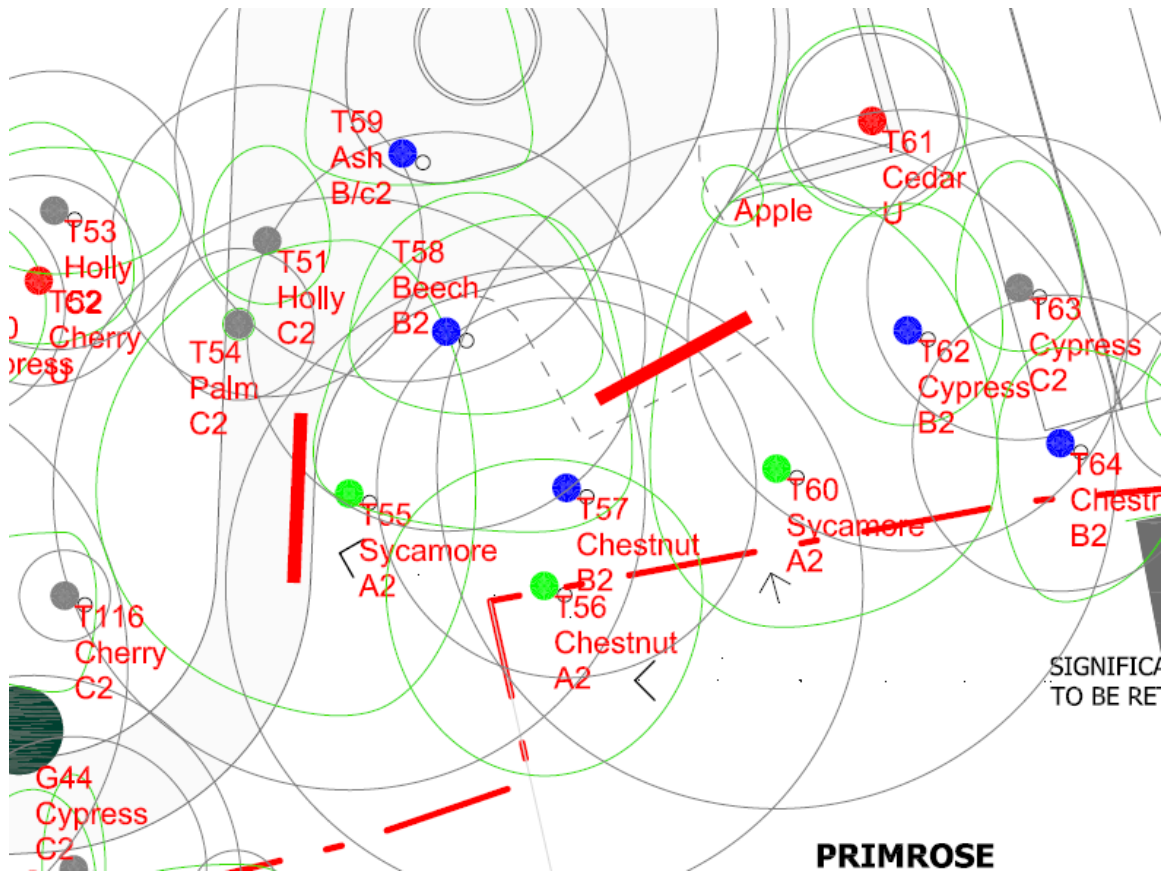


**London Office:** Holden House, 4th Floor, 57 Rathbone Place London W1T 1JU

**Registered Office:** 15 Abbey Road, Oxford OX2 0AD

Landmark Trees is the trading name of Landmark trees Ltd. Registered in Wales. Reg No. 3882076





**Trial Pit Location Sketch 3**

**Web:** [www.landmarktrees.co.uk](http://www.landmarktrees.co.uk)  
**e-mail:** [info@landmarktrees.co.uk](mailto:info@landmarktrees.co.uk)  
**Tel:** 0207 851 4544



**London Office:** Holden House, 4th Floor, 57 Rathbone Place London W1T 1JU

**Registered Office:** 15 Abbey Road, Oxford OX2 0AD

Landmark Trees is the trading name of Landmark trees Ltd. Registered in Wales. Reg No. 3882076

