

PLANNING REF 2016/6366/P

CONDITION 4 - REQUESTED WINDOW DETAILS

KEY



REFER TO TIMBER SASH WINDOW TYPE 1 & 2
DETAILS ON HA LTD DRAWING A141



REFER TO TIMBER SASH WINDOW TYPE 8 ON HA LTD
DRAWING A141



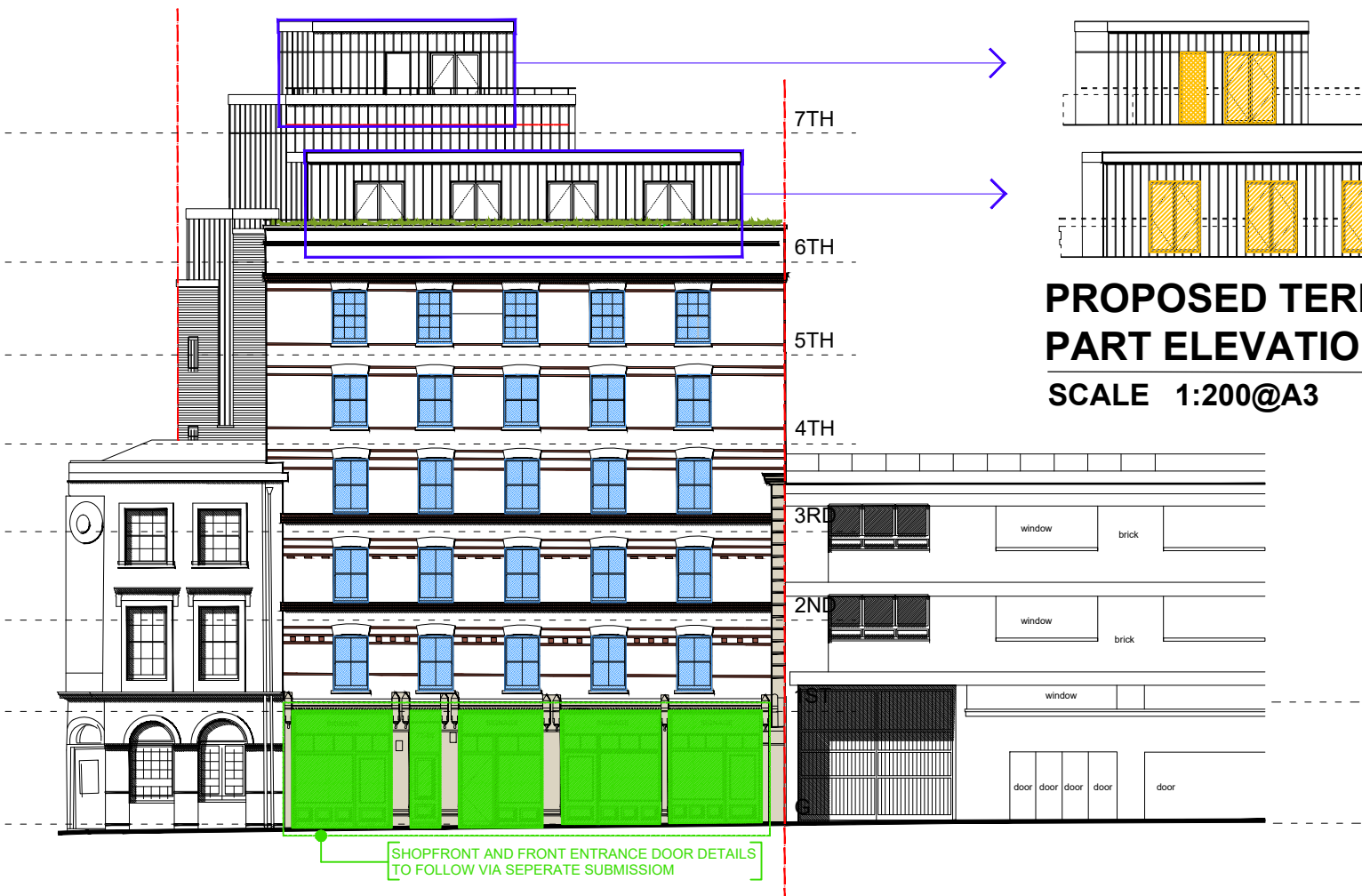
SHOPFRONT DETAILS (TO FOLLOW)



ALUMINIUM DOOR DETAILS
(TO FOLLOW)



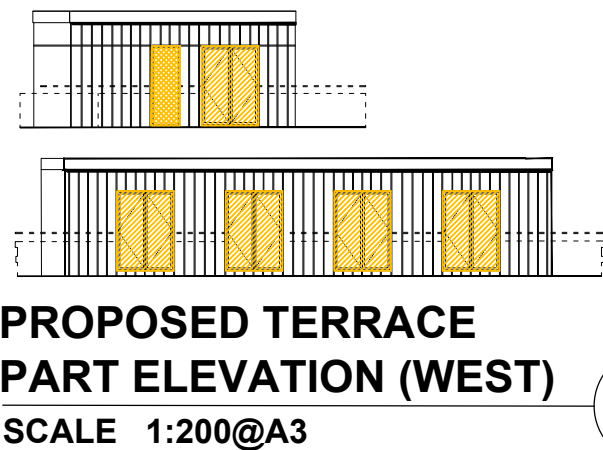
ALUMINIUM FIXED WINDOW DETAILS
(TO FOLLOW)



PROPOSED FRONT ELEVATION (WEST)

SCALE 1:200@A3

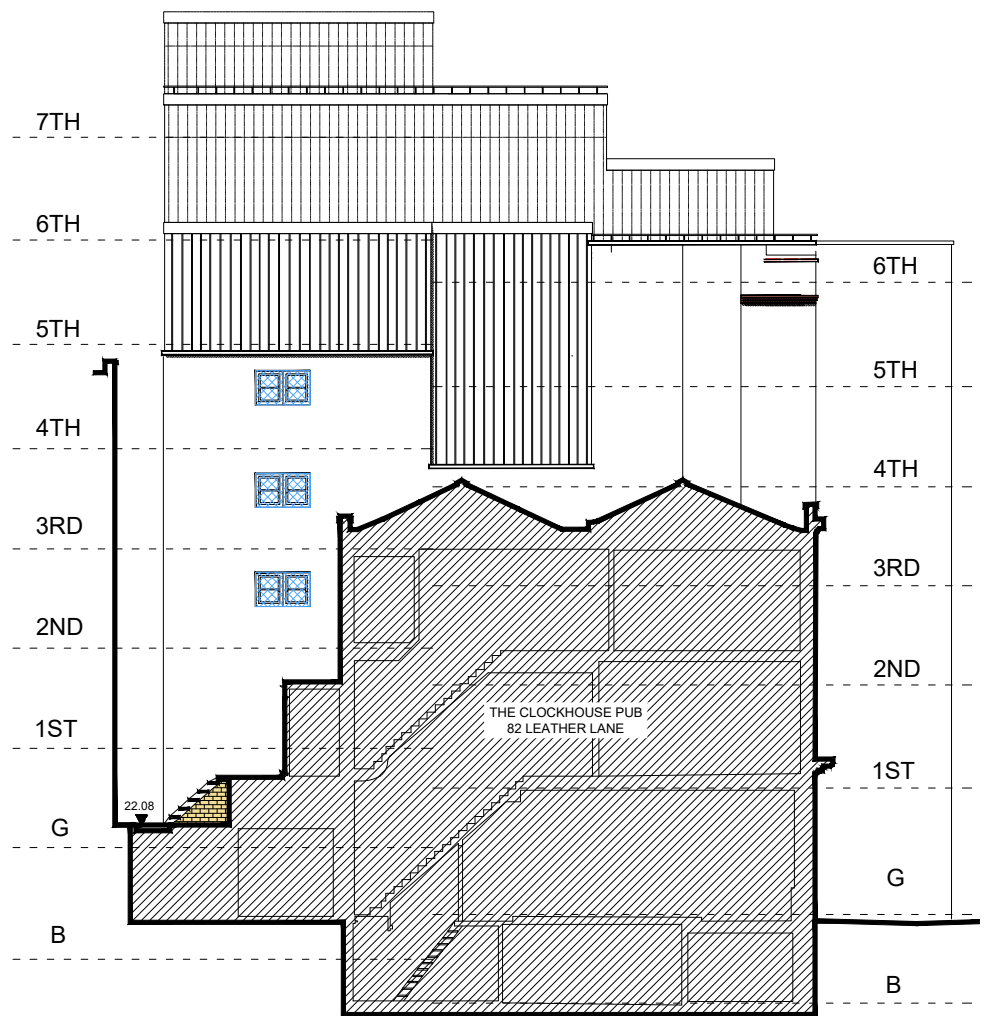
1



PROPOSED TERRACE
PART ELEVATION (WEST)

SCALE 1:200@A3

2



PROPOSED SIDE ELEVATION (NORTH)

SCALE 1:200@A3

3

CLIENT: WHITE LION ESTATES LTD.	PROJECT : 72-80 LEATHER LANE LONDON, EC1N 7TR	<div>1. DO NOT SCALE THIS DRAWING</div> <div>2. ALL DIMENSIONS ARE TO BE VERIFIED ON SITE BY THE CONTRACTOR AND REPORTED TO THE ARCHITECT BEFORE CONSTRUCTION</div> <div>3. ANY DISCREPANCY FOUND BETWEEN THIS DRAWING AND ANY OTHER DOCUMENT MUST BE REPORTED IMMEDIATELY TO THE ARCHITECT</div> <div>4. REMOVE THIS DRAWING FROM CURRENCY WHEN A REVISED DRAWING IS ISSUED</div> <div>5. COPYRIGHT OF THIS DRAWING REMAINS WITH HODGES ARCHITECTS LTD</div>	NO DATE REVISION		DRAWING TITLE: CONDITION 4 WINDOW DETAILS - KEY ELEVATIONS SHEET 1			A3
			DRAWING STATUS: PLANNING		SCALE: 1:200	DATE: 12.03.21	REV.:	
DRAWN BY : NH	CHECKED BY : SH				PROJ. NO: 011	DWG NO: A131		

HA

HODGES ARCHITECTS LTD

TEL: 07932 376 008
EMAIL: NH@HODGESARCHITECTS.CO.UK