

NOTE:

OTHER THAN MATERIALS RELATING TO THE LOUVRE SYSTEM, ALL DETAILS HAVE BEEN SOURCED FROM .PDF COPIES OF PURCELL AND AKTII DRAWINGS WHICH HAVE BEEN CONVERTED TO .DWG AND SCALED USING GIVEN HEIGHT LEVELS AS A GUIDE. SUKLT.D CANNOT BE HELD RESPONSIBLE FOR ANY ERRORS OR INCONSISTENCIES IN SOURCE MATERIAL DETAILS. ALL LEVELS, DIMENSIONS AND SETTING-OUT ARE SUBJECT TO FINAL SURVEY

SPECIFICATION

LOUVRE
BAS CONTINUOUS LINE PRESSED ALUMINIUM ACOUSTIC LOUVRE SYSTEM
BAS L105P
APPROXIMATE WEIGHT - 24KG/M2

FINISHES -

- LOUVRE PROFILES -

EXTERNAL - ALL VISIBLE FACES TO BE FINISHED TO QUALICOAT CLASS 2, PPC RAL 9005 YN305F JET BLACK- MATT FINISH (30% GLOSS), INTERPON 'D' 2525- MINIMUM 60 MICRONS TO CURRENT BS & EN STANDARDS.

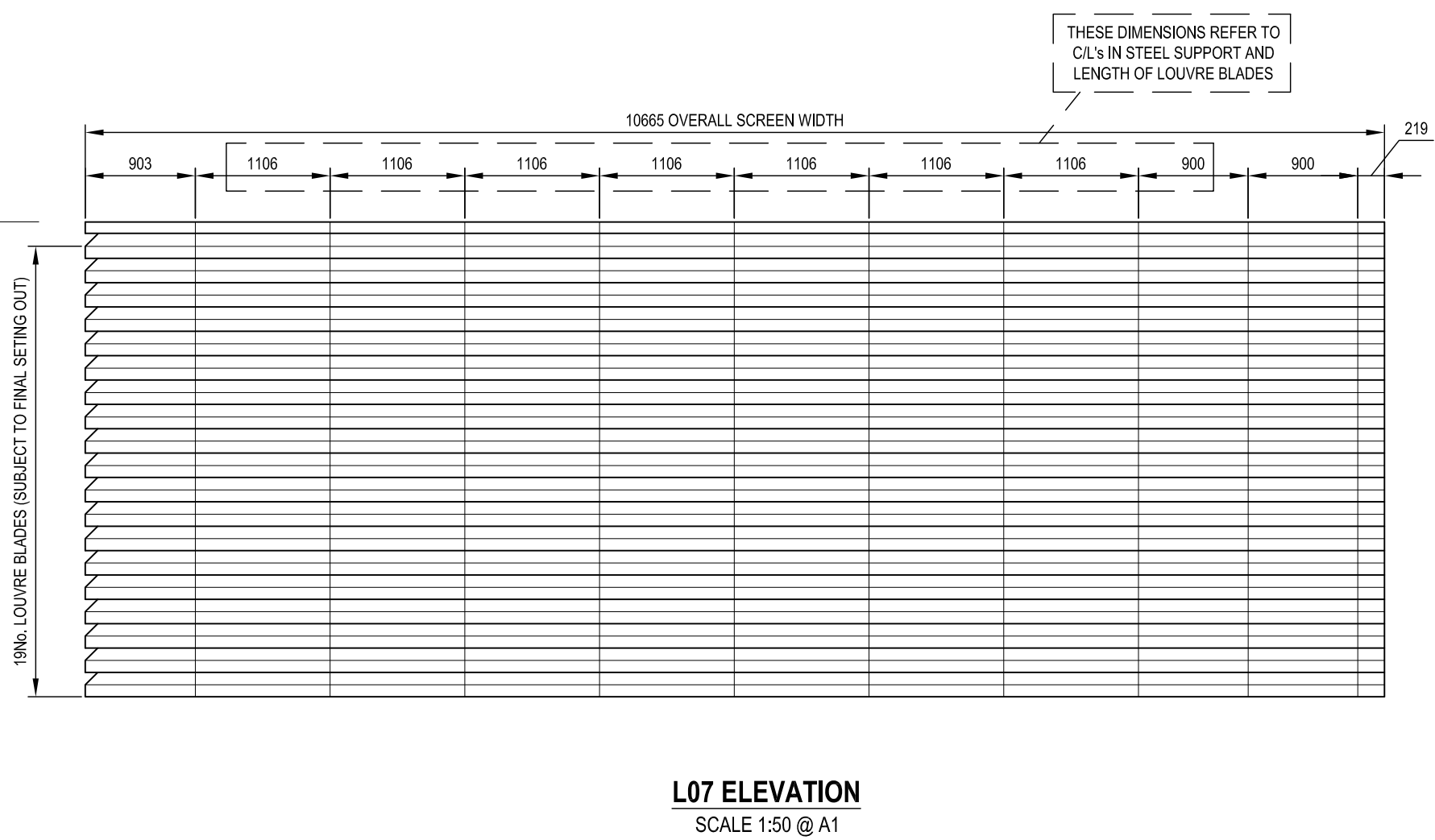
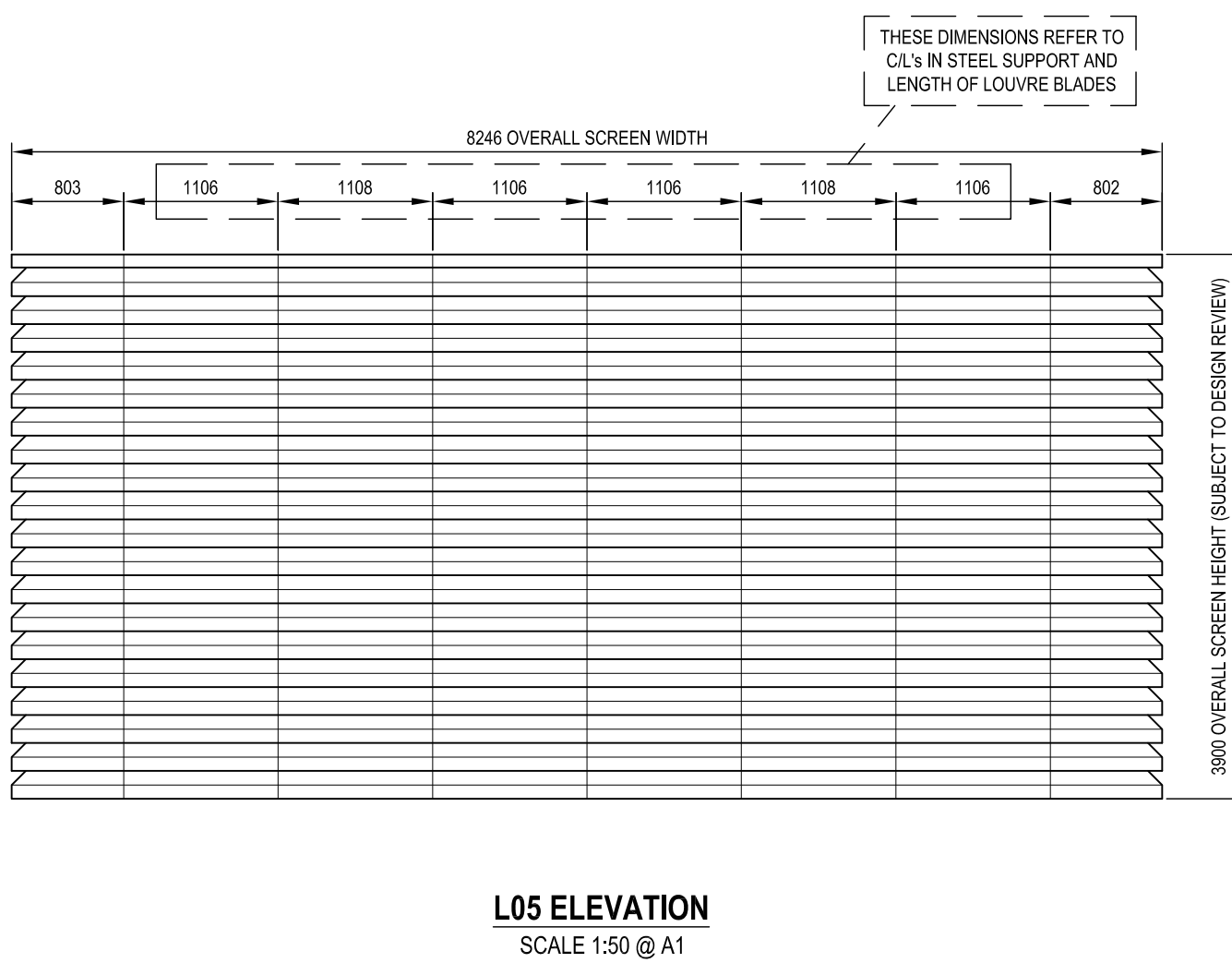
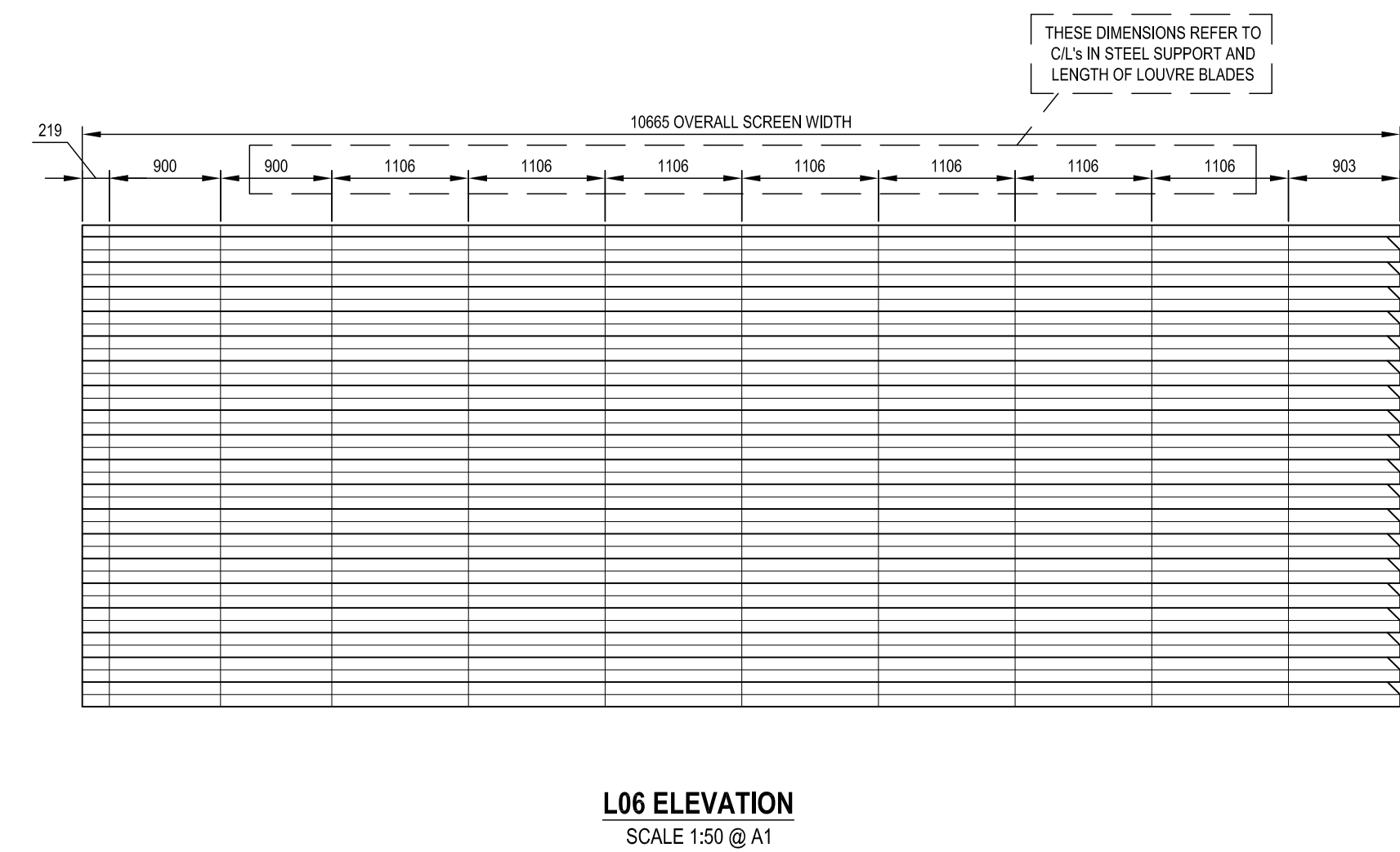
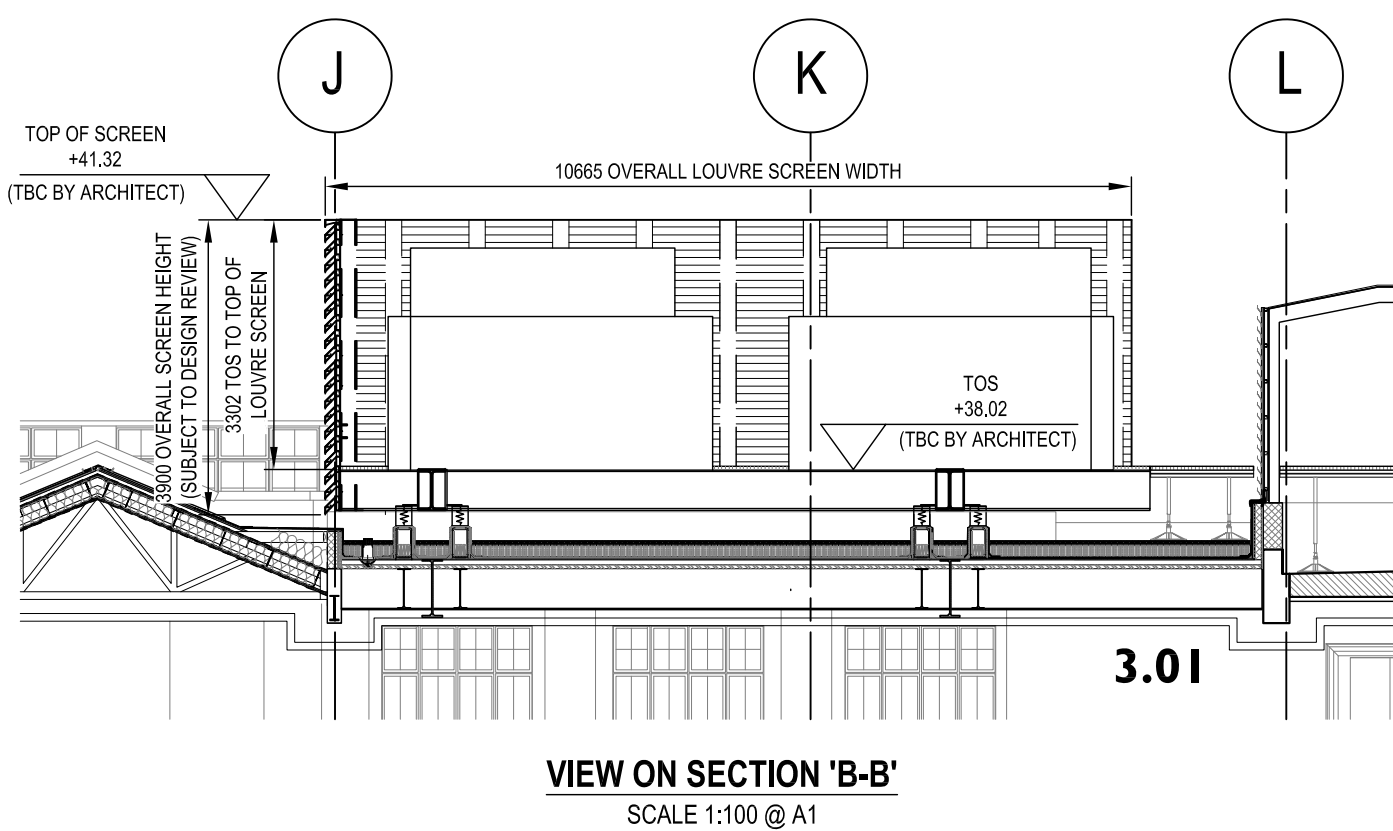
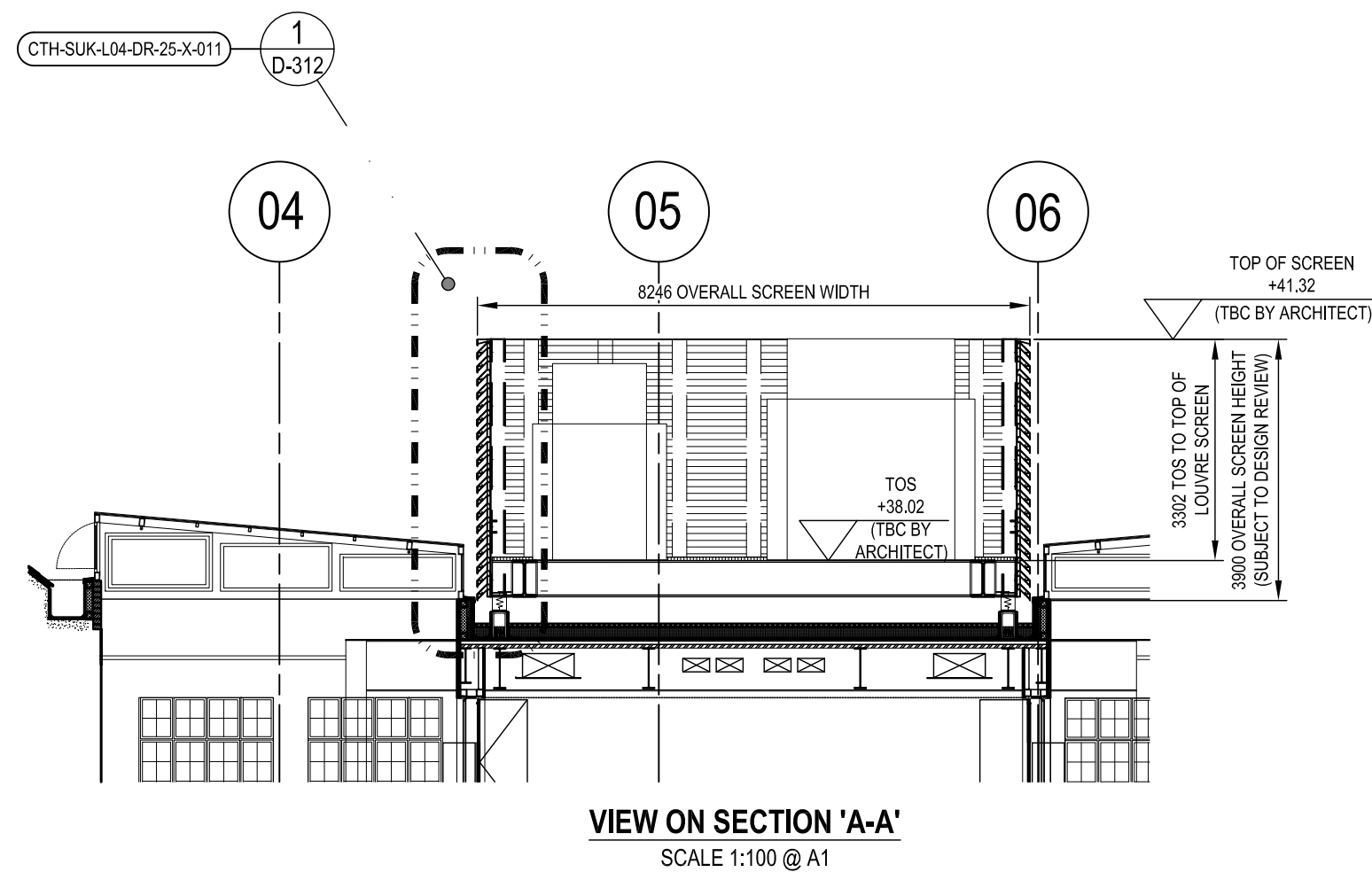
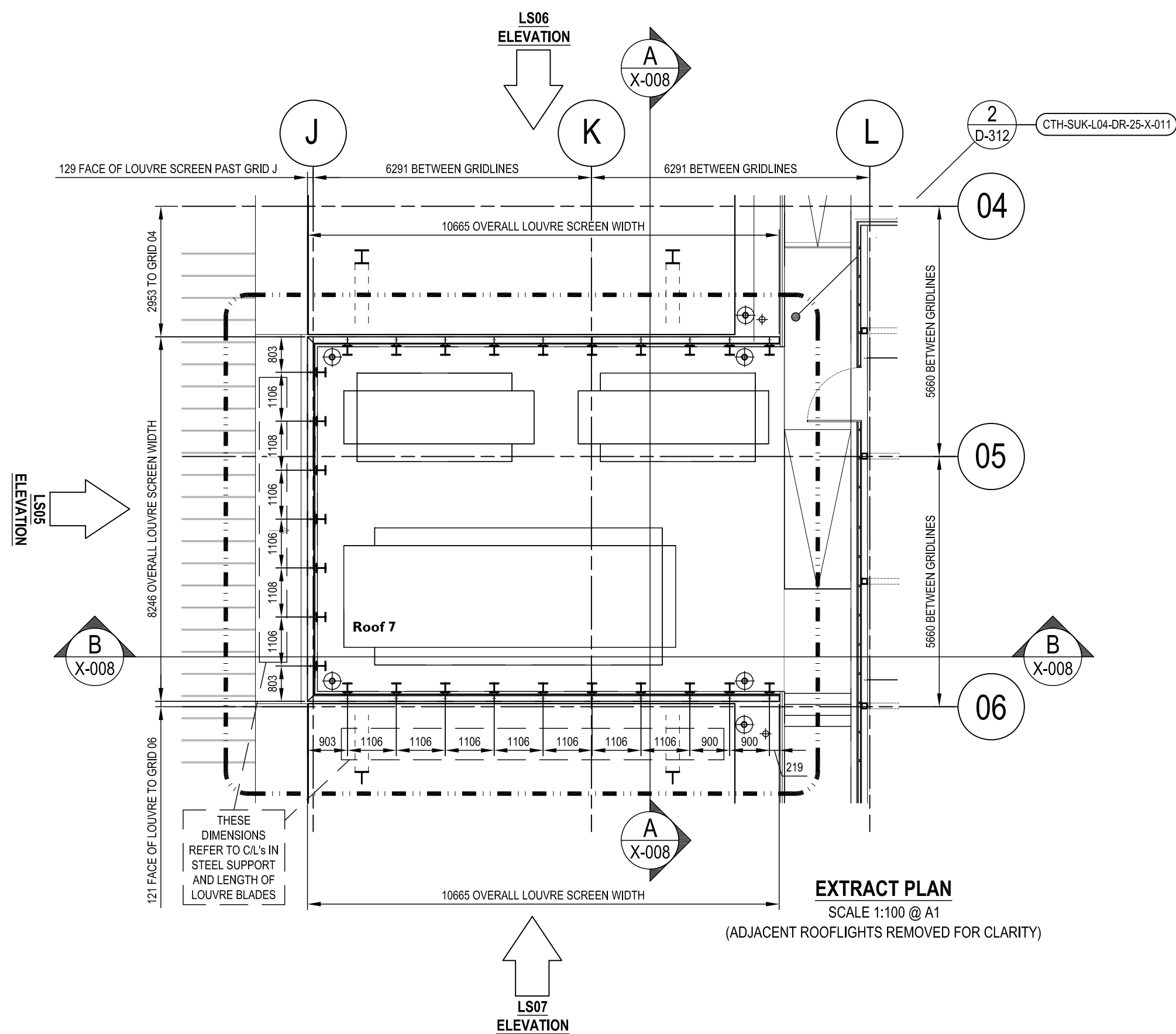
INTERNAL - ALL VISIBLE FACES TO BE FINISHED TO QUALICOAT CLASS 2, PPC RAL 9005 YN305F JET BLACK- MATT FINISH (30% GLOSS), INTERPON 'D' 2525- MINIMUM 60 MICRONS TO CURRENT BS & EN STANDARDS.

NOTES RELATING TO STEELWORK AND LOUVRE SYSTEM SETTING-OUT

SNAPSHOT FROM AKTII DRAWING CTH-AKT-L04-SK-38-S-900 [P01] WHERE 'C01' IS NOTED AS BEING UKC 203x203x52

1:20 (@ A1) SCALE CORNER DETAIL USING PERIMETER LINE OF LOUVRE SCREENS TAKEN FROM PURCELL DRAWINGS AND SHOWING ACCURATELY SIZED UKC 203x203x52 WHICH IDENTIFIES POTENTIAL CLASH WITH EXISTING RWO (UKB & RWS THAT SUPPORT UKC NOT SHOWN)

IN ANTICIPATION OF REVISED AND ACCURATE STEELWORK DRAWINGS WE HAVE DETAILED AN ALTERNATIVE SETTING-OUT OF THE STEEL COLUMNS AS A SUGGESTION ONLY. SUBJECT TO FUTURE CO-ORDINATION



Lendlease TO REMOVE AND REINSTATE ALL INTERNAL AND EXTERNAL FINISHES AND FIXTURES TO ALLOW STRUCTURA TO CARRY OUT WORKS TO THE CURTAIN WALLING TO AGREED DETAILS. Lendlease TO MAKE GOOD AS NECESSARY, IF REQUIRED STRUCTURAL OPENINGS AND INTERNAL FINISHES TO THE EMPLOYER'S REQUIREMENTS.

ANY NEW SUPPORTING STRUCTURES AND STEEL WORK OR ANY BUILDERS WORK OUTSIDE OF STRUCTURA'S REMIT IS TO BE CARRIED OUT BY Lendlease.

PROTECTION AND FINAL BUILDERS CLEAN IS TO BE CARRIED OUT BY Lendlease.

PLEASE NOTE: OUR WINDOWS, DOORS AND CURTAIN WALL, RAINSCREEN CLADDING SYSTEMS INCLUDING THEIR ANCILLARY ITEMS COMPLY TO THE APPROPRIATE CURRENT BSEN STANDARDS HOWEVER THE PRODUCTS AND SYSTEMS WE USE IN SOME CASES WILL INCORPORATE SOME LIMITED COMBUSTIBLE MATERIALS PERMISSIBLE IN CURRENT APPROVED H M GOVERNMENT DOCUMENT B : 2013 AND GUIDANCE NOTES PUBLISHED BY THE CWCCT REFERENCE TN68.

IT WILL BE DEEMED UNLESS AGREED IN WRITING THAT THE RESPONSIBILITY REST WITH THE CLIENT, ARCHITECTS, CDM DESIGNERS, FACADE CONSULTANTS OR THE FIRE CONSULTANTS TO MAKE SURE OUR PRODUCTS AND SYSTEMS COMPLY WITH THE EMPLOYERS REQUIREMENTS AND OR LOCAL BUILDING CONTROL APPROVALS. THE SAME CAN BE SAID FOR ANY FIRE RATED GLAZING INTERNALLY OR EXTERNALLY INCLUDING ANY FIRE RATED DOORS IN ANY ROUTE OF ESCAPE.

DRAWINGS, SPECIFICATIONS AND CALCULATIONS ARE SUBMITTED BY SUKL IN ACCORDANCE WITH RELEVANT CLAUSE OF THE SUBCONTRACT FOR COMMENT AND OR APPROVAL AS REQUIRED BY THE SUBCONTRACT AND DEFINED BY THE MAIN CONTRACT. ANY COMMENT OR APPROVAL OF THE DRAWINGS RETURNED TO SUKL DOES NOT RELIEVE SUKL OF HIS RESPONSIBILITIES UNDER THE SUBCONTRACT.

UNLESS ITEMS/ELEMENTS ARE NOTED BY SUKL, THEY WILL BE BY OTHERS.

-	-	-	-
-	-	-	-
-	-	-	-
-	-	-	-
-	-	-	-
REV	DATE	REVISION	INT