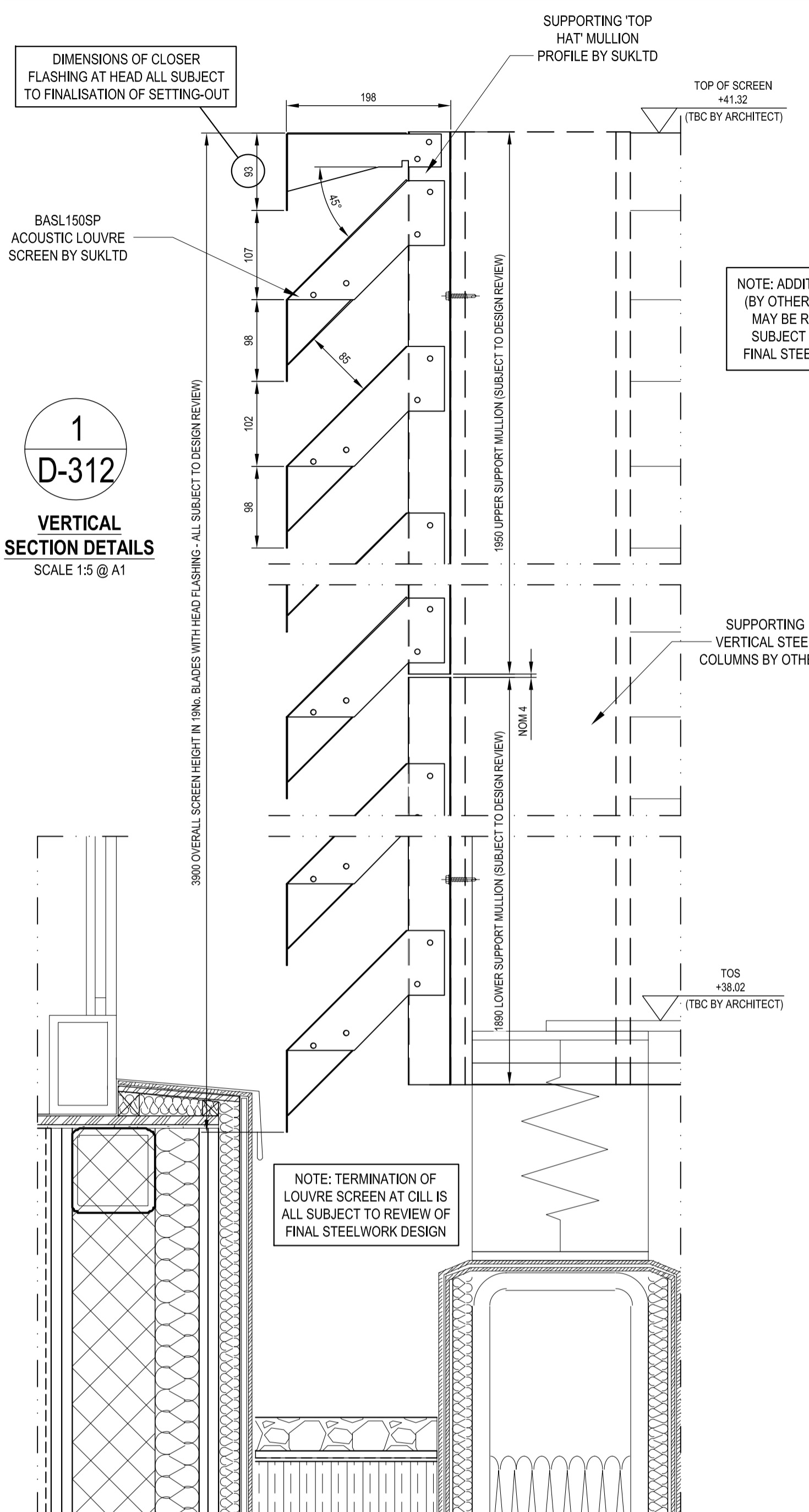


STEELWORK DEFLECTION HAS BEEN ADVISED AS BEING H/250 (= NOM 16MM) SUKLT TO CONFIRM WHETHER OR NOT THE LOUVRE SYSTEM CAN ACCOMMODATE THIS MOVEMENT FOLLOWING PROGRESSION OF STEELWORK DRAWINGS AND CO-ORDINATION DETAILS

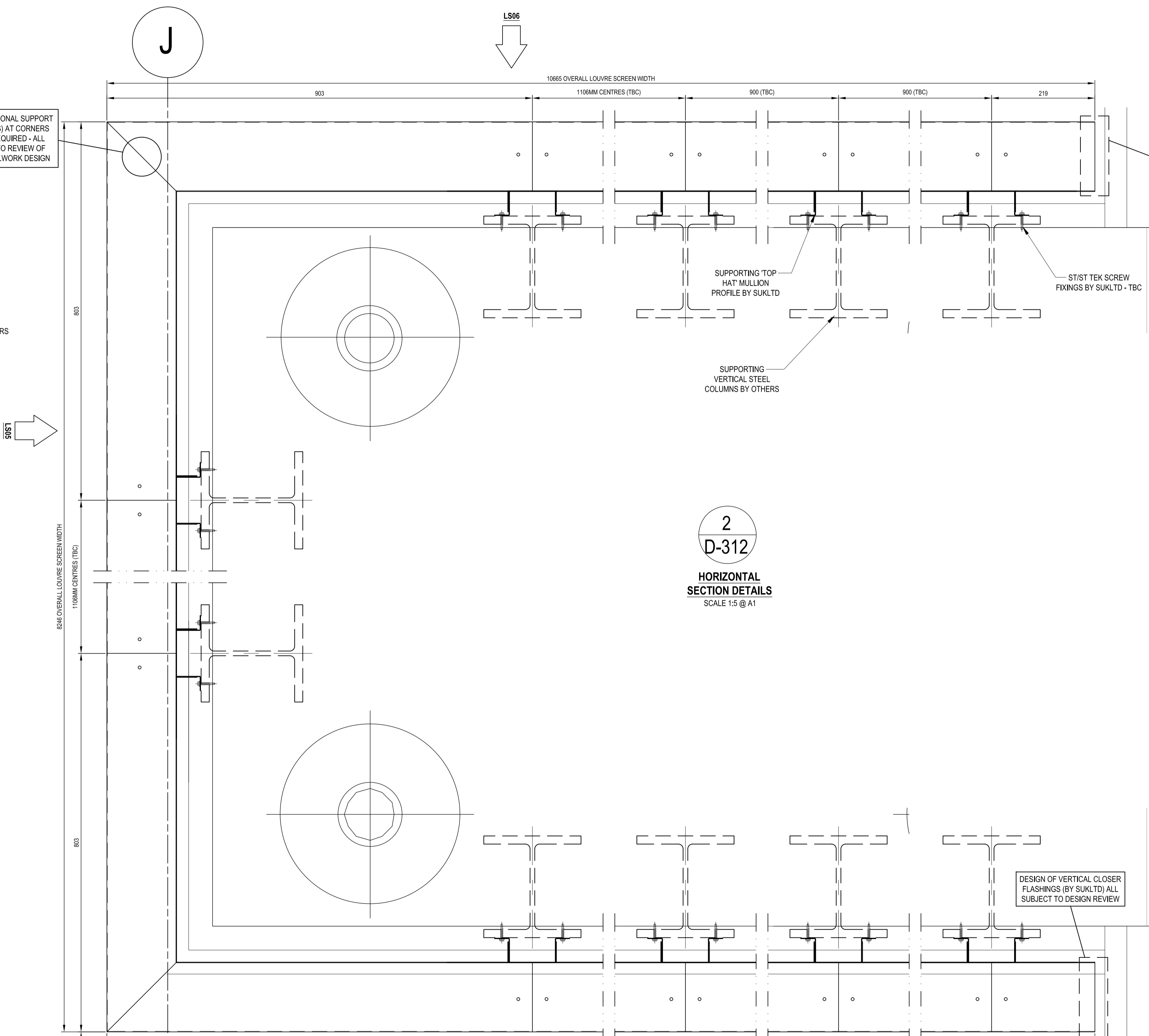


1
D-312
VERTICAL SECTION DETAILS
SCALE 1:5 @ A1

NOTE: ADDITIONAL SUPPORT (BY OTHERS) AT CORNERS MAY BE REQUIRED - ALL SUBJECT TO REVIEW OF FINAL STEELWORK DESIGN

NOTE: TERMINATION OF LOUVRE SCREEN AT CILLS IS ALL SUBJECT TO REVIEW OF FINAL STEELWORK DESIGN

NOTE: AN ADDITIONAL 3 No. (MINIMUM) HORIZONTAL SUPPORTS WILL BE NEEDED IF SUPPORTING STEEL COLUMNS EXCEED 1200MM CENTRES (HORIZONTAL SUPPORT IS SHOWN HERE AS NOMINAL 180x90 PFC - ANY ADDITIONAL SUPPORTS TO BE CALCULATED, SUPPLIED AND INSTALLED BY OTHERS)



2
D-312
HORIZONTAL SECTION DETAILS
SCALE 1:5 @ A1

SPECIFICATION

LOUVRE
BASIL CONTINUOUS LINE PRESSED ALUMINIUM ACOUSTIC LOUVRE SYSTEM
BASIL 150SP
APPROXIMATE WEIGHT - 24KG/M2

FINISHES

- LOUVRE PROFILES -

EXTERNAL - ALL VISIBLE FACES TO BE FINISHED TO QUALICOAT CLASS 2, PPC RAL 9005 YN305F JET BLACK-MATT FINISH (90% GLOSS), INTERPON D' 2525- MINIMUM 60 MICRONS TO CURRENT BS & EN STANDARDS.

INTERNAL - ALL VISIBLE FACES TO BE FINISHED TO QUALICOAT CLASS 2, PPC RAL 9005 YN305F JET BLACK-MATT FINISH (90% GLOSS), INTERPON D' 2525- MINIMUM 60 MICRONS TO CURRENT BS & EN STANDARDS.

DESIGN OF VERTICAL CLOSER FLASHINGS (BY SUKLT) ALL SUBJECT TO DESIGN REVIEW

Revised 13th August 2020 For
- APPROVAL -

LENDLEASE TO REMOVE AND REINSTATE ALL INTERNAL AND EXTERNAL FINISHES AND FIXTURES TO ALLOW STRUCTURA TO CARRY OUT WORKS TO THE CURTAIN WALLING TO AGREED DETAILS. LENDLEASE TO MAKE GOOD AS NECESSARY, IF REQUIRED STRUCTURAL OPENINGS AND INTERNAL FINISHES TO THE EMPLOYER'S REQUIREMENTS.

ANY NEW SUPPORTING STRUCTURES AND STEEL WORK OR ANY BUILDERS WORK OUTSIDE OF STRUCTURA'S REMIT IS TO BE CARRIED OUT BY LENDLEASE.

PROTECTION AND FINAL BUILDERS CLEAN IS TO BE CARRIED OUT BY LENDLEASE.

PLEASE NOTE: CURTAIN WALLING, DOORS AND CURTAIN WALL, RAINSCREEN CLADDING SYSTEMS INCLUDING THEIR ANCILLARY ITEMS COMPLY TO THE APPROPRIATE CURRENT BSEN STANDARDS HOWEVER THE PRODUCTS AND SYSTEMS WE USE IN SOME CASES WILL INCORPORATE SOME LIMITED COMBUSTIBLE MATERIALS PERMISSIBLE IN CURRENT APPROVED H M GOVERNMENT DOCUMENT B : 2013 AND GUIDANCE NOTES PUBLISHED BY THE CWCT REFERENCE TN88.

IT WILL BE DEEMED UNLESS AGREED IN WRITING THAT THE RESPONSIBILITY REST WITH THE CLIENT, ARCHITECTS, CDM DESIGNERS, FACADE CONSULTANTS OR THE FIRE CONSULTANTS TO MAKE SURE OUR PRODUCTS AND SYSTEMS COMPLY WITH THE EMPLOYER'S REQUIREMENTS AND OR LOCAL BUILDING CONTROL APPROVALS. THE SAME CAN BE SAID FOR ANY FIRE RATED GLAZING INTERNALLY OR EXTERNALLY INCLUDING ANY FIRE RATED DOORS IN ANY ROUTE OF ESCAPE.

DRAWINGS, SPECIFICATIONS AND CALCULATIONS ARE SUBMITTED BY SUKLT IN ACCORDANCE WITH RELEVANT CLAUSE OF THE SUBCONTRACT FOR COMMENT AND OR APPROVALS REQUIRED BY THE SUBCONTRACT AND DEFINED BY THE MAIN CONTRACT. ANY COMMENT OR APPROVAL OF THE DRAWINGS RETURNED TO SUKLT DOES NOT RELIEVE SUKLT OF HIS RESPONSIBILITIES UNDER THE SUBCONTRACT.

UNLESS ITEMISEMENTS ARE NOTED BY SUKLT, THEY WILL BE BY OTHERS.

REV	DATE	REVISION	INT

STRUCTURA
Structura UK Ltd
Unit 1, Oakcroft Road,
Chesham, Surrey, KT19 1BH
Tel: 029 897 5961
Fax: 029 897 5905
E: Mail@structura.co.uk

Location: CAMDEN TOWN HALL (CTH)
LONDON W1H 9JE

Title: PLANT ROOM - ACOUSTIC LOUVRE PANELS
HORIZONTAL AND VERTICAL DETAILS

Client: LENDLEASE
20 TRITON ST, REGENT'S PLACE, LONDON NW1 3BF

Drawn: JA Date: 11.08.20 Checked: AF Scale: AS SHOWN

Dwg No: CTH-SUK-L04-DR-25-X-011

Structura's Ref No: 24067-D-312 Rev: P00

Reason for Issue: APPROVAL

1 = INDICATES DETAIL NUMBERS
D-001 = INDICATES DRAWING NUMBER

S:\CONTRACT\24067 Camden Town Hall Drawings\Structura Drawings\A&E & D Drawings