

**NOTE:**  
OTHER THAN MATERIALS RELATING TO THE LOUVRE SYSTEM, ALL DETAILS HAVE BEEN SOURCED FROM .PDF COPIES OF PURCELL AND AKTII DRAWINGS WHICH HAVE BEEN CONVERTED TO .DWG AND SCALED USING GIVEN HEIGHT LEVELS AS A GUIDE. SUK LTD CANNOT BE HELD RESPONSIBLE FOR ANY ERRORS OR INCONSISTENCIES IN SOURCE MATERIAL DETAILS.  
ALL LEVELS, DIMENSIONS AND SETTING-OUT ARE SUBJECT TO FINAL SURVEY

**SPECIFICATION**

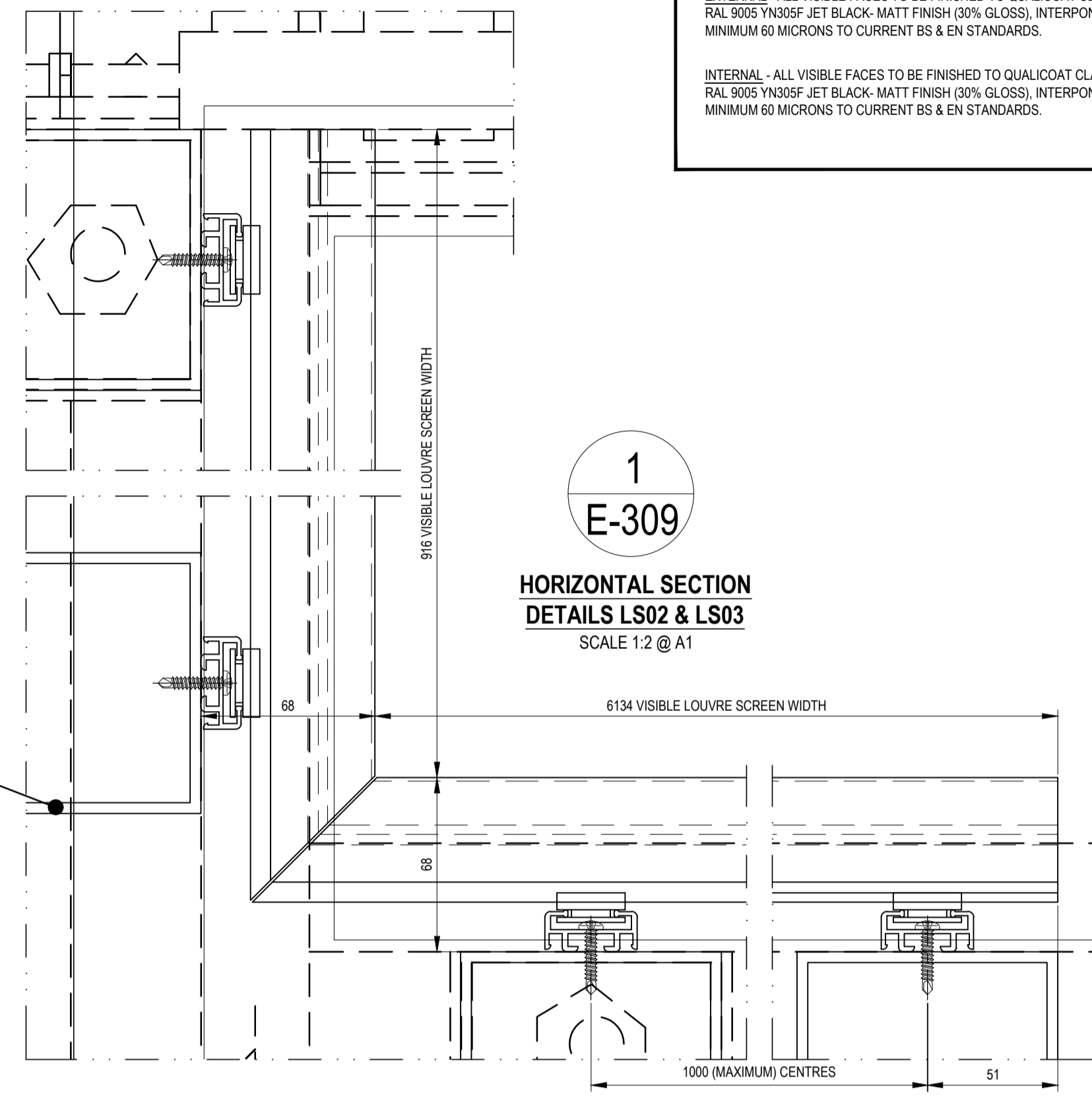
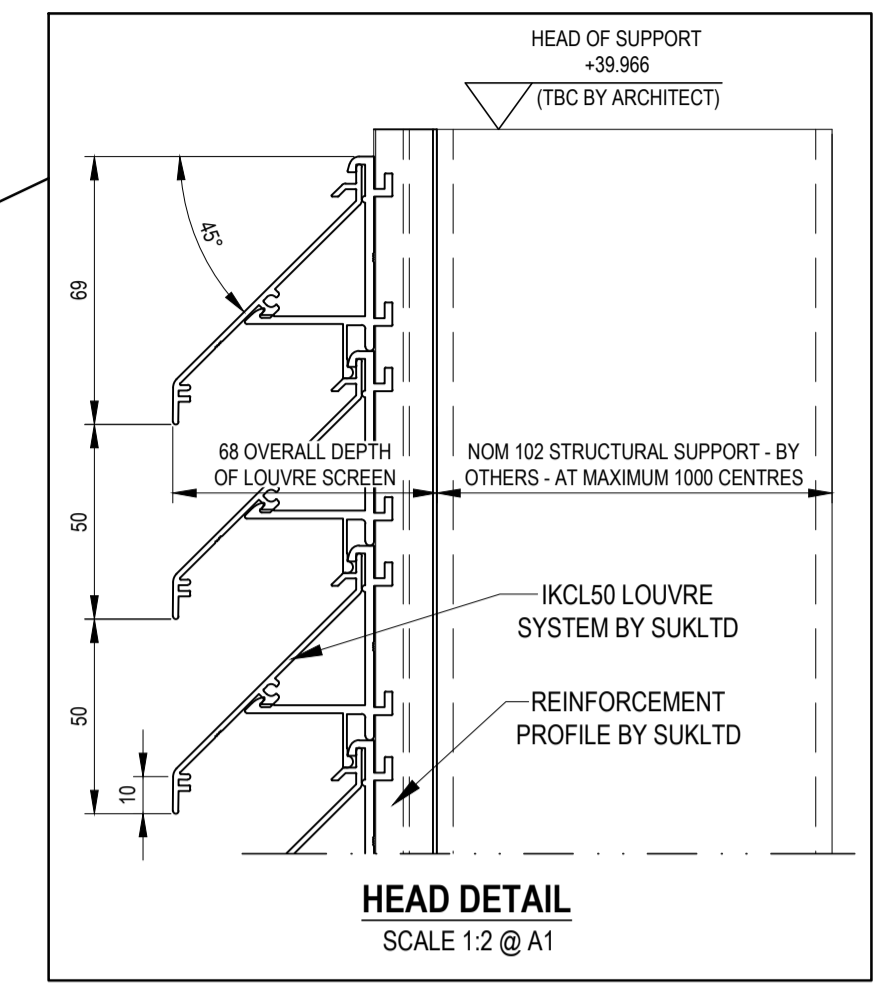
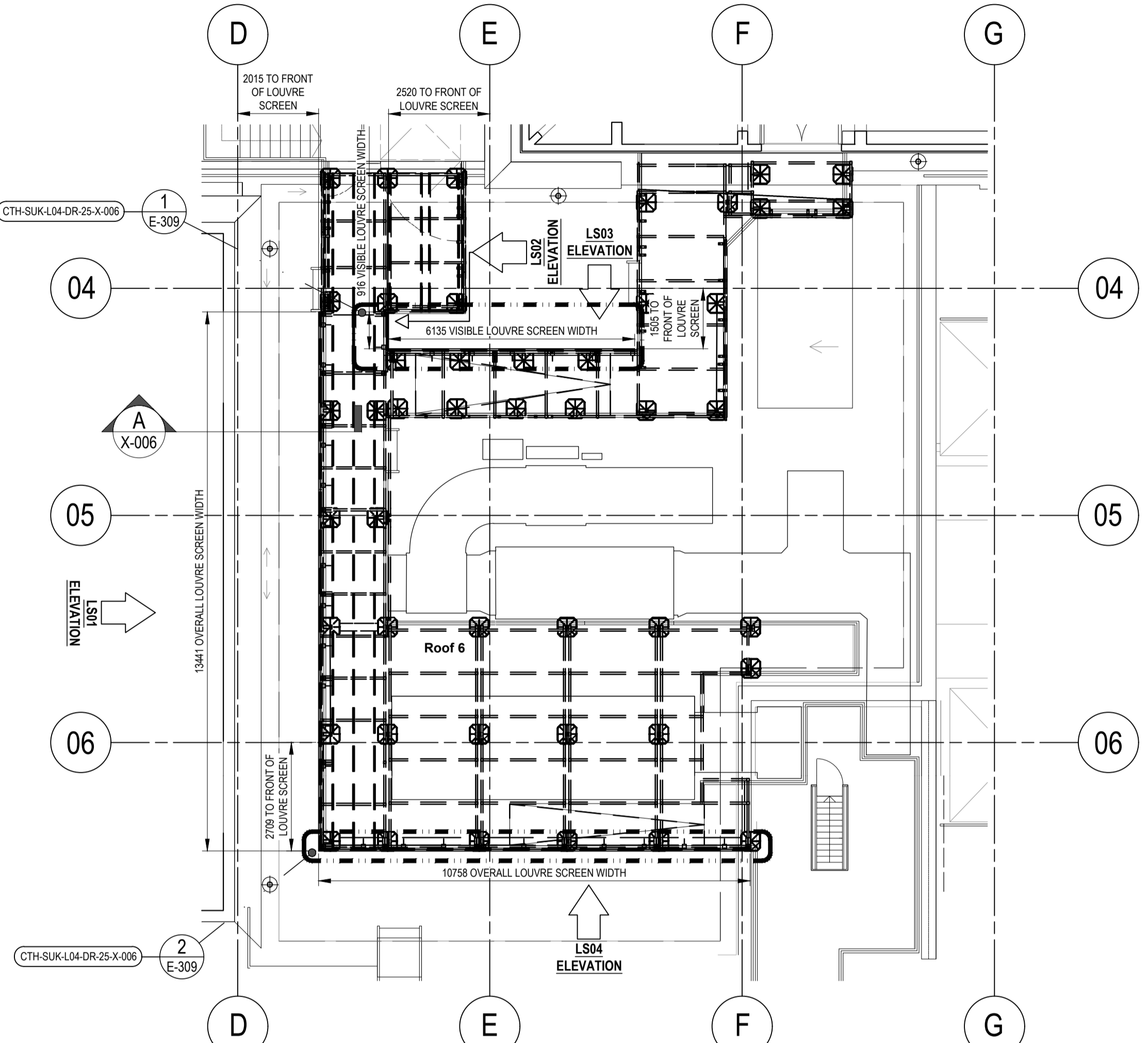
**LOUVRE**  
IKON CONTINUOUS EXTRUDED ALUMINIUM LOUVRE SYSTEM 'IKCL50'.

**FINISHES -**

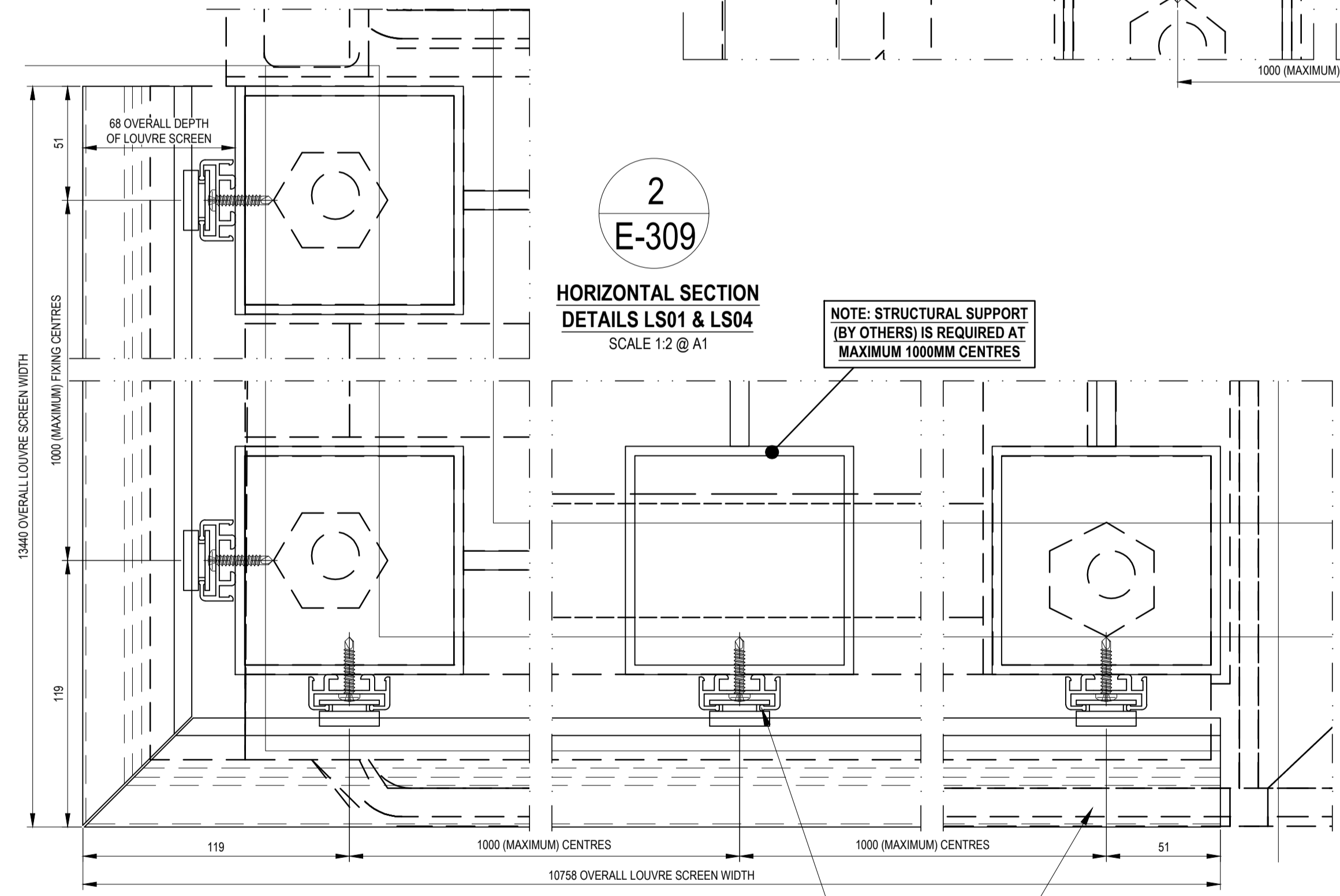
- LOUVRE PROFILES -

**EXTERNAL -** ALL VISIBLE FACES TO BE FINISHED TO QUALICOAT CLASS 2. PPC RAL 9005 YN309F JET BLACK- MATT FINISH (30% GLOSS), INTERPON 'D' 2525- MINIMUM 60 MICRONS TO CURRENT BS & EN STANDARDS.

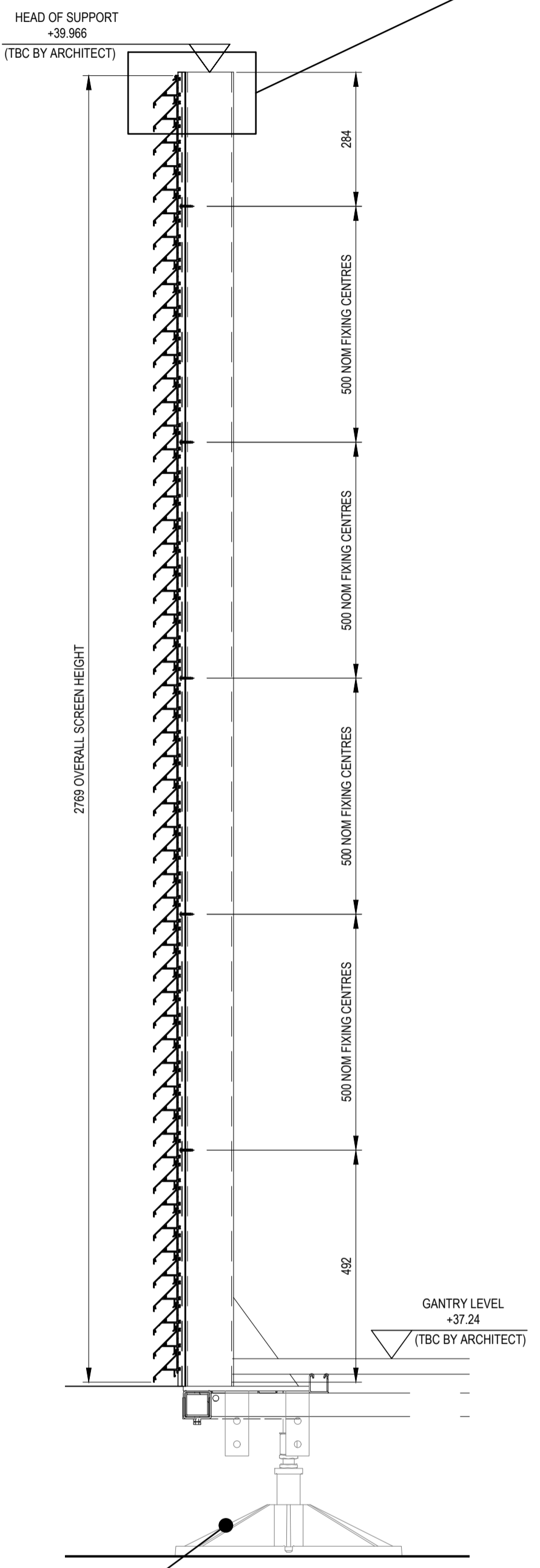
**INTERNAL -** ALL VISIBLE FACES TO BE FINISHED TO QUALICOAT CLASS 2. PPC RAL 9005 YN309F JET BLACK- MATT FINISH (30% GLOSS), INTERPON 'D' 2525- MINIMUM 60 MICRONS TO CURRENT BS & EN STANDARDS.



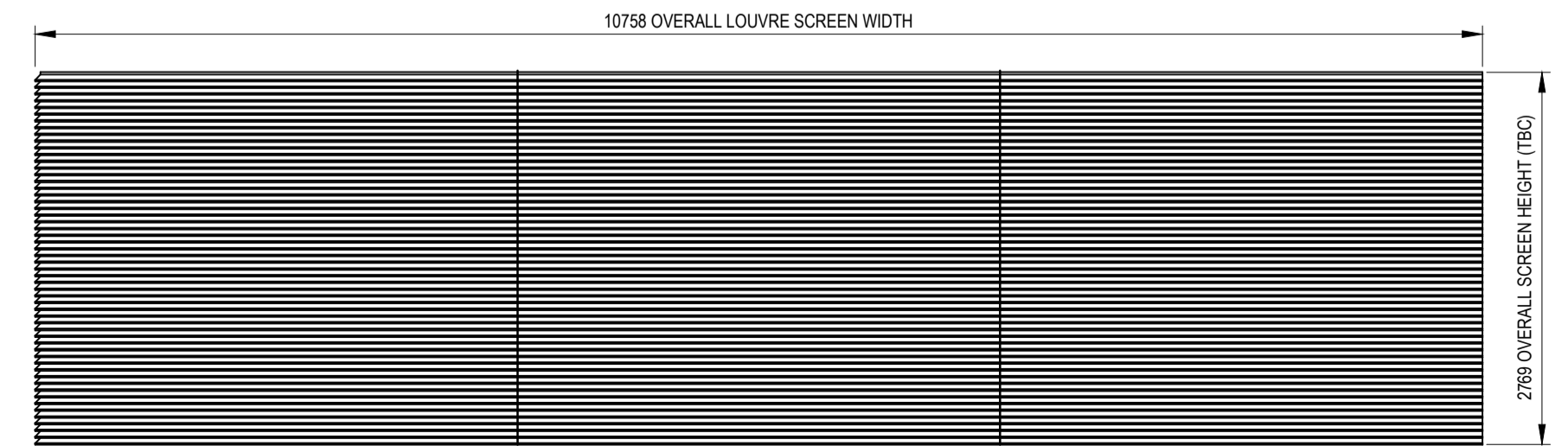
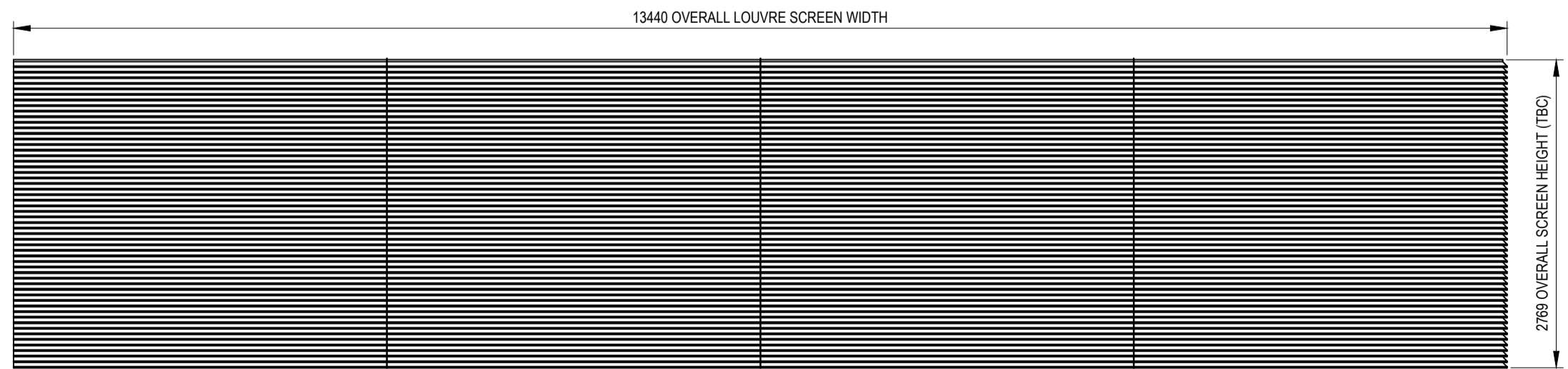
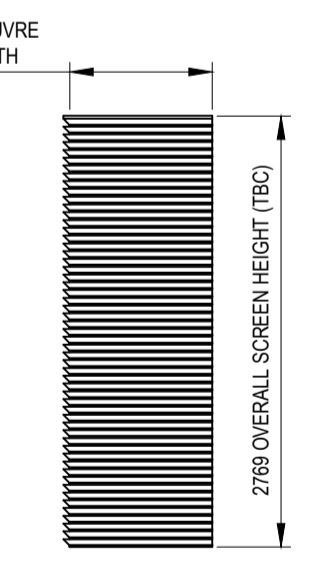
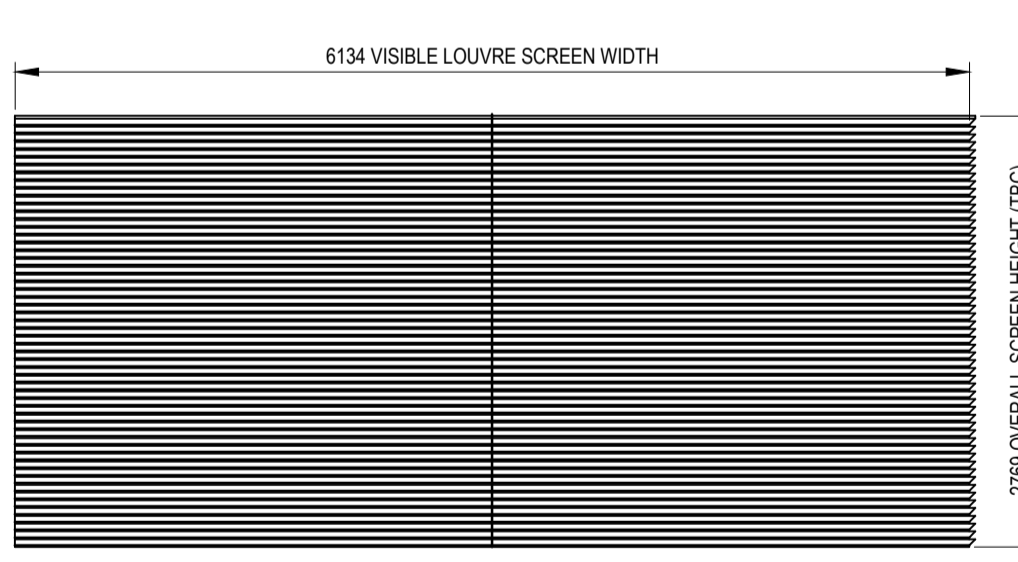
**NOTE: STRUCTURAL SUPPORT (BY OTHERS) IS REQUIRED AT MAXIMUM 1000MM CENTRES**



**NOTE: STRUCTURAL SUPPORT (BY OTHERS) IS REQUIRED AT MAXIMUM 1000MM CENTRES**



**NOTE: BIG FOOT GANTRY SYSTEM AND ALL ASSOCIATED MATERIALS AND STRUCTURAL SUPPORT FOR LOUVRE SCREEN IS TO BE BY OTHERS**



**LENDLEASE TO REMOVE AND REINSTATE ALL INTERNAL AND EXTERNAL FINISHES AND FIXTURES TO ALLOW STRUCTURE TO CARRY OUT WORKS TO THE CURTAIN WALLING TO AGREED DETAILS. LENDLEASE TO MAKE GOOD AS NECESSARY. IF REQUIRED STRUCTURAL OPENINGS AND INTERNAL FINISHES TO THE EMPLOYER'S REQUIREMENTS.**

**ANY NEW SUPPORTING STRUCTURES AND STEEL WORK OR ANY BUILDERS WORK OUTSIDE OF STRUCTURE'S REMIT IS TO BE CARRIED OUT BY LENDLEASE.**

**PROTECTION AND FINAL BUILDERS CLEAN IS TO BE CARRIED OUT BY LENDLEASE.**

**PLEASE NOTE**  
OUR WINDOWS, DOORS AND CURTAIN WALL, RAINSCREEN CLADDING SYSTEMS INCLUDING THEIR ANCILLARY ITEMS COMPLY TO THE APPROPRIATE CURRENT BSEN STANDARDS HOWEVER THE PRODUCTS AND SYSTEMS WE USE IN SOME CASES WILL INCORPORATE SOME LIMITED COMBUSTIBLE MATERIALS PERMISSIBLE IN CURRENT APPROVED H M GOVERNMENT DOCUMENT B- 2013 AND GUIDANCE NOTES PUBLISHED BY THE CWCT REFERENCE TN08.

**IT WILL BE DEEMED UNLESS AGREED IN WRITING THAT THE RESPONSIBILITY REST WITH THE CLIENT, ARCHITECTS, COM DESIGNERS, FACADE CONSULTANTS OR THE FIRE CONSULTANTS TO MAKE SURE OUR PRODUCTS AND SYSTEMS COMPLY WITH THE EMPLOYERS REQUIREMENTS AND OR LOCAL BUILDING CONTROL APPROVALS. THE SAME CAN BE SAID FOR ANY FIRE RATED GLAZING INTERNALLY OR EXTERNALLY INCLUDING ANY FIRE RATED DOORS IN ANY ROUTE OF ESCAPE.**

**DRAWINGS, SPECIFICATIONS AND CALCULATIONS ARE SUBMITTED BY SUK LTD IN ACCORDANCE WITH RELEVANT CLAUSE OF THE SUBCONTRACT FOR COMMENT AND OR APPROVAL AS REQUIRED BY THE SUBCONTRACT AND DEFINED BY THE MAIN CONTRACT. ANY COMMENT OR APPROVAL OF THE DRAWINGS RETURNED TO SUK LTD DOES NOT RELIEVE SUK LTD OF HIS RESPONSIBILITIES UNDER THE SUBCONTRACT.**

**UNLESS ITEMS/ELEMENTS ARE NOTED BY SUK LTD, THEY WILL BE BY OTHERS.**

REV	DATE	REVISION	INT

**Structura UK Ltd**  
Unit 1, Colindale Road,  
Chesham, Surrey, KT19 1RH  
Tel: 020 8397 4361  
Fax: 020 8391 5865  
E-Mail: info@structura.co.uk

Location	CAMDEN TOWN HALL (CTH) LONDON WC1H 9JE		
Title	LOUVRED PLANT ROOM SCREENS ELEVATION / PLANS / SECTIONS & DETAILS		
Client	LENDLEASE 20 TRITON ST, REGENT S PLACE, LONDON NW1 3BP		
Drawn	JA	Date	18.08.20
Checked	AF	Scale	AS SHOWN
Dwg No	CTH-SUK-L04-DR-25-X-006		
Structura's Ref No	24067-E-309	Rev	P00
Reason for Issue	APPROVAL		

Issued: 18th August 2020 For  
**APPROVAL**

**1** INDICATES DETAIL NUMBERS  
**E-001** INDICATES E DRAWING NUMBER