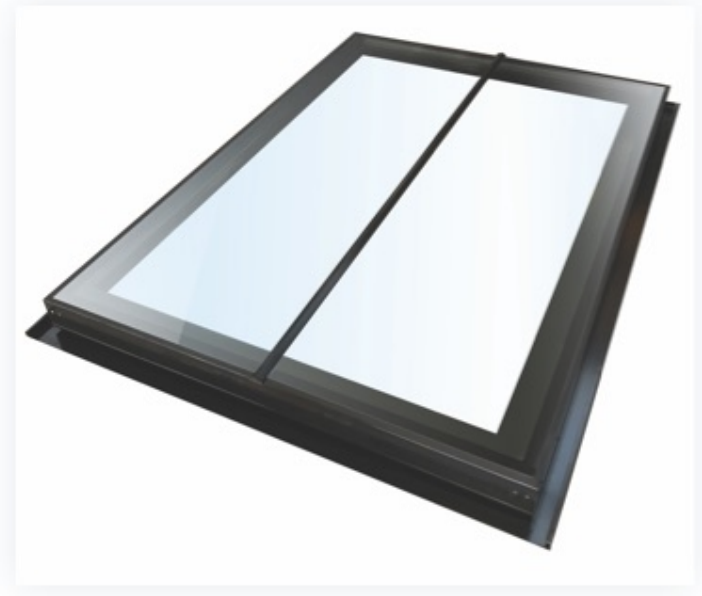
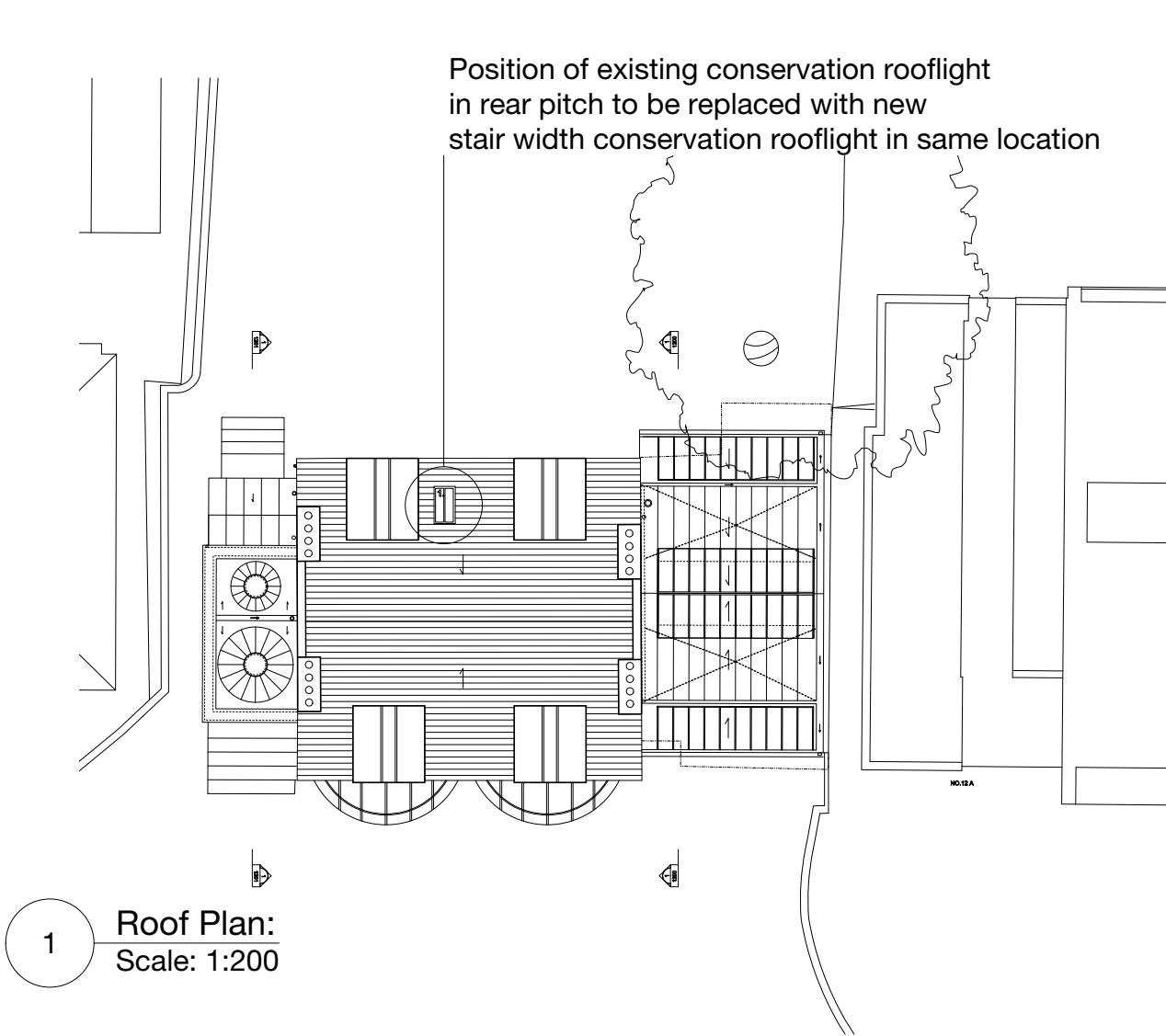


All dimensions are to be checked on site before any work proceeds. Do not scale this drawing but use only figured dimensions. Any errors or omissions are to be reported to 51%.

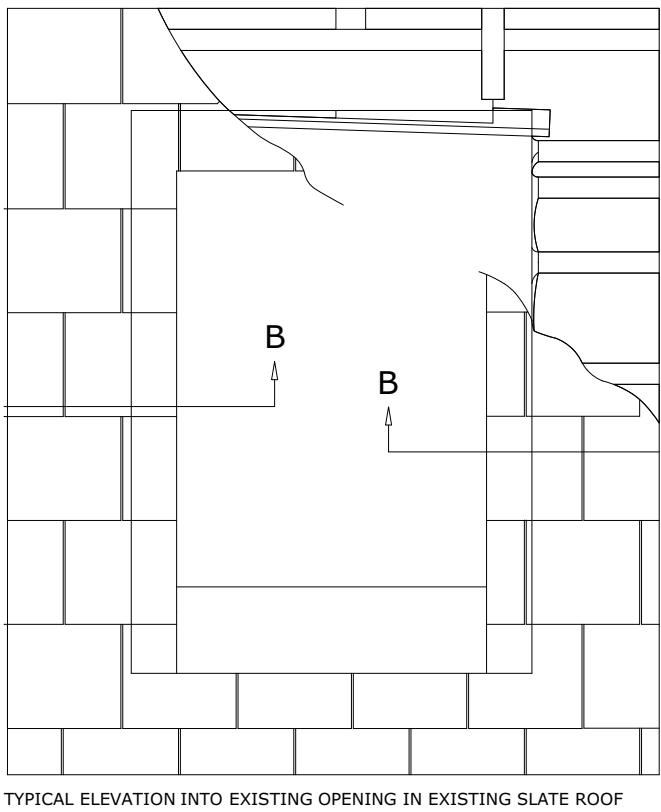
The Contractor shall submit full size drawings and specifications to 51% for approval, without which, manufacture shall not commence.

This drawing is to be read in conjunction with all the relevant consultants' and/or specialists' drawings/documents, and any discrepancies or variations are to be notified to 51% before work commences.

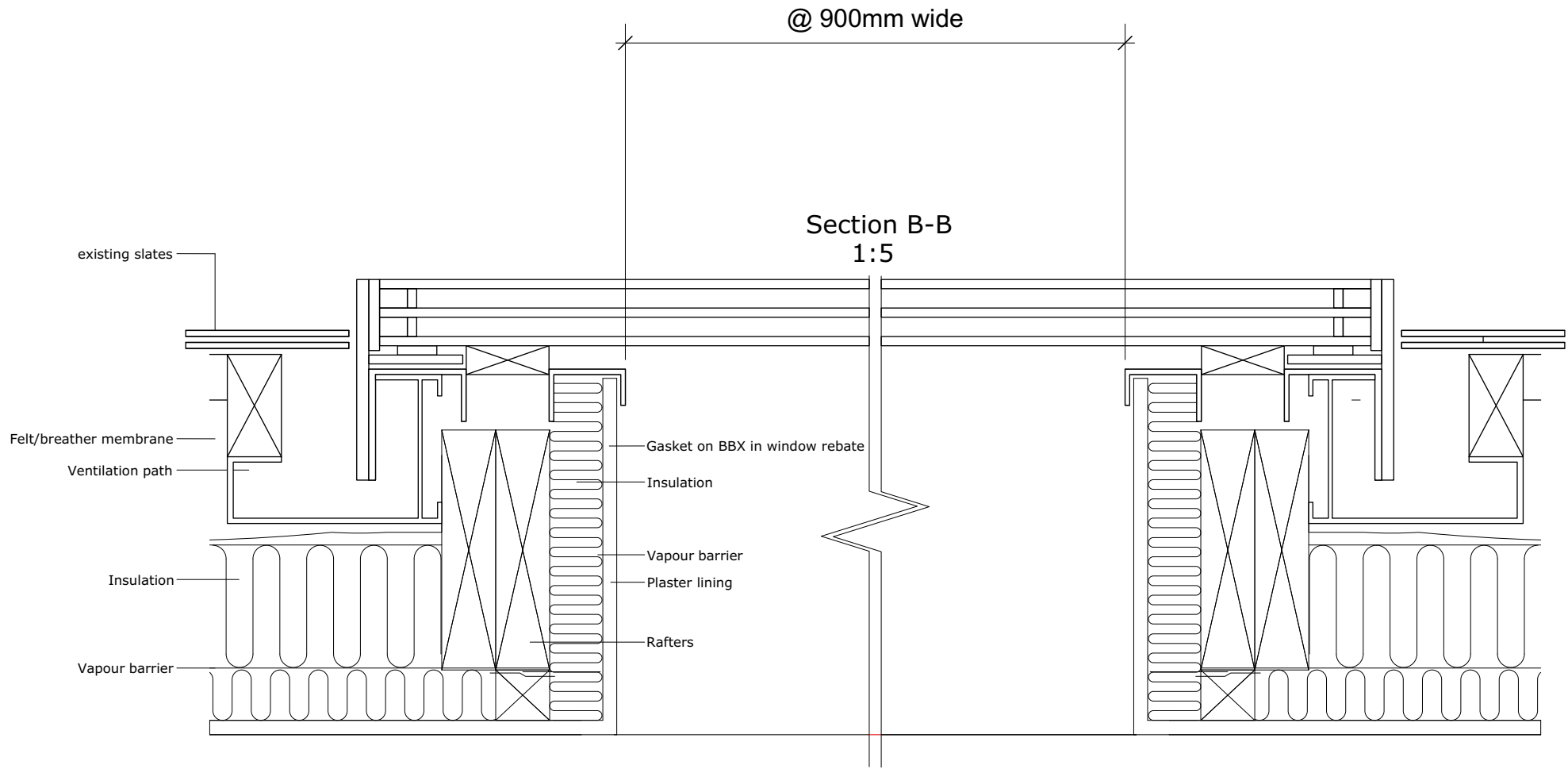
For further information please see other drawings and documents enclosed with this drawing. For information on Structure use Engineer's drawings. For further information on Services use Engineer's and/or Contractor's drawings.



4 Luxlite Conservation Rooflight



2 Conservation rooflight details to rear pitch
Scale: 1:5



51

12 Keats Grove
London NW3 2RN

Kylie Richardson
Project No. 1168 12KG

51 architecture
1a Cobham Mews, Agar Grove, London NW1 9SB
+ 44 [0] 203 355 1205

For Planning
RIBA Stage
Conservation Rooflight

Scale 1:200 1:5 @ A2
Drawn by PT, 2021_03_24

Issue Notes:

5003