

All dimensions are to be checked on site before any work proceeds. Do not scale this drawing but use only figured dimensions. Any errors or omissions are to be reported to 51%.

The Contractor shall submit full size drawings and specifications to 51% for approval, without which, manufacture shall not commence.

This drawing is to be read in conjunction with all the relevant consultants' and/or specialists' drawings/documents, and any discrepancies or variations are to be notified to 51% before work commences.

For further information please see other drawings and documents enclosed with this drawing. For information on Structure use Engineer's drawings. For further information on Services use Engineer's and/or Contractor's drawings.

R0: 100mm x 50mm modern timber with 100 x 50 timber noggin at ridge beam

R1: 90mm x 60mm no furring.

R2: 100mm x 65mm with 25mm furring on top

R3: 95mm x 60mm with 50mm furring on top with 100 x 50 modern timber tie above purlin

R4: 100mm x 60mm with 70mm furring on top, over fractured purlin

R5: 110mm x 70mm with 70mm furring on top with 100 x 50 modern timber tie above purlin

R6: 90mm x 60mm with 70mm furring on top

R7: 100mm x 60mm with 85mm furring on top

R8: 100mm x 60mm with 70mm furring on top with 100 x 50 modern timber tie above purlin.

R9: 95mm x 70mm with 50mm furring on top 120mm x 50mm modern timber tie below purlin.

R10: 100mm x 60mm with 40mm furring.

R11: 100mm x 60mm with 40mm furring.

R12 100mm X 60mm over spine wall and 30mm furring on top.

R13: 95mm x 60mm with 40mm furring on top and 100 x 50 modern timber tie.

R14: 100mm x 60mm original timber, with 50mm furring on top

R15: 100mm x 60mm with 75mm furring on top

R16: 100mm x 60mm with 75mm furring on top with 100 x 50 modern timber tie above purlin level

R17: 95mm x 60mm with 70mm furring on top

R18: 90mm x 60mm with 75mm furring on top.

R19: 100mm x 60mm with 75 mm furring on top

R20: 100mm x 60mm with 60mm furring on top.

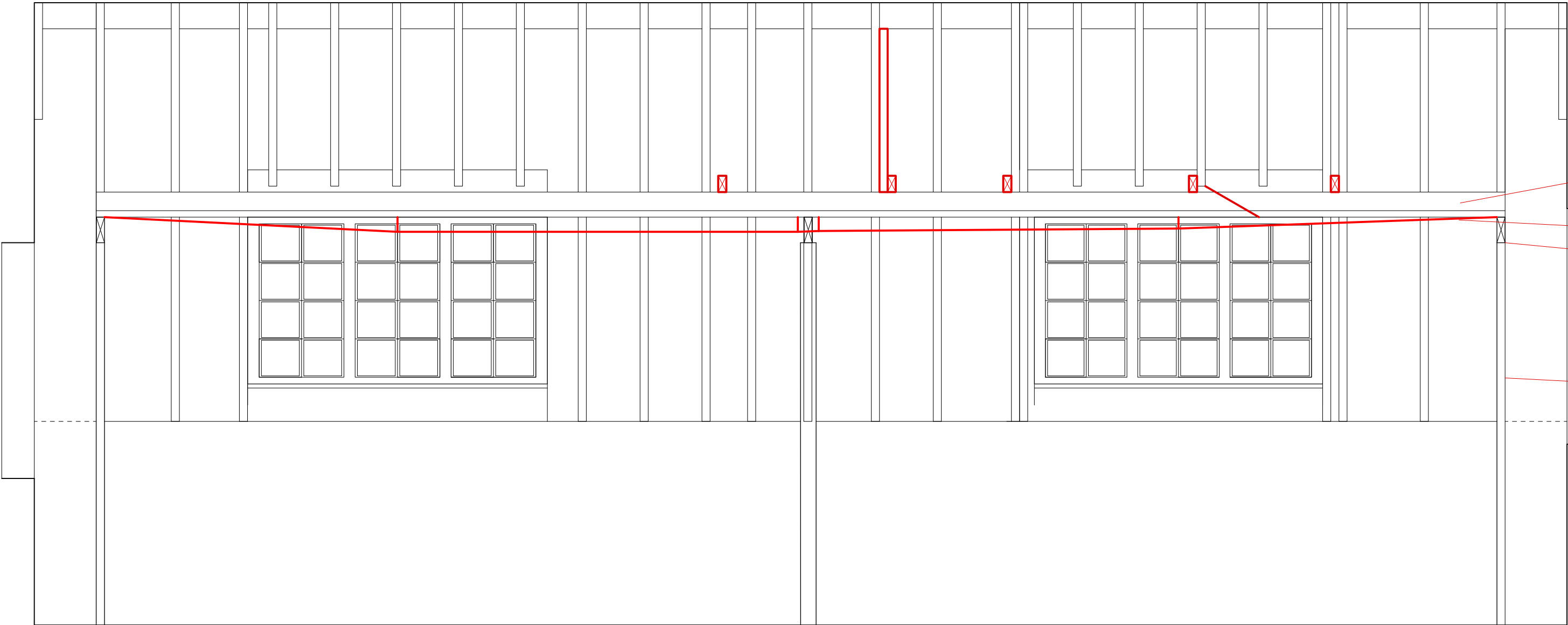
R21: 125mm x 60mm, with 40mm furring on top.

R22: 100mm x 70mm with 25mm furring on top.

R23: 90mm x 70mm with no furring braced into end framing

R24: 100mm x 60mm

R25 R24 R23 R22R21 R19 R18 R17 R16 R15 R14 R13 R12 R11 R10 R9 R8 R7 R6 R5 R4 R3 R2 R1 R0



125mm x 100mm purlin

Line of deformation of underside of purlin

150mm x 60mm horizontal member

95mm x 60mm diagonal brace

51

12 Keats Grove
London NW3 2RN

Kylie Richardson
Project No. 1168 12KG

51 architecture
1a Cobham Mews, Agar Grove, London NW1 9SB
+ 44 [0] 203 355 1205

For Planning
RIBA Stage
**Timber Condition
Survey. Front Elevation**

Scale 1:50 @ A2
Drawn by PT, 2021_02_18

Issue Notes: