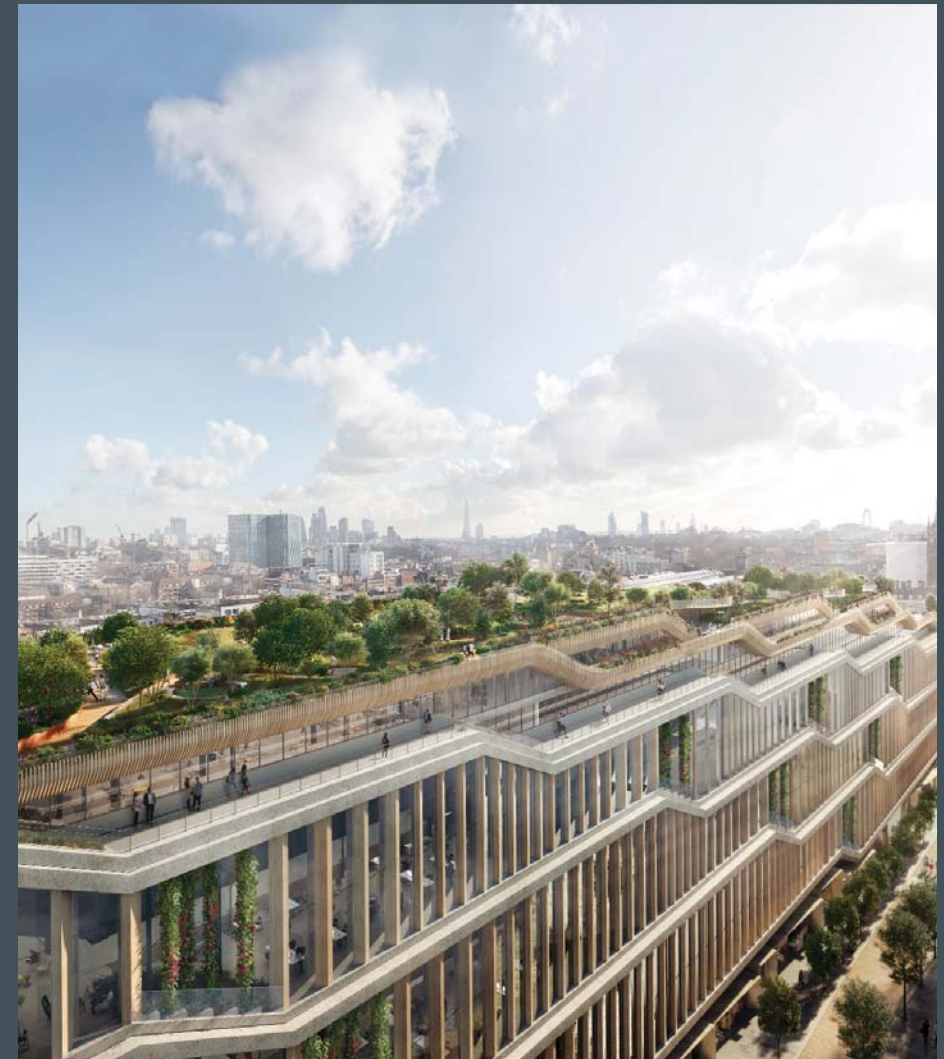


Google KGX1

KGX1 Stage 5 Material Sign Off Presentation - Facades



Date: December 2018
P2007133

BDP.

CONTENTS

1.0 Introduction

2.0 Sample Sign Off Main Facade

- 2.1 Planning boards
- 2.2 Visuals
- 2.3 Timber
- 2.4 Glass
- 2.5 Precast Concrete
- 2.6 Other Materials
- 2.7 Visual Mock-up
- 2.8 Typical Underhang Detail
- 2.9 West Garden Detail

3.0 Sample Sign Off Roof Facade

- 3.1 Planning boards
- 3.2 Visuals
- 3.3 Timber
- 3.4 Glass
- 3.5 Weathered Steel
- 3.6 Steel Grillage
- 3.7 Mesh Balustrade
- 3.8 Perforated Mesh & Mullions
- 3.9 Visual Mock-Up
- 3.10 Lower Timber Tray Detail
- 3.11 3D Roof Landscape

4.0 Confirmation Of Amended Materials

Post Meeting Note:
The meeting held in Susan Storm, 2PS and the site visit to the 1m precast sample on Monday 3rd December 2018 12.30-2pm was attended by:

Edward Jarvis (Camden Council)
Gavin Sexton (Camden Council)
Peter Runacres (Argent)
James Humber (Argent)
Chris Loach (LL)
Elliot Boyd (BDP)
Fiona McKinlay (BDP)
Julia Erdem (BDP)

All samples presented were visually approved by Camden Council.

Further actions:
Submittal of drawings and specifications.

1.0 Introduction

This report has been prepared to present key samples for both the main and roof facades to be used for the Zone A Building (Application 2017/3133/P).

The samples described in this report confirm the materiality of those discussed during both the pre-application process and as presented as part of the approved planning application.

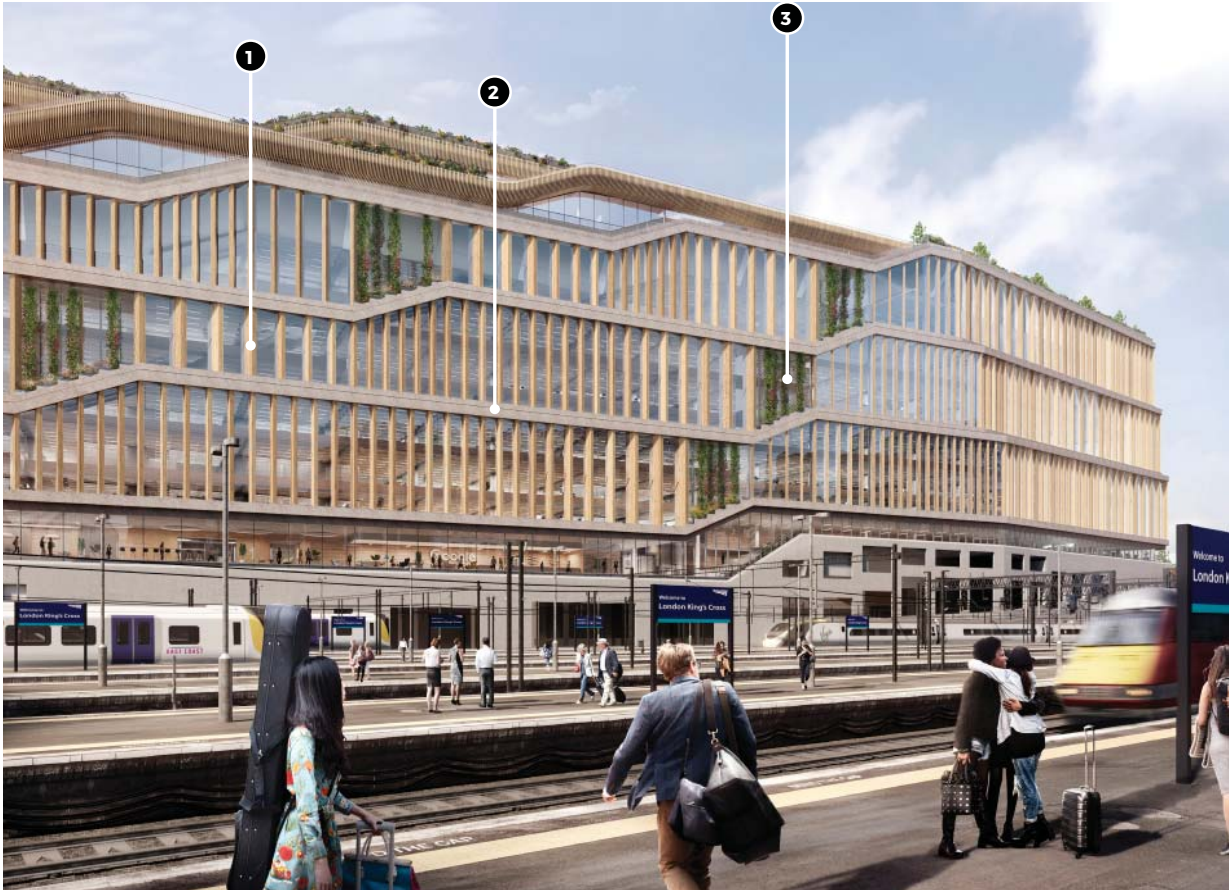
Ref	Planning Condition
PC1	<p>Before the relevant part of the work is begun, detailed drawings, or samples of materials as appropriate, in respect of the following, shall be submitted to and approved in writing by the local planning authority.</p> <p>a) Details including sections at 1:10 of all windows (including jambs, head and cill), ventilation grills, external doors and gates;</p> <p>b) Manufacturer's specification details of all facing materials (to be submitted to the Local Planning Authority) and samples of those materials (to be provided on site).</p> <p>c) Details of the shop front surround, including the junction with the spandrel panel and the mechanical plant louvres at ground floor level (to be submitted to the Local Planning Authority) and samples of those materials (to be provided on site).</p> <p>The relevant part of the works shall be carried out in accordance with the details thus approved and all approved samples shall be retained on site during the course of the works.</p>

These samples relate to (b) in the condition above.

All other items relating to this condition (including the ground floor facade - both retail and east facade) will be submitted prior to the relevant work starting on site.

2.0 Sample Sign Off Main Facade

2.1 Sample Sign Off Main Facade- Planning Boards



The images and samples shown on this page relate to those presented during the planning process and have been included here as a reminder of the approved scheme.



Sample Board Materials

MATERIAL PALETTE

1. TIMBER MULLIONS
The timber mullions are proposed as accoya and will naturally weather over time to a silvery-grey. Timber coating and maintenance requirements are currently being assessed.

2. PRE-CAST CONCRETE
The pre-cast concrete is used at the spandrel areas. We are currently investigating a number of finishes and colour tones with a focus on a light warm grey tone with a textured aggregate.

3. WIRE MESH
The stainless steel wire mesh is used on the east side exterior gardens. It will prevent plant leaves from falling on the rail tracks.

2.2 Sample Sign Off Main Facade- Visuals



East Elevation



West Elevation



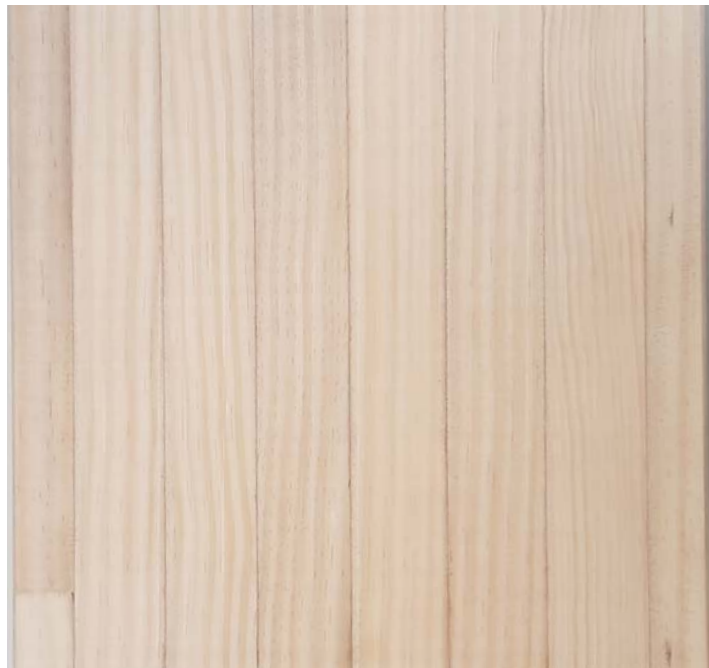
West Elevation- Image 2



South Elevation

The images shown on this page relate to those presented during the planning application process and have been included here as a reminder of the approved scheme.

2.3 Sample Sign Off Main Facade- Timber



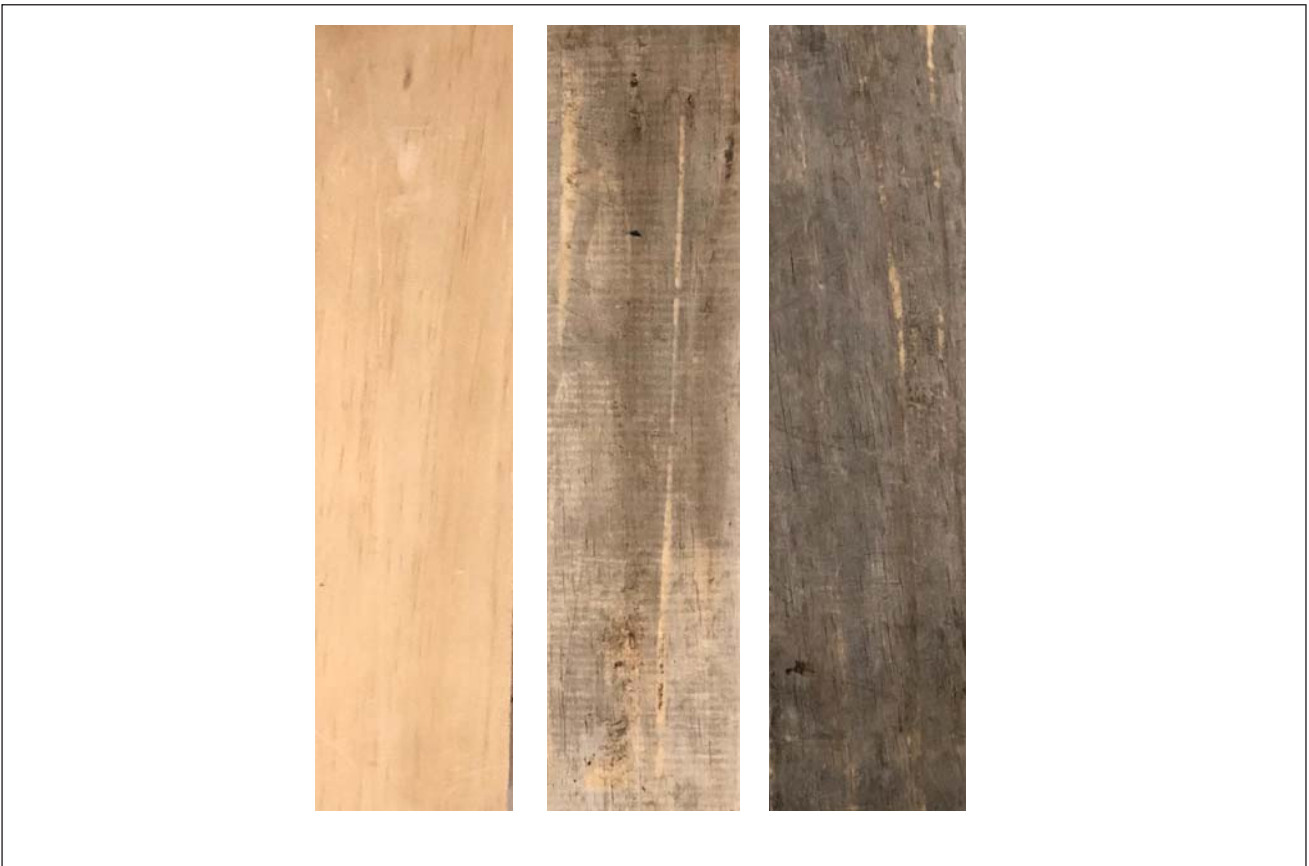
PRODUCT TYPE European Accoya- Glulam
LOCATION Mullion Cladding and Fins (external)
MANUFACTURER -
PRODUCT NAME Accoya
PRODUCT CODE -
FINISH Uncoated

001



PRODUCT TYPE European Larch (visible quality)- Glulam
LOCATION Mullion Cladding and Fins (external)
MANUFACTURER -
PRODUCT NAME European Larch (visible quality)
PRODUCT CODE -
FINISH Coated (tbc)

002



Sample Board Materials

The samples of New Zealand Accoya shown above were presented during the planning approval process and indicate how the timber weathers over a number of months. From left to right: weathering over 0, 12, 24 months.

The above European Accoya (ref 001) has been selected to be used as an external mullion capping.
Internally the timber selected is European Larch (ref 002 above)

Accoya has been selected to be used externally for its:

- **Durability**
- **Sustainability**
- **Maintenance free characteristics**
- **Visual appearance**

2.4 Sample Sign Off Main Facade- Glass



003

PRODUCT TYPE	Glazing
LOCATION	Workplace Floors- all elevations
MANUFACTURER	Interpane
PRODUCT NAME	Ultrasselect 62/29 + Iplus advanced 1.0
PRODUCT CODE	-
FINISH	low iron; black silicone (grey on image)

D Ultrasselect 62/29 + Iplus advanced 1.0 low iron (Interpane) VLT = 54% Rext = 14% g = 0.25 Rin = 17% U=0.54 W/m²K CRI = 91	G Cool-Lite Xtreme 70/33 + Planitherm One low iron (Saint-Gobain) VLT = 55% Rext = 20% g = 0.25 Rin = 25% U=0.51 W/m²K CRI = 93	B Cool-Lite Xtreme 60/28 low iron (Saint-Gobain) VLT = 55% Rext = 17% g = 0.25 Rin = 22% U=0.78 W/m²K CRI = 92	A Cool-Lite Xtreme 60/28 mid iron (Saint-Gobain) VLT = 51% Rext = 16% g = 0.24 Rin = 21% U=0.78 W/m²K CRI = 88	I (6PS reference) Ipasol Neutral 70/29 low iron (Interpane) VLT = 72% Rext=13% g = 0.40 Rin = 15% U=1.0 W/m²K CRI = 96
--	---	---	---	---

Various types of glass were reviewed as indicated here - the final approved sample is highlighted (ref 003 above).



- Optimising performance and visual appearance

2.5 Sample Sign Off Main Facade- Precast Concrete



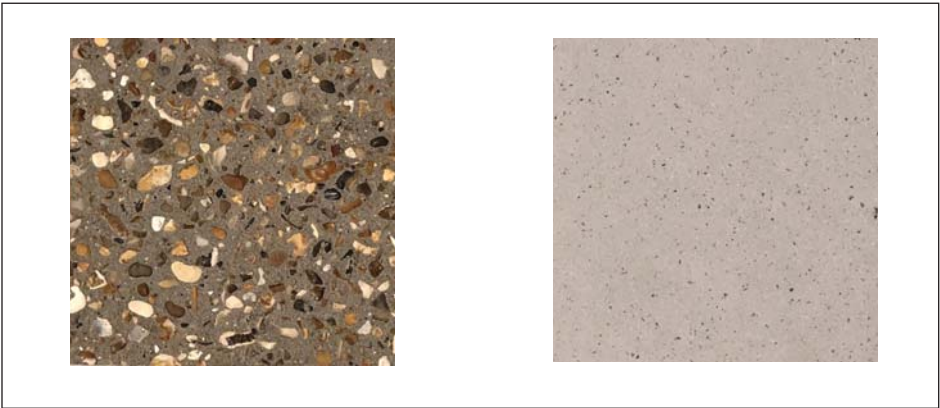
004

PRODUCT TYPE Precast concrete (exposed aggregates)
LOCATION Precast concrete spandrels (vertical surfaces and ground floor soffit)
MANUFACTURER Explore
PRODUCT NAME tbc by GTR
PRODUCT CODE -
FINISH blasted to expose aggregates



005

PRODUCT TYPE Precast concrete (smooth)
LOCATION Precast concrete spandrels (horizontal surfaces except GF soffit)
MANUFACTURER Explore
PRODUCT NAME tbc by GTR
PRODUCT CODE -
FINISH Light sandblast



The two samples above show the exposed aggregate and smooth finish to the precast concrete spandrels. (ref 004, 005).
Photograph (top right) shows the mock up sample manufactured to the above specifications. The smaller samples on the right of the image show the comparison to the sample board concrete presented during the planning application process.

The concrete samples indicated on the sample board above shown relate to those presented during the planning process and have been included here as a reminder of the approved scheme.

Sample Board Materials

2.6 Sample Sign Off Main Facade - Other Materials



PRODUCT TYPE
LOCATION

MANUFACTURER
PRODUCT NAME
PRODUCT CODE
FINISH

Anodized Aluminium
Glass Captures, Handrails, Skirtings,
External Garden Soffits etc.
GTR
tbc by GTR
-
Natural Anodized

006



PRODUCT TYPE
LOCATION

MANUFACTURER
PRODUCT NAME
PRODUCT CODE
FINISH

Jakob Mesh
East Facade Gardens
Jakob
Jakob Webnet
-
Stainless Steel

007

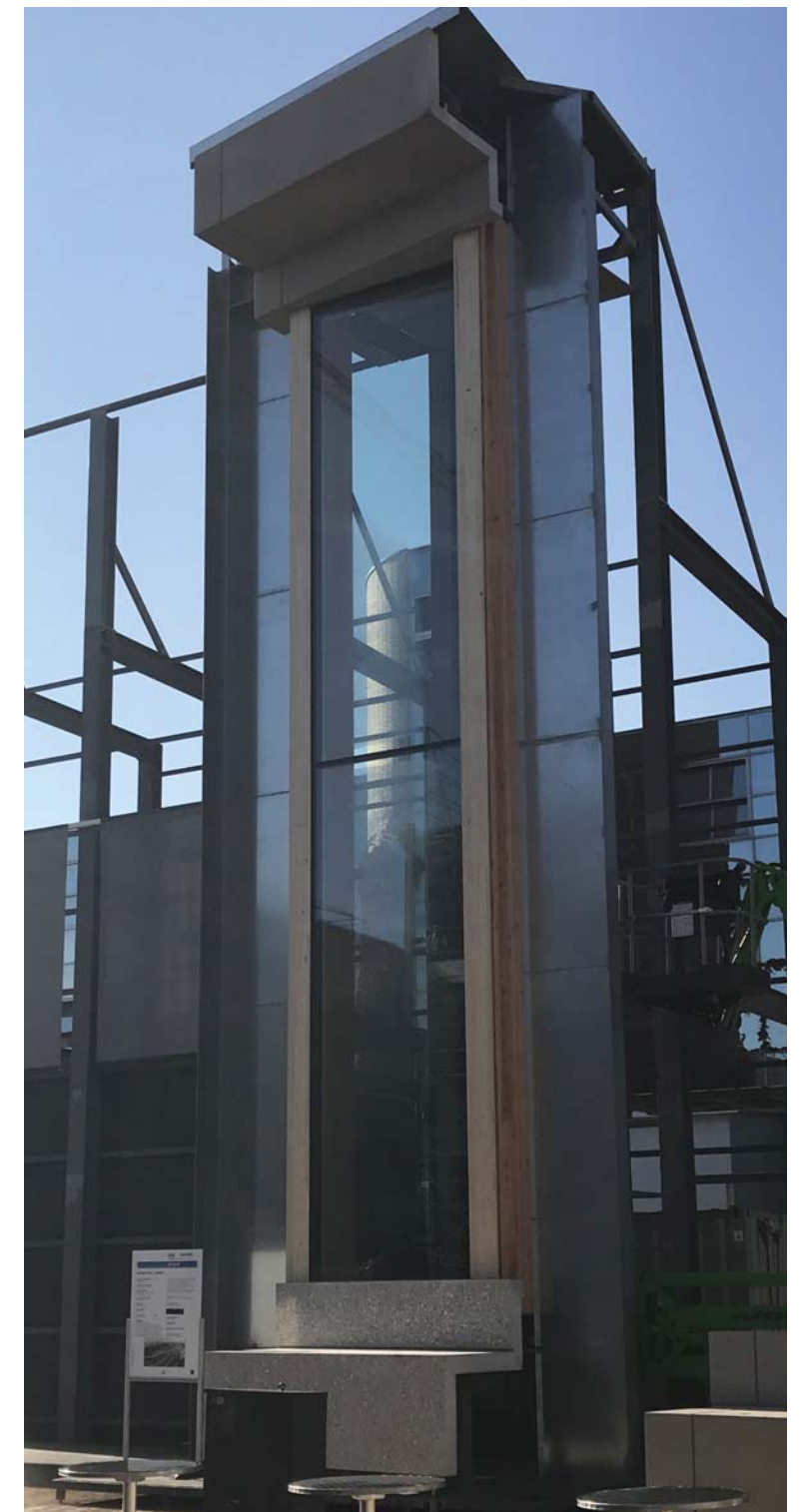


Sample Board Materials

The two material samples above - anodized aluminium (ref 006) and 'Jakob' Mesh (ref 007) were presented as material samples to be used on various secondary elements on the workplace facade (handrails, soffits etc as indicated).

The mesh sample indicated on the sample board above and image of an east facade external garden were as presented during the planning process and have been included here as a reminder of the approved scheme.

2.7 Sample Sign Off Main Facade- Visual Mock-up



The photographs above show one of the visual mock ups being built in Germany.

2.8 Sample Sign Off Main Facade- Typical Underhang Detail

Key material references have been indicated on the contractor drawing below:

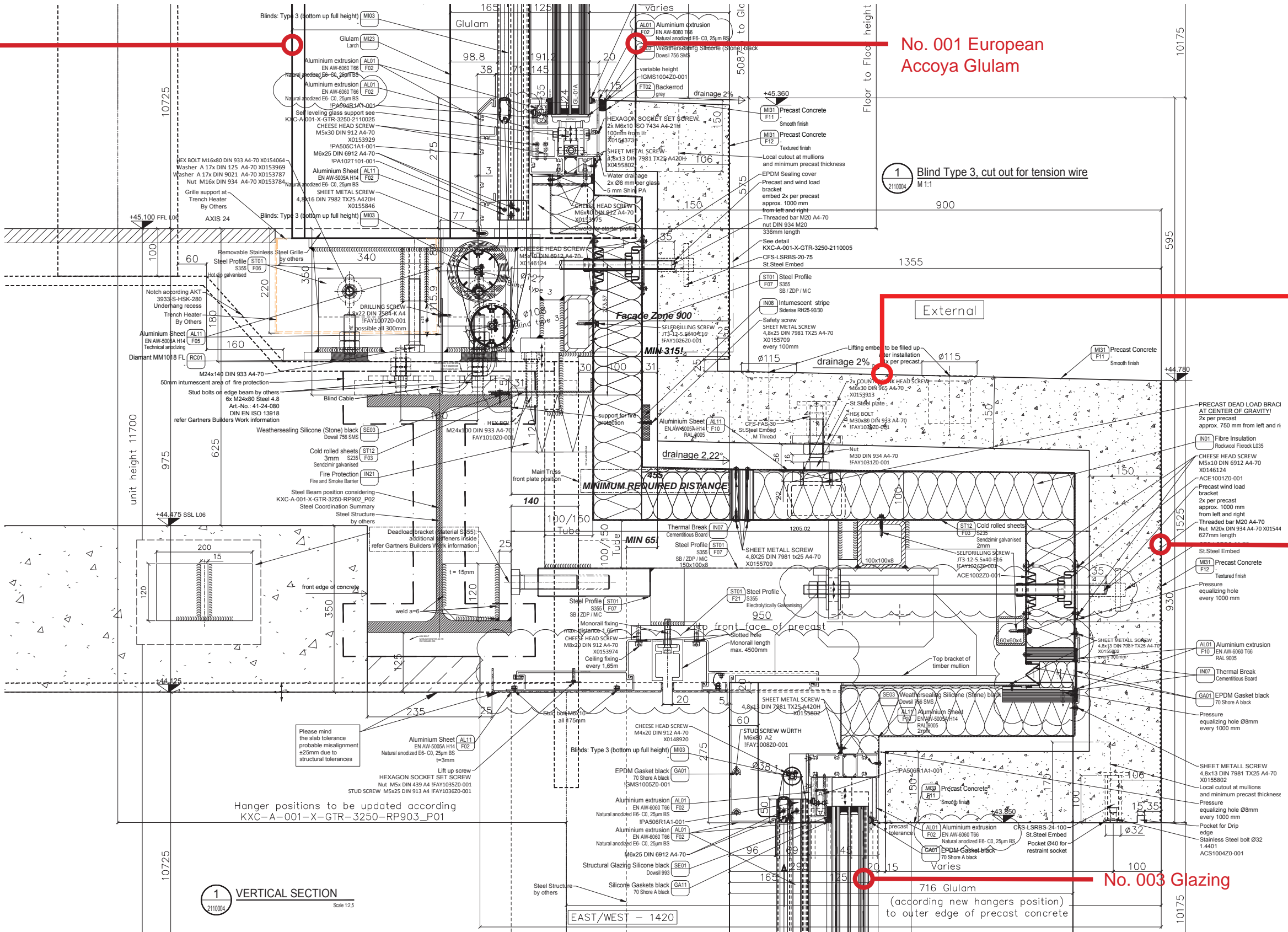
No. 002 European
Larch Glulam

No. 001 European
Accoya Glulam

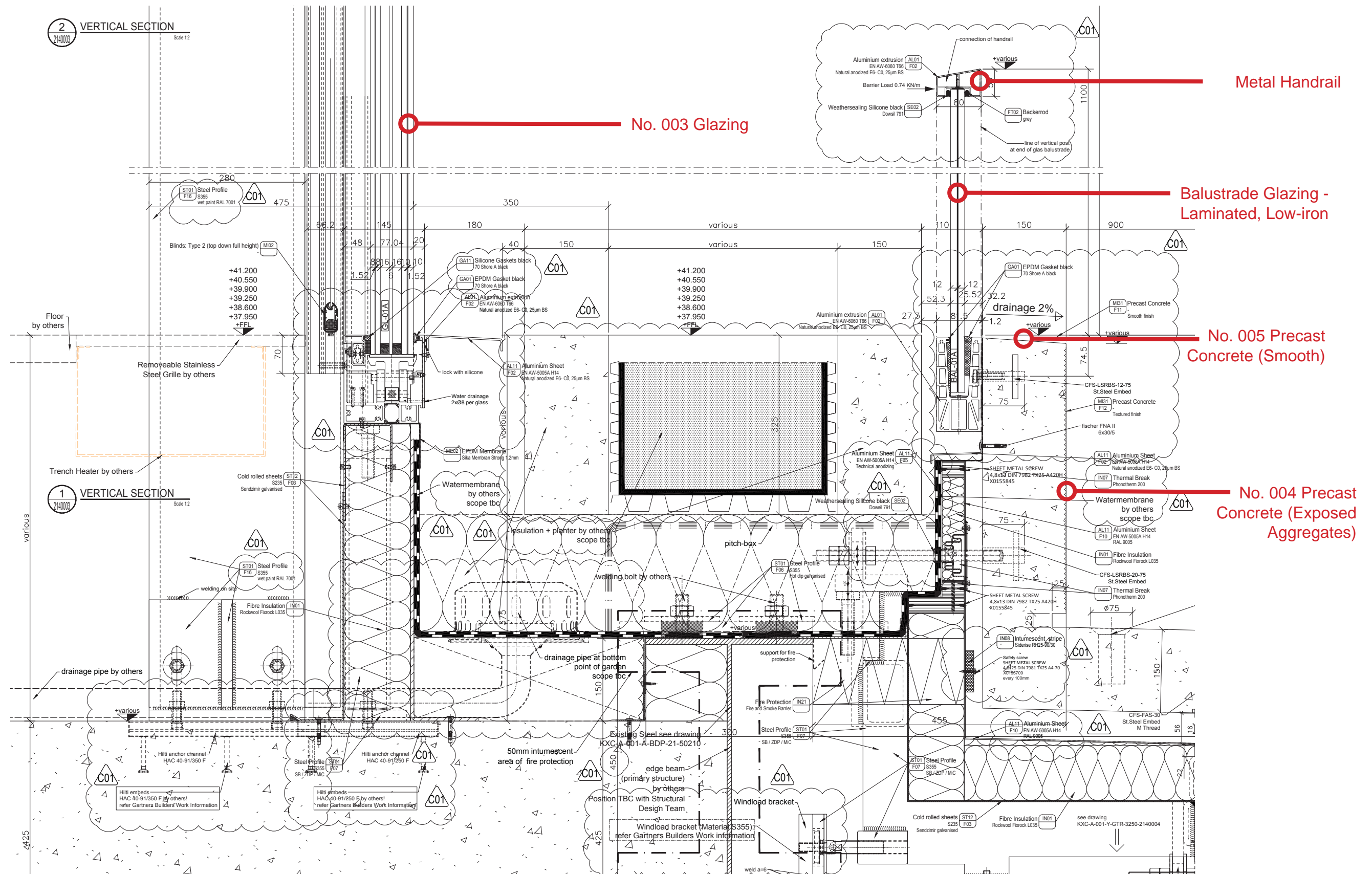
No. 005 Precast
Concrete (Smooth)

No. 004 Precast
Concrete (Exposed
Aggregates)

No. 003 Glazing



Key material references have been indicated on the contractor drawing below:



3.0 Sample Sign Off Roof Facade

3.1 Sample Sign Off Roof Facade- Planning Boards



The images and samples shown on this page relate to those presented during the planning process and have been included here as a reminder of the approved scheme.



UK LARCH TIMBER CLADDING



TIMBER DECKING



WEATHERED STEEL



STEEL DECKING

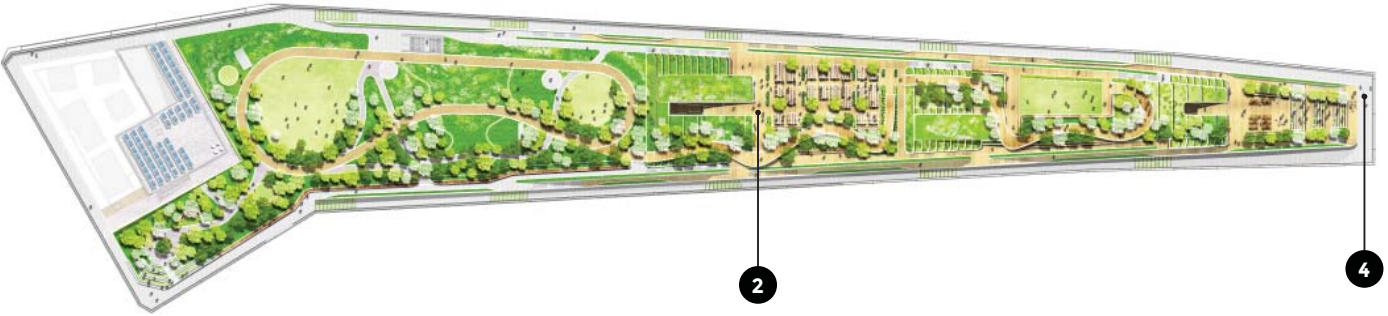


WIRE MESH BALUSTRADE

Sample Board Materials

- 1. UK LARCH TIMBER CLADDING**
Timber facade slats 90mm side with a 90mm gap between with a black insect mesh backing.
- 2. TIMBER DECKING**
Antislip timber hardscaping within the roof landscape creates welcoming environment.

- 3. WEATHERED STEEL**
Weathering steel planter edges, naturally protected by their rust coating.
- 4. STEEL DECKING**
Steel decking at warehouse level allows MEP intake and exhaust to be concealed from the street.
- 5. WIRE MESH BALUSTRADE**
Delicate transparent wire mesh balustrades allow views to and from the green roof.



3.2 Sample Sign Off Roof Facade- Visuals



The images shown on this page relate to those presented during the planning process and have been included here as a reminder of the approved scheme.

3.3 Sample Sign Off Roof Facade- Timber



PRODUCT TYPE	Solid European Accoya
LOCATION	Timber trays (external)
MANUFACTURER	Gamiz
PRODUCT NAME	Accoya
PRODUCT CODE	-
FINISH	Uncoated (except for end grains)

001



Sample Board Materials Larch Timber Cladding

The sample of Larch cladding shown above was presented during the planning approval process.



The above European Accoya (ref 001) has been selected to be used on the timber trays. This is now in keeping with the main workplace facade mullions. Previously (as indicated in the planning application and shown to the left), larch cladding was proposed for these elements.

- **Aesthetic:** European Accoya continues the aesthetic of the Main Facade mullions and will weather naturally to a silver grey
- **Durability:** Design life of 30+ years

3.4 Sample Sign Off Roof Facade- Glass



PRODUCT TYPE
LOCATION
MANUFACTURER
PRODUCT NAME
PRODUCT CODE
FINISH

Glass to Roof Facade
Roof Facade
Guardian
SunGuard SNX 50HT
G-Value 0.23

002

- Mid and low iron options for both glass types evaluated, however no differences noted
- GRC and Timber Upstands removed and replaced with full height glazing to maximise the light into the roof accommodation.
- Visually light in appearance

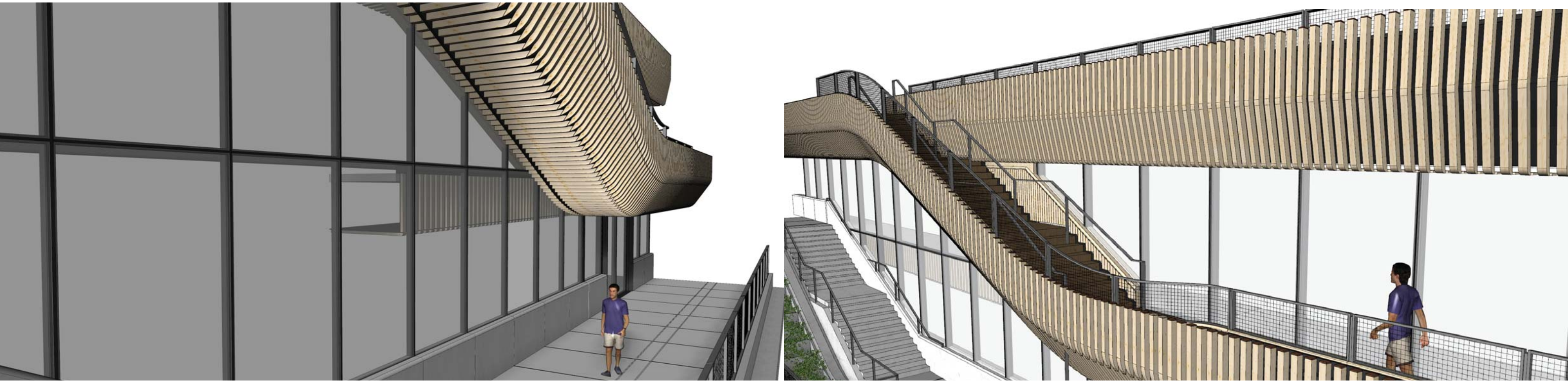
Sunguard Guardian: Mid & Low Iron

Saint Gobain Coolite SKN 154 II with Planitherm One: Mid & Low Iron



Various types of glass were reviewed as indicated to here - the final approved sample is highlighted (ref 002 above).

3.2 Sample Sign Off Roof Facade- GRC & Timber Upstands



Upstand included for Planning application



The images above show how the roof plane has developed - note the omission of upstand, now replaced with full height glazing.

3.5 Sample Sign Off Roof Facade- Weathering Steel



PRODUCT TYPE	Weathered Steel	003
LOCATION	Landscape Stores on Roof Landscape	
MANUFACTURER	-	
PRODUCT NAME	-	
PRODUCT CODE	-	

- Naturally rust coating
- Aesthetically homogenous with landscaped roof and planter edges



Sample Board Materials

The above weathered steel sample (ref 003) is consistent to that presented during the planning process.

The sample of weathered steel shown above was presented during the planning approval process.



The image above shows the roof plane as illustrated for the planning application

3.6 Sample Sign Off Roof Facade- Metal Grillage



PRODUCT TYPE	Grillage 44mm x 11mm
LOCATION	BMU Level
MANUFACTURER	Company Lichtgitter
PRODUCT NAME	-
PRODUCT CODE	-
FINISH	Mild steel hot-dip galvanised

004



The above grillage (ref 004) is consistent to that presented during the planning process.

- **Functionality:** Galvanised grillage to BMU areas allows MEP intake and exhaust to be concealed from the street
- **Durable material** which is aesthetically pleasing

3.7 Sample Sign Off Roof Facade- Mesh Balustrade



PRODUCT TYPE	Stainless steel mesh	005
LOCATION	Infill to balustrades on Roof	
MANUFACTURER	-	
PRODUCT NAME	-	
PRODUCT CODE	-	
FINISH	Point Welded Stainless steel, size 40x40 x4mm	



PRODUCT TYPE	Aluminium Frame Profile	006
LOCATION	Balustrades in Timber Tray	
MANUFACTURER	Alucolor	
PRODUCT NAME	ELO E6/C0	
PRODUCT CODE	-	
FINISH	Anodised	

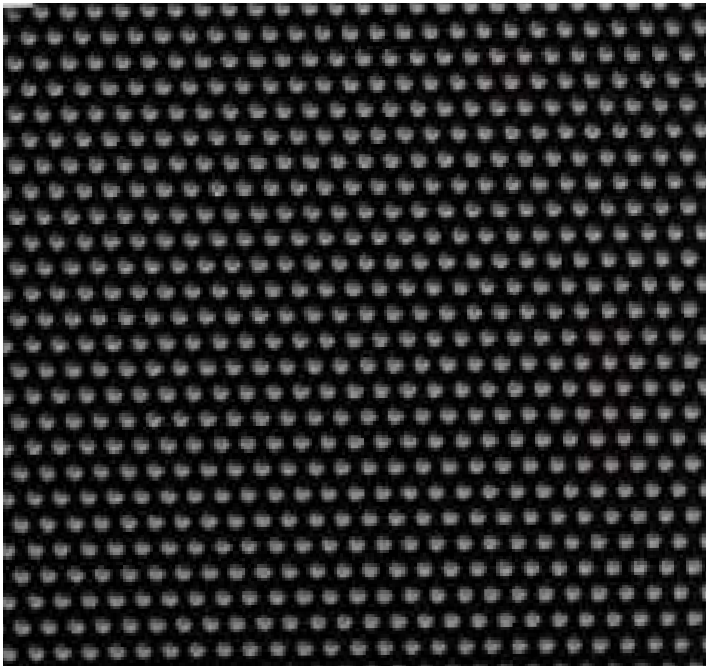


Sample Board Materials

- Revised stainless steel mesh balustrade infill:**
- **Balustrade mesh allows views to and from the green roof. Maintains a very transparent and light appearance.**
 - **40 x 40 x 4mm stainless steel mesh continuous along ribbons of timber cladding**

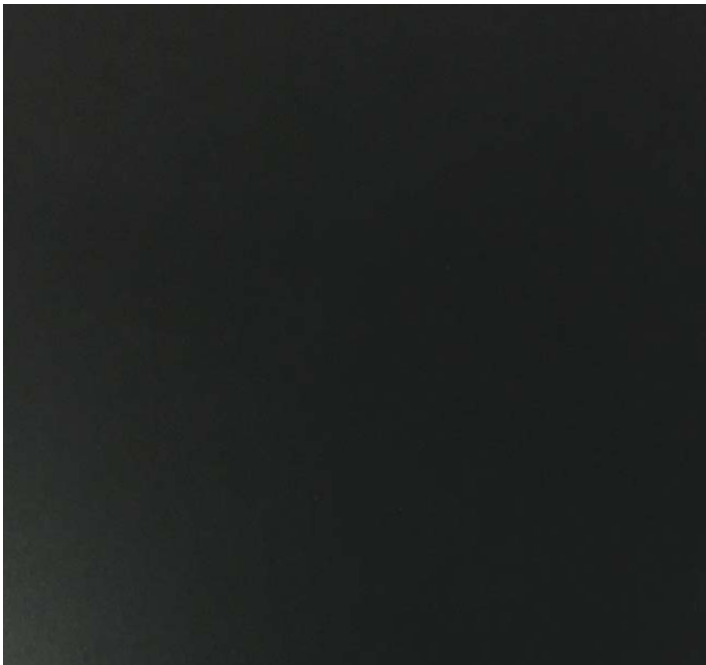
The above stainless steel mesh (ref 005) replaces the ‘Jakob’ mesh infill to the roof balustrades.
Balustrade handrail and frames are in aluminium (ref 006).

3.8 Sample Sign Off Roof Facade- Perforated Mesh & Curtain Walling Mullions



007

PRODUCT TYPE	Perforated Aluminium Sheet 2mm
LOCATION	Timber Trays (external)
MANUFACTURER	Klockner
PRODUCT NAME	-
PRODUCT CODE	-
FINISH	Black



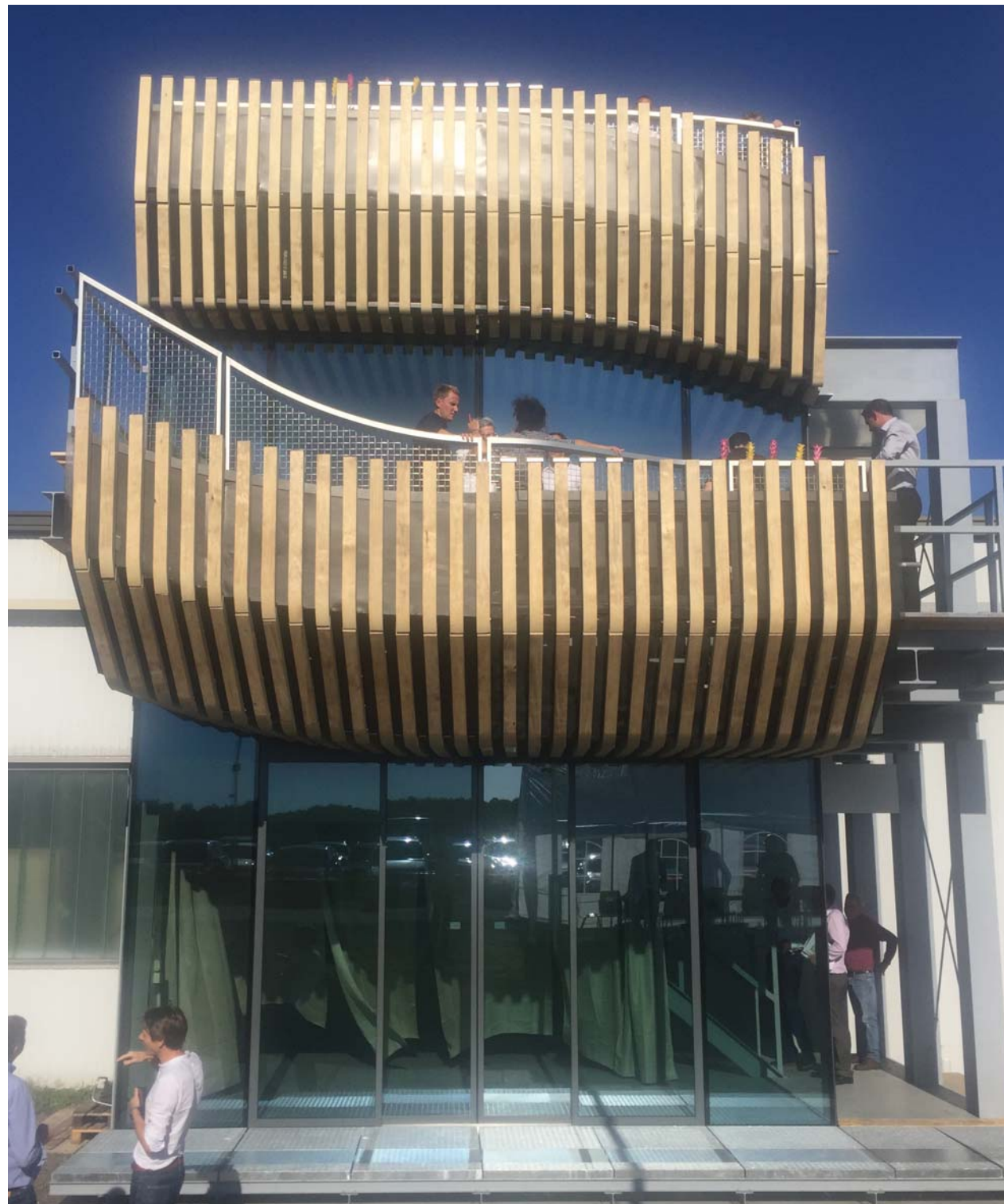
008

PRODUCT TYPE	Colour Sample RAL 7016
LOCATION	Mullions Roof Facade
MANUFACTURER	Alucolor
PRODUCT NAME	Aluminium
PRODUCT CODE	-
FINISH	PPC RAL 7016 Gloss Level 30%

- Perforated aluminium mesh improves aesthetic and durability. Reduced reflectivity of surface maintains a smooth continuous appearance behind the timber tray.
- RAL 7016 colour selected for the mullions and transoms and doors at the VMU visit.

The above perforated black aluminium sheet (ref 007) sits behind the timber battens, acting as an insect mesh.
Aluminium mullions to the roof facade - RAL colour as presented (ref 008)

3.9 Sample Sign Off Roof Facade- Visual Mock-up



The photographs above show a mock up section of the timber roof trays, balustrade and full height glazing being built in Germany.

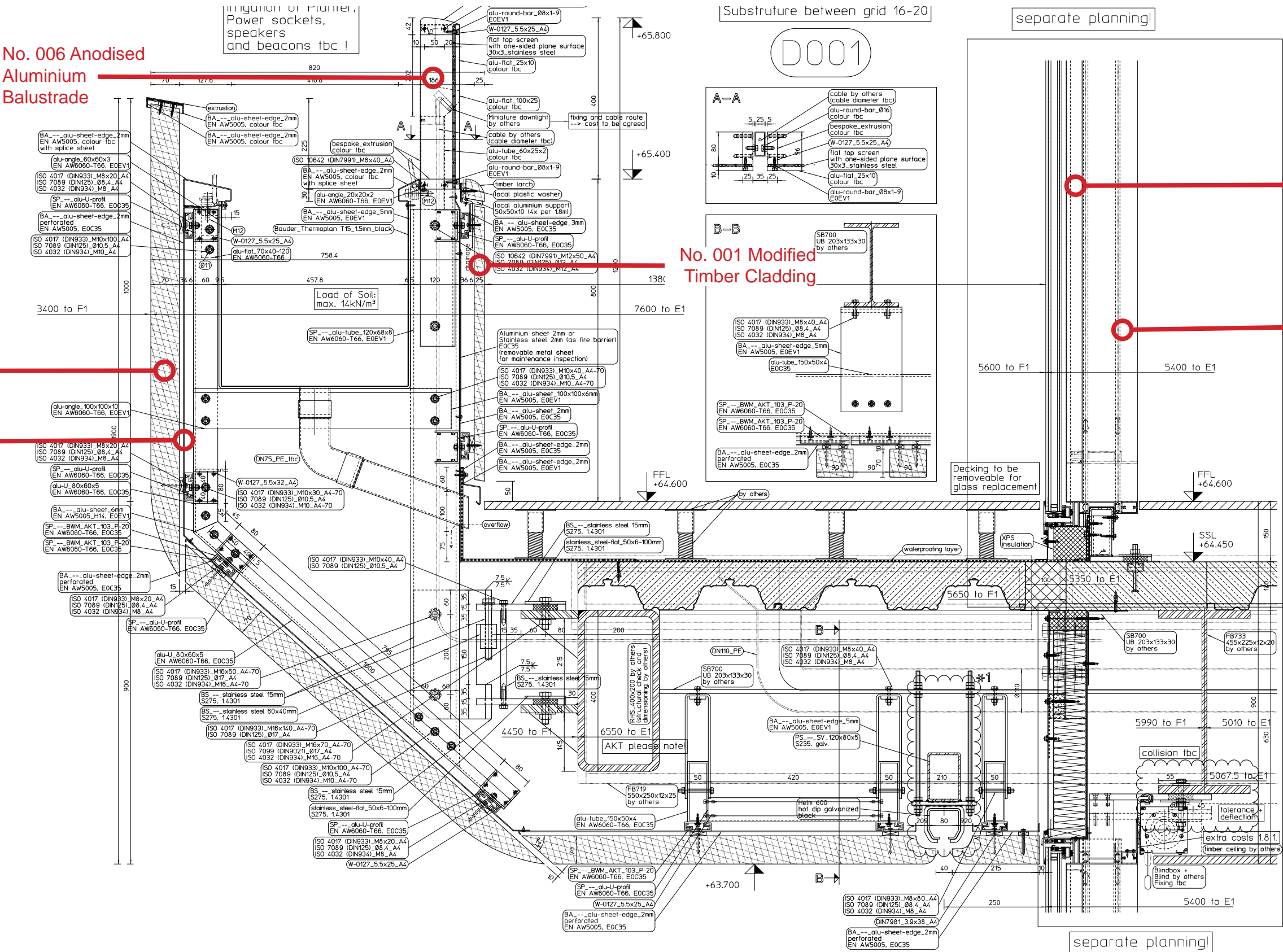
3.10 Sample Sign Off Roof Facade- Lower Timber Tray Detail

Key material references have been indicated on the contractor drawing below:

No. 006 Anodised Aluminium Balustrade

No. 001 Modified Timber

No. 007 2mm Black Perforated Aluminium Sheet



No. 002 Glass

No. 008 PPC Aluminium Mullions

separate planning!

3.11 Sample Sign Off Roof Facade- 3D Roof Landscape Visual

The image below shows the roof facade in context as illustrated for the planning application.



4.0 Confirmation Of Amended Materials

- 1. Roof Trays - Timber (larch to modified timber) to align with main facade external timber
- 2. Roof Trays - Mesh to balustrade (webnet to rigid mesh)
- 3. Roof Facade - upstand removal
- 4. Splayer 4 - Mesh balustrade to glass/ metal balustrade to align with main facade balustrade materials
- 5. Timber mullion - sacrificial layer to external (internal larch, external modified timber)

