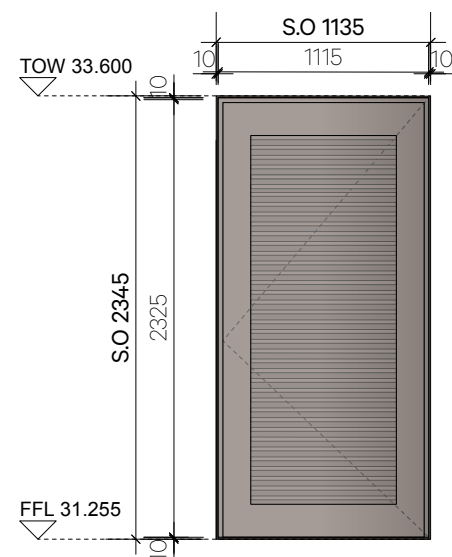


Door Type EXD-01

Location: Main Residential Entrance
Fire Rating: None
Security Rating: PAS24 2016
Access: Key Fob & Access Control Panel
Quantity: 1



Door Type EXD-02

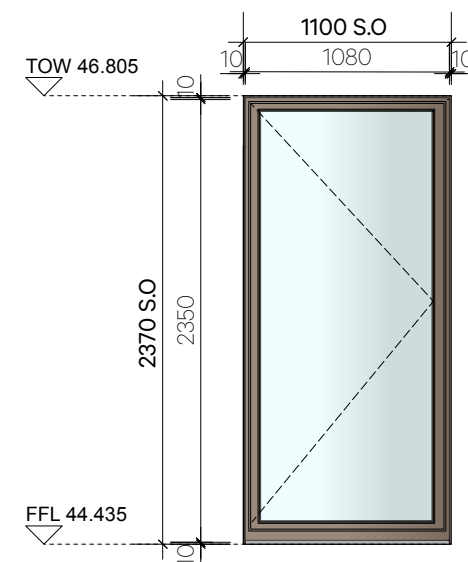
Location: Commerical Bin Store Door

Fire Rating: None

Security Rating: SR2

Access: Fob with Maglock (TBC)

Quantity: 1



Door Type EXD-03

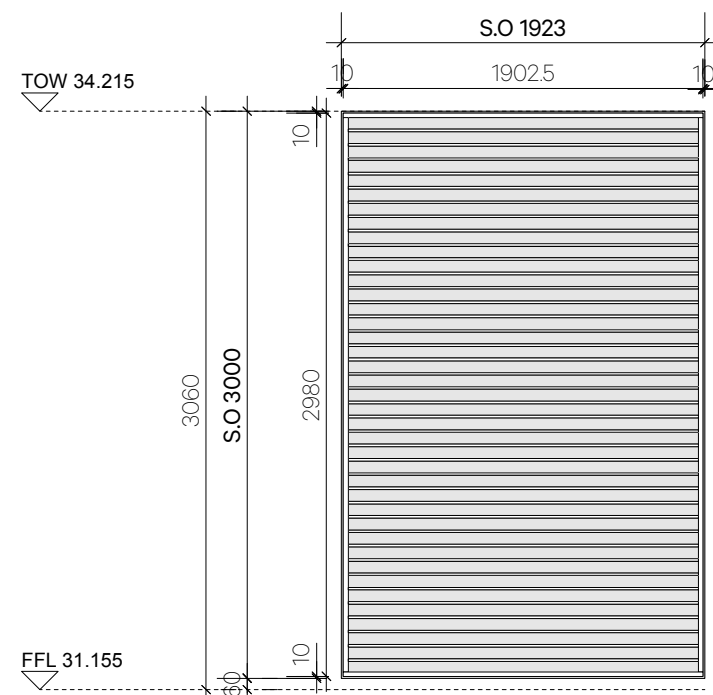
Location: Fourth Floor Communal Terrace Entrance

Fire Rating: None

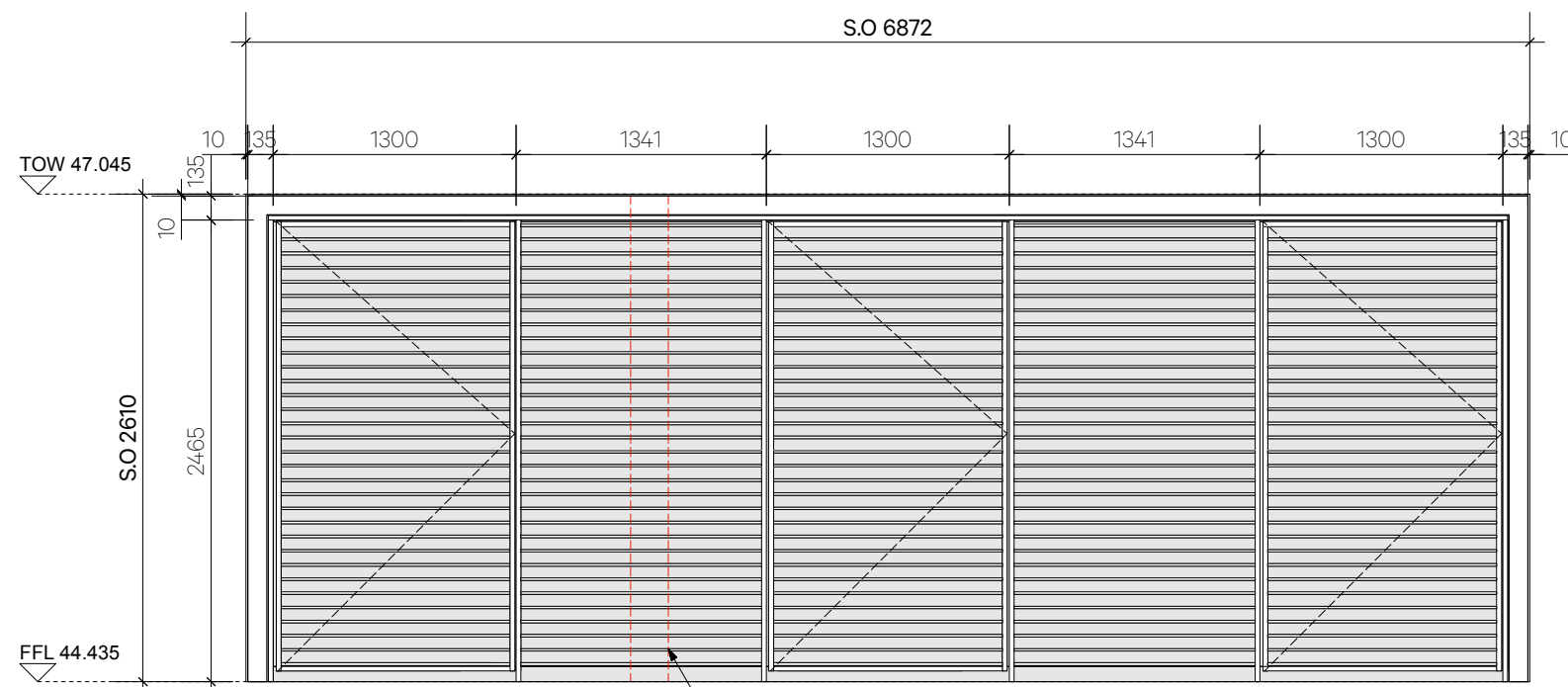
Security Rating: PAS24 2016


Access: Fob with Maglock (TBC)

Quantity: 1



○ Louvre Type 01
Location: Commerical Plant Room
Quantity: 1



 Louvre Type 02
 Location: Plant Room on Fourth Floor Communal Terrace
 Quantity: 1

Part M4(3)

Paragraph 3.14-n states

'Door entry controls, where provided, are mounted 900-1000mm above finished ground level a minimum of 300mm away from any projecting corner.'

Applicable Doors
EXD-01, EXD-02 & EXD-03.

Revision	Date	Amendment	Notes
T1	05/06/2020	Tender Issue	

Client Project Drawing	Vabel Limited Haverstock Hill External Door and Louvre Schedule	
Scale Date	<div> <div>1:20 @ A1 & 1:40 @ A3</div> <div>April 2020</div> </div> <div>Drawn SM</div>	
Project N° 864	Drawing N° 864_C_1020	Revision T1

Unit 0.01
California Building
London SE13 7SF
+44 (0) 2083 056010

NO DIMENSIONS ARE TO BE SCALED FROM THIS DRAWING. THE CONTRACTOR/MANUFACTURER IS RESPONSIBLE FOR CHECKING ALL DIMENSIONS AND QUERING ANY DISCREPANCIES. THIS DRAWING IS THE PROPERTY OF BURWELL ARCHITECTS LTD. COPYRIGHT IS RESERVED BY THEM AND THE DRAWING IS ISSUED ON CONDITION THAT IT IS NOT COPIED, REPRODUCED, RETAINED OR DISCLOSED TO ANY UNAUTHORISED PERSON, EITHER WHOLLY OR IN PART, WITHOUT WRITTEN CONSENT.