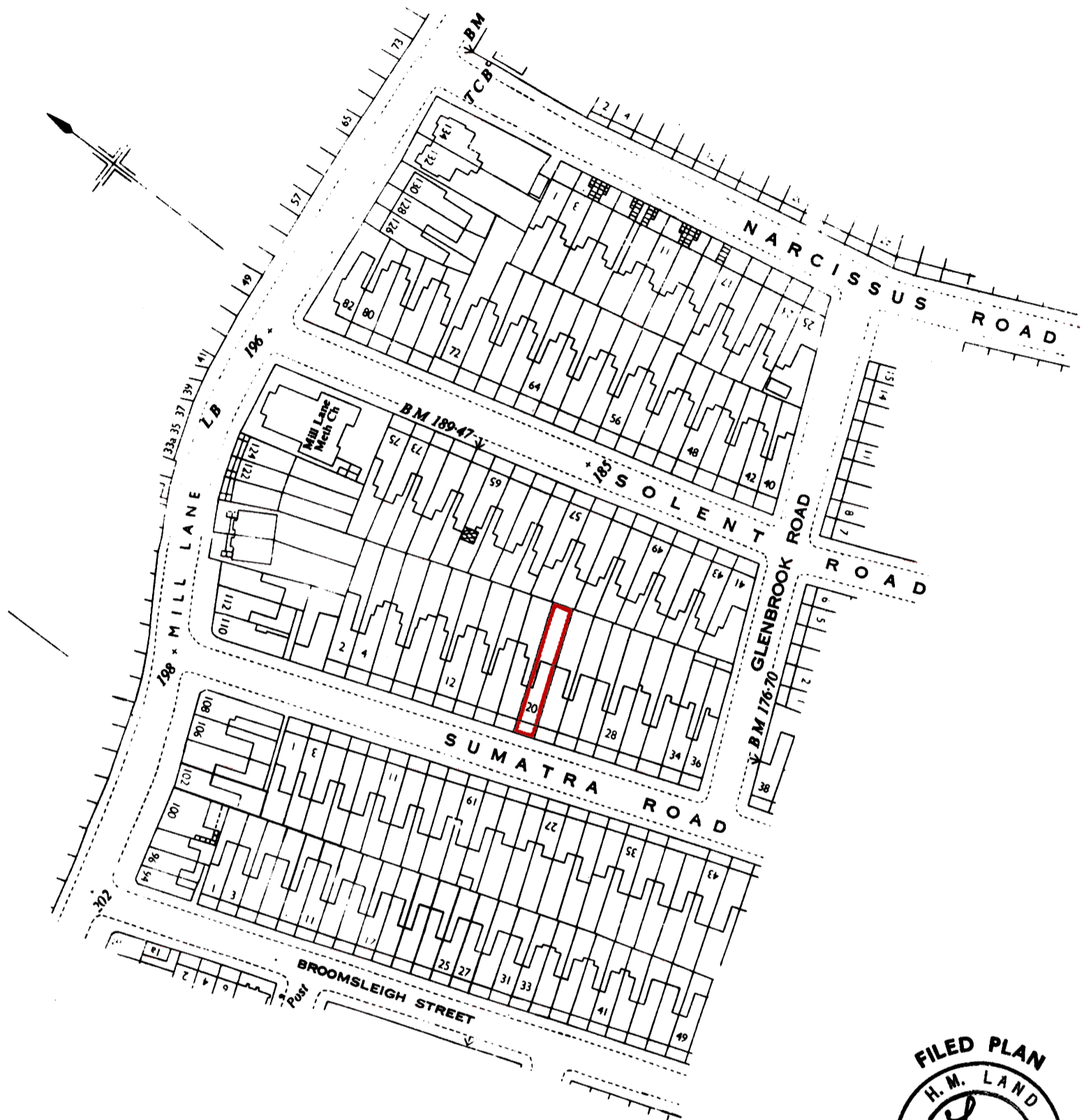


H.M. LAND REGISTRY		TITLE NUMBER	
		431950	
ORDNANCE SURVEY PLAN REFERENCE	COUNTY	SHEET	NATIONAL GRID
	GREATER LONDON		TQ 2585
			SECTION W
Scale: 1/1250		© Crown copyright 1971.	

BOROUGH OF CAMDEN

Old Reference LN VI 8 B



TQ 2585 SW
TQ 2485 SE



This is a copy of the title plan on 3 MAR 2021 at 15:23:31. This copy does not take account of any application made after that time even if still pending in HM Land Registry when this copy was issued.

This copy is not an 'Official Copy' of the title plan. An official copy of the title plan is admissible in evidence in a court to the same extent as the original. A person is entitled to be indemnified by the registrar if he or she suffers loss by reason of a mistake in an official copy. If you want to obtain an official copy, the HM Land Registry web site explains how to do this.

HM Land Registry endeavours to maintain high quality and scale accuracy of title plan images. The quality and accuracy of any print will depend on your printer, your computer and its print settings. This title plan shows the general position, not the exact line, of the boundaries. It may be subject to distortions in scale. Measurements scaled from this plan may not match measurements between the same points on the ground.

This title is dealt with by HM Land Registry, Croydon Office.

© Crown Copyright. Produced by HM Land Registry. Further reproduction in whole or in part is prohibited without the prior written permission of Ordnance Survey. Licence Number 100026316.