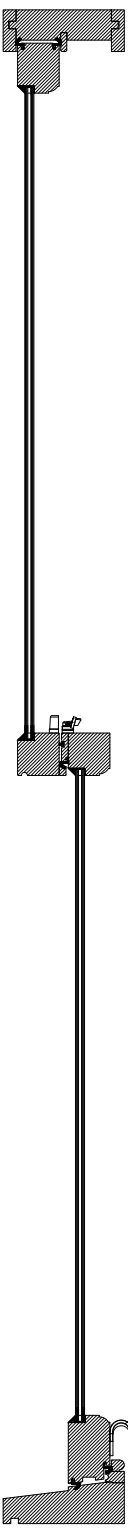
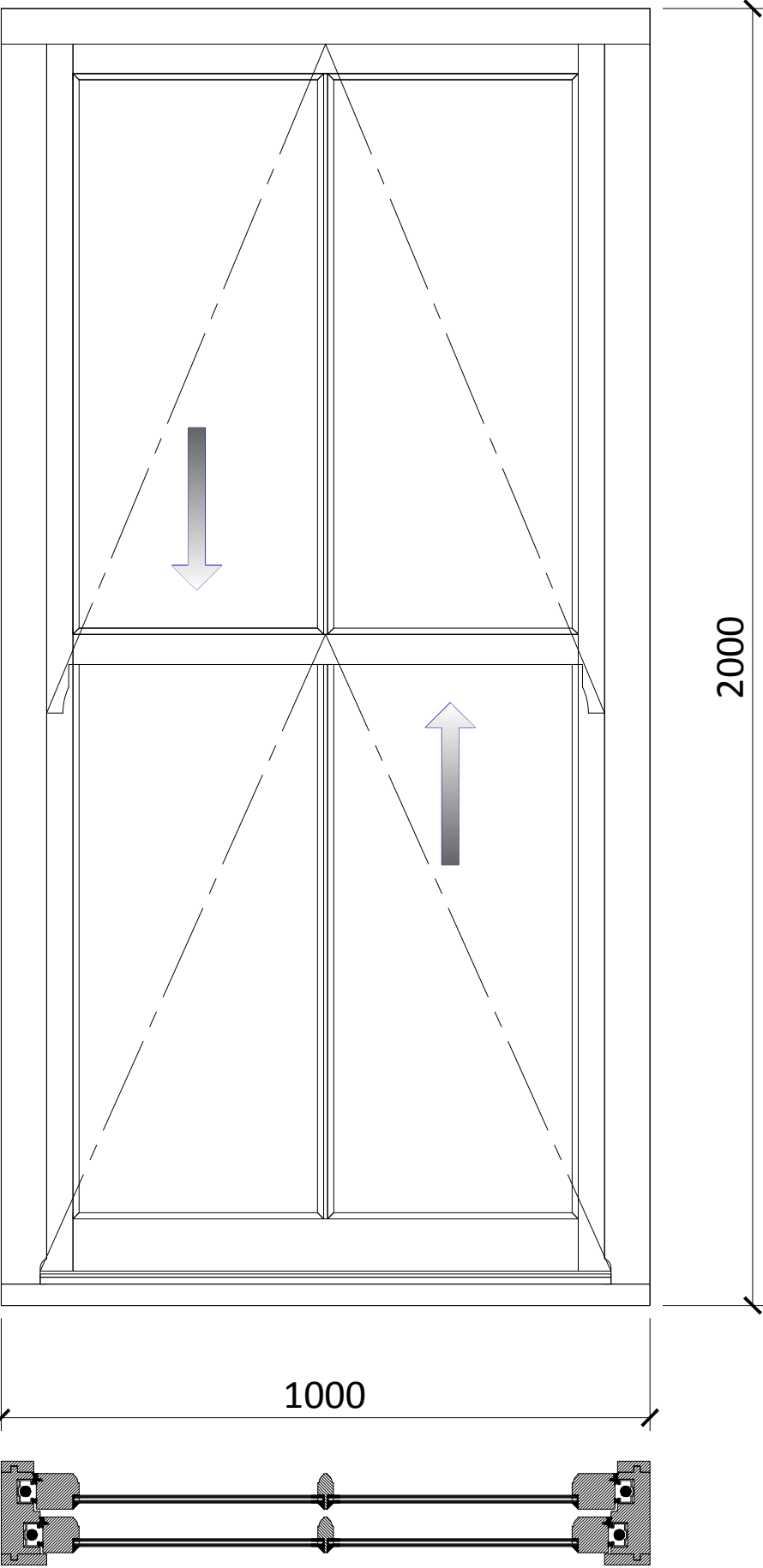
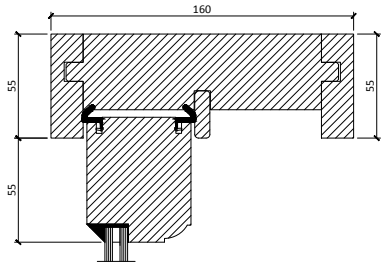


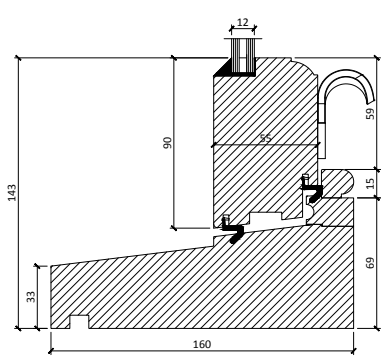
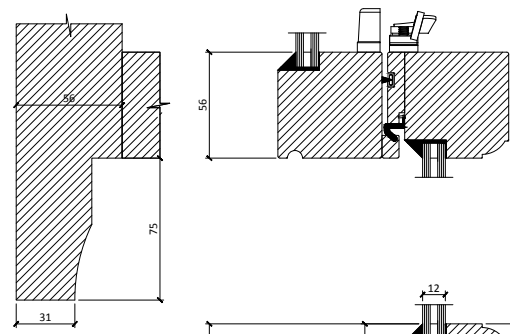
Elevation drawing
Scale 1 : 10 @ A3



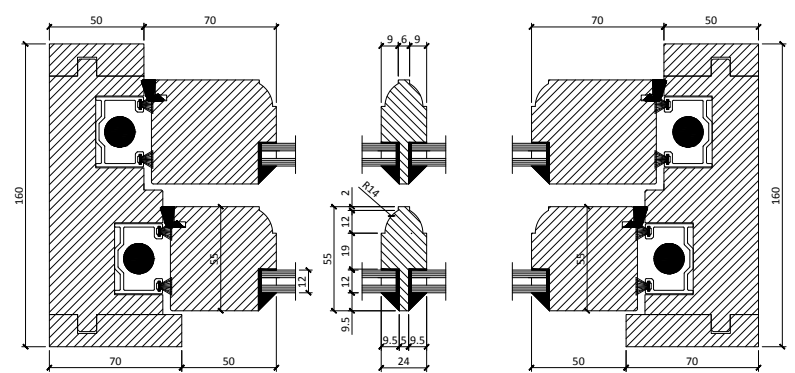
Vertical Section
Scale 1 : 4 @ A3



Top sash horn detail (H1)



Horizontal Section
Scale 1 : 4 @ A3



PROJECT	
PETER SAMUEL	
TITLE	
Proposed Window	
DRAWING No.	REVISION
TRC-PS-(1)001	1
DATE	SCALE
2021/03/09	@ A3

STATUS

PRELIMINARY

- CONSTRUCTION DETAILS
- View from outside
 - Sash window with spiral balances and tilt facility
 - Timber Engineered Finger jointed Pine (cill from hardwood sapeli)
 - Internal Timber finish RAL 9016
 - External Timber finish RAL 9016
 - Ironmongery:
 - Caldwell Timb-A-Tilt hardware,
 - Spiral balances (finish White),
 - 2 x Traditional locking restrictor to Top sash
 - 1 x Locking Fitch Fastener,
 - 2 x Curled finger lifts to Bottom sash (finish Satin Chrome)
 - Sash tilt latches to top sash (finish White);
 - Sash tilt latches to bottom sash (finish Brushed Steel)
 - Glass unit:
 - 4mm clear /
 - 4mm white spacer+Kr/
 - 4mm Pilkington K glass
 - Toughened glass to bottom sash
 - Glass sealing:
 - White heritage putty glazing compound
 - Sash sealing:
 - White gasket

TRC CONTRACTS Ltd
Knoll House, Union Wharf,
Market Harborough,
Leicestershire LE16 7UW
Tel: +44 (0)1858 469 225
Fax: +44 (0)1858 469 249
www.trcwindows.co.uk



TRC ARE AN ISO 9001 REGISTERED COMPANY

