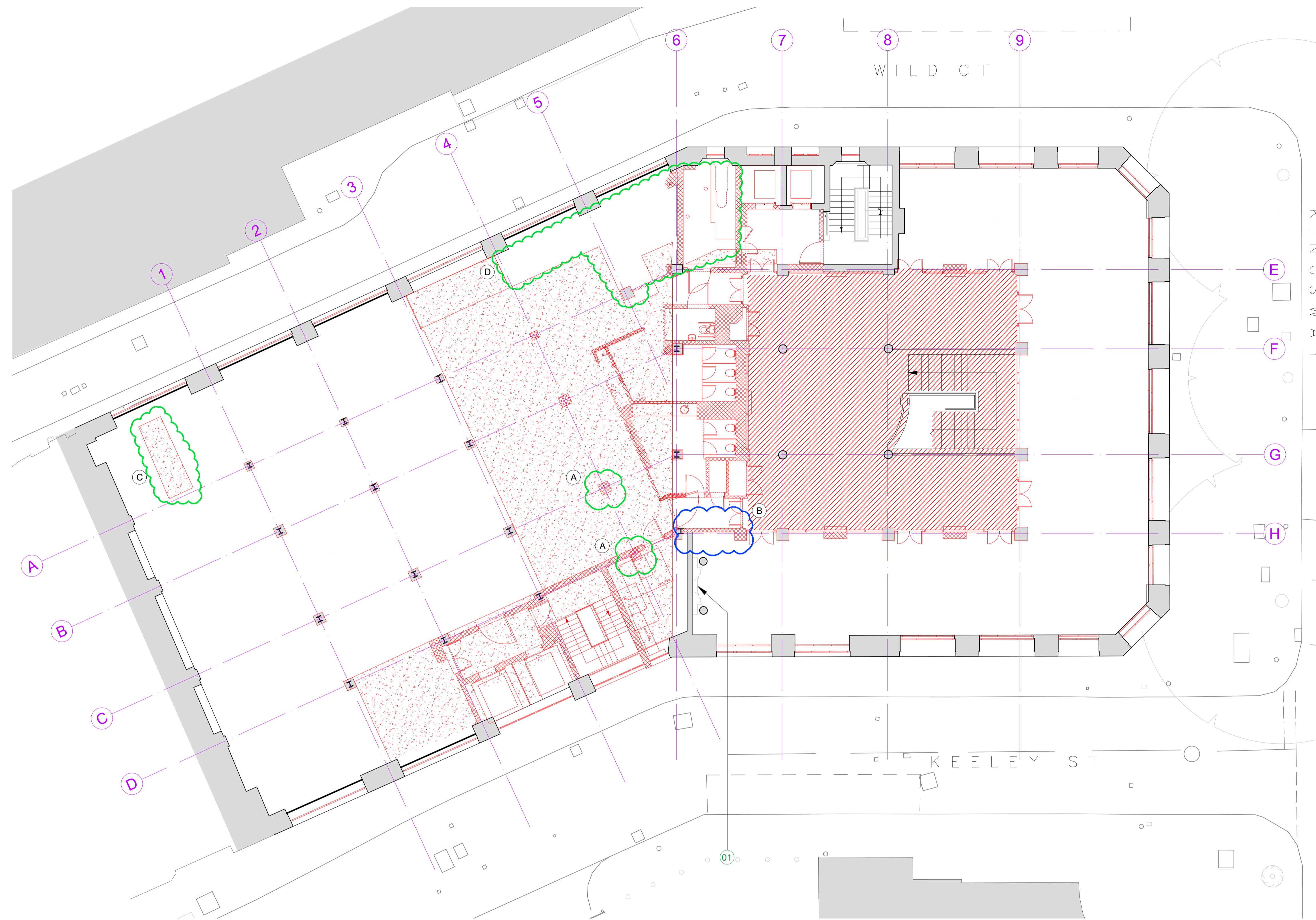


# BARR GAZETAS



- KEY :**
- Existing walls
  - Demolition and strip out
  - Demolition and strip out
  - Strip out of finishes and concrete column encasement to reveal existing steel column
  - Floor slab demolition
  - Remove modern marble floor finish within the historic reception area and from the historic stair

**GENERAL NOTE:**  
All modern (non-original) finishes, fixtures, fittings and linings to be removed from walls, floors and ceilings throughout.

**Note:**

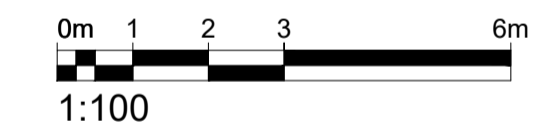
1. Existing historic fireplace to be protected during demolition works.

Indicates proposed changes to approved planning application 2019/6088/P and approved LBC 2019/6270/L

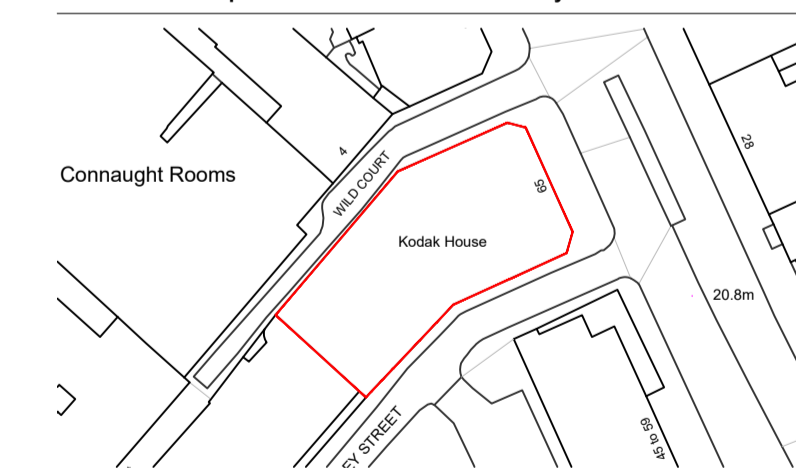
- CHANGE AFFECTS HISTORIC FABRIC
- CHANGE AFFECTS MODERN FABRIC ONLY

- Description of changes**
- A. 2no. columns removed at Grid lines C4 and D/4, in order to avoid substantial transfer structure at GF, and a reduction of 500mm headroom within the reception / entrance to the building. Refer also to HTS drawings and SK91.
  - B. Additional wall removed between Grid lines H / 6-7 to allow for temporary structural works to be installed.
  - C. Defective slab to be removed
  - D. Reduced extent of slab demolition following structural investigations, and retained column on GL 5/A

Drawings to be read alongside Bidwells Heritage Statement for further detail and justifications of the changes affecting Historic fabric.



Rev.	Description	By	Date
P6	For Planning	AC	11.03.21
P5	For Planning	AC	27.01.21
P4	For Planning	AC	28.11.19



**Client**  
Kings Keeley Limited C/o Clearbell Capital LLP

**Project**  
65 Kingsway - Base Scheme

Status	Purpose of issue	RIBA stage
S2	For Planning	2

Project No.	Drawn	Checked	Scale	Rev.
1914	FB	TJ	1:100 @ A1 1:200 @ A3	P6

**Drawing No.**  
1914-BG-01-01-DR-A-15.203

Do not scale from this drawing. The Contractor is to take and check all dimensions on site before work commences. Discrepancies must be reported to the Architect. Subcontractors must verify all dimensions on site before making a shop drawing or commencing manufacturing. This drawing is copyright. ©

© Copyright Barr Gazetas Ltd.  
A 10 Heddon Street, London, W1B 4BG  
T 0207 638 5591  
W www.barrgazetas.com

01 Demolition First Floor Plan  
15.203 1:100@A1, 1:200@A3