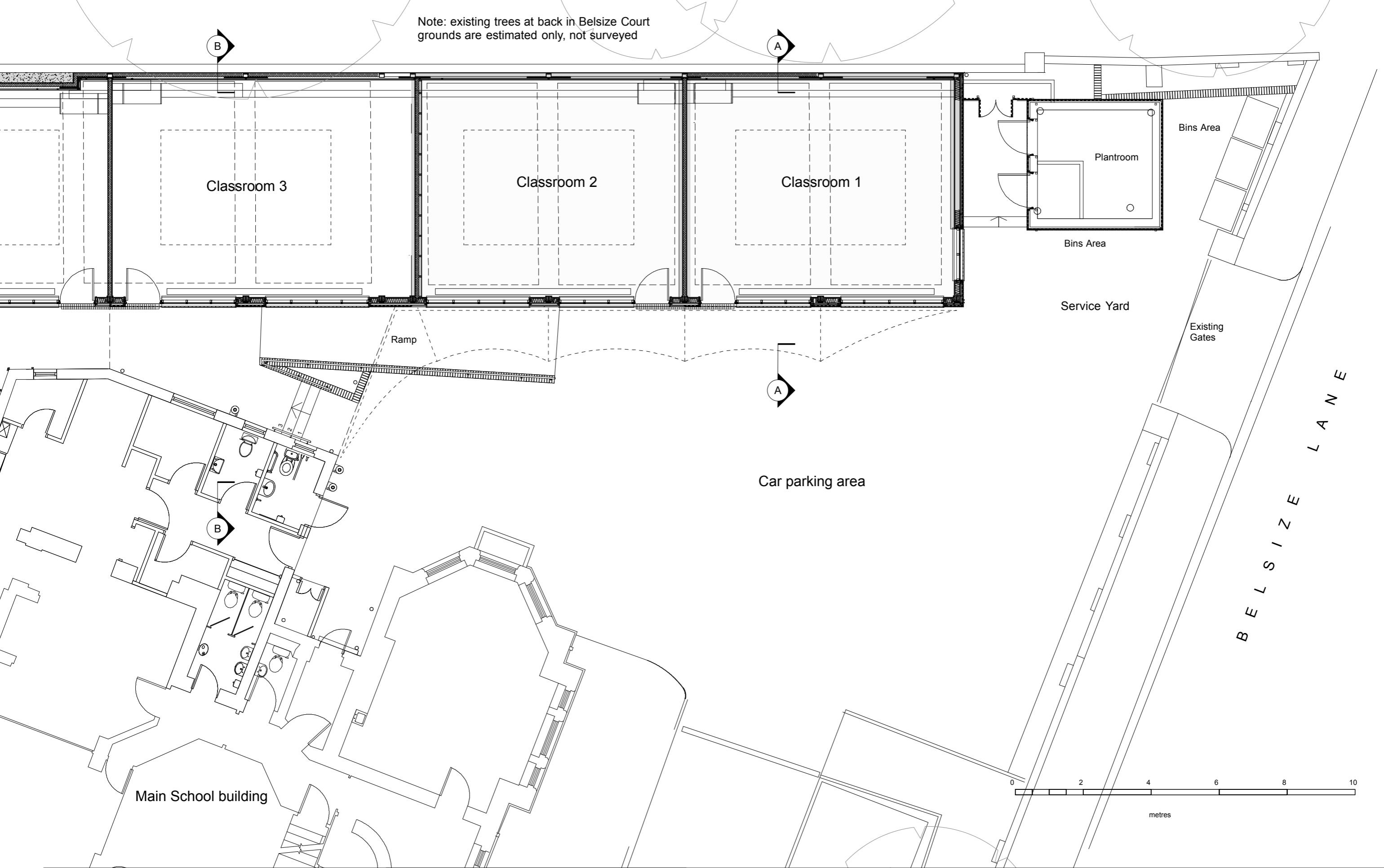


Note: existing trees at back in Belsize Court grounds are estimated only, not surveyed



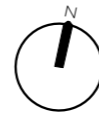
ed toovey architects

studio 401 royle building
31 wenlock road
london n1 7sh
07880 725763
edtoovey@yahoo.co.uk

Revisions:

PLANNING ISSUE

- Always take site measurements to verify dimensions
- Refer to M&E Engineers drawings for all services



St. Christopher's School: Reception Classrooms Project

Ground floor plan existing

January 2020

Drwg No. 2026 / GA / 001 -

Scale 1:100 @ A3