

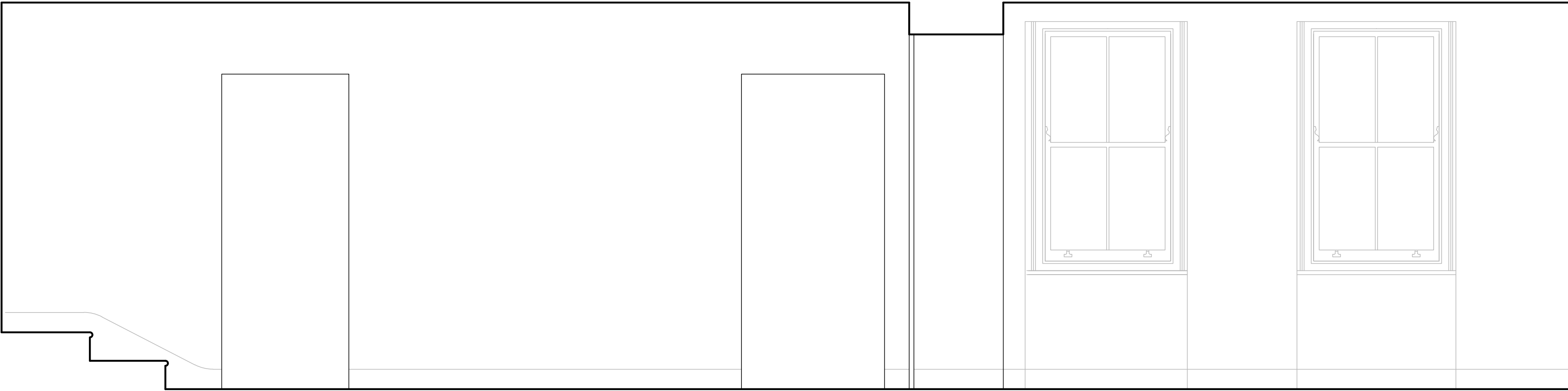
CORNICES DATING FROM 1993
TO BE REMOVED

PLAIN FLUSH SKIRTINGS TO REPLACE
EXISTING DATING FROM 1993

B-A

FRAMELESS GLASS FIRE DOORS
BETWEEN DINING ROOM AND
STAIRWELL

FRAMELESS GLASS FIRE DOORS
TO KITCHEN

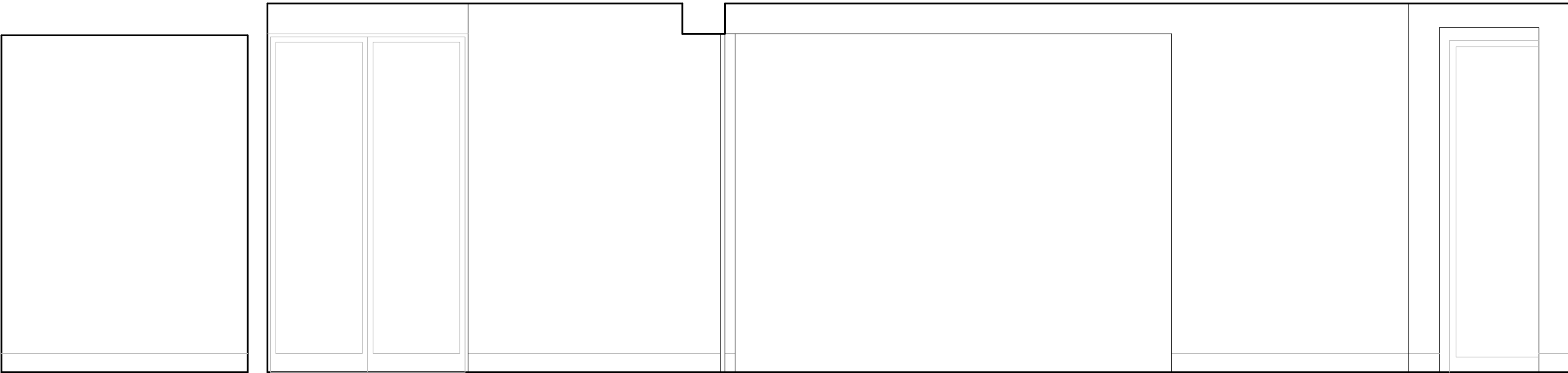


CORNICES DATING FROM 1993
TO BE REMOVED

PLAIN FLUSH SKIRTINGS TO REPLACE
EXISTING DATING FROM 1993

B-B

FLUSH PAINTED JOINERY
DOOR TO UTILITY DETAIL
Ar-5



CORNICES DATING FROM 1993
TO BE REMOVED

PLAIN FLUSH SKIRTINGS TO REPLACE
EXISTING DATING FROM 1993

B-C

FRAMELESS GLASS FIRE DOORS
TO TV SNUG

ENLARGED OPENING BETWEEN
KITCHEN AND DINING ROOM
WITH PLAIN PLASTER REVEALS

Revisions

Architecture and Design © Copyright

STEPHEN BRANDES ARCHITECTS
5 Spedan Close Hampstead London NW3 7XF
architects@brandes.co.uk Tel 020 7431 2225

Job Title

17 GREVILLE PLACE
LONDON NW6

Drawing Title

BASEMENT ROOM ELEVATIONS
PROPOSED

SCALE	1:20 @ A1	CAD Information
DATE	JAN 2021	
DRAWN	SB	
ISSUE	PLANNING	

Job No.	Drawing No.	Rev.
591	PLB 141	