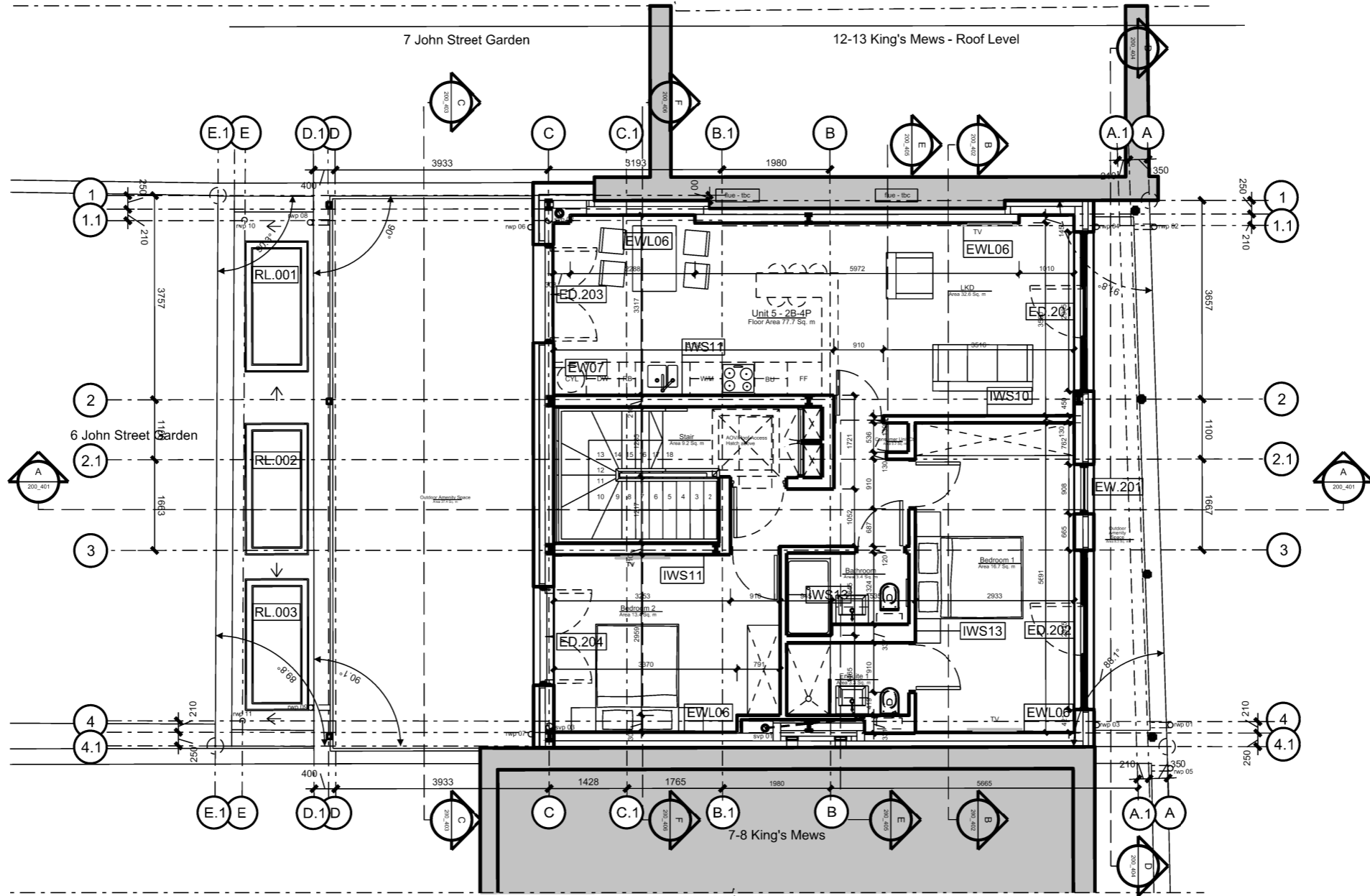


Notes:  
DESIGN INTENT ONLY  
NOT FOR CONSTRUCTION

1. Issued for design intent only. Items of external envelope are to be designed and constructed to specialist subcontractor design details. (windows & window interfaces, curtain walling, external doors, roofing, metsec SFS, vents, stairs, balustrades, damp proofing)
2. It is the responsibility of the Main Contractor to ensure final compliance with the employers requirements.
3. Any structure shown is subject to confirmation and coordination by the Structural Engineer. Do not construct structural items using this drawing.
4. Any mechanical & electrical information shown is subject to confirmation and coordination by the M+E Subcontractor. Do not construct M+E items using this drawing.
5. Any drainage pipe locations, sizes and numbers shown are subject to confirmation by the M+E Subcontractor.
6. Details are subject to Building Control Approval.
7. Below ground drainage in abeyance - awaiting Civil Engineer design input. Any below ground drainage shown is subject to coordination and confirmation by Civil Engineer.
8. To be in accordance with Secured By Design guidance for new homes.
9. MetSec/Metal structures to be confirmed by Scon & SE.
10. Design in subject to amendments pending awaited Planning Approval.
11. All measurements to be checked on site prior to construction.
12. All structural opening dimensions to be confirmed by supplier/SCON.



|   |                                                                                            |          |     |     |
|---|--------------------------------------------------------------------------------------------|----------|-----|-----|
| S | Construction Issue.                                                                        | 18.06.18 | KD  | JGW |
| R | Walls updated to metsec/metal stud.                                                        | 22.05.18 | KD  | JGW |
| Q | Furniture added.                                                                           | 11.05.18 | KD  | JGW |
| P | Furniture added, kitchen reconfiguration.                                                  | 09.05.18 | KD  | JGW |
| O | Section F-F annotation added.                                                              | 16.04.18 | KD  | JGW |
| N | Wet room areas doors changed to opening outwards.                                          | 06.04.18 | KD  | JGW |
| M | Plans amended to new duplex scheme, aligned with elevations.                               | 29.03.18 | KD  | JGW |
| L | Drawings updated, plan detail annotations added.                                           | 13.03.18 | KD  | JGW |
| K | New floor plan layout, bedroom & bathroom.                                                 | 05.03.18 | KD  | JGW |
| J | Ensuite position updated. SVP's amended.                                                   | 27.02.18 | JGW | VP  |
| H | Column positions added. Kitchen layout updated.                                            | 07.02.18 | JGW | VP  |
| G | Updated to show furniture, rwnps, split riser, revised brick setting out. Chimney removed. | 31.01.18 | JGW | VP  |
| F | Windows Updated                                                                            | 22.01.18 | JGW | VP  |
| E | Wall build-ups updated                                                                     | 03.01.18 | JGW | VP  |
| D | Grid Updated                                                                               | 15.12.17 | JGW | VP  |
| C | Context Updated                                                                            | 01.12.17 | JGW | VP  |
| B | Updated in-line with Planning Amendments.                                                  | 17.11.17 | JGW | VP  |
| A | Issued for comment.                                                                        | 25.10.17 | JGW | VP  |

**General Notes:**  
Do not scale from this drawing. Use marked dimensions. Should any discrepancies be noted, please inform this office. This drawing is copyright of Matthew Alchurch Architects Limited

Scale Bar:  
0m 1 2.5 5 10m



|      |                                             |          |         |         |
|------|---------------------------------------------|----------|---------|---------|
| AC   | M(4)2 - Confirmation review.                | 15.03.21 | KD      | JGW     |
| Y    | LKD door repositioned. Consumer Unit added. | 10.09.18 | KD      | JGW     |
| X    | Area plan revised.                          | 30.08.18 | KD      | JGW     |
| W    | Int. setting out dimensions added.          | 19.07.18 | KD      | JGW     |
| V    | Bar added.                                  | 05.07.18 | KD      | JGW     |
| U    | 5 Unit Scheme. Updated to JTC comments.     | 28.06.18 | KD      | JGW     |
| T    | 5 Unit Scheme.                              | 27.06.18 | KD      | JGW     |
| Rev: | Description:                                | Date     | Drn by: | Ckd by: |

|                                                                          |             |                     |          |          |
|--------------------------------------------------------------------------|-------------|---------------------|----------|----------|
| Client:<br><b>Barhos Development Ltd</b>                                 |             |                     |          |          |
| Project Name:<br><b>10-11 King's Mews</b>                                |             |                     |          |          |
| Drawing Title:<br><b>General Arrangement: Proposed Second Floor Plan</b> |             |                     |          |          |
| Project No:                                                              | Drawing No: | Revision:           | Scale:   | Date:    |
| JHT02                                                                    | P_200_204   | AC                  | A3@1:100 | Oct 2017 |
| Drawn By:                                                                | Checked By: | Status:             |          |          |
| KD                                                                       | JGW         | <b>Construction</b> |          |          |

**the boathouse design studio**  
27 ferry road teddington tw11 9nn  
t: 020 8973 0050  
e: info@maa-architects.com  
w: www.maa-architects.com