

Notes:
DESIGN INTENT ONLY
NOT FOR CONSTRUCTION

1.Issued for design intent only. Items of external envelope are to be designed and constructed to specialist subcontractor design details. (windows & window interfaces, curtain walling, external doors, roofing, metsec SFS, vents, stairs, balustrades, damp proofing)

2.It is the responsibility of the Main Contractor to ensure final compliance with the employers requirements.

3.Any structure shown is subject to confirmation and coordination by the Structural Engineer. Do not construct structural items using this drawing.

4.Any mechanical & electrical information shown is subject to confirmation and coordination by the M+E Subcontractor. Do not construct M+E items using this drawing.

5.Any drainage pipe locations, sizes and numbers shown are subject to confirmation by the M+E Subcontractor.

6.Details are subject to Building Control Approval.

7. Below ground drainage in abeyance - awaiting Civil Engineer design input. Any below ground drainage shown is subject to coordination and confirmation by Civil Engineer.

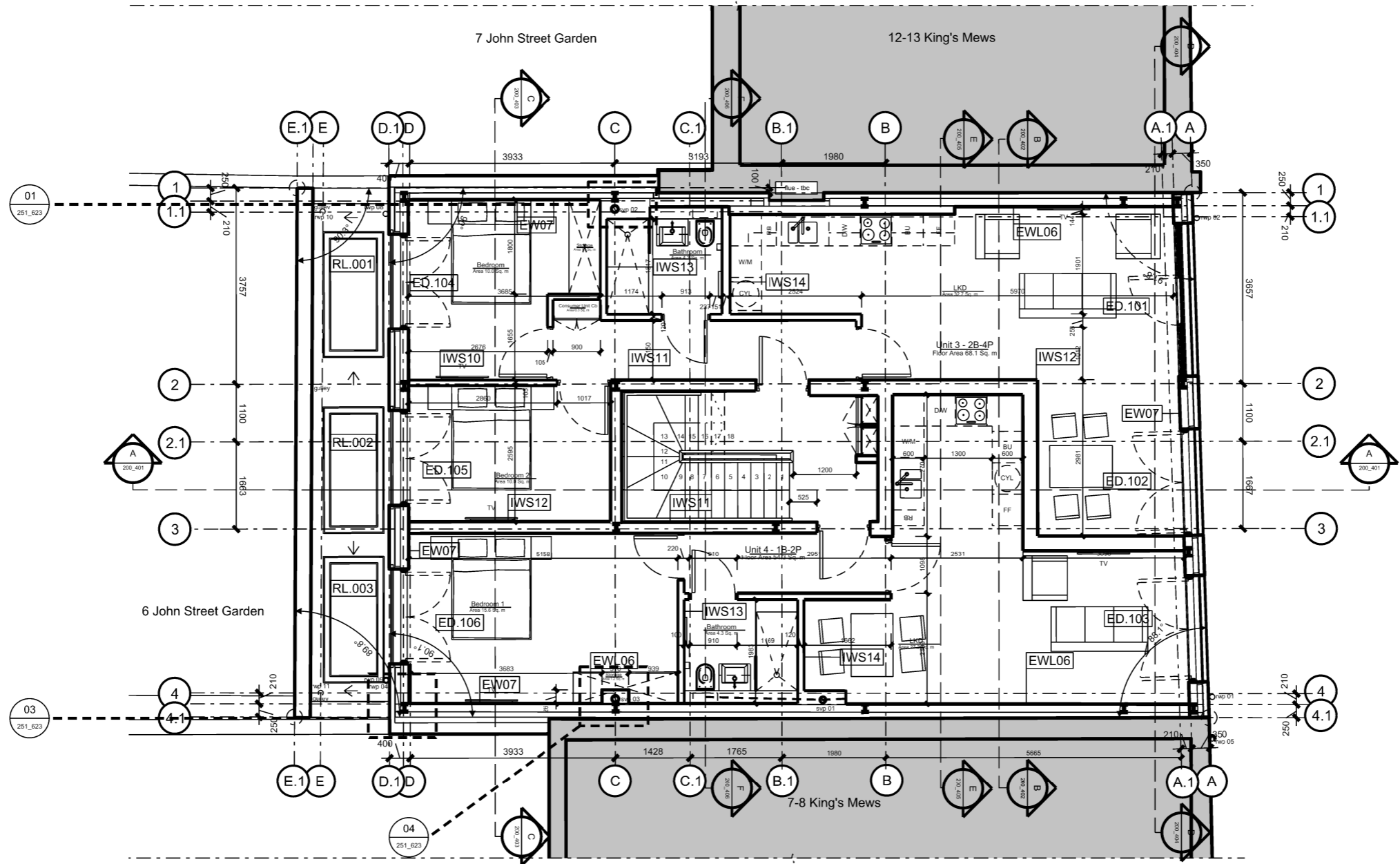
8. To be in accordance with Secured By Design guidance for new homes.

9. MetSec/Metal structures to be confirmed by Scon & SE.

10. Design in subject to amendments pending awaited Planning Approval.

11. All measurements to be checked on site prior to construction.

12. All structural opening dimensions to be confirmed by supplier/SCON.



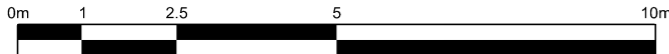
U	5 Unit Scheme.	27.06.18	KD	JGW
T	Construction Issue.	18.06.18	KD	JGW
S	Walls updated to metsec/metal stud.	22.05.18	KD	JGW
Q	Furniture added.	11.05.18	KD	JGW
P	Furniture added, kitchen reconfiguration.	09.05.18	KD	JGW
O	Section F-F annotation added.	16.04.18	KD	JGW
N	Wet room areas doors changed to opening outwards, layout swapped.	06.04.18	KD	JGW
M	Plans amended to new duplex scheme, aligned with elevations.	29.03.18	KD	JGW
L	Drawings updated, plan detail annotations added.	09.03.18	KD	JGW
K	New floor plan layout, kitchen repositioning.	05.03.18	JGW	VP
J	SVPs amended.	27.02.18	KD	JGW
H	Lobbies added, kitchens updated, columns positions added.	07.02.18	KD	JGW
G	Updated to show furniture, split riser, revised brick setting out, naps. Chimney removed.	31.01.18	JGW	VP
F	Windows updated	22.01.18	JGW	VP
E	Well build ups updated	04.01.18	JGW	VP
D	Grid Updated	08.12.17	JGW	VP
C	Context Updated	01.12.17	JGW	VP
B	Updated in-line with Planning Amendments: rooflights added, front wall position amended.	17.11.17	JGW	VP
A	Issued for comment.	25.10.17	VP	

General Notes:

Do not scale from this drawing. Use marked dimensions.
Should any discrepancies be noted, please inform this office.
This drawing is copyright of Matthew Allchurch Architects Limited



Scale Bar:



AC M(4)2 - Confirmation review.

15.03.21 KD JGW

Z Unit 3. Consumer unit repositioned .
Bathroom shower tray/bath re-designed at 1800x800mm &
Bedroom wardrobe at 1800x800mm.

10.09.18 KD JGW

Y Area plans revised.

30.08.18 KD JGW

X Int. setting out dimensions added.

19.07.18 KD JGW

W Kitchen in Unit 4 swapped with dining area.

05.07.18 KD JGW

Rev: Description:

Date Drn by: Ckd by:

Client:

Barhos Development Ltd

Project Name:

10-11 King's Mews

Drawing Title:

General Arrangement: Proposed First Floor Plan

Project No:

JHT02

Drawing No:

P_200_203

Revision:

Z

Scale:

A3@1:100
A1@1:50

Date:

Oct 2017

Drawn By:

KD

Checked By:

JGW

Status:

Construction



the boathouse design studio

27 ferry road teddington tw11 9nn

t: 020 8973 0050

e: info@maa-architects.com

w: www.maa-architects.com