



Notes:  
DESIGN INTENT ONLY  
NOT FOR CONSTRUCTION

1. Issued for design intent only. Items of external envelope are to be designed and constructed to specialist subcontractor design details. (windows & window interfaces, curtain walling, external doors, roofing, metsec SFS, vents, stairs, balustrades, damp proofing)

2. It is the responsibility of the Main Contractor to ensure final compliance with the employers requirements.

3. Any structure shown is subject to confirmation and coordination by the Structural Engineer. Do not construct structural items using this drawing.

4. Any mechanical & electrical information shown is subject to confirmation and coordination by the M+E Subcontractor. Do not construct M+E items using this drawing.

5. Any drainage pipe locations, sizes and numbers shown are subject to confirmation by the M+E Subcontractor.

6. Details are subject to Building Control Approval.

7. Below ground drainage in abeyance - awaiting Civil Engineer design input. Any below ground drainage shown is subject to coordination and confirmation by Civil Engineer.

8. To be in accordance with Secured By Design guidance for new homes.

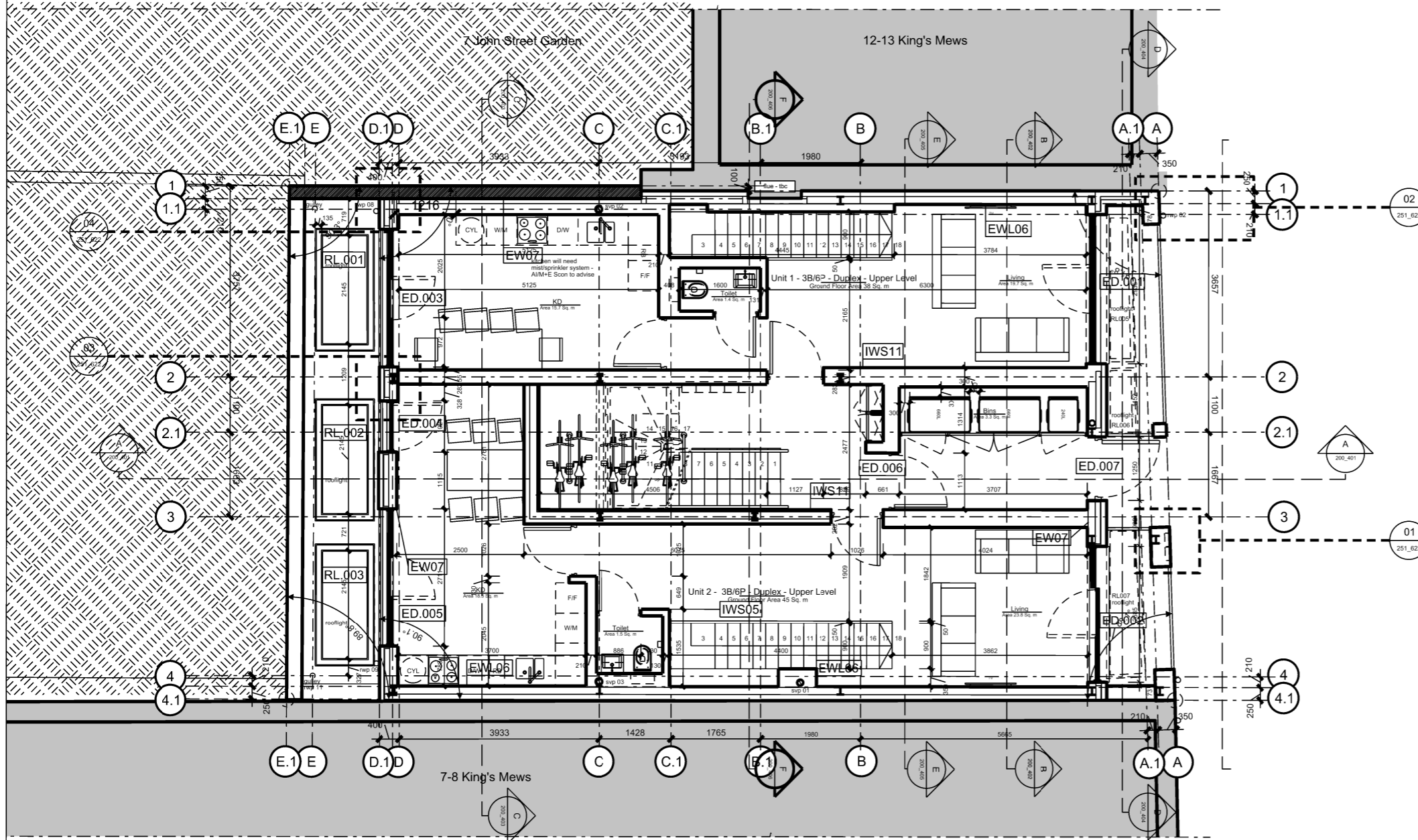
9. MetSec/Metal structures to be confirmed by Scon & SE.

10. Design in subject to amendments pending awaited Planning Approval.

11. All measurements to be checked on site prior to construction.

12. All structural opening dimensions to be confirmed by supplier/SCON.

U	5 Unit Scheme.	27.06.18	KD	JGW
T	Construction Issue.	18.06.18	KD	JGW
S	Walls updated to metsec/metal stud.	22.05.18	KD	JGW
R	Furniture added.	11.05.18	KD	JGW
Q	Furniture added, kitchen reconfiguration.	09.05.18	KD	JGW
P	Unit 3, amendment to bedroom & ensuite/bathroom layout.	24.04.18	KD	JGW
O	Section F-F annotation added.	16.04.18	KD	JGW
N	Wet room areas doors changed to opening outwards, balustrade added to entrance.	06.04.18	KD	JGW
M	Plans amended to new duplex scheme, aligned with elevations.	29.03.18	KD	JGW
L	Duplex scheme. Revision cloud on structural column.	27.03.18	KD	JGW
K	Drawings updated, plan detail annotations added.	09.03.18	KD	JGW
J	SVP's amended. Rooflights dimensioned (to inside face of ply lining).	27.02.18	KD	JGW
H	Lobbies added, kitchens updated, column positions added, meter cupboards added.	07.02.18	KD	JGW
G	Updated to show furniture, rwp's, revised brick setting out. Chimney removed.	31.01.18	JGW	VP
F	Windows updated.	22.01.18	JGW	VP
E	Wall build up updated.	03.01.18	JGW	VP
D	Grid updated & section references updated.	13.12.17	JGW	VP
C	Context updated.	01.12.17	JGW	VP
B	Updated in-line with Planning Amendments: rooflights added, cycle & bin storage amended.	17.11.17	VP	
A	Issued for comment.	25.10.17	JGW	VP



**General Notes:**

Do not scale from this drawing. Use marked dimensions.  
Should any discrepancies be noted, please inform this office.  
This drawing is copyright of Matthew Allchurch Architects Limited



AC	M(4)2 - Confirmation review.	15.03.21	KD	JGW
AA	Ext. opening dimensions added.	28.08.18	KD	JGW
Z	Updated to JTC comments.	19.07.18	KD	JGW
Y	New refuse & recycle layout.	19.07.18	KD	JGW
X	Int. setting out dimensions added.	18.07.18	KD	JGW
W	Tables & Chairs for 6 people added to Units 1 & 2.	05.07.18	KD	JGW
Rev:	Description:	Date	Drn by:	Ckd by:

Client: <b>Barhos Development Ltd</b>				
Project Name: <b>10-11 King's Mews</b>				
Drawing Title: <b>General Arrangement: Proposed Ground Floor Plan</b>				
Project No: <b>JHT02</b>	Drawing No: <b>P_200_202</b>	Revision: <b>AC</b>	Scale: <b>A3@1:100 A1@1:50</b>	Date: <b>Oct 2017</b>
Drawn By: <b>KD</b>	Checked By: <b>JGW</b>	Status: <b>Construction</b>		

**MAA Architects**

the boathouse design studio

27 ferry road teddington tw11 9nn

t: 020 8973 0050

e: info@maa-architects.com

w: www.maa-architects.com