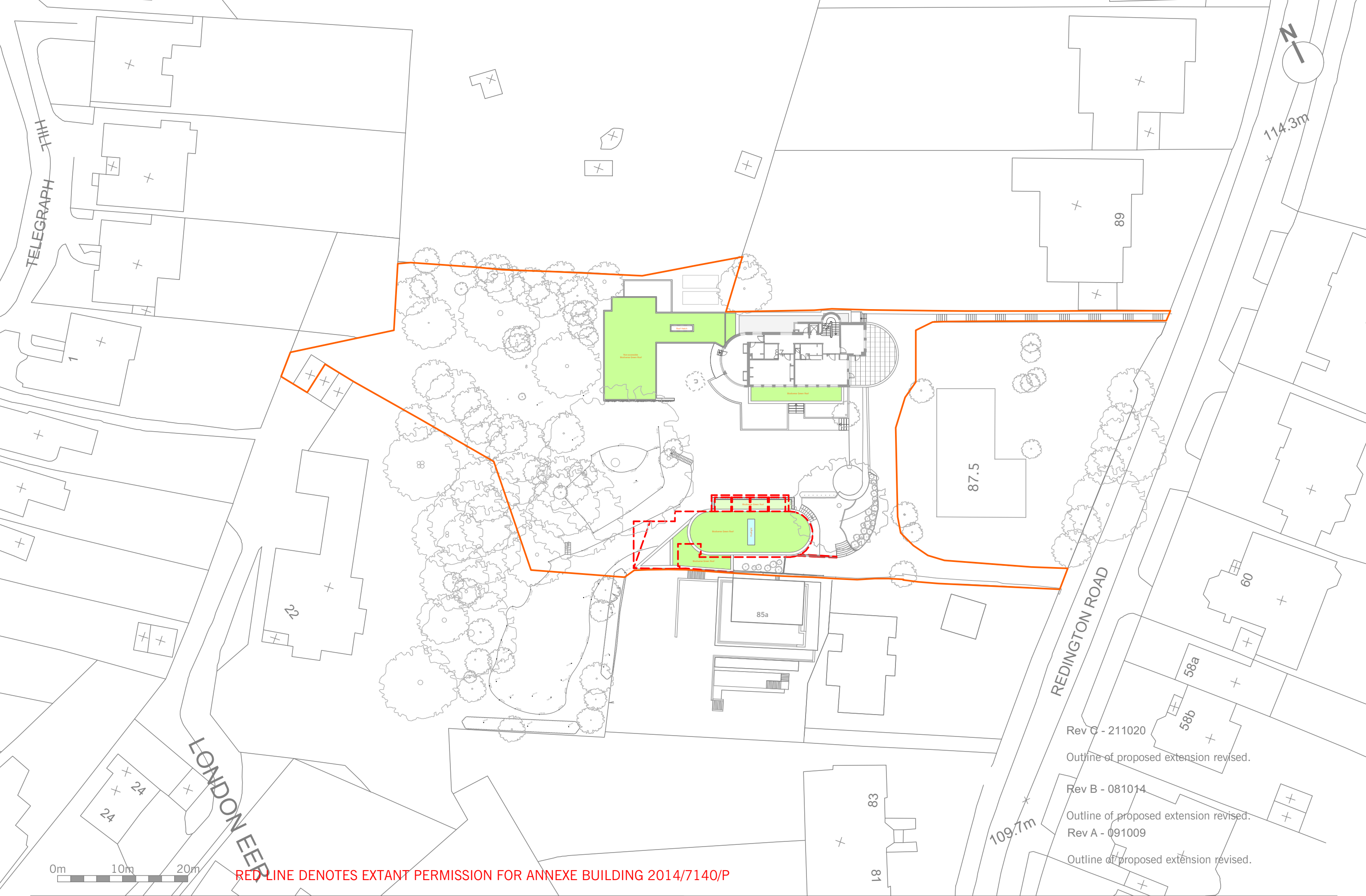
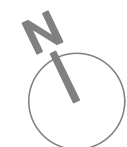


HHH1 HILL HOUSE HAMPSTEAD 87 REDINGTON ROAD NW3

3. COMPARISON BETWEEN EXTANT PERMISSION FOR ANNEXE BUILDING 2014/7140/P
& PROPOSED SCHEME 2020





Rev D - 211020

Revised external outline:

- 1] Revised column spacing for arcade
- 2] Reduced footprint of 8M2
- 3] Cut back of north west corner and small increase to the south.
- 4] Removal of courtyard facing onto 85A.
- 5] New roof light over living space
- 6] New obscured glass door for maintenance only to replace obscured glass window to southern boundary.

Rev C - 081014

Revised external outline:

- Arcaded terrace added on the North side
- Building footprint amended as shown

Revised internal layout:

- Reduce of GIA from 169sqm(revB) to 150sqm(rev C)

Rev B - 091009

Dining room and kitchen moved west to protect root ball of poplar T6. Dining room reduced north by 500 mm. Hall widened.

Glass link removed.

South extension cut back to protect root ball of oak T11.

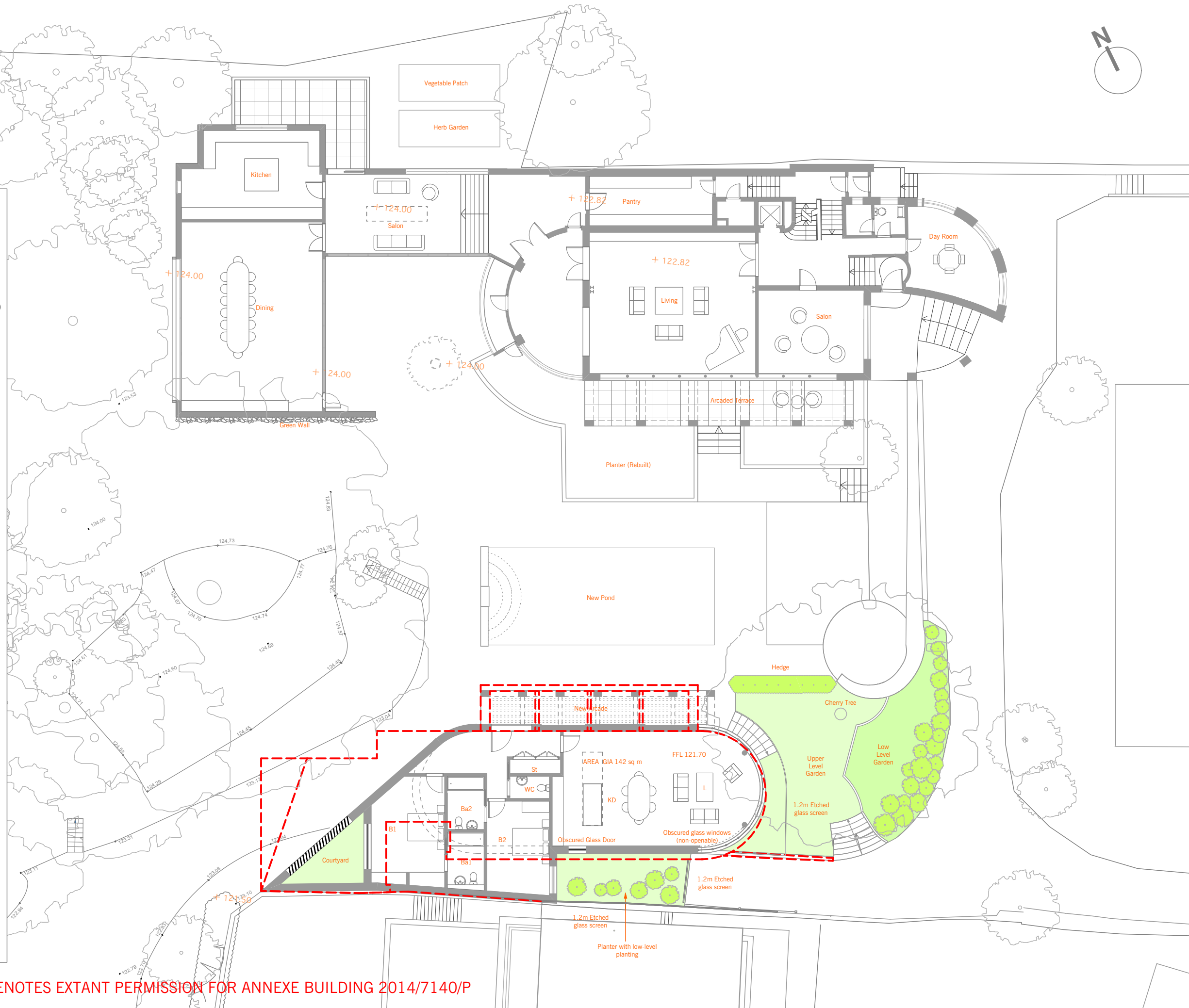
Rev A

Non-accessible low level planter added to south of annex.

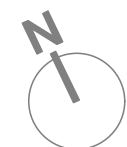
1.2m glazed screens added to prevent access and overlooking to no 85A.

1/3 of library window specified obscured glass and non-openable.

Picture window added to west elevation of rear extension.



RED LINE DENOTES EXTANT PERMISSION FOR ANNEXE BUILDING 2014/7140/P



Rev D - 211020

Revised external outline:

- 1] Revised column spacing for arcade
- 2] Reduced footprint of 8M2
- 3] Cut back of north west corner and small increase to the south.
- 4] Removal of courtyard facing onto 85A.
- 5] New roof light over living space
- 6] New obscured glass door for maintenance only to replace obscured glass window to southern boundary.

Rev C - 081014

Outline of proposed extension revised.

Rev B - 091009

Glass link removed.

Roof of proposed extension revised.

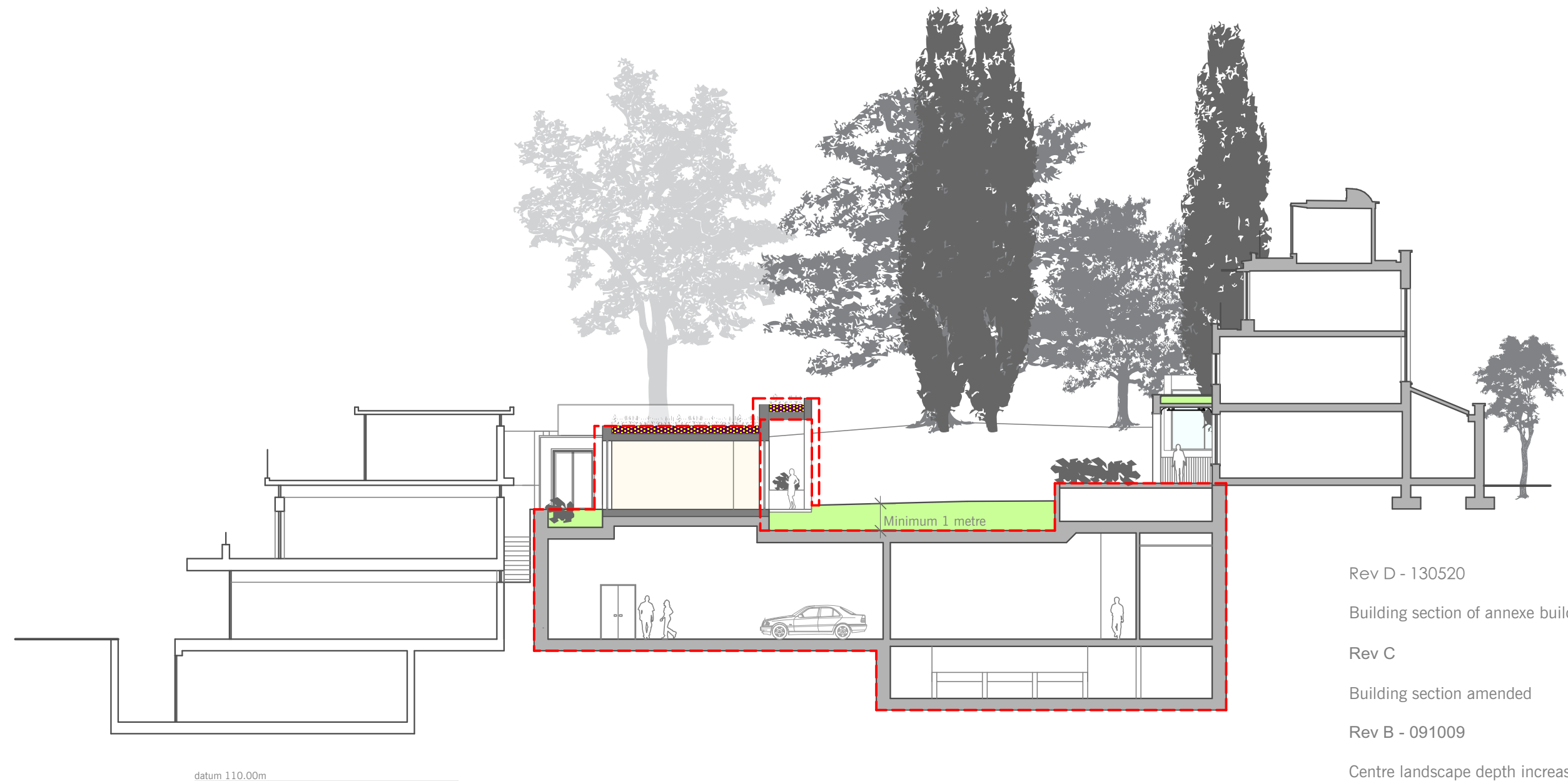
Rev A

Planters added to annex roof.

Glazed screen added to annex roof to prevent access.



RED LINE DENOTES EXTANT PERMISSION FOR ANNEXE BUILDING 2014/7140/P



Rev D - 130520

Building section of annexe building amended

Rev C

Building section amended

Rev B - 091009

Centre landscape depth increased.

Rev A

Non-accessible low level planter added to south of annex.

1.2m glazed screens added to prevent access and overlooking to no 85A.

1/3 of library window specified obscured glass and non-openable.

Planters and guarding added to roof of annex at rear.

RED LINE DENOTES EXTANT PERMISSION FOR ANNEXE BUILDING 2014/7140/P

MATERIALS LEGEND

- 1. Vertical red bricks to match existing
- 2. New planting
- 3. Oak doors
- 4. White render
- 5. Cast iron safety railings
- 6. 1.2M Etched glass screen



Rev E - 211020
Annexe arcade revised.

Rev D - 081014
Outline of proposed extension revised.

Rev C - 161109
Materials to entrance of car park indicated.

Rev B - 091009
Dining room reduced north by 500 mm.

Rev A
Non-accessible low level planter added to south of annex.

1.2m glazed screens added to prevent access and overlooking.

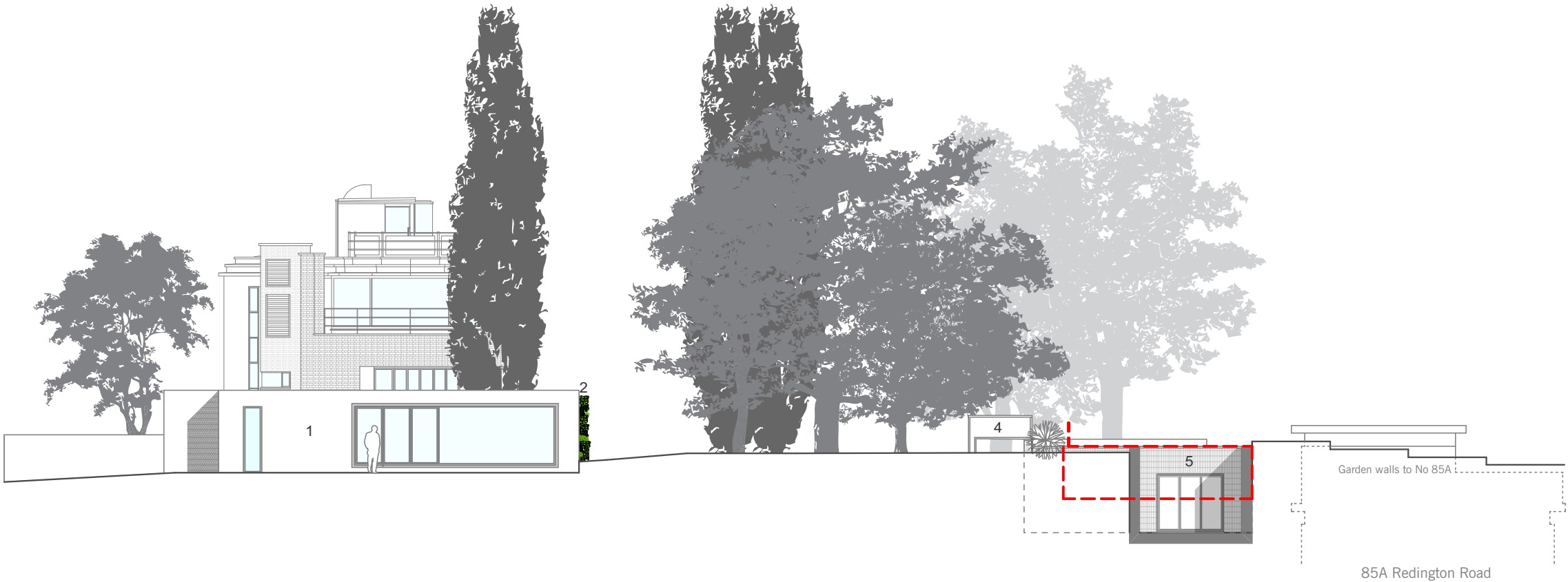
1/3 of library window specified obscured glass and non-openable.

Planters and guarding added to roof of annex at rear.

RED LINE DENOTES EXTANT PERMISSION FOR ANNEXE BUILDING 2014/7140/P

MATERIALS LEGEND

- 1. White render
- 2. Green wall
- 3. 1.2M Etched glass screen
- 4. White stone finish
- 5. Vertical red brick to match existing



Rev D - 211020

- Cut back north-west corner of annexe
- Annex arcade revised.

Rev C - 081014

Outline of proposed extension revised.

Rev B - 091009

Dining room reduced north by 500mm.

Kitchen moved north.

Site fence of north boundary to 89 Redington Road indicated.

Rev A

Planters and guarding added to roof of annex to make it non-accessible.

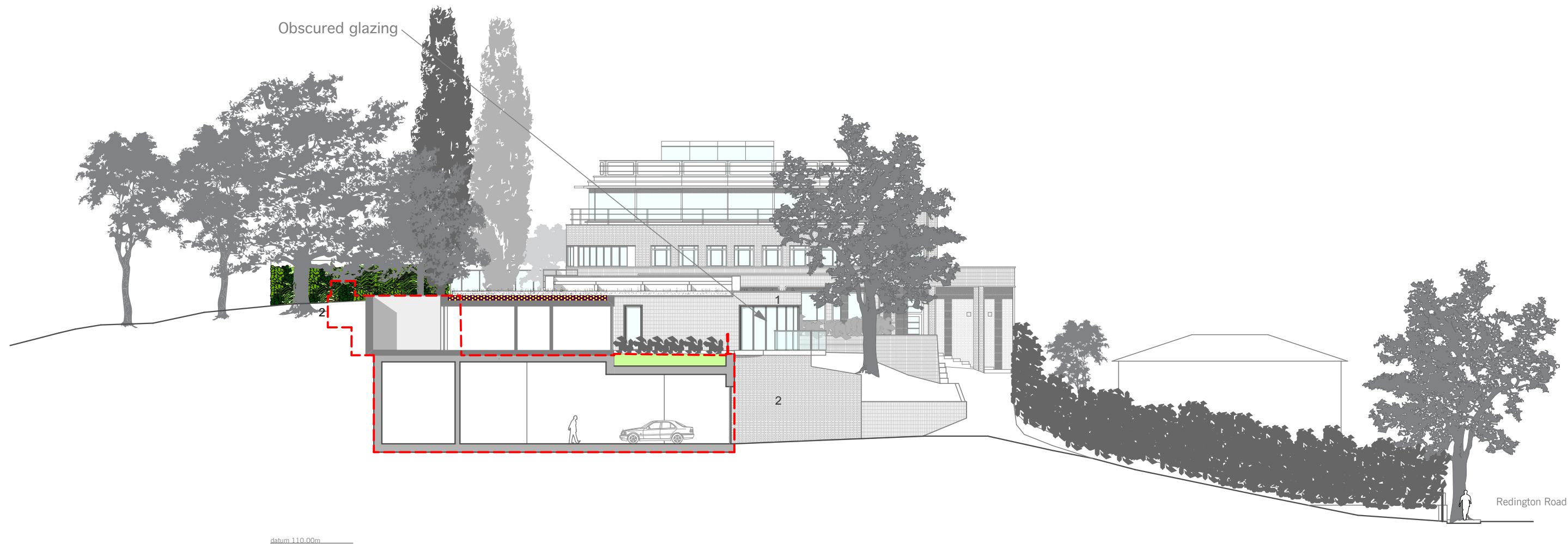
Picture window added to west elevation of rear extension.

Context of 85A added to drawing.

RED LINE DENOTES EXTANT PERMISSION FOR ANNEXE BUILDING 2014/7140/P

MATERIALS LEGEND

- 1. Vertical red bricks to match existing
- 2. New retaining wall



RED LINE DENOTES EXTANT PERMISSION FOR ANNEXE BUILDING 2014/7140/P

- Rev B - 091009

Basement level lowered.
- Rev A

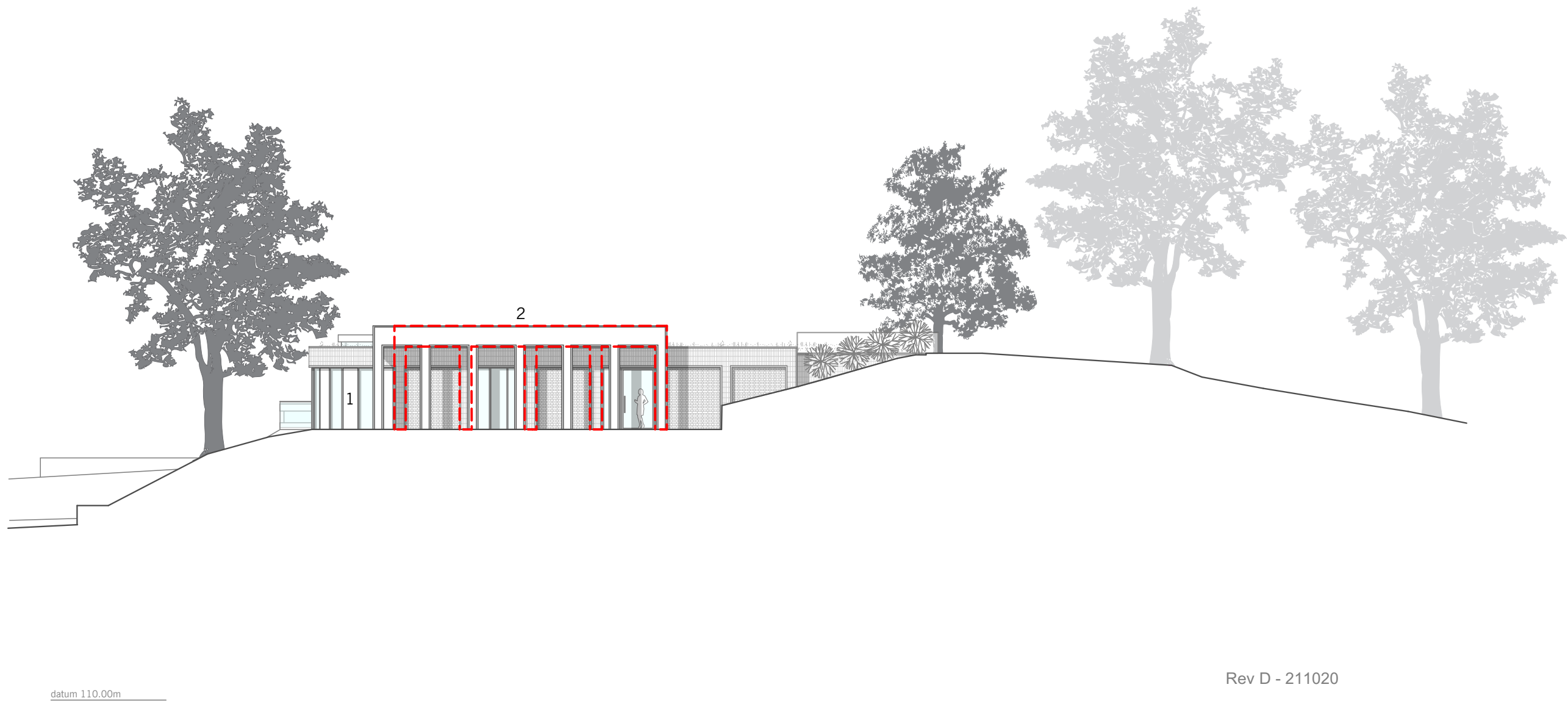
Non-accessible low level planter added to south of annex.
- Rev D - 211020

Cut back north-west corner of annexe
Metal grating decking with planted trees over parking for one car.
- Rev C - 081014

Outline of proposed extension revised.
- 1.2m glazed screens added to prevent access and overlooking.
- 1/3 of library window specified obscured glass and non-openable.
- Planters and guarding added to roof of annex at rear.

MATERIALS LEGEND

- 1. Alternating solid & glass panels
- 2. White stone finish



Rev D - 211020

Column spacing and cladding for arcade revised.

Rev C - 081014

Outline of proposed extension revised.

Rev B - 091009

South extension cut back to protect root ball of oak T11.

Rev A

Planters and guarding added to roof of annex to make it non-accessible.

RED LINE DENOTES EXTANT PERMISSION FOR ANNEXE BUILDING 2014/7140/P