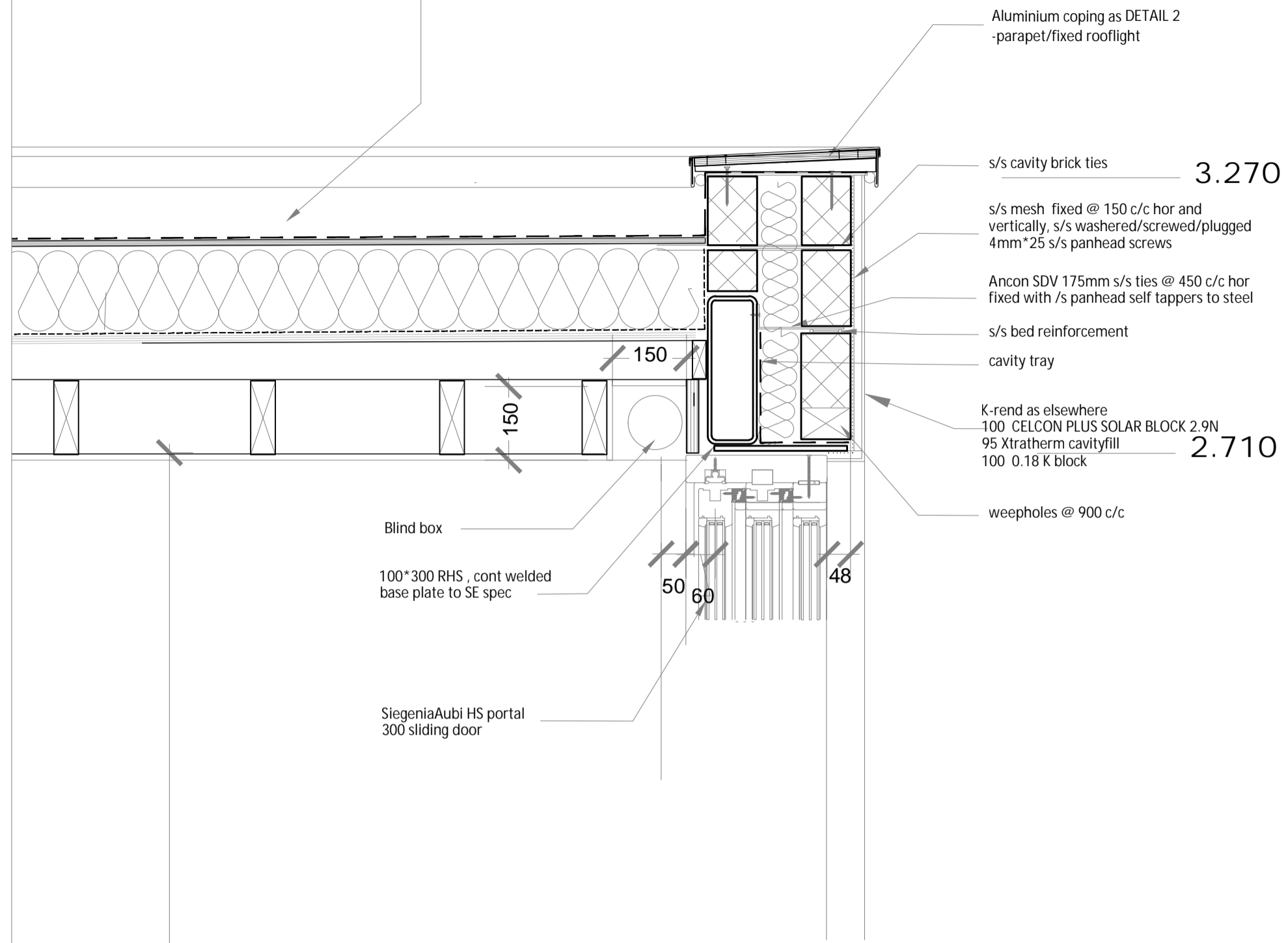
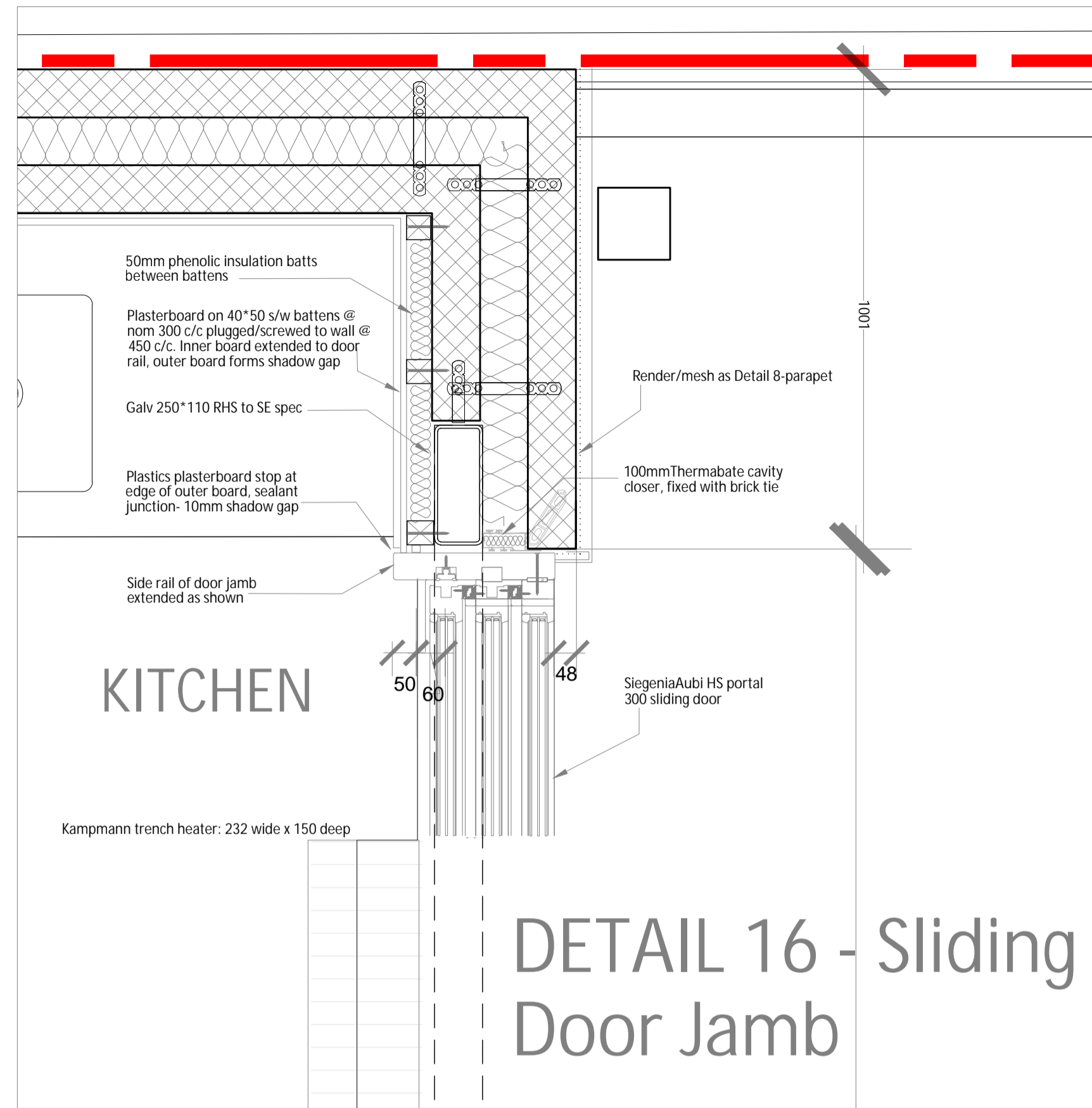
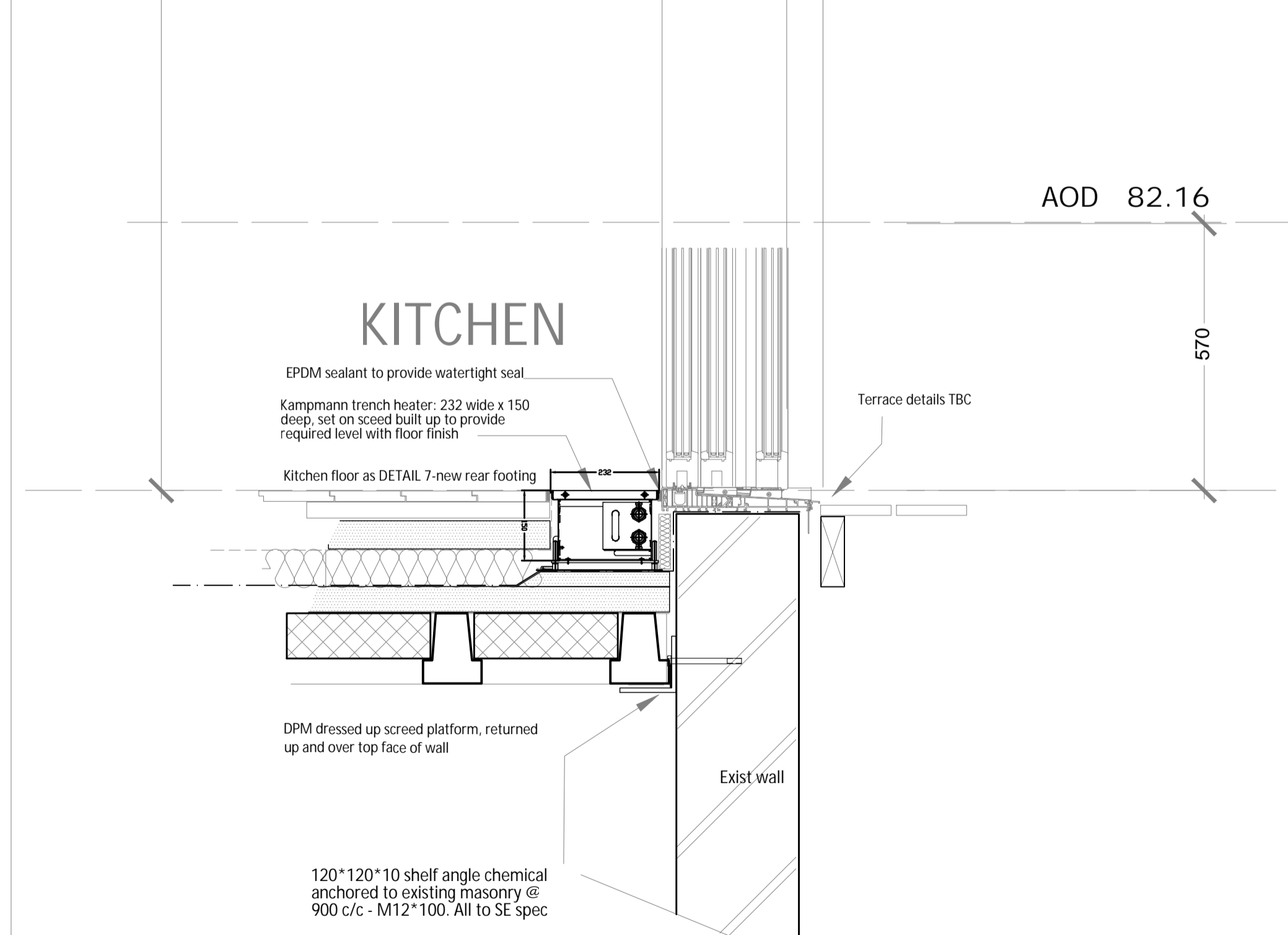


Kemperol V210 [J31-120] on 12 WBP ply on 200 thk foil faced phenolic insulation [J42-427] on airtight VCL layer returned up and taped to walls on 18 ply deck on on 10-85 s/w firings on 150\*50 s/w joists @ 400 c/c on joist hangers

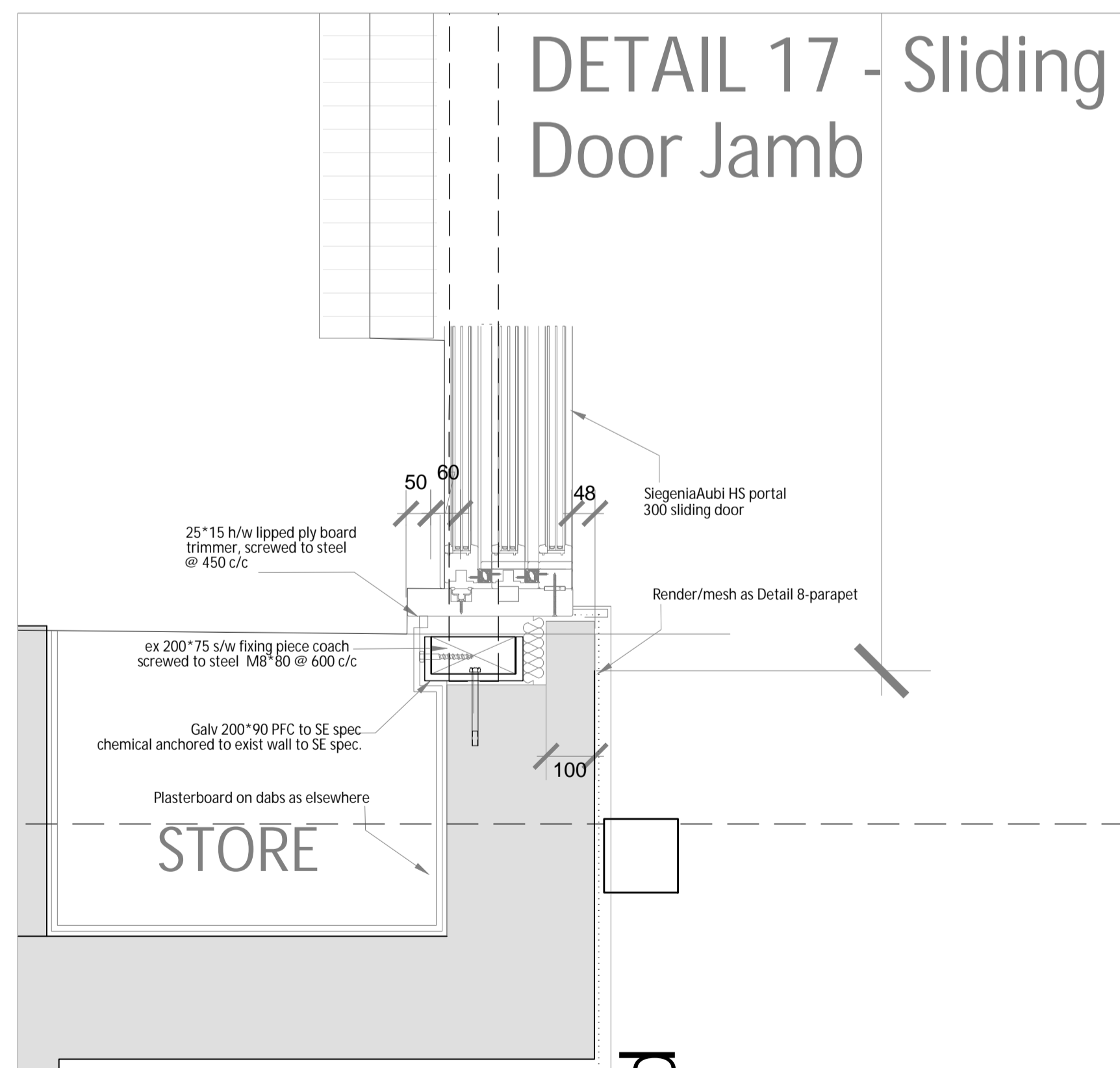
## DETAIL 8 -parapet



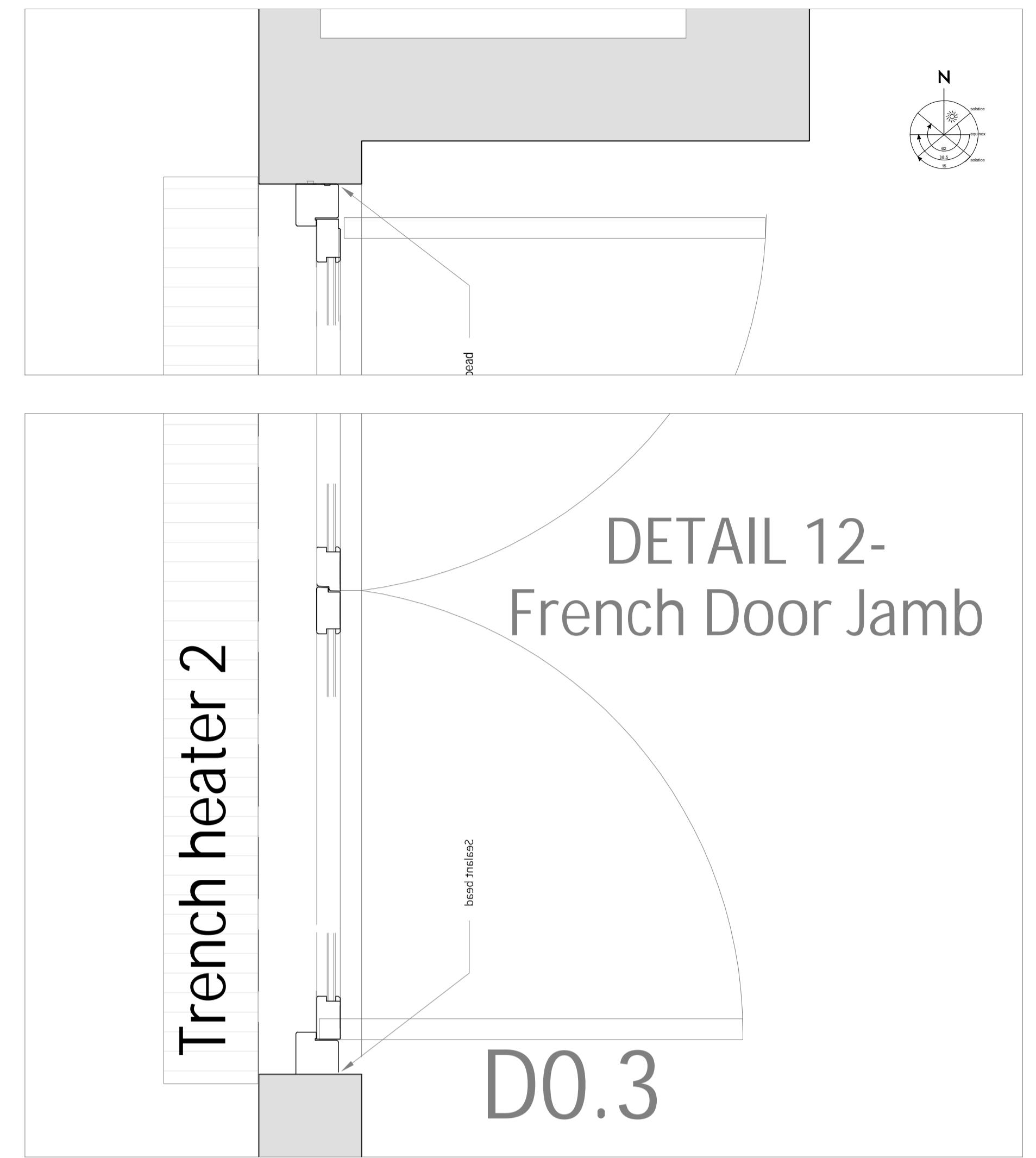
## DETAIL 8 - kitchen/terrace threshold



## DETAIL 16 - Sliding Door Jamb

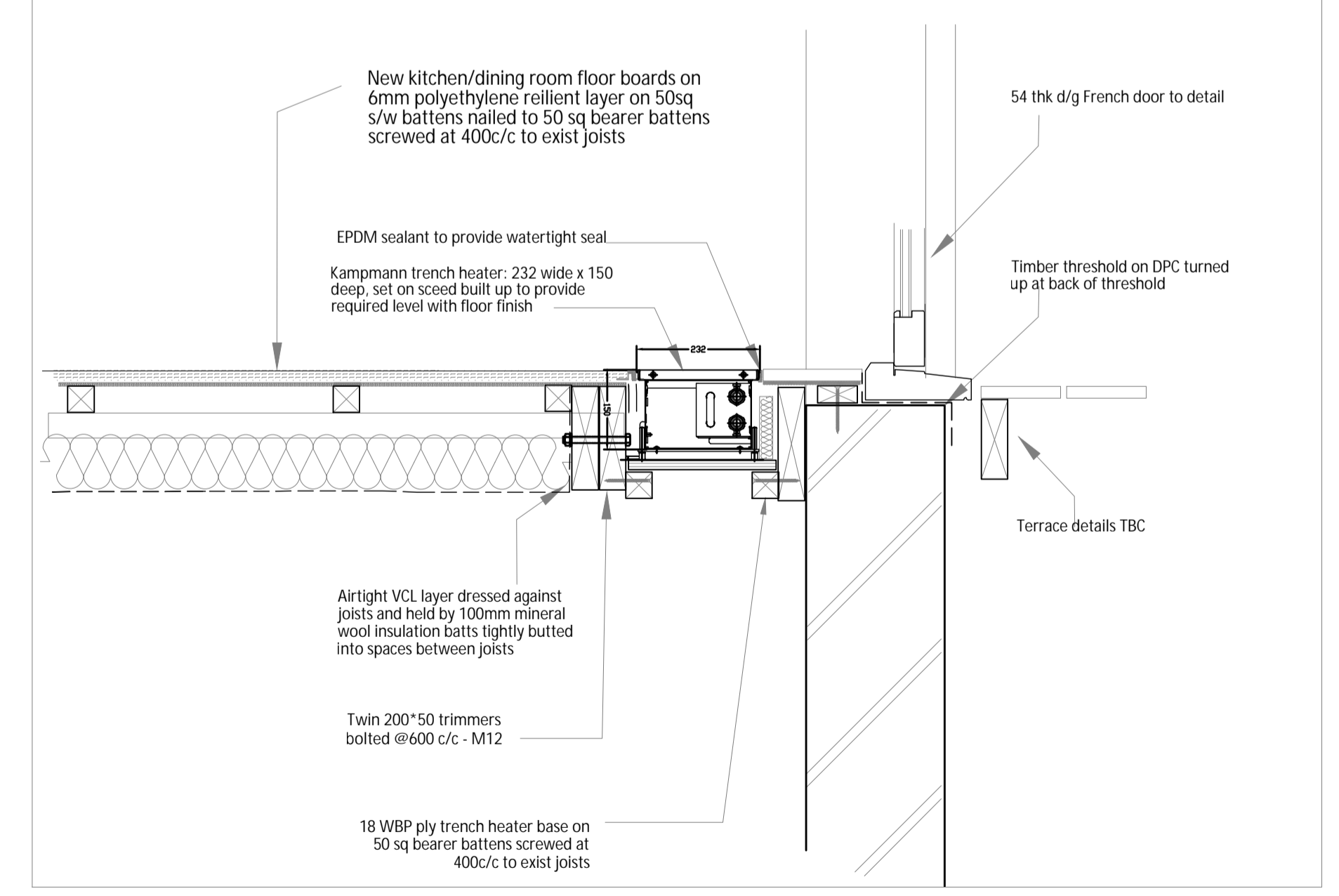


## DETAIL 17 - Sliding Door Jamb

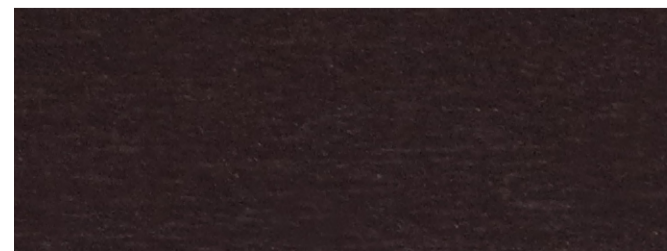


## DETAIL 12- French Door Jamb

## DETAIL 12 - French Door Threshold



Notes  
**ALL EXTERNAL DOORS TO BE IN ACCOYA TIMBER,**  
**ALL FINISHED WITH TEKNOS STAIN: FOREST INSPIRATIONS FI 046**  
**ALUMINIUM WALL CAPPINGS TO BE FINISHED IN PPC**  
**COLOUR: GRAPHITE GREY RAL 7024**



TEKNOS STAIN: FOREST INSPIRATIONS FI 046



POLYESTER POWDER COAT: RAL 7024

Project Address 24 Makepeace Avenue, N6 6EJ	Drawing No.: 2008MAK_2320	Revision:
	Scale @ A1: 10 + 2	Scale @ A3: Rev. Date:
Drawing Title Terrace Roof/Floor Details	Drawn by: Rb	Date: 11.02.2021
	Status: Co-ordination	

PARDON CHAMBERS ARCHITECTS