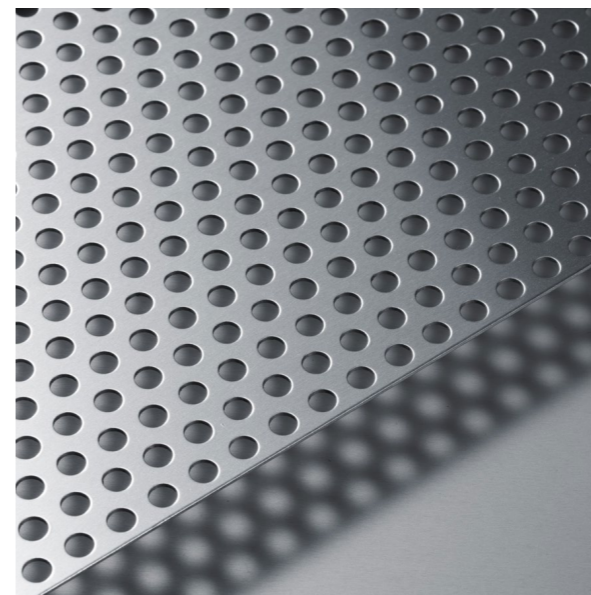
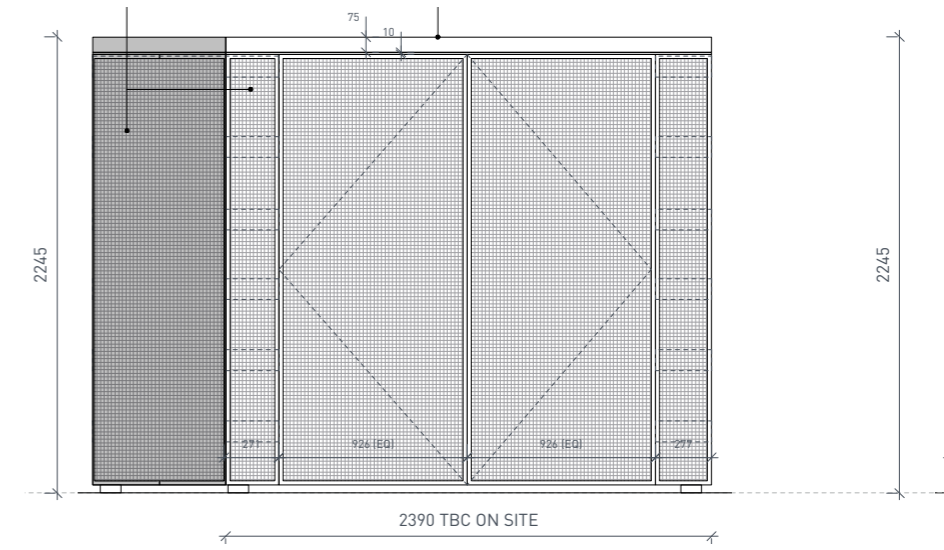
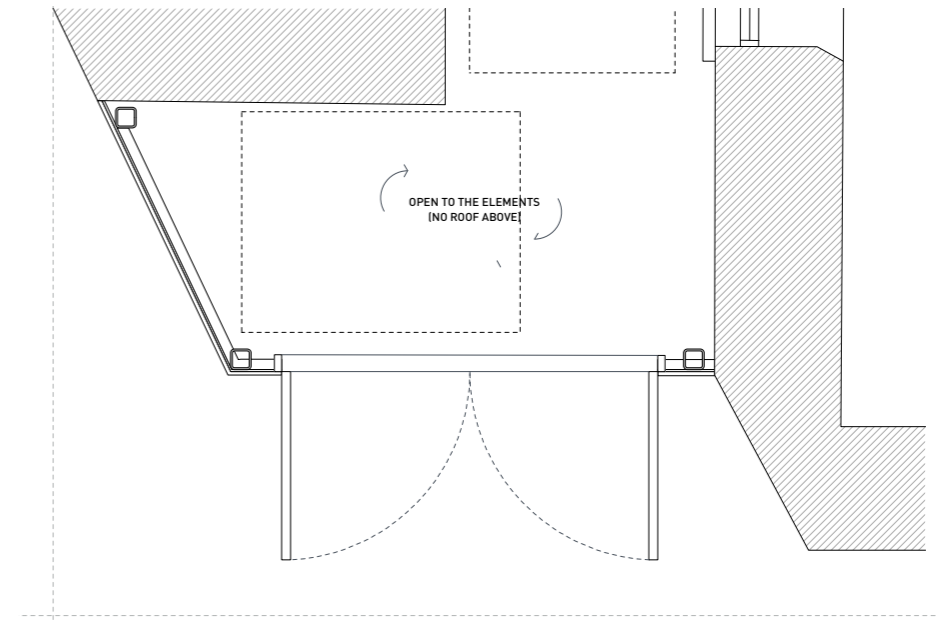


EXTERNAL CLADDING
CONT'D

- 03 BIKE / BIN STORAGE CLADDING
Spec: PPC aluminium perforated wall cladding panels GA WC3 (RAL 9004 Signal Black), with secret fixings to 2mm split horizontal battens. Perforation pattern: 12mm round, staggered, 40% open area.

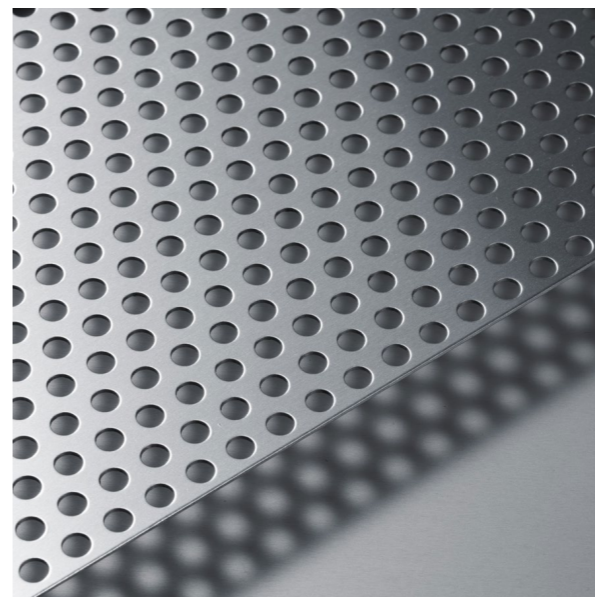
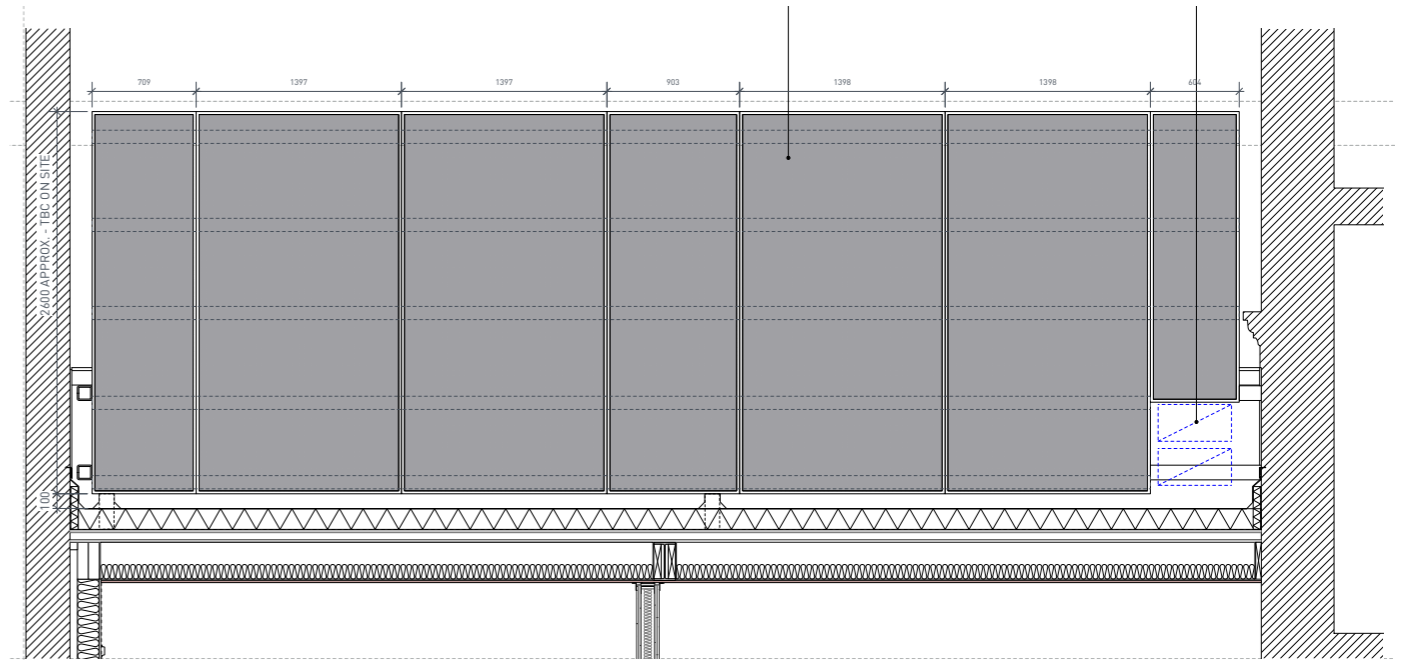
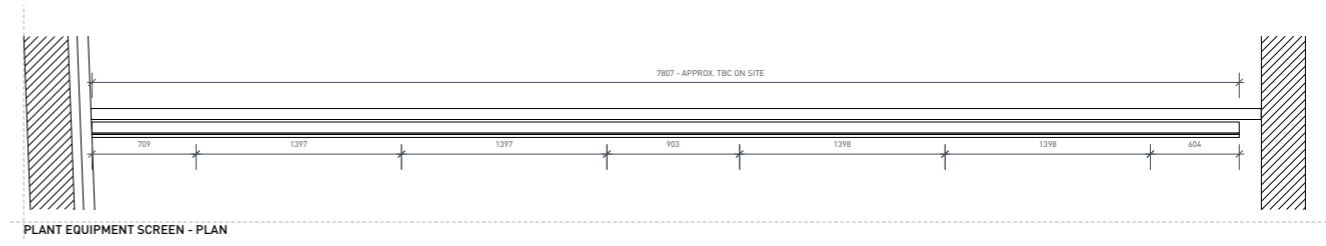


Bike shelter & plant screen cladding (in RAL 9004)



RAL 9004 - Signal Black

- 04 PLANT SCREEN CLADDING
 Spec: PPC aluminium perforated wall cladding panels GA WC3 (RAL 9004 Signal Black), with secret fixings to 2mm split horizontal battens. Perforation pattern: 12mm round, staggered, 40% open area.



Bike shelter & plant screen cladding (in RAL 9004)



RAL 9004 - Signal Black

ROOF COVERING

05 MAIN ROOF REPLACEMENT
Spec: Estillo 15 Blue Grey Slate (LV15), Very Smooth, Deviation from declared length +/- 5mm, Deviation from declared width +/- 5mm

Flashing: Lead
Colour: Blue Grey

Note: Existing building rainwater goods to be made good, repair and repaint existing cast iron RW goods.

FLAT ROOF (Side extension only)
Spec: Liquid applied waterproof membrane
Colour: RAL 7015 Slate Grey



Slate

EXTERNAL PAVING

- 06 COURTYARD EXTERNAL PAVING
Spec: Sawn granite setts
Colour: Light grey / Silver
Dimensions: 200x100x50mm



Granite setts

EXTERNAL PAVING
CONT'D

- 07 TERRACE EXTERNAL PAVING
Spec: 40mm Portland Stone Honed Sandstone

- 08 FRONT EXTERNAL PAVING
Spec: Sawn granite setts
Colour: Light grey / Silver
Dimensions: 200x100x50mm



Portland stone paving precedent

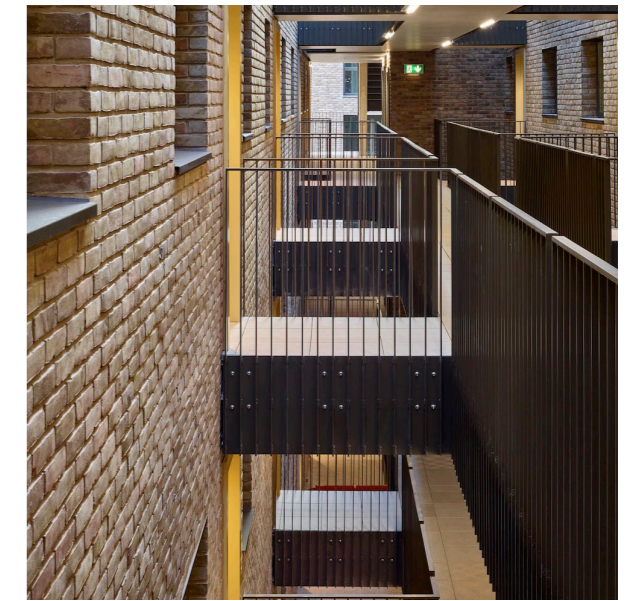
EXTERNAL METALWORK

Please refer to detailed drawings for further information

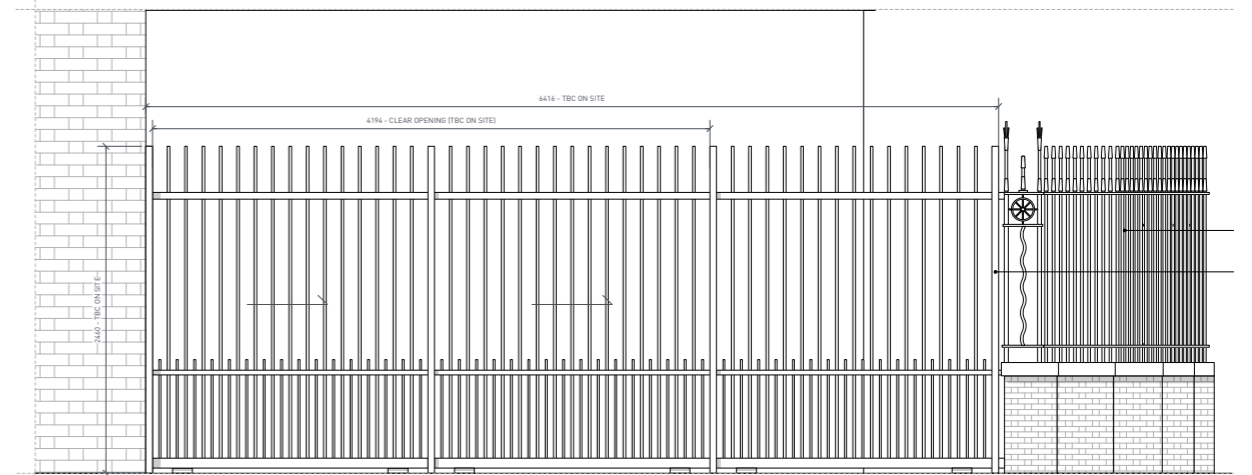
- 09 NEW RAILINGS
Spec: 40x10mm mild steel flat bar railing with dressed and polished welds (ISO 5817 Level D), galvanised and sprayed; Where flat plates are proposed to side fix the balustrades back to the structure allow for countersunk fixings (painted to match balustrade).
Colour: RAL 9004 Signal Black
- 10 VEHICLE GATE
Spec: Automatic metal sliding gates
Colour: RAL 9004 Signal Black
Please refer to detailed drawings for further information
- 11 PEDESTRIAN GATE
Spec: Single gate
Colour: RAL 9004 Signal Black
Please refer to detailed drawings for further information
- 12 EXISTING RAILINGS
Spec: Stripped, made good, primed and painted
Colour: RAL 9004 Signal Black



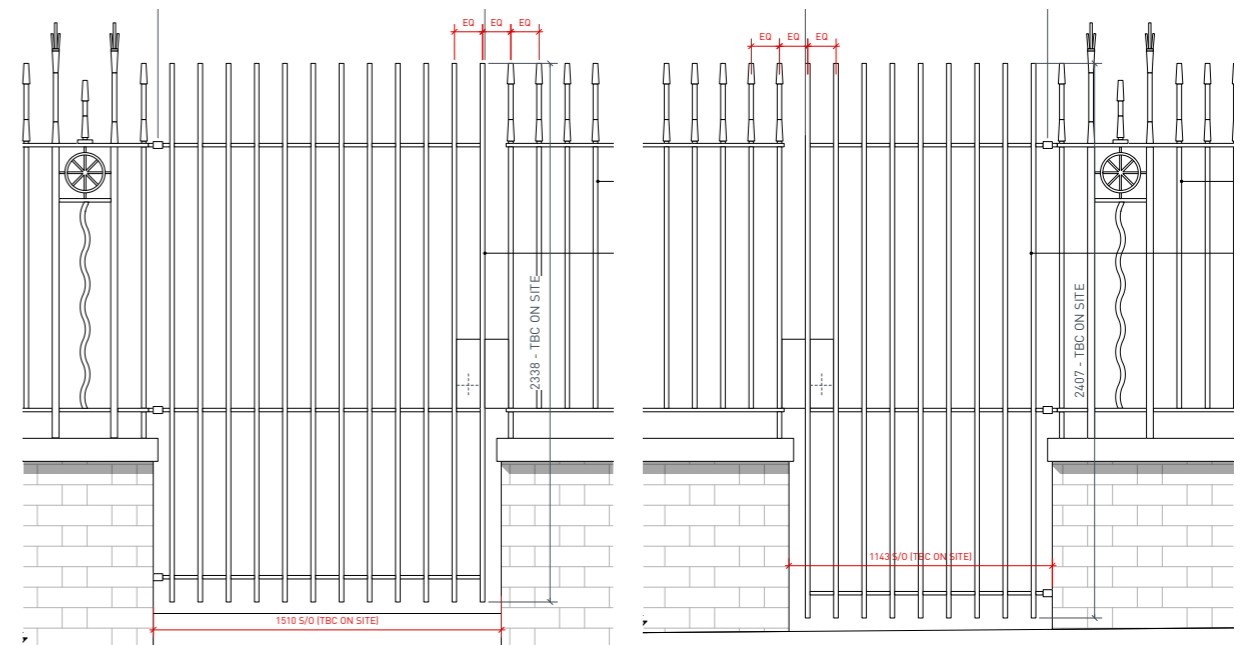
Flat bar railing precedent



Flat bar railing precedent



Vehicle gate



Pedestrian gates

LANDSCAPE & MISC.

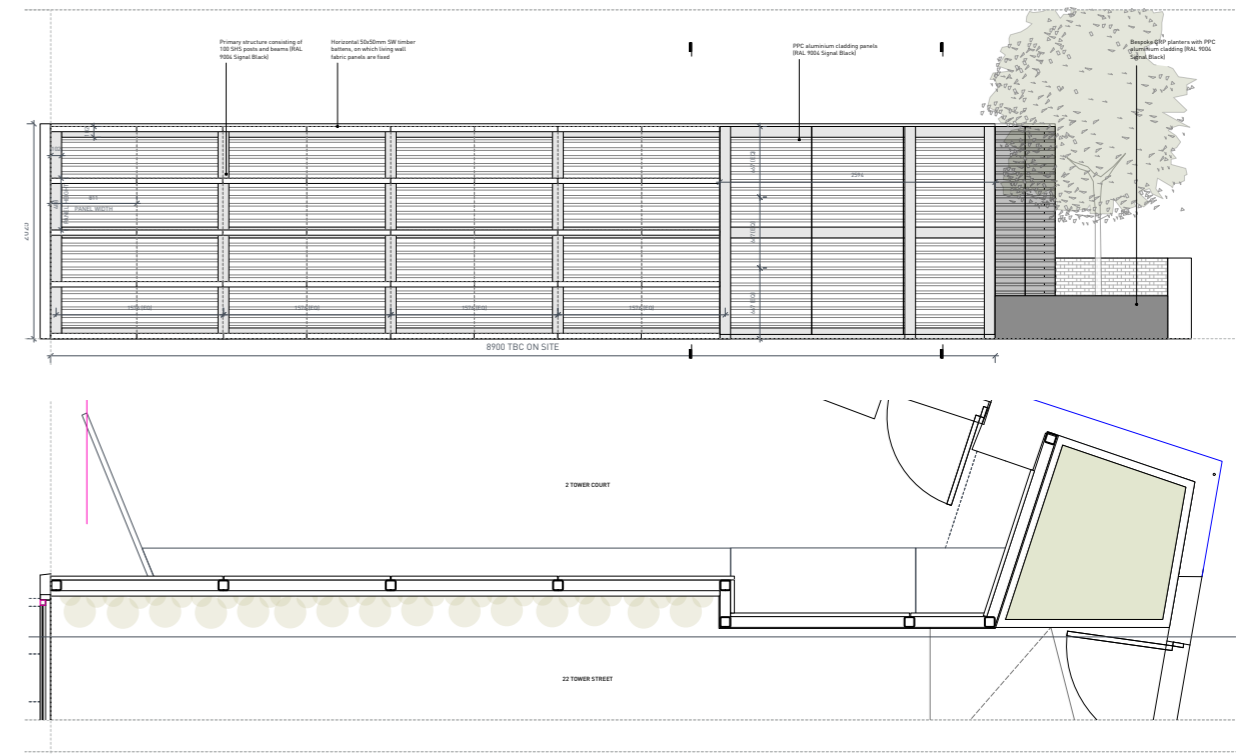
- 13 PLANTERS
Spec: GRP planters overclad with PPC aluminium panels
Colour: RAL 9005 Signal Black
- 14 LIVING WALL
Supplier: Scotsscape
Spec: Living Wall modular system
- 15 SCREEN (TO 2 TOWER COURT)
Primary structure consisting of 100mm SHS posts and beams (RAL 9004 Signal Black)
Horizontal 50x50mm SW timber battens, on which living wall fabric panels are fixed
- 16 RAINWATER GOODS - SIDE & REAR EXTENSION
Spec: Harmer Roof AV Aluminum Rainwater Outlets' with proprietary leaf guards



Living Wall precedent



GRP planters



WINDOWS

Please refer to detailed drawings for further information

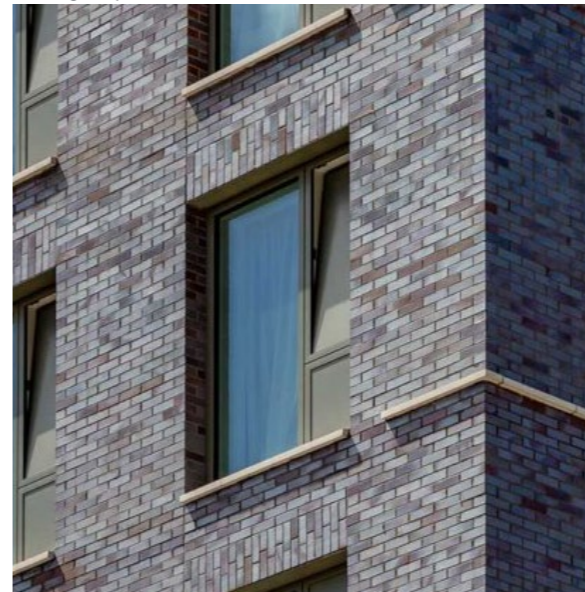
- 18 NEW HARDWOOD WINDOWS
Spec: Hardwood casement windows
Colour: Painted white
- 19 NEW HARDWOOD DOORS
Spec: Hardwood panelled and/or glazed doors.
Refer to detailed drawings.
Colour: Painted black
- 20 MINIMAL FRAME GLAZING
Spec: Keller Minimal frame fixed & 2-track sliding glass window, with recessed frame and max. 25mm sightlines
Colour: RAL 9004 Signal Black
- 21 METAL WINDOWS
Spec: IdealCombi Double glazed aluminium windows, max 53mm wide profile. Single pane with vertical or horizontal glazing bar
Colour: RAL 9004 Signal Black
- 22 ROOFLIGHTS
Spec: Bespoke 'Frameless' appearance structural walk on rooflight, Fixed/Obscured



Rooflights precedent



White painted finish



Metal windows precedent



Minimal frame windows precedent



Metal windows - Profiles



Minimal frame windows - Profiles

Claridge Architects Ltd
Queens Studios, Studio 6
121 Salisbury Road
London NW6 6RG

T +44 (0)208 969 9223
E info@claridgearchitects.com