

# PLANNING

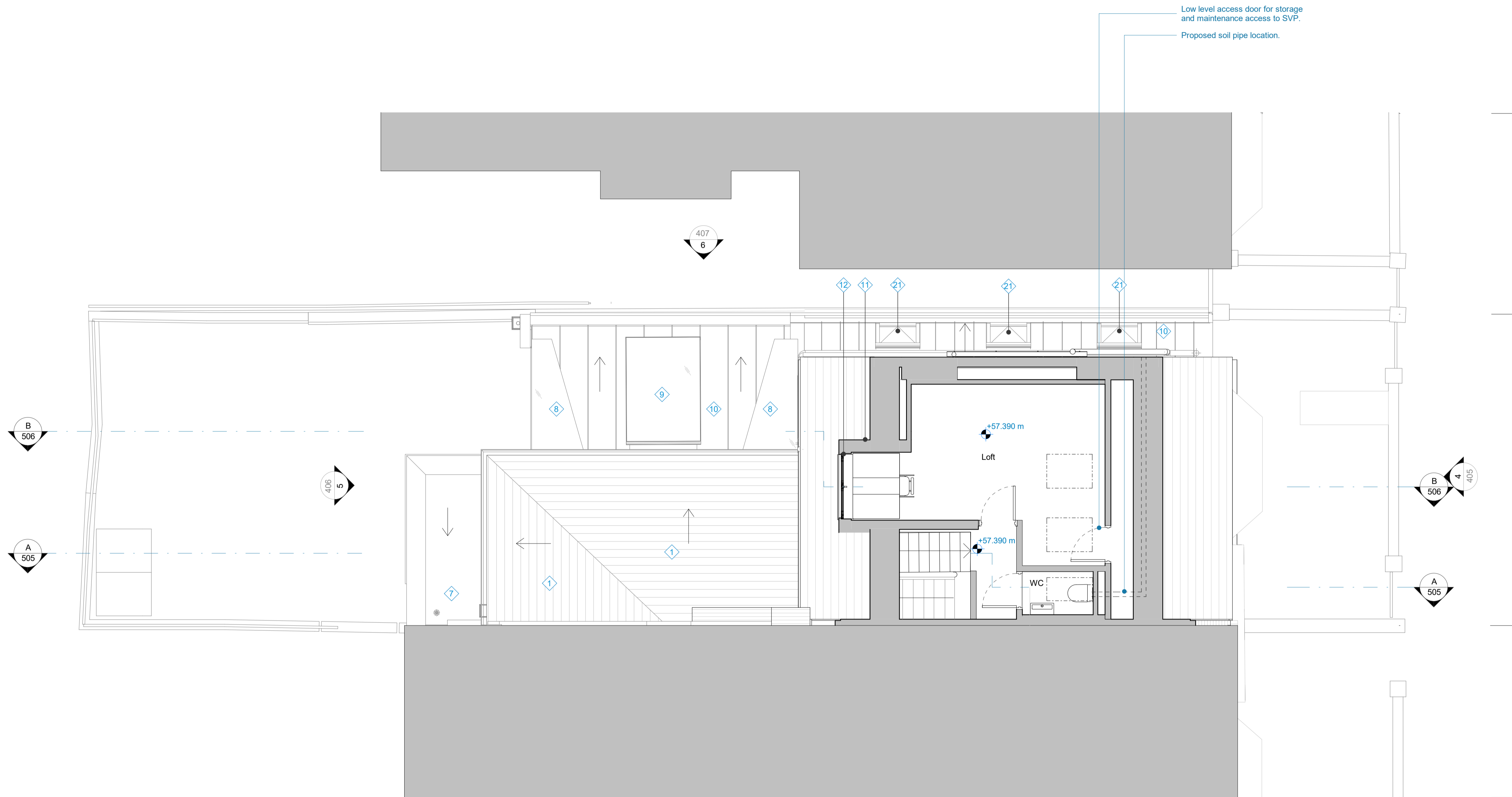
The contractor must check dimensions on site. Only figured dimensions to be worked from.

Any discrepancies must be reported to the architect before proceeding.

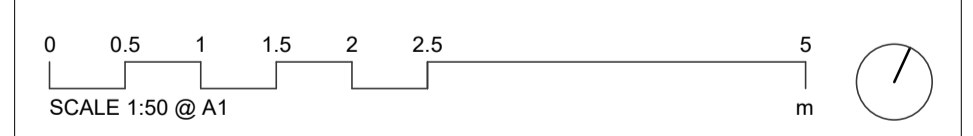
NOTES: This drawing is © copyright Platform 5 Architects LLP

## PROPOSED MATERIALS KEY

- 1 Existing roof tiles
- 2 London stock brick wall
- 3 Dark grey PPC aluminium framed double glazed corner window with opening vent
- 4 Dark grey PPC aluminium framed double glazed external door and fixed panel
- 5 Closet wing extension in London stock brickwork similar to existing brickwork. Height to match neighbouring closet wing extension
- 6 Cast stone window sill to new corner window
- 7 Single ply membrane flat roof behind brick parapet. Dark grey finish to membrane
- 8 Double glazed fixed rooflight
- 9 Double glazed opening rooflight
- 10 Dark grey zinc standing seam roof
- 11 Dark grey zinc standing seam cladding to new rear dormer cheeks
- 12 Dark grey PPC aluminium framed double glazed opening window
- 13 Conservation style, flush double glazed opening rooflights to loft extension. Velux GGL SD5N2 MK06 1180x780mm installed to manufacturer's recommendations
- 14 Conservation style, flush double glazed opening rooflight to loft extension Velux GGL SD5N2 CK06 1180x550mm installed to manufacturer's recommendations
- 15 Second floor tiled terrace deck
- 16 New hipped roof to accommodate rear dormer extension. Existing tiles to be reused where possible
- 17 Railing and wall coping to second floor terrace parapet similar to existing at 31 Estelle Road.
- 18 Dark grey PPC aluminium framed double glazed casement windows
- 19 Double glazed fire rated timber framed glass door
- 20 Gate clad in brick in garden wall pattern to blend in with existing garden wall. Gate to be lockable from both sides
- 21 Double glazed opening rooflight
- 22 Existing painted timber boards
- 23 New replacement timber sash window with dark grey painted frames and glazing patterns and proportions to match existing



Rev.	Date	Description	Checked
P13	25.02.21	Issued for Planning	MF
P12	22.01.21	Issued for Information	MF
P11	15.01.21	Issued for Information	MT
P10	08.01.21	Issued for Information	NC
P9	18.12.20	Issued for Information	NC
P8	17.12.20	Issued for Information	PM
P7	26.11.20	Issued for Information	NC
P6	09.11.20	Issued for Information	MT
P5	15.10.20	Issued for Information	MT
P4	08.09.20	Issued for Information	PM
P3	21.08.20	Issued for Information	PM
P2	10.07.20	Issued for Information	PM
P1	13.03.20	Issued for Information	PM



**Platform 5**  
architects

First Floor  
217 Mare Street  
London  
E8 3QE

t 020 7031 5661  
e info@platform5architects.com  
w www.platform5architects.com

PROJECT TITLE:  
**33 Estelle Road**

DRAWING TITLE:  
**Proposed Loft Plan**

ISSUE DATE: **March 2020** SCALE @ A1: **1:50** SCALE @ A0: **1:100**

PROJECT NO.: **19-104** DRAWING NO.: **106** REVISION: **P13**