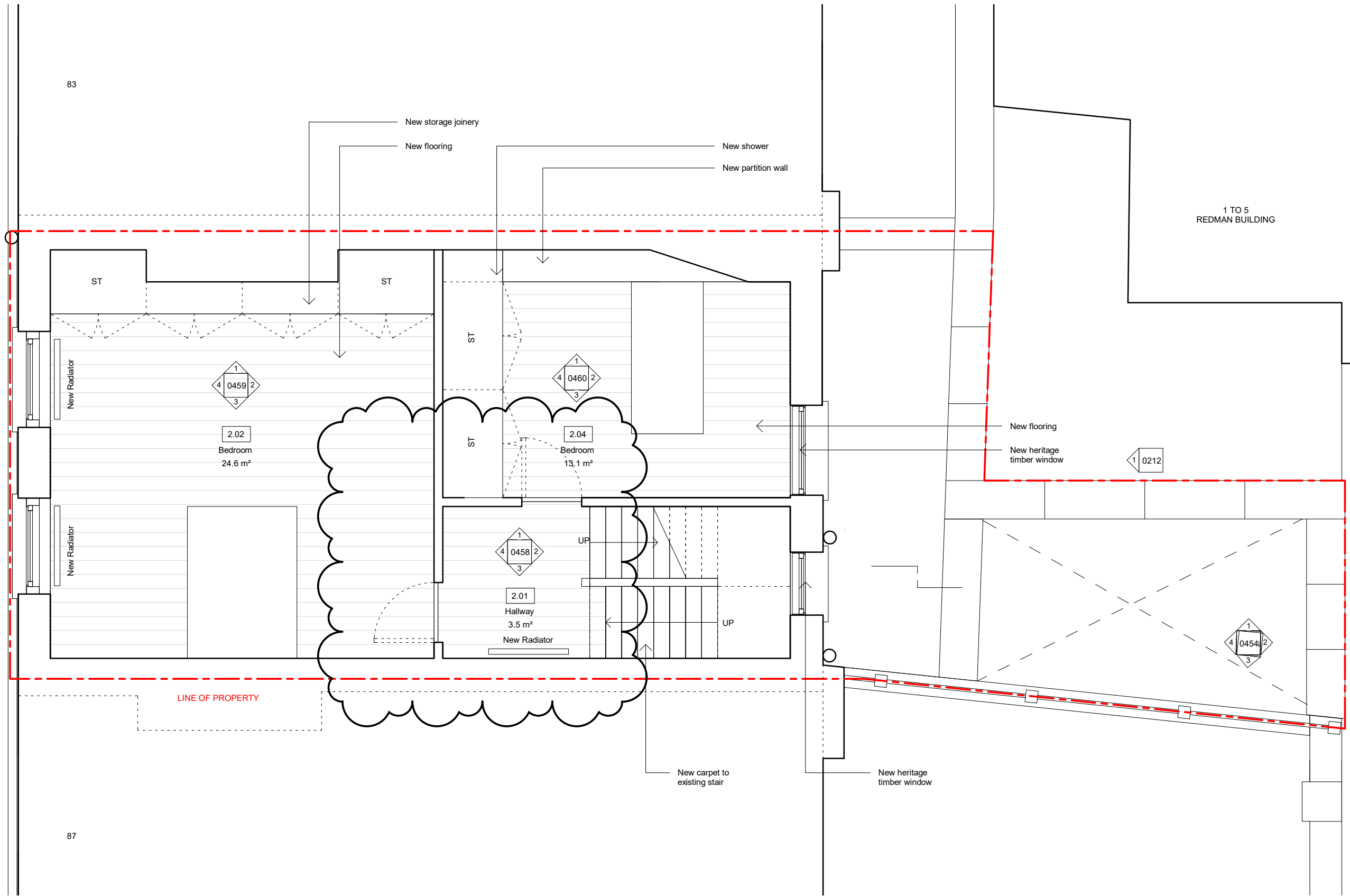


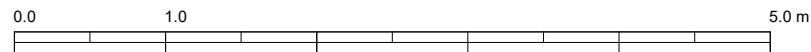
Design Lead: MATHESON WHITELEY Unit 2, 1-7 Orsman Road, London N1 5RA +44 (0)207 033 3589 studio@mathesonwhiteley.com	NOTES All dimensions are from structure-to-structure unless indicated otherwise. Elements of structure and services are indicated for coordination purposes. For full structural and services layouts refer to Structural and Services Engineer's drawings.	Do not scale directly from drawing. All dimensions to be checked on site prior to construction or fabrication of any elements. Any discrepancies between figured dimensions to be reported to architect for clarification prior to commencing work. For legend see cover sheet. © Copyright reserved.	REV B	DATE COMMENTS 26.02.21 Planning amendments	Project No. 116 Scale 1 : 50	
			Project 85, Leather Lane, NW1	Origination Date 20.09.01	Drawing Title Existing Second Floor Plan	Status Planning amendments
			Drawing No. 0104	Rev B		



83



87



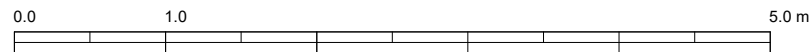
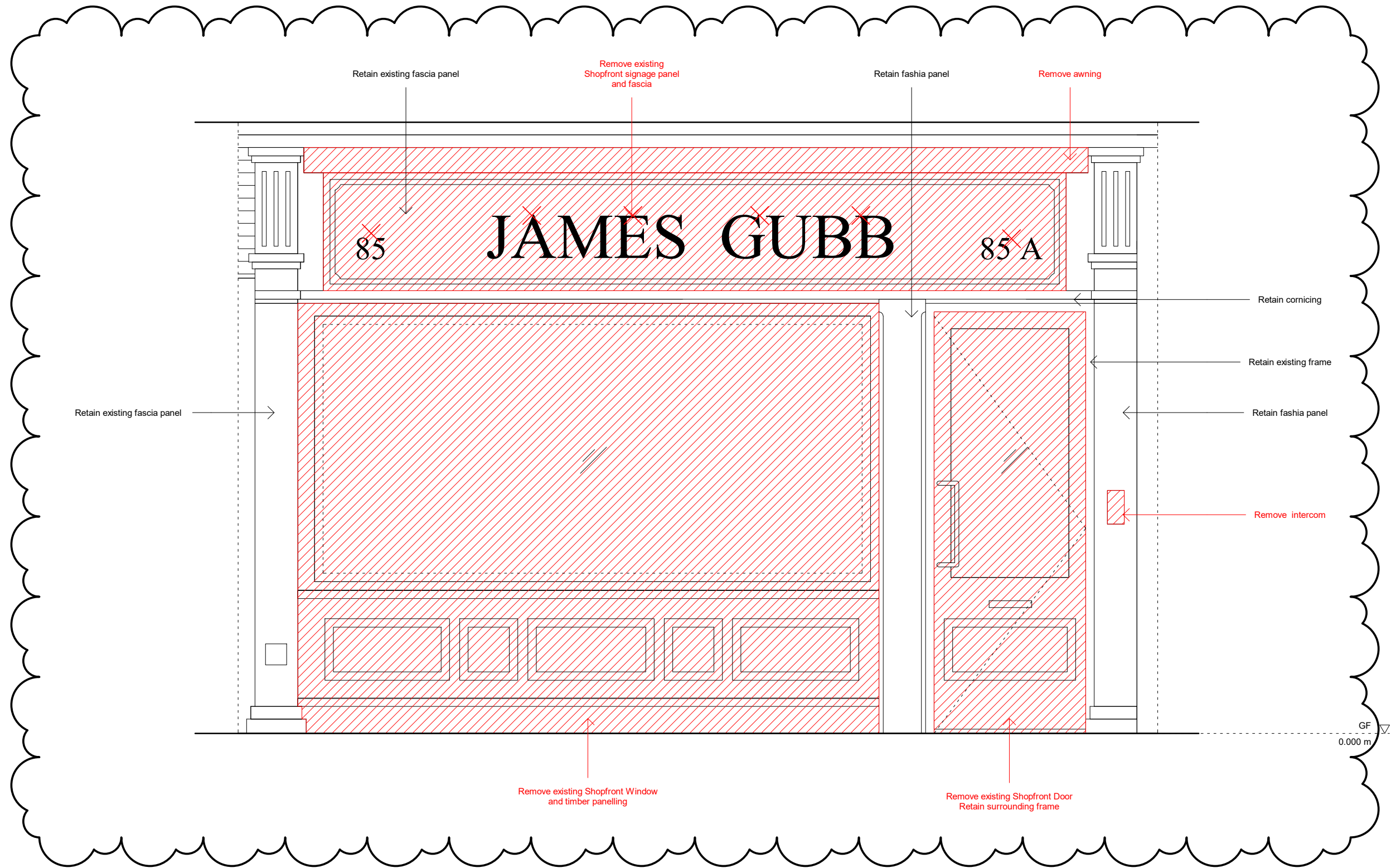
Design Lead:
MATHESON WHITELEY
 Unit 2, 1-7 Orsman Road,
 London N1 5RA
 +44 (0)207 033 3589
 studio@mathesonwhiteley.com

NOTES
 All dimensions are from structure-to-structure unless indicated otherwise.
 Elements of structure and services are indicated for coordination purposes. For full structural and services layouts refer to Structural and Services Engineer's drawings.

Do not scale directly from drawing. All dimensions to be checked on site prior to construction or fabrication of any elements.
 Any discrepancies between figured dimensions to be reported to architect for clarification prior to commencing work.
 For legend see cover sheet.
 © Copyright reserved.

REV	DATE	COMMENTS
B	26.02.21	Planning amendments

Project No.	116	Scale	1 : 50
Project	85, Leather Lane, NW1	Origination Date	20.09.01
Drawing Title	Proposed Second Floor Plan	Status	Planning amendments
Drawing No.	0114	Rev	B



Design Lead:
MATHESON WHITELEY
 Unit 2, 1-7 Orsman Road,
 London N1 5RA
 +44 (0)207 033 3589
 studio@mathesonwhiteley.com

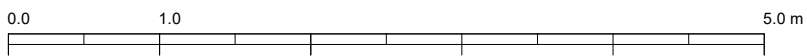
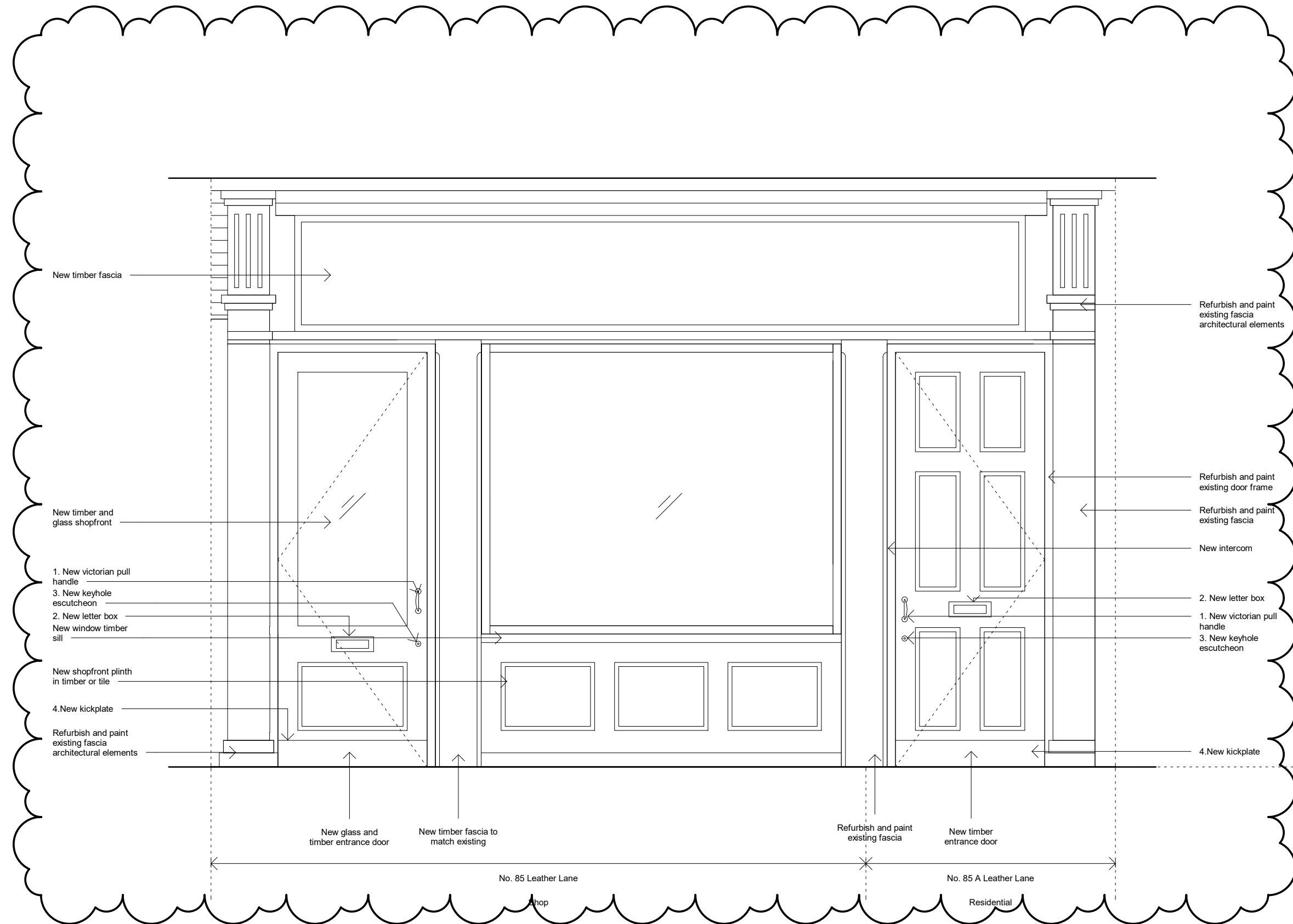
NOTES
 All dimensions are from structure-to-structure unless indicated otherwise.
 Elements of structure and services are indicated for coordination purposes. For full structural and services layouts refer to Structural and Services Engineer's drawings.

Do not scale directly from drawing. All dimensions to be checked on site prior to construction or fabrication of any elements.
 Any discrepancies between figured dimensions to be reported to architect for clarification prior to commencing work.
 For legend see cover sheet.
 © Copyright reserved.

REV	DATE	COMMENTS
A	26.02.21	Planning amendments

Project No.	116	Scale	1 : 25
Project	85, Leather Lane, NW1	Origination Date	20.09.01
Drawing Title	Existing Shopfront Elevation	Status	Planning amendments
		Drawing No.	0502
		Rev	A

Project No.	116	Scale	1 : 25
Project	85, Leather Lane, NW1	Origination Date	20.09.01
Drawing Title	Existing Shopfront Elevation	Status	Planning amendments
		Drawing No.	0502
		Rev	A



Design Lead:
MATHESON WHITELEY
 Unit 2, 1-7 Orsman Road,
 London N1 5RA
 +44 (0)207 033 3589
 studio@mathesonwhiteley.com

NOTES
 All dimensions are from structure-to-structure unless indicated otherwise.
 Elements of structure and services are indicated for coordination purposes. For full structural and services layouts refer to Structural and Services Engineer's drawings.

Do not scale directly from drawing. All dimensions to be checked on site prior to construction or fabrication of any elements.
 Any discrepancies between figured dimensions to be reported to architect for clarification prior to commencing work.
 For legend see cover sheet.
 © Copyright reserved.

REV	DATE	COMMENTS
A	26.02.21	Planning amendments

Project No.	116	Scale	1 : 25
Project	85, Leather Lane, NW1	Origination Date	20.09.01
Drawing Title	Proposed Shopfront Elevation	Status	Planning amendments
		Drawing No.	0512
		Rev	A