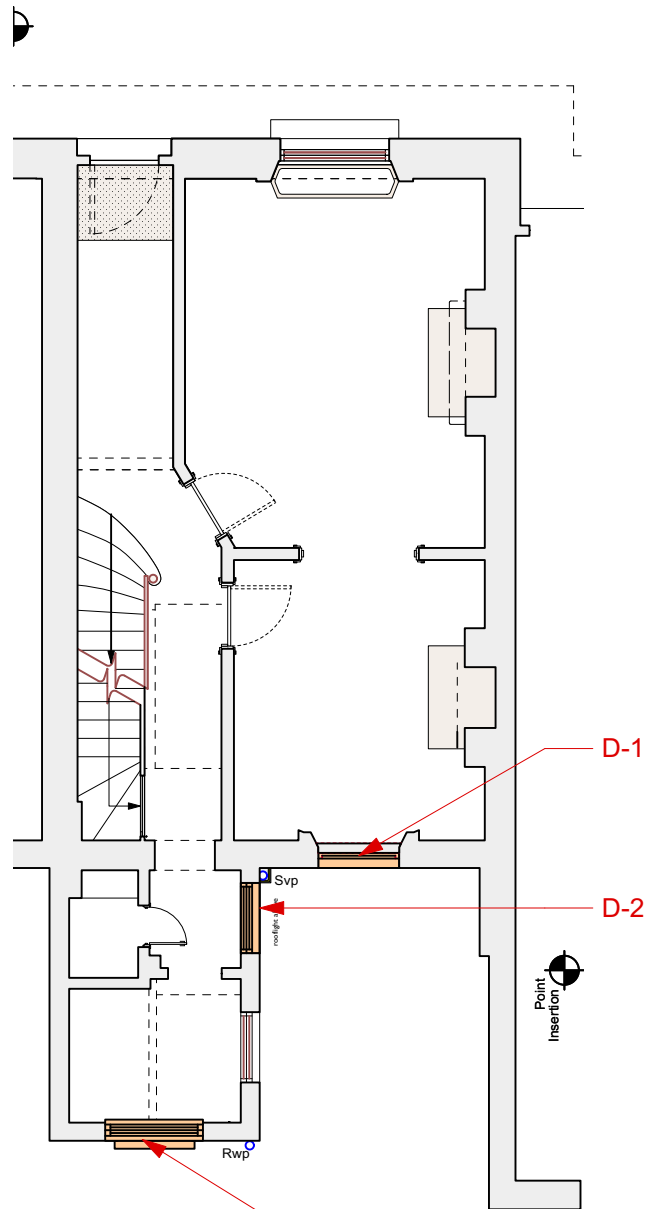
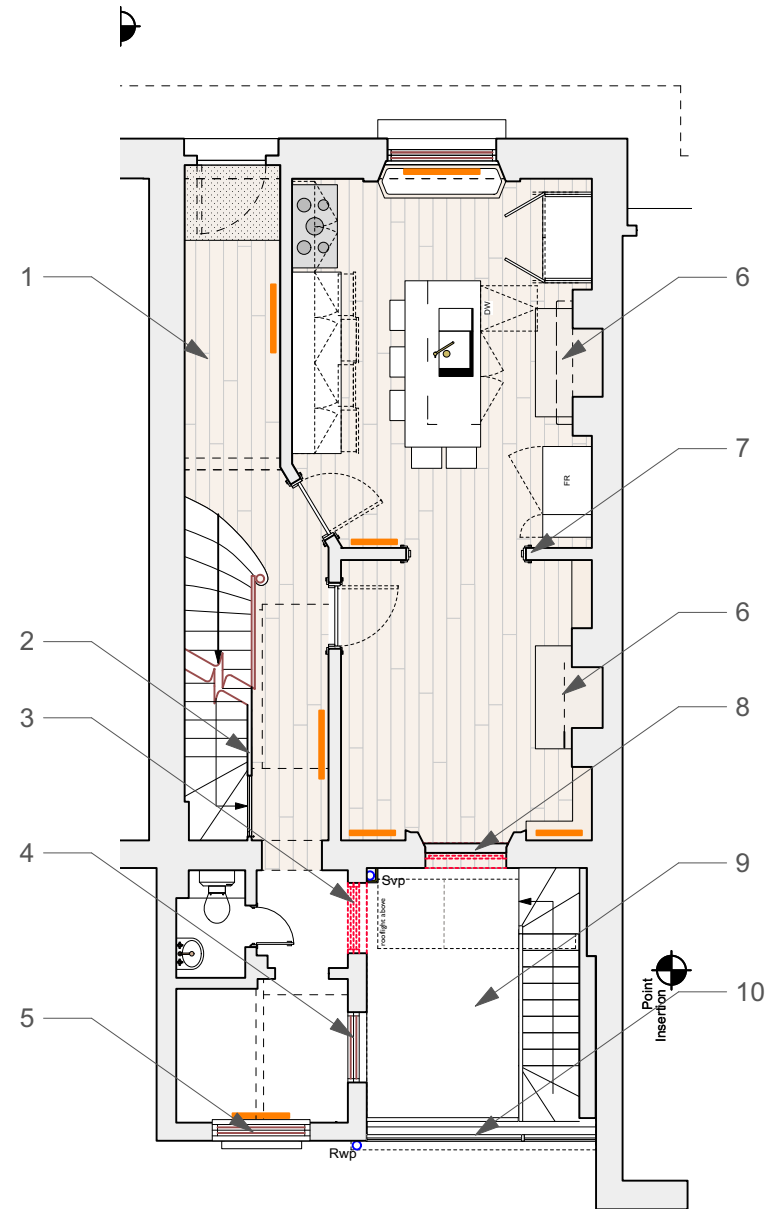


EXISTING PLAN



DEMOLITION PLAN



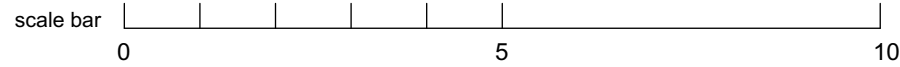
PROPOSED PLAN

DEMOLITION

- D1. Remove low level external bircks only within the existing window reveal.
- D2. Remove low level bricks to create an opening within the existing window reveal.
- D3. Remove bricks to create widnow opening.

PROPOSED WORKS

1. Retain existing floorboards, light sand and wax
2. Retain and make good timber glazed screen under stairs.
3. Create new opening within existing window width
4. Retain existing external window.
5. New timber sash window
6. Retain existing fire place
7. Retain existing opening
8. Retain all timber architectural elements. Remove external low level brickwork and allow for la ow level removable timber panel.
9. New extension floor
10. New External lightweight glazed metal windows



REV	DATE	DESCRIPTION	CHK	NOTES
	15/11/2020	PLANNING	JF	
02	22/02/21	PLANNING		

RETROUVIUS
 2A Ravensworth Road | London
 NW10 5NR | +44(0)20 8960 8676
 projectenquires@retrouvius.com

5 REGENTS PARK TERRACE
 GROUND FLOOR PLAN
 PLANNING
 173_PL-100
 SCALE@A3