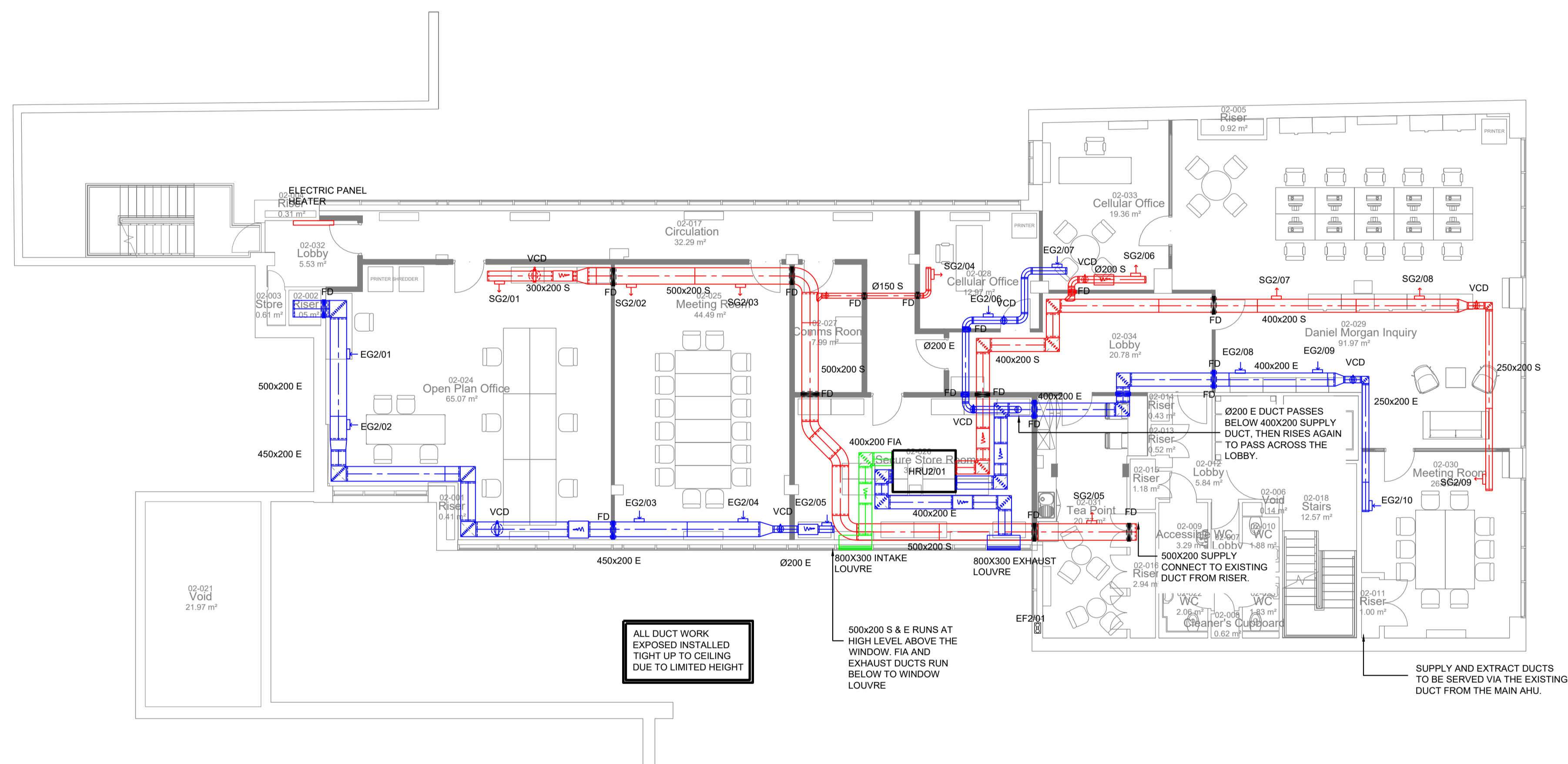


Do not scale from drawings. Verify all dimensions on site prior to construction. This drawing is to be read in conjunction with all relevant documents and drawings. Report all discrepancies to Estates Directorate immediately. No unauthorised use, disclosure, storage or copying.

1. ALL DUCTWORK AND FITTINGS TO BE FABRICATED AND INSTALLED IN ACCORDANCE WITH DW1144 AND AS DETAILED ON THE RELEVANT LAYOUT DRAWING. ALL DUCTWORK PHYSICAL SIZES LOCATION AND HEIGHT TO BE CONFIRMED BY WAY OF SITE SIZES.
2. ALL EXTERNAL DUCTWORK, FRESH AIR DUCTWORK AND CONDITIONED SUPPLY DUCTWORK TO BE THERMALLY INSULATED IN ACCORDANCE WITH BS5422:2009
3. WHERE SEVERAL RANGES OF DUCTWORK ARE INDICATED AS BEING INSTALLED SIDE BY SIDE THEN ADEQUATE SPACE SHALL BE ALLOWED FOR FULL AND PROPER APPLICATION OF THERMAL INSULATION TO EACH DUCT.
4. ALL DUCTWORK SHALL BE SUPPORTED BY MEANS OF A LIGHTWEIGHT CHANNEL FIXED TO STRUCTURE, THREADED DROP RODS, DUCT SUPPORT RAIL WITH ISOLATION STRIP AND FLAT BAR KEEPER AROUND DUCT PERIPHERY.
5. VOLUME CONTROL DAMPERS: TO BE OF THE OPPOSED BLADE TYPE SUITABLE FOR RECTANGULAR AND/OR CIRCULAR DUCTWORK TO THE SIZES NOTED ON THE DRAWING
6. ALL MECHANICAL SERVICES SHALL BE ARRANGED FOR TESTING AND COMMISSIONING IN ACCORDANCE WITH THE GUIDANCE GIVEN BY CIBSE COMMISSIONING CODES AND BSRIA COMMISSIONING GUIDES.
7. 3 COPIES OF THE OPERATING AND MAINTENANCE MANUAL WILL BE HANDED OVER TO THE BUILDING OCCUPIER.



DRAFT

A	24/02/21	DRAFT DESIGN	DH	DH
AMENDMENTS			DATE	

<p>Estates Directorate</p>	Estates Directorate 102 Petty France London SW1H 9AJ			
	Site	28 KIRBY STREET		
Security Classification	OFFICIAL			
Drawing Number	366930-5376-AMK-FBH-02-DR-M-5701-S2-00-D0100			
Project Name <small>if applicable</small>	HMCTS FLEETBANK HOUSE			
Dwg Title	SECOND FLOOR VENTILATION LAYOUT			
E-PIMS	366930	BPRN No. <small>if applicable</small>	5376	Rev Ref 00
Drawn By:	AMK	DATE:	FEB 2021	SCALE 1:100