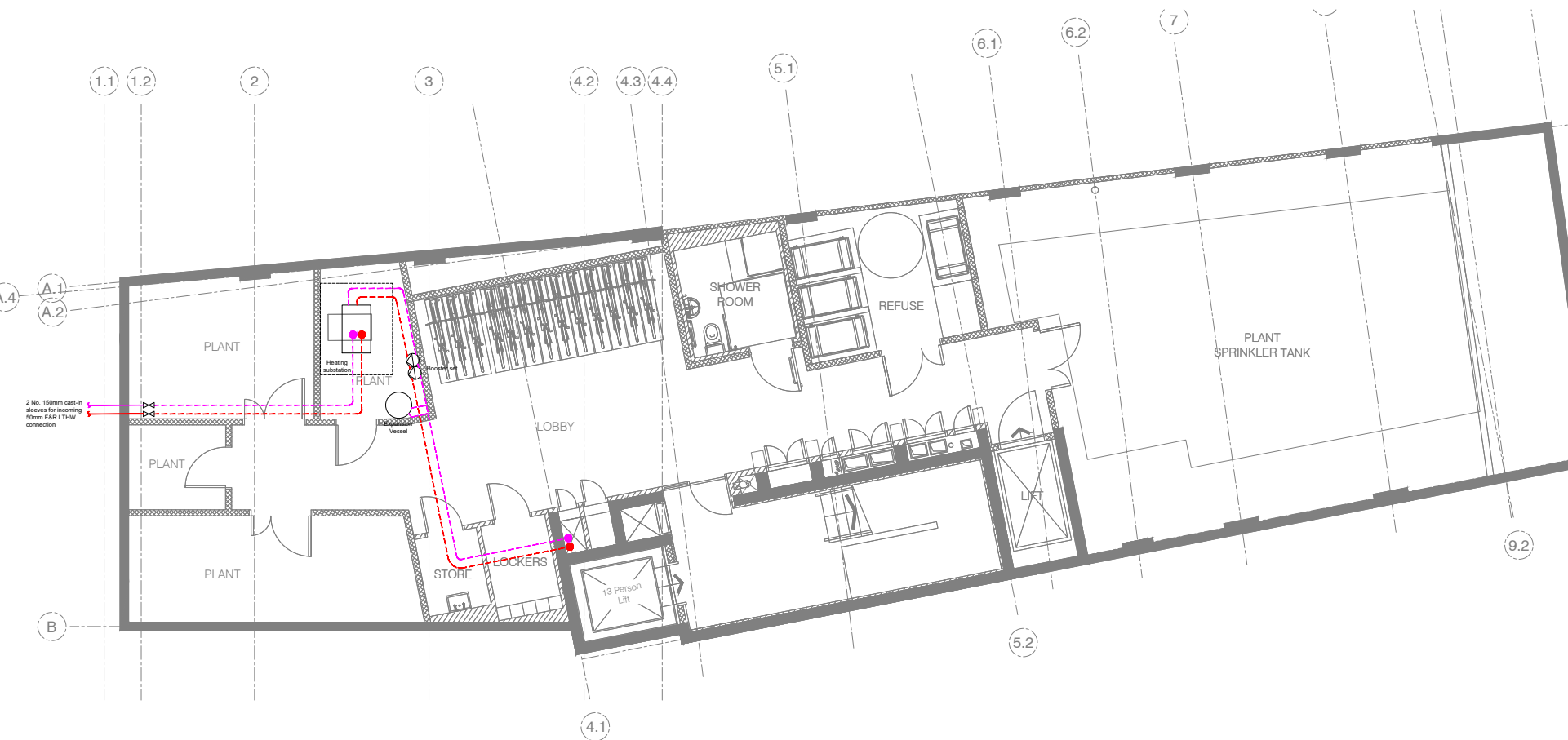


- Notes
1. This drawing is not to be scaled. Work to figured dimensions only.
  2. This drawing is to be read in conjunction with all relevant services, architectural and structural drawings.
  3. This drawing shall not be used for detail or measurement of architectural or structural works.
  4. All dimensions in millimeters unless stated otherwise.
  5. All datum levels in meters unless stated otherwise.
  6. For equipment details refer to technical specifications.
  7. Heating substation dimensions based on Danfoss DGA 1 Mid 120, or equal and approved. Selection and full design to be finalised in future, once a connection to a district heating network becomes available, as temperatures may vary.

- Legend
- Flow LTHW pipe
  - Return LTHW pipe
  - Pipe segment to be installed as part of the development
  - Pipe segment to be installed at a later date in case of connection to a district heating network



T1 03/03/2021 Label updated RP SH  
Rev Date Description GSH CH

Architect  
**m+mr**

Client  
CHH London LTD

Project  
295 High Holborn

Drawing Title  
LTHW - Planning Condition 25  
Plantroom Layout  
Indicative district heating pipes route  
Basement Level

ScotchPartners

Building Services Engineering | Sustainability | Acoustics

Scotch Court 020 3944 9400  
151 Farringham Road www.scotchpartners.com  
London EC1R 3AG

Copyright reserved. Not to be reproduced or distributed in any form without prior written permission.

Issue **Stage 4**

Date Nov 20 Scale @ A1 1:50  
Drawn By gpp Checked By SH  
Drawing No. 5150-SP-00-B1-DR-M-600 Rev