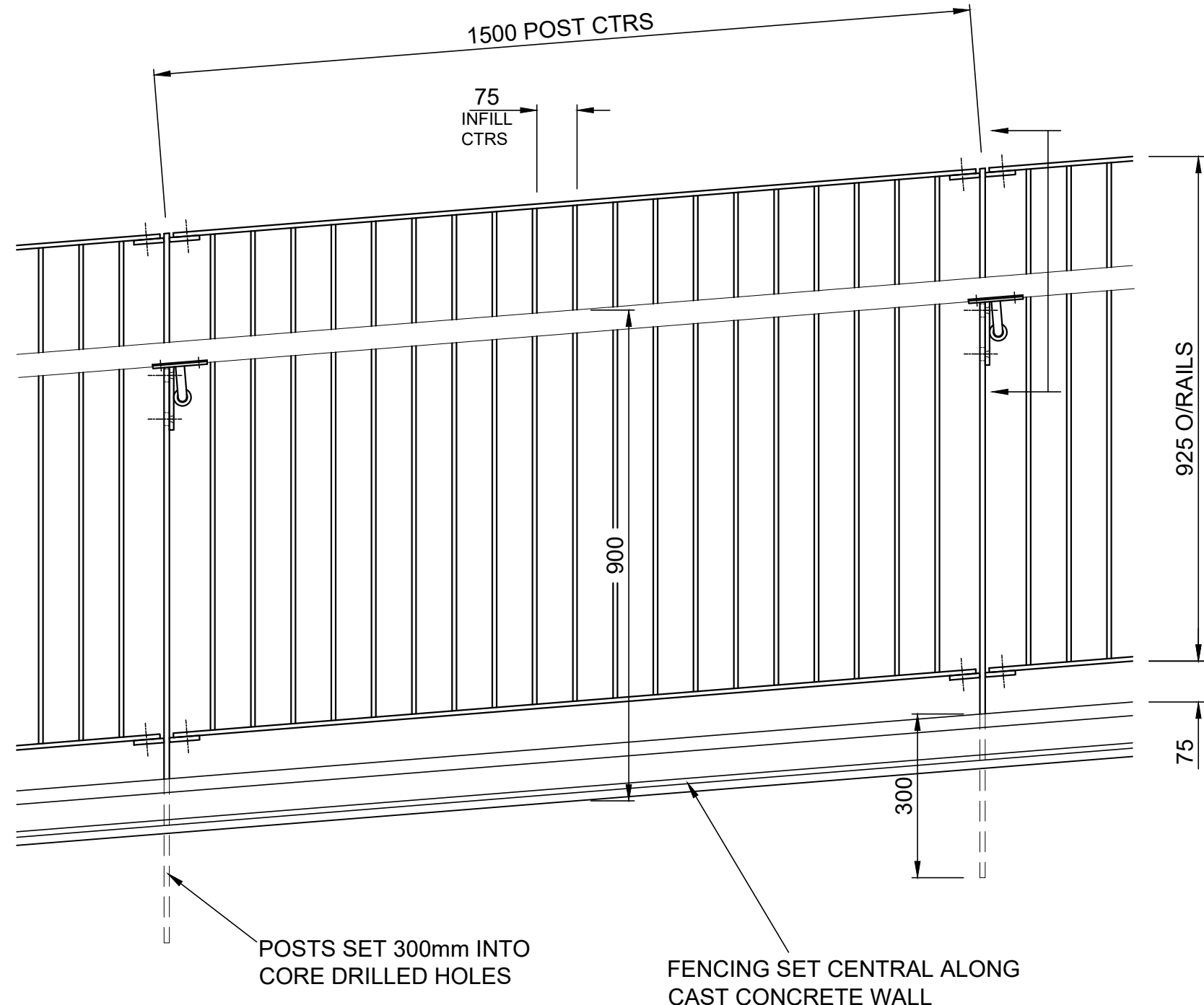
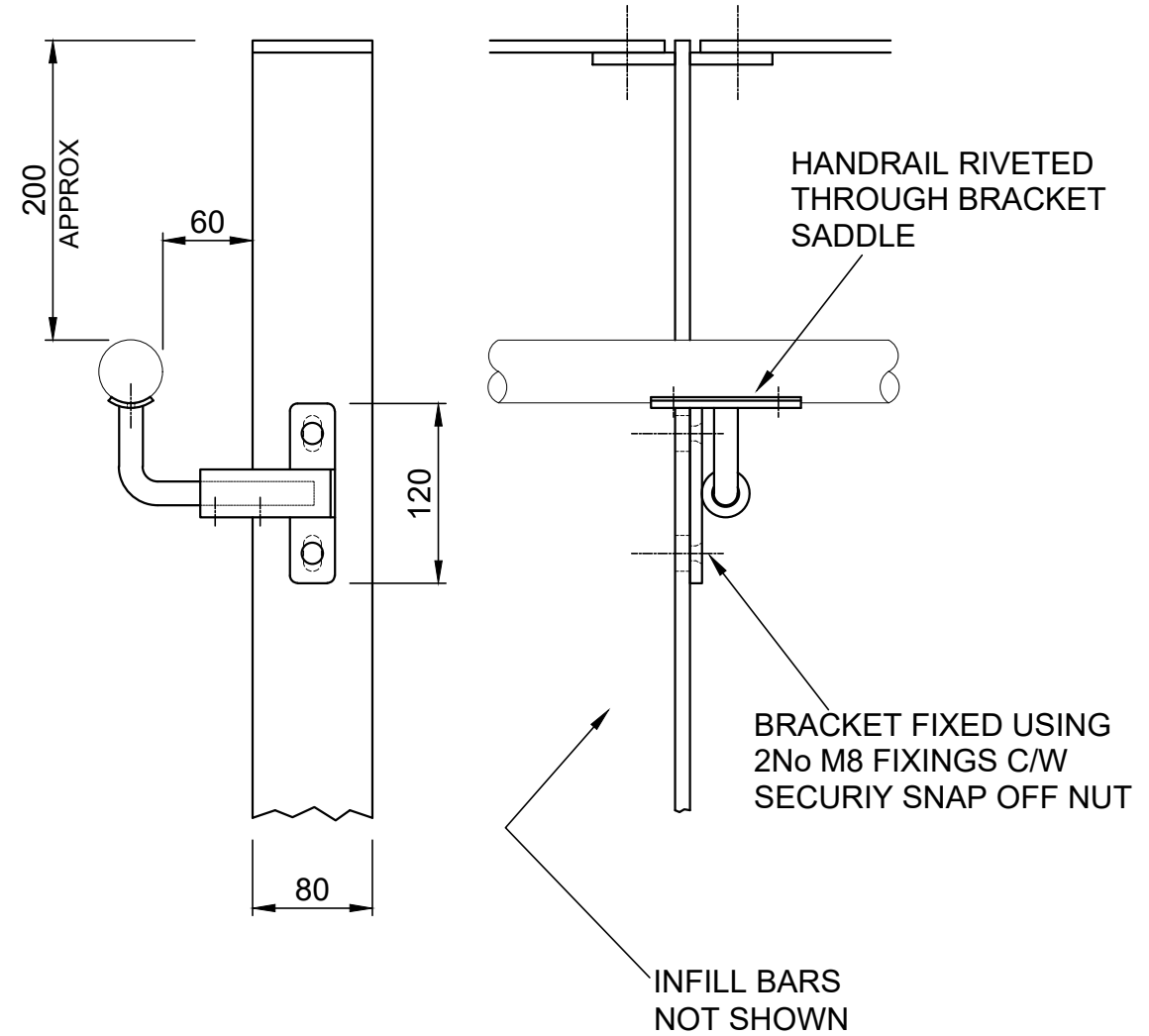


TYPICAL DETAIL - TYPE 1 C/W CANTILEVERED HANDRAIL



VIEW ON ARROWS



MATERIALS

- RAILS - 80x8 RSF
- INFILLS - 40x8 RSF
- POSTS - 80x10 RSF
- SUPPORT ARM - Ø16mm BAR
- FIXING PLATE - 40x8 RSF
- HANDRAIL - Ø42.4x3 CHS

FINISH

GALVANISED AND POLYESTER POWDER COATED RAL9005 BLACK

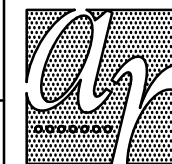
POSTS SET 300mm INTO CORE DRILLED HOLES

FENCING SET CENTRAL ALONG CAST CONCRETE WALL

A VARIOUS MINOR REVISIONS 16.02 RS

REV	DESCRIPTION	DATE	INIT
	TITLE	TYPE 1 BALUSTRADE C/W HANDRAIL - TYPICAL DETAIL	
	PROJECT	ID VERDE ST PANCRAS GARDENS	
	DRAWING No	1963/RS/005	REV
			A
REL	W/O	DRAWN	CHECK 1
-	SO1963	RS	RS
	CHECK 2	DATE	SCALE AT A3
		FEB21	1:10

QUANTITY	N/A
MARK	-
This drawing and its contents is the property of Alpha Rail Limited and may not be reproduced or published in anyway without the permission of Alpha Rail Limited.	



ALPHA RAIL LTD
Nunn Brook Rise
Huthwaite
Sutton-in-Ashfield
Nottinghamshire
NG17 2PD
01623 750214

technical.dept@alpharail.co.uk