



Peter
Tulip Landscapes

18/02/2021



Re: 21 Provost Road, NW3 4ST

Dear Peter

Further to my recent visit I now have the pleasure of submitting our quotation for required tree works as follows:

Quote

Large twin stem Sycamore situated beside the front boundary wall

The tree has become infected with cryptostomus corticola (Sooty Bark Disease).

The tree needs to be felled due to the condition and the location.

Reasons for recommended works

As detailed above

Yours sincerely

Michael Boys
Director
Boward Tree Surgery Ltd.

VAT No. 718 0487 29



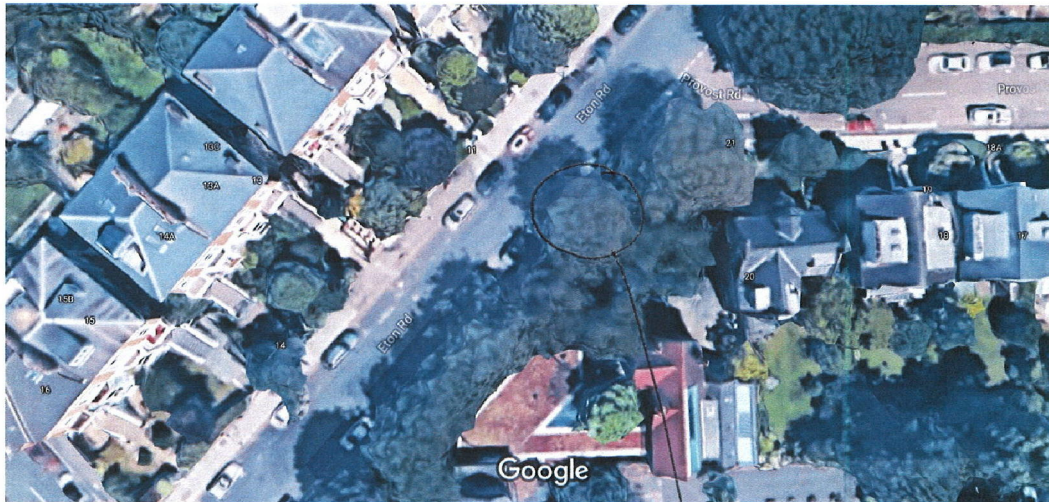
City &
Guilds
NPTC
Qualified

smas
worksafe
contractor
www.smasltd.com

on registered by
SSIP
SAFETY
SCHEDULE 10
PERFORMANCE

 **TRUSTMARK**
Government Endorsed Quality

NW3 4ST



Imagery ©2021 Google, Imagery ©2021 Bluesky, CNES / Airbus, Getmapping plc, Infoterra Ltd & Bluesky, Maxar Technologies, The 10 m
GeoInformation Group, Map data ©2021

Two stem
Sycamore tree.