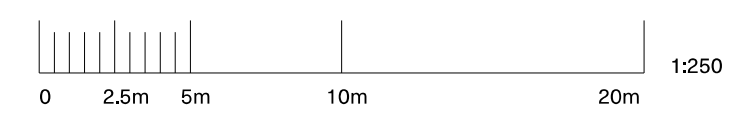
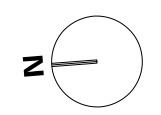


1 PROPOSED GROUND FLOOR  
 SCALE 1:500@A3

- OUTSTANDING SURVEY AND CO-ORDINATION ITEMS:**
- Existing levels around the building to be surveyed, in order to determine level access requirements & provision.
  - Bicycle parking numbers in abundance. Additional parking spaces are needed to achieve London Plan requirements.
  - Area below the South office building to be surveyed below ground floor level.
  - Dry riser positions, visibility and accessibility to be developed alongside WSP Fire.
  - Secondary means of escape from Ground Floor Mezzanine to be confirmed by MLM Building Control and WSP Fire.
  - Collision protection requirements to existing structure and new facades alongside existing roadways, to be confirmed by WSP Transport.
  - Planting alongside Kentish Town Road to be developed alongside further survey of lightwells to the basement car park.
  - All existing structure to be co-ordinated with WSP Structures' structural survey of existing condition.
  - All MEP Plant shown indicatively; refer to WSP MEP Information.
  - Landscape plan shown indicatively; refer to Landscape Designer's information.



rev.	date	description	status
D2	19.01.21	Co-ordination	STAGE 2
D1	30.11.20	Information	PRELIMINARY

**6a architects**

Rapier House, 40 Lamb Conduit St, London WC1N 3LJ  
 +44(0)20 7242 5422 www.6a.co.uk post@6a.co.uk

Do not scale from drawings. All dimensions to be checked on site. Errors to be reported immediately to the architect. Please read in conjunction with all relevant architect's, services, and structural engineers' drawings and specifications.

©6a architects

**Grand Union House**

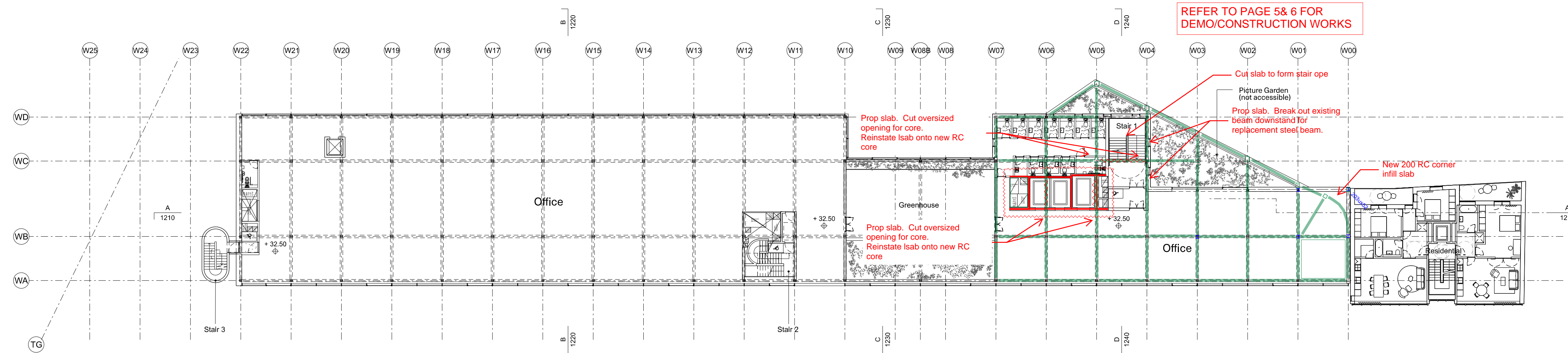
job	discipline	drawing	stage	revision
531	A	1100	2	D2

**Proposed Ground Floor Plan**

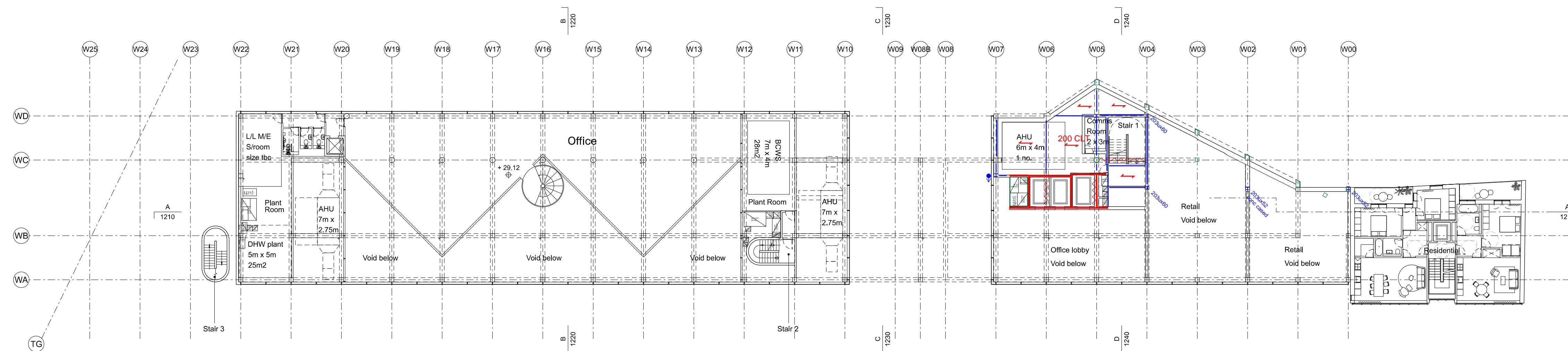
scale	date	status	drawn	checked
1:250	[A1] 19.01.21	STAGE 2	AB	MK



**wsp**  
**DDN S-010 Rev A**  
**Office Southern End**



2 PROPOSED FIRST FLOOR  
 SCALE 1:500@A3



1 PROPOSED MEZZANINE FLOOR  
 SCALE 1:500@A3

rev.	date	description	status
D2	19.01.21	Co-ordination	STAGE 2
D1	30.11.20	Information	PRELIMINARY

6a architects

Rapier House, 40 Lamb Conduit St, London WC1N 3LJ  
 +44(0)20 7242 5422 www.6a.co.uk post@6a.co.uk  
 Do not scale from drawings. All dimensions to be checked on site. Errors to be reported immediately to the architect. Please read in conjunction with all relevant architect's, services, and structural engineers' drawings and specifications.  
 ©6a architects

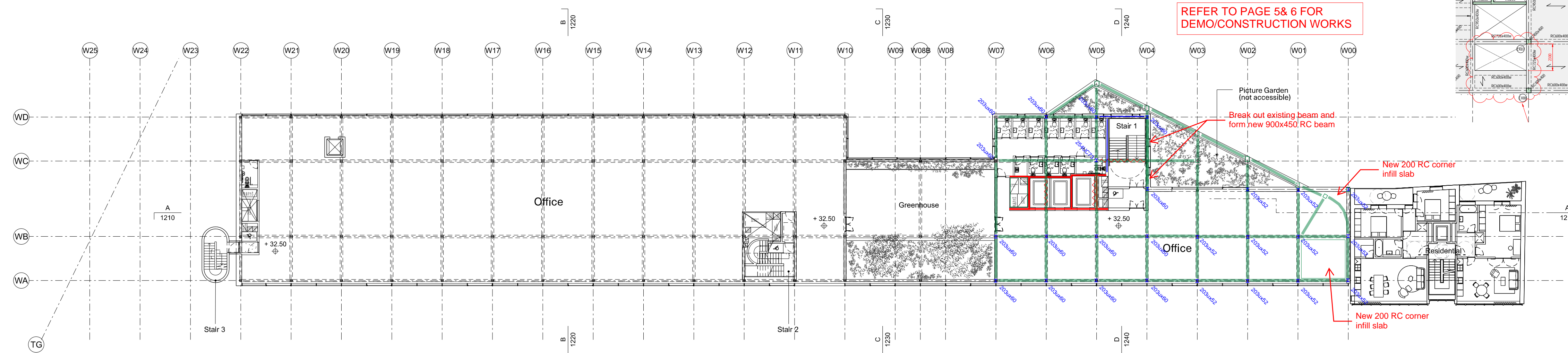
**Grand Union House**

job	discipline	drawing	stage	revision
531	A	1101	2	D2

**Proposed Mezzanine & Ground Plans**

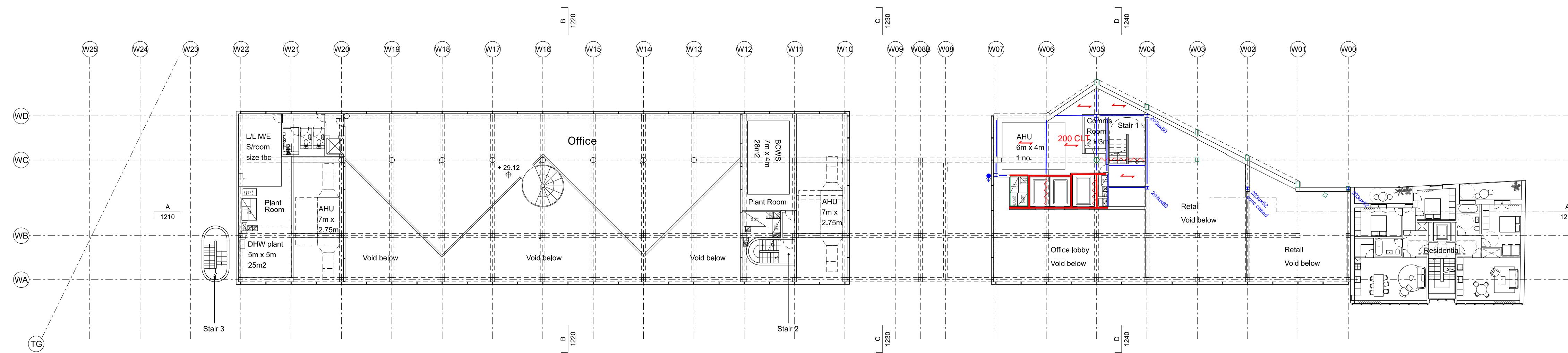
scale	date	status	drawn	checked
1:250	[A1] 19.01.21	STAGE 2	AB	MK

**wsp**  
**DDN S-010 Rev A**  
**Office Southern End**



REFER TO PAGE 5& 6 FOR DEMO/CONSTRUCTION WORKS

2 PROPOSED FIRST FLOOR  
 SCALE 1:500@A3



1 PROPOSED MEZZANINE FLOOR  
 SCALE 1:500@A3

rev.	date	description	status
D2	19.01.21	Co-ordination	STAGE 2
D1	30.11.20	Information	PRELIMINARY

6a architects

Rapier House, 40 Lamb Conduit St, London WC1N 3LJ  
 +44(0)20 7242 5422 www.6a.co.uk post@6a.co.uk  
 Do not scale from drawings. All dimensions to be checked on site. Errors to be reported immediately to the architect. Please read in conjunction with all relevant architect's, services, and structural engineers' drawings and specifications.  
 ©6a architects

**Grand Union House**

job	discipline	drawing	stage	revision
531	A	1101	2	D2

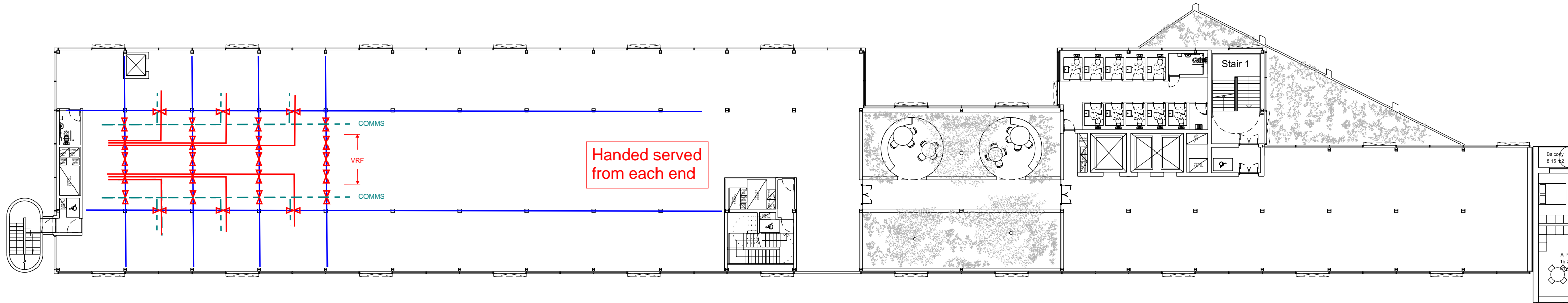
**Proposed Mezzanine & Ground Plans**

scale	date	status	drawn	checked
1:250	[A1] 19.01.21	STAGE 2	AB	MK



DDN S-014 Rev A

Office Floor beam opes for services distribution



OFFICE NIA 12,788 sq ft

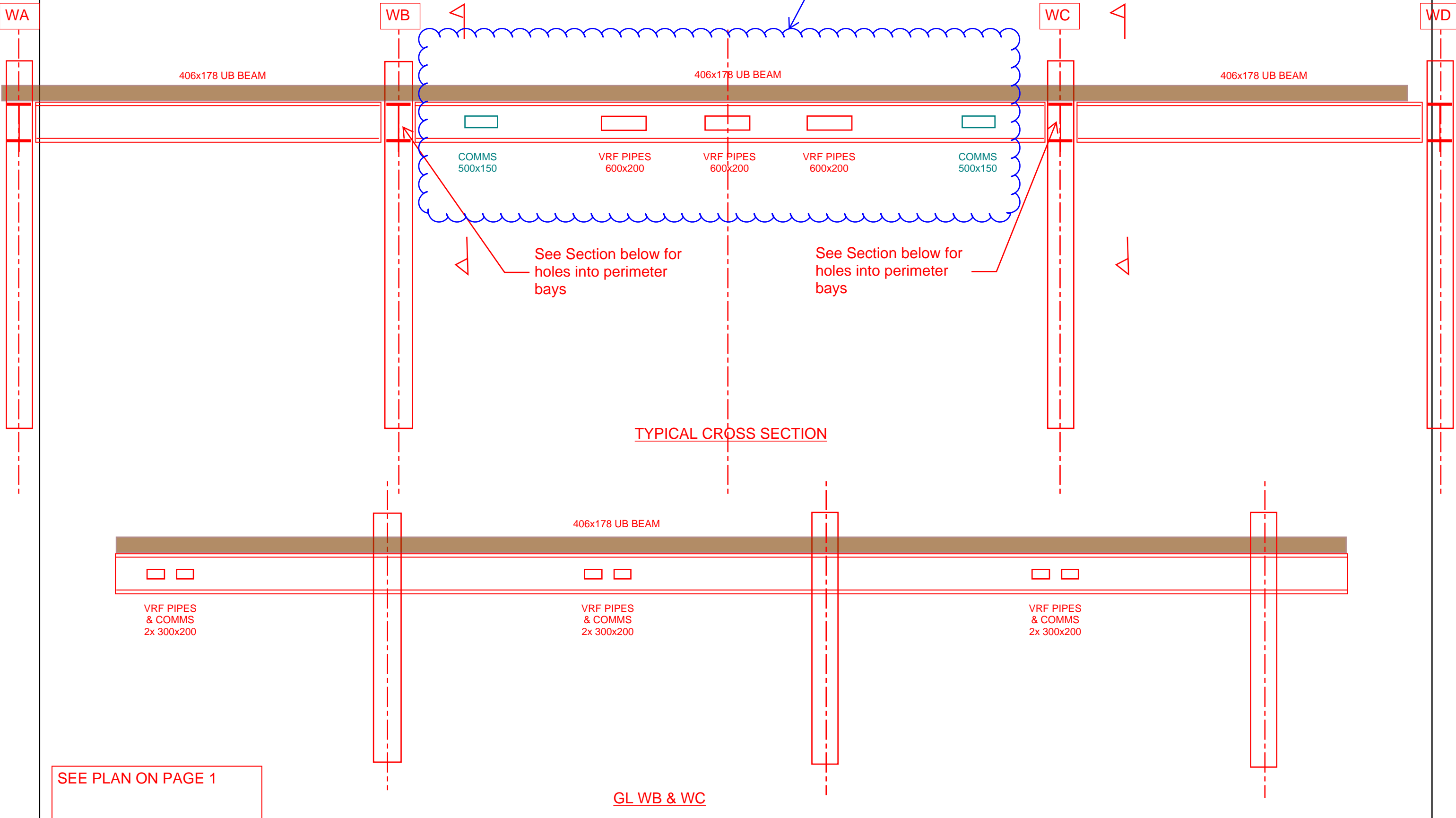
*First Floor*



Project. **Grand Union House**  
Title. **DDN S-014 Office Beams Services Route & BW Holes**

Made by. MC	Job No.	Date. Dec 20
Checked by.	Revision. A	Page No.
Sketch No. DDN S-014		

REFER PAGE 3



406x178 UB BEAM

406x178 UB BEAM

406x178 UB BEAM

COMMS  
500x150

VRF PIPES  
600x200

VRF PIPES  
600x200

VRF PIPES  
600x200

COMMS  
500x150

See Section below for  
holes into perimeter  
bays

See Section below for  
holes into perimeter  
bays

TYPICAL CROSS SECTION

406x178 UB BEAM

VRF PIPES  
& COMMS  
2x 300x200

VRF PIPES  
& COMMS  
2x 300x200

VRF PIPES  
& COMMS  
2x 300x200

SEE PLAN ON PAGE 1

GL WB & WC



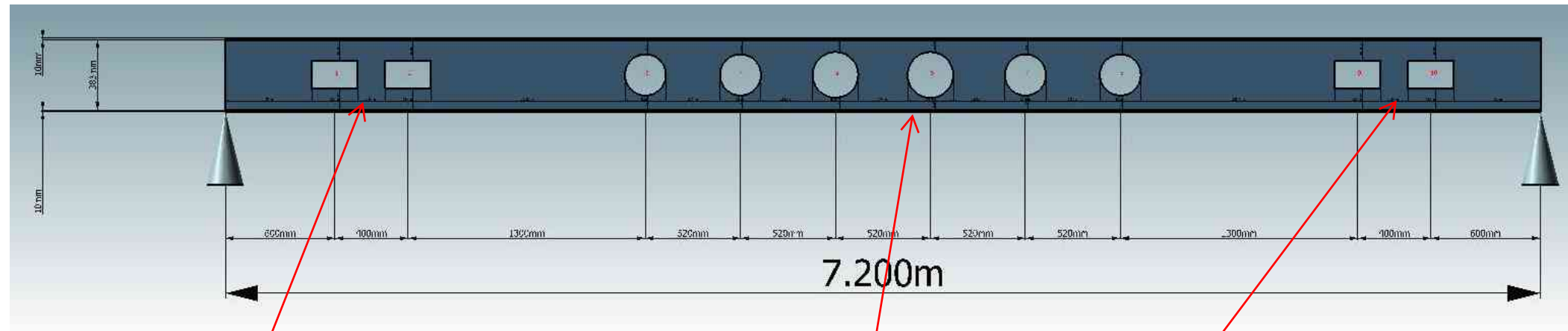


Project: Grand Union House  
Title: DDN S-014 - Office MEP Beam Openings

Made by: AT  
Checked by:

Job No. 70009120  
Revision: A  
Sketch No. DDN S-014  
Date: 06/01/2021  
Page No. 01

### OPTION 1 - UB406x178x54 - MORE COST EFFICIENT

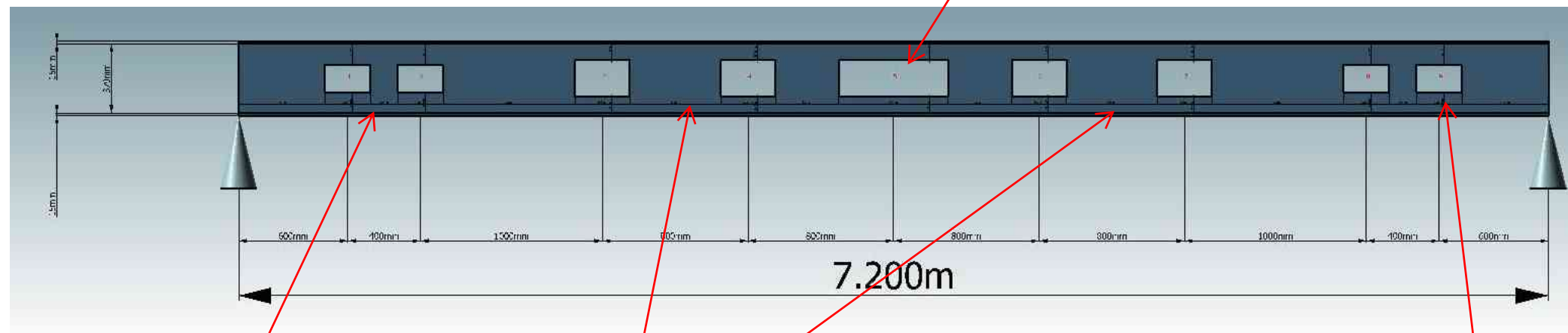


2no 150x250 wide openings

6no 225dia openings

2no 150x250 wide openings

### OPTION 2 - UB406x178x67



2no 150x250 wide openings

4no 200x300 wide openings

1no 200x600 wide opening

2no 150x250 wide openings



WSP House  
70 Chancery Lane  
London  
WC2A 1AF

[wsp.com](http://wsp.com)