



Proposed facade; a grid of slender framed glazing applied across the structure invokes the spirit of Grimshaw's original project.



Plant rooms and bike stores are also visible from the street, animating the facade, and asserting its working and environmental character



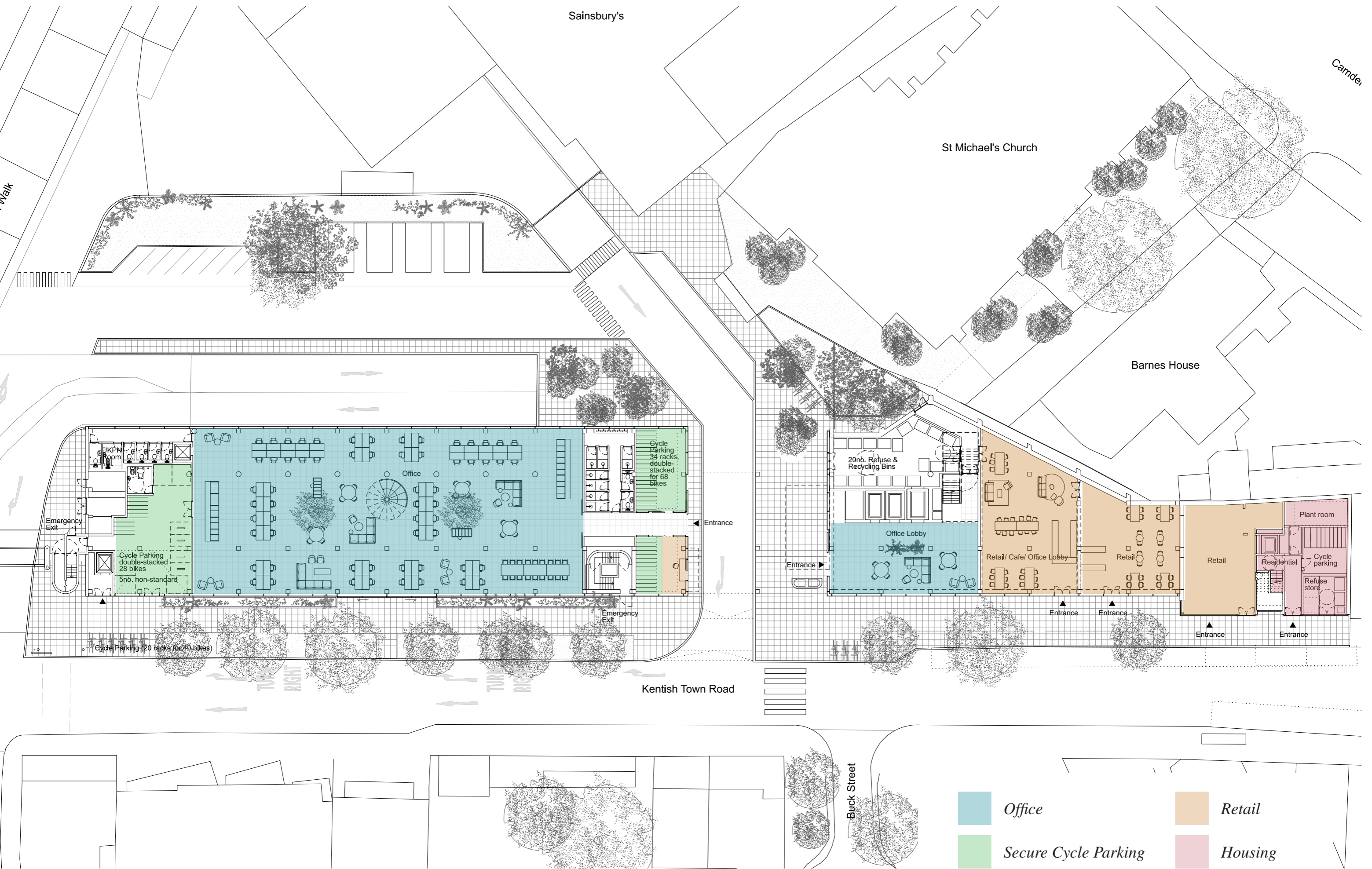
*Proposed west elevation viewed from Kentish Town Road,
with trees planted along a widened pavement*

AN INTEGRATED APPROACH TO CREATE A HEALTHY, GREEN AND BIODIVERSE ENVIRONMENT



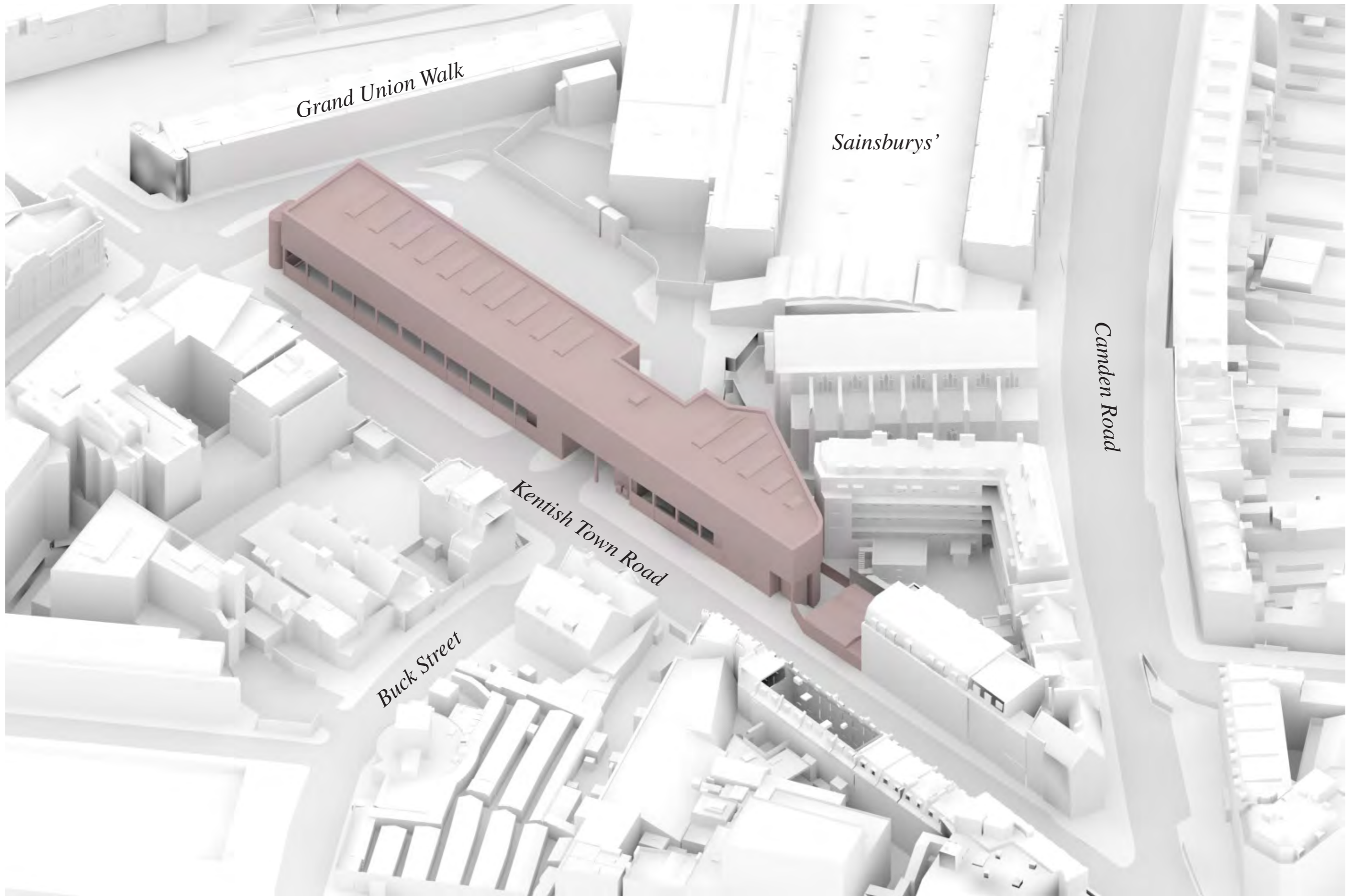


View From Buck Street towards the Greenhouse

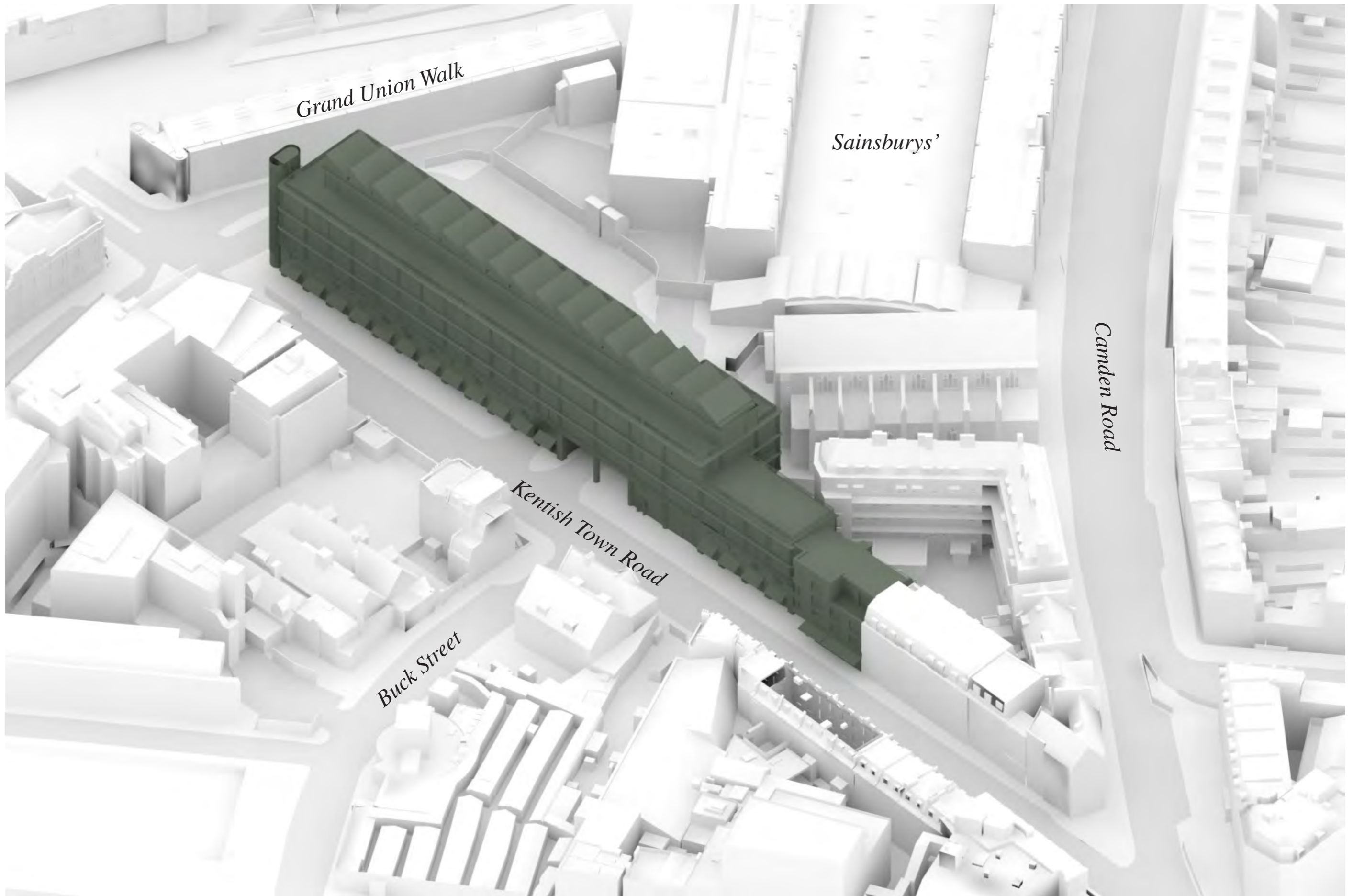


Proposed Ground Floor

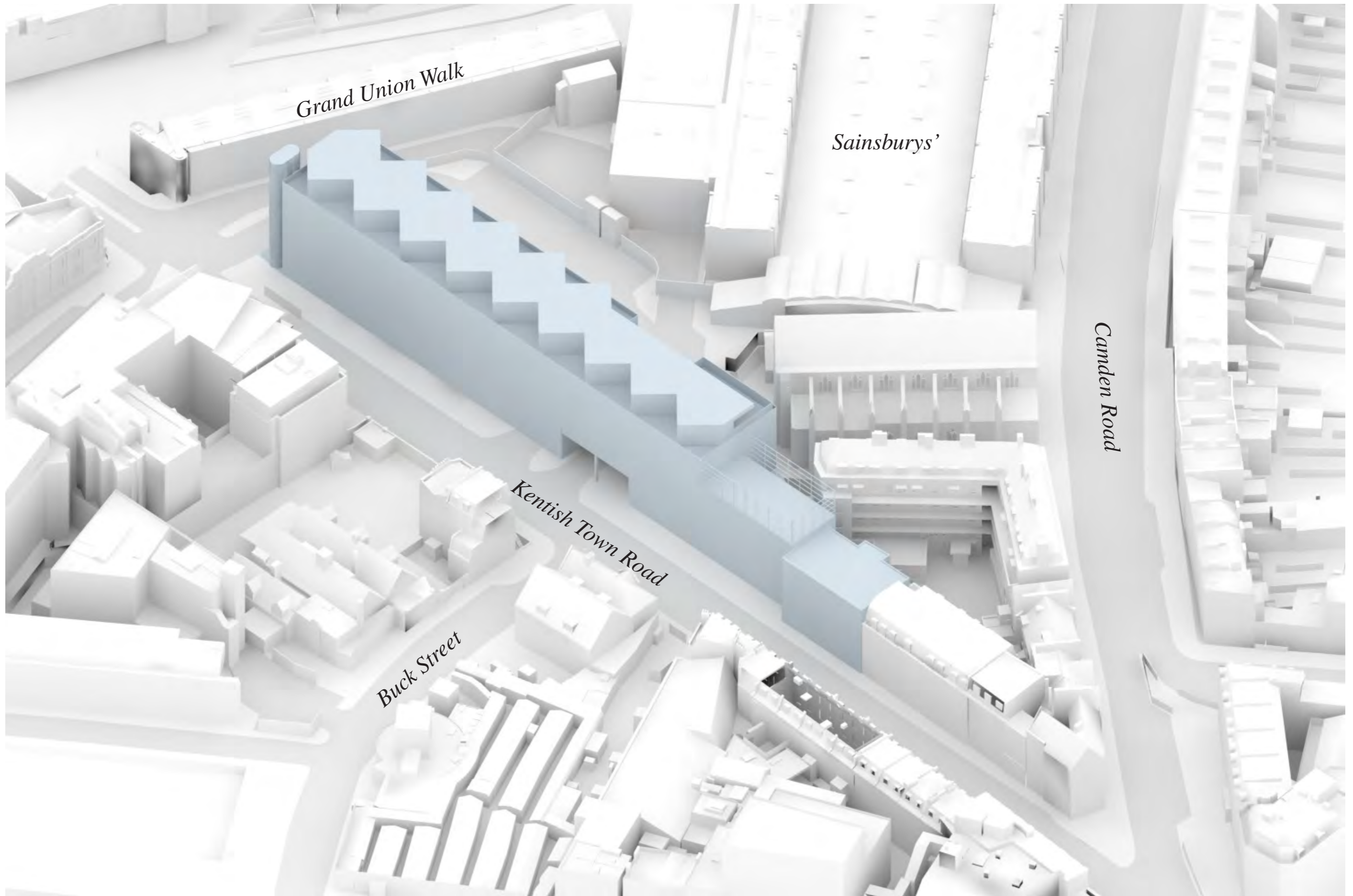
Building Size



Existing Massing: View from South-West



AP 2018 Massing: View from South-West



*Proposed Massing: View from South-East
The proposal is approx 2.25m lower than the 2018 Scheme*

Facade & Materials



Proposed west elevation viewed from Kentish Town Road



Top Hung Windows
Bruther
New Generation Research Centre, Caen



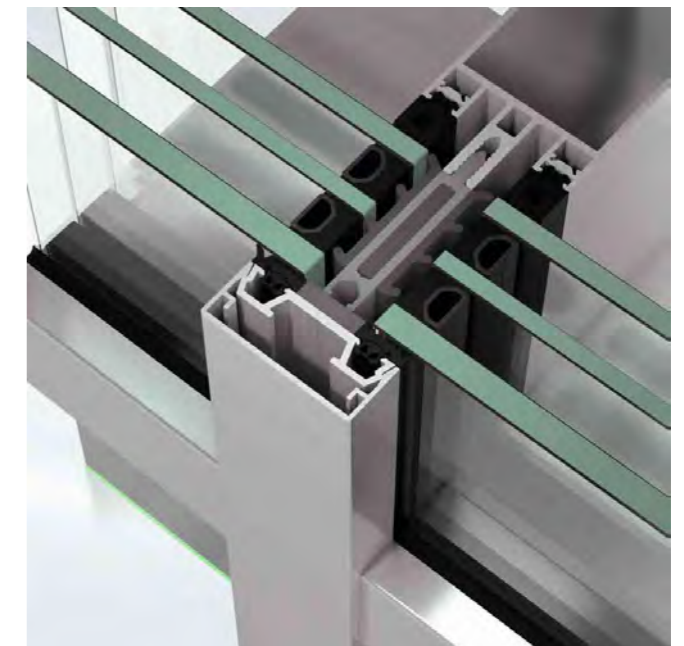
Sliding Doors
Lacaton & Vassal
Ecole d'Architecture, Nantes



*A checkerboard of large sliding doors
create generous openings to the street*



Manually operated windows connect the street and interior



Proposed material & colour palette

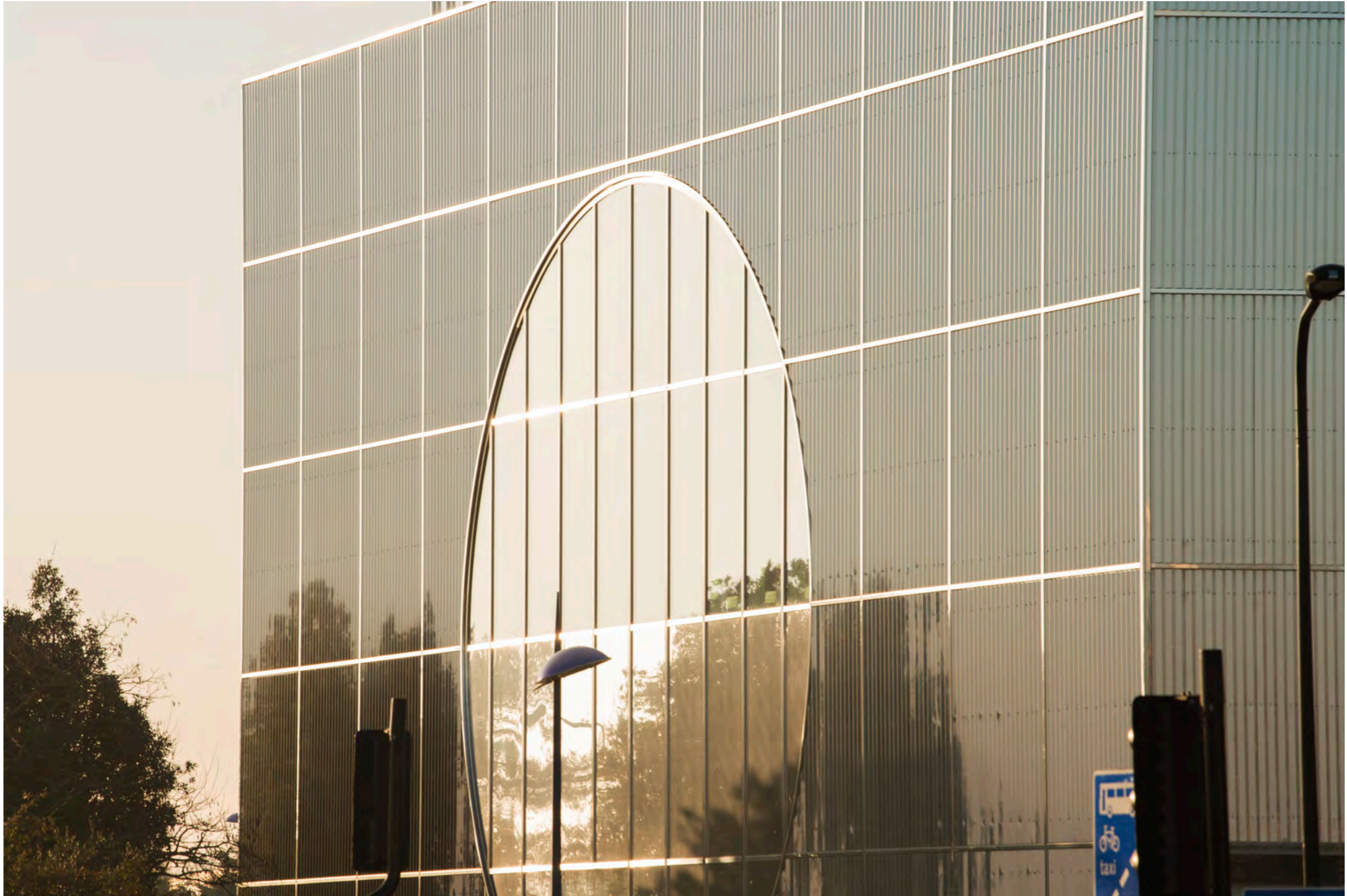


Top floor: Alternating facades of aluminium and glass



Reflective Facade of MK Gallery

Vegetation and sky reflected in the building facade



Reflective Facade of MK Gallery

...changing throughout the day from sunrise to sunset



Work in Progress View from North West

Affordable Homes



Located to the South of the site, the new residential building adopts the material language and composition of the other buildings across the Grimshaw campus



Park Road Apartments



Grand Union Walk



New Residential Facade

Grand Union House will...

- 1. Create new skilled jobs in Camden and boost the local economy*
- 2. Transform and soften the public realm and streetscape*
- 3. Provide high quality post-Covid office space*
- 4. Support cycling*
- 5. Improve biodiversity*
- 6. Be an important model for sustainable low carbon development*
- 7. Create 6 new affordable homes in central Camden*



END