

1 PROPOSED SECTION AA
SCALE 1:500 @ A3

| rev. | date | description | status |
|------|----------|---------------|---------|
| D1 | 19.01.21 | Co-ordination | STAGE 2 |
| P1 | 18.02.21 | Planning | STAGE 2 |

6a architects

Rapier House, 40 Lambeth Conduit St, London WC1N 3LJ
+44(0)20 7242 5422 www.6a.co.uk post@6a.co.uk

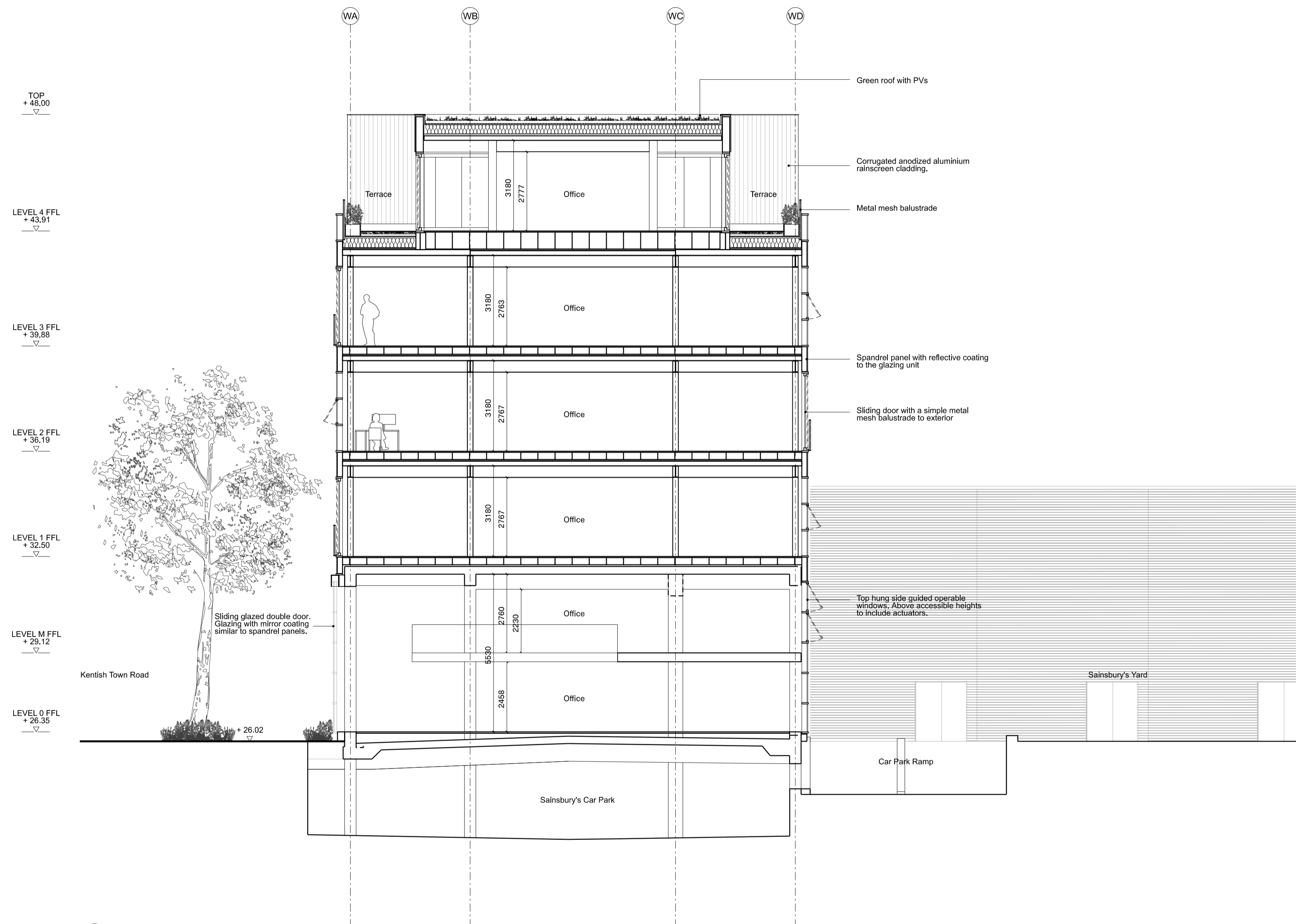
Do not scale from drawings. All dimensions to be checked on site. Errors to be reported immediately to the architect. Please read in conjunction with all relevant architect's, services, and structural engineers' drawings and specifications.
©6a architects

Grand Union House

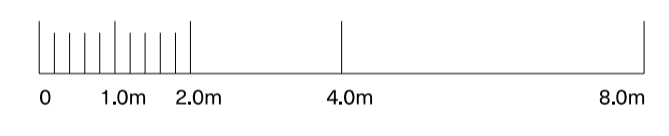
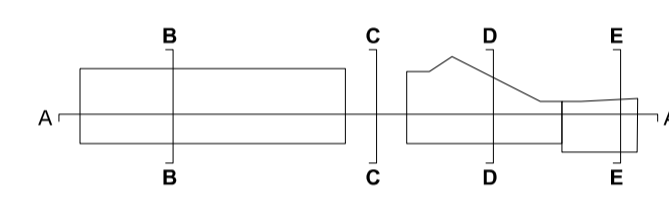
| job | discipline | drawing | stage | revision |
|-----|------------|---------|-------|----------|
| 531 | A | 1210 | 2 | P1 |

Proposed Section AA

| scale | date | status | drawn | checked |
|-------|---------------|---------|-------|---------|
| 1:250 | [A1] 18.02.21 | STAGE 2 | LH | MK |



1 PROPOSED SECTION BB
SCALE 1:200 @ A3



| rev. | date | description | status |
|------|----------|---------------|-------------|
| D1 | 19.01.21 | Co-ordination | INFORMATION |
| P1 | 18.02.21 | Planning | STAGE 2 |

6a architects

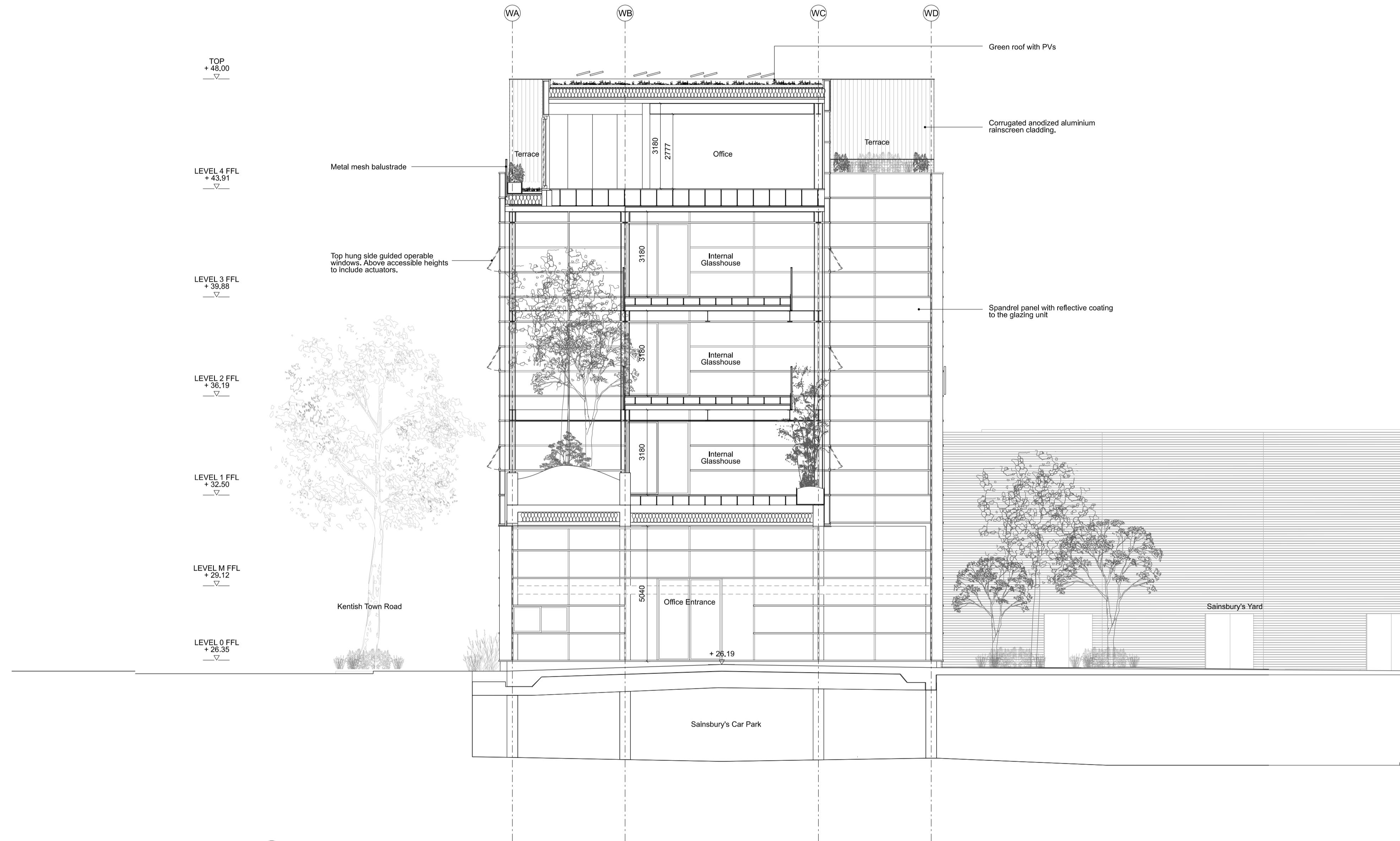
Rapier House, 40 Lamb Conduit St, London WC1N 3LJ
+44(0)20 7242 5422 www.6a.co.uk post@6a.co.uk
Do not scale from drawings. All dimensions to be checked on site. Errors to be reported immediately to the architect. Please read in conjunction with all relevant architect's, services, and structural engineers' drawings and specifications.
©6a architects

Grand Union House

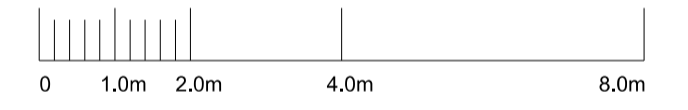
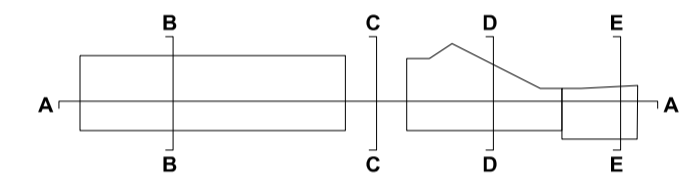
| job | discipline | drawing | stage | revision |
|-----|------------|---------|-------|----------|
| 531 | A | 1220 | 2 | P1 |

Proposed Section BB

| scale | date | status | drawn | checked |
|------------|----------|---------|-------|---------|
| 1:100 [A1] | 18.02.21 | STAGE 2 | LH | MK |



1 PROPOSED SECTION CC
SCALE 1:200 @ A3



| rev. | date | description | status |
|------|----------|---------------|---------|
| D1 | 19.01.21 | Co-ordination | STAGE 2 |
| P1 | 18.02.21 | Planning | STAGE 2 |

6a architects

Repley House, 40 Lamb's Conduit St, London WC1N 3LJ
+44(0)20 7242 5422 www.6a.co.uk post@6a.co.uk

Do not scale from drawings. All dimensions to be checked on site. Errors to be reported immediately to the architect. Please read in conjunction with all relevant architect's, services, and structural engineers' drawings and specifications.

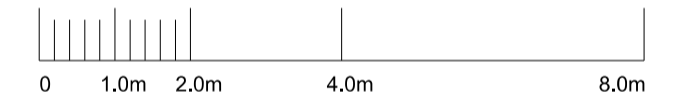
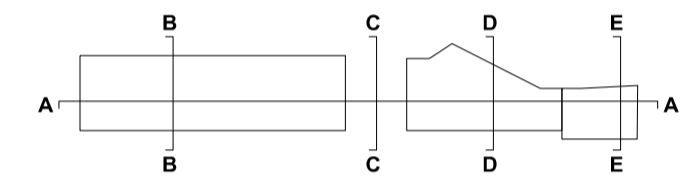
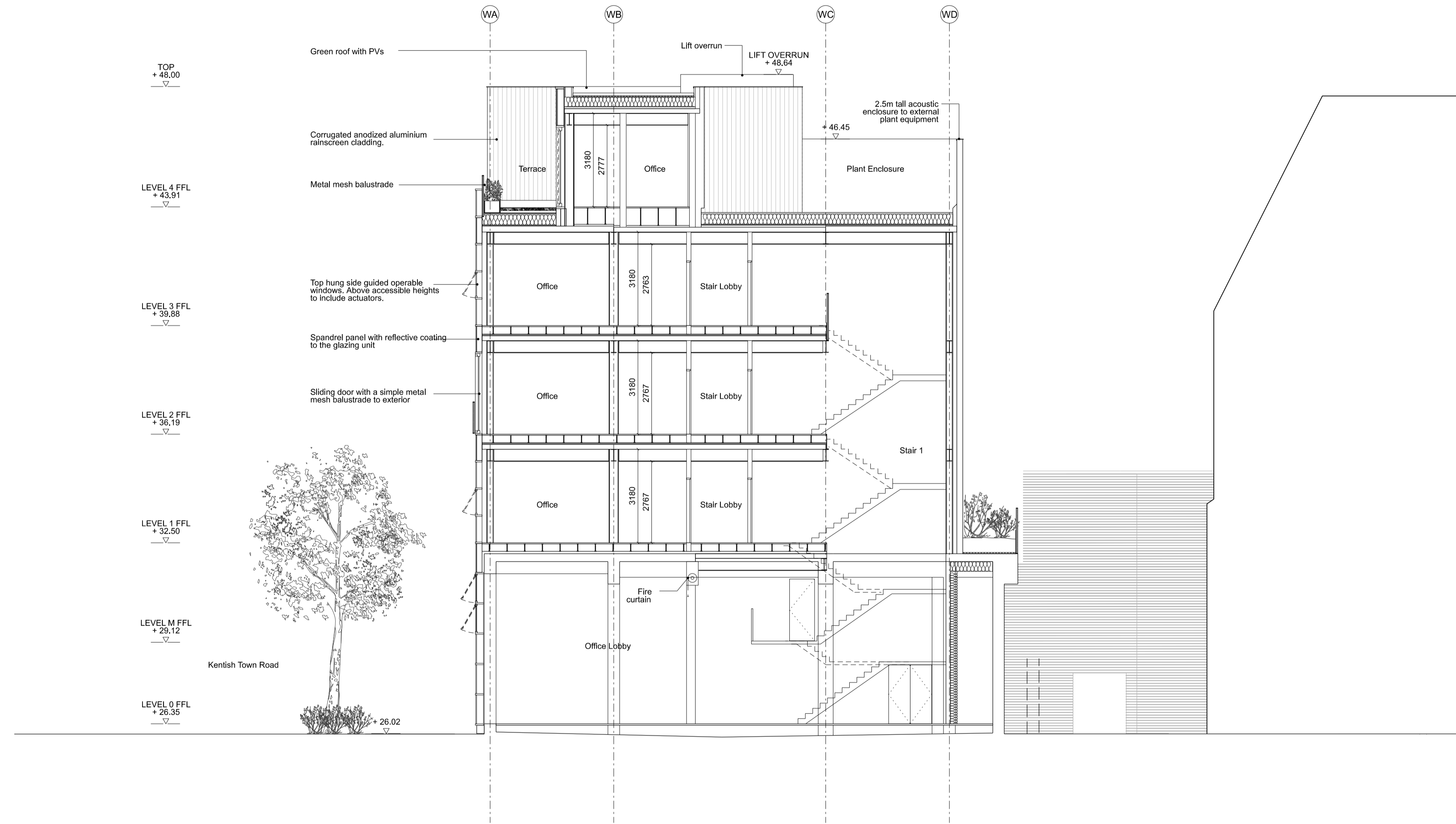
©6a architects

Grand Union House

| job | discipline | drawing | stage | revision |
|-----|------------|---------|-------|----------|
| 531 | A | 1230 | 2 | P1 |

Proposed Section CC

| scale | date | status | drawn | checked |
|-------|---------------|---------|-------|---------|
| 1:100 | [A1] 18.02.21 | STAGE 2 | LH | MK |



1 PROPOSED SECTION DD
1240 SCALE 1:200 @ A3

| rev. | date | description | status |
|------|----------|---------------|---------|
| D1 | 19.01.21 | Co-ordination | STAGE 2 |
| P1 | 18.02.21 | Planning | STAGE 2 |

6a architects

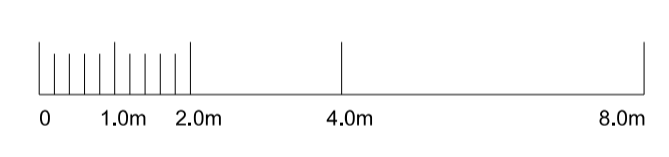
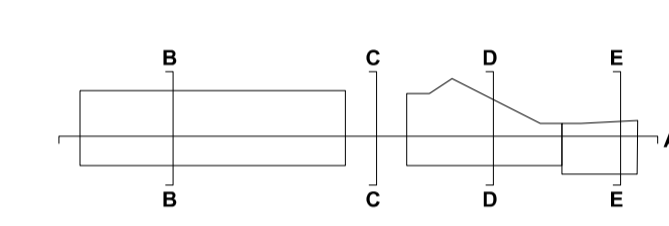
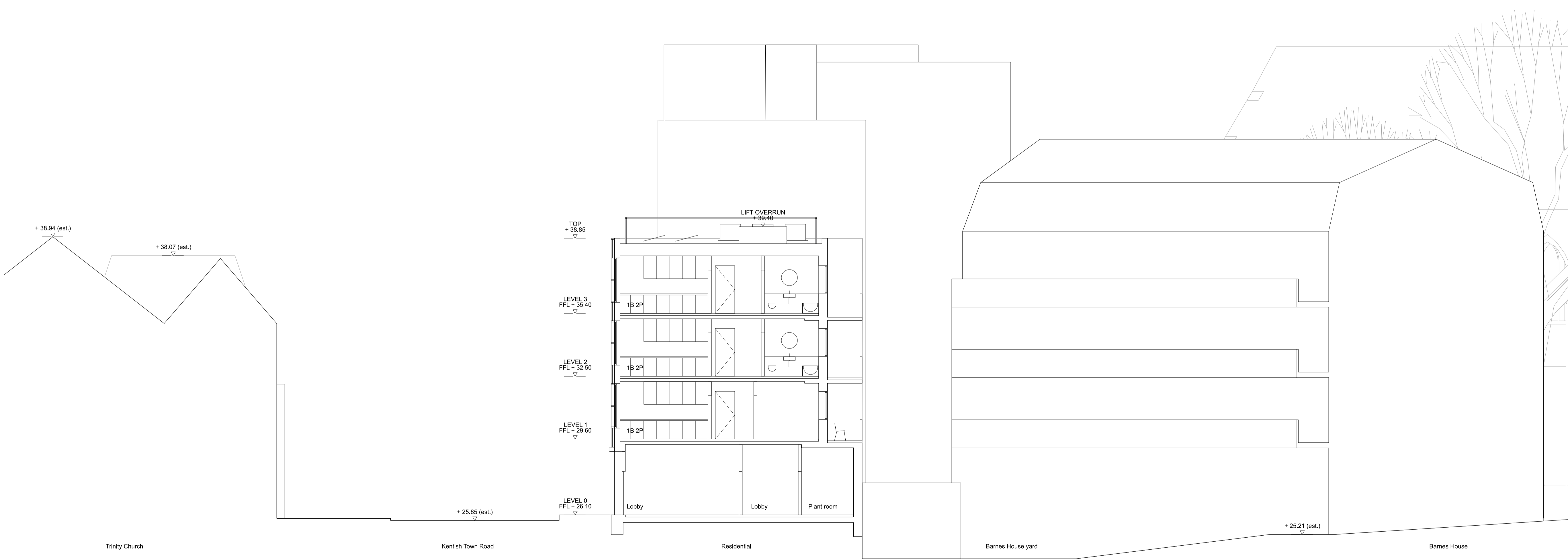
Rapier House, 40 Lamb's Conduit St, London WC1N 3LJ
+44(0)20 7242 5422 www.6a.co.uk post@6a.co.uk
Do not scale from drawings. All dimensions to be checked on site. Errors to be reported immediately to the architect. Please read in conjunction with all relevant architect's, services, and structural engineers' drawings and specifications.
©6a architects

Grand Union House

| job | discipline | drawing | stage | revision |
|-----|------------|---------|-------|----------|
| 531 | A | 1240 | 2 | P1 |

Proposed Section DD

| scale | date | status | drawn | checked |
|------------|----------|---------|-------|---------|
| 1:100 [A1] | 18.02.21 | STAGE 2 | LH | MK |



| rev. | date | description | status |
|------|----------|-------------|---------|
| P1 | 18.02.21 | Planning | STAGE 2 |

6a architects

Rapier House, 40 Lamb's Conduit St, London WC1N 3LJ
 +44(0)20 7242 5422 www.6a.co.uk post@6a.co.uk
 Do not scale from drawings. All dimensions to be checked on site. Errors to be reported immediately to the architect. Please read in conjunction with all relevant architect's, services, and structural engineers' drawings and specifications.
 ©6a architects

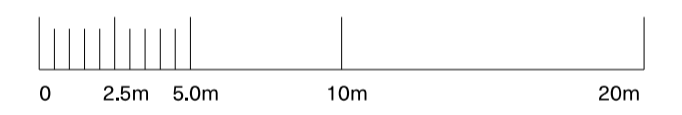
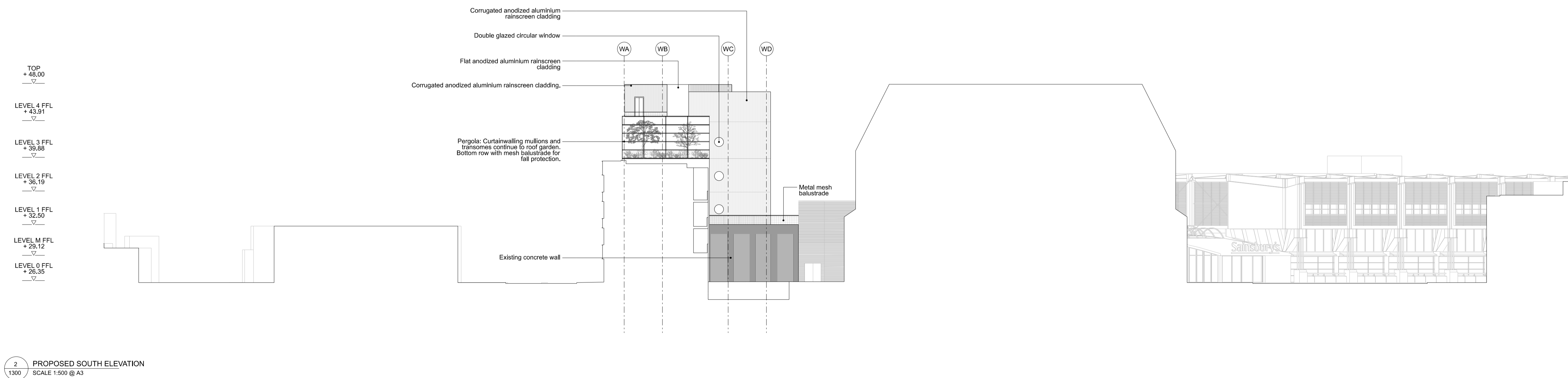
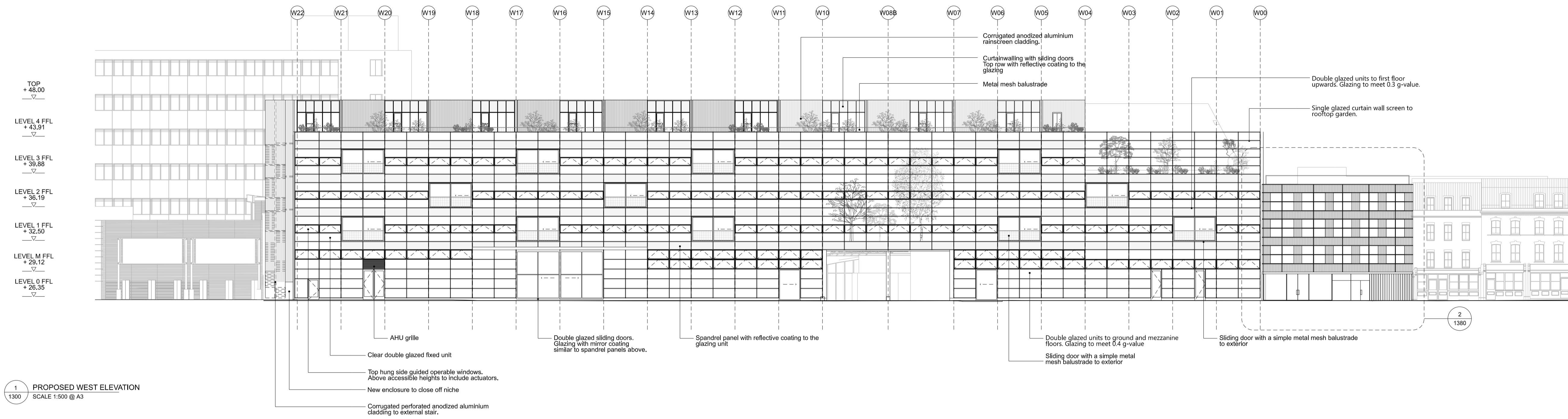
1 PROPOSED SECTION EE
 1270 SCALE 1:200 @ A3

Grand Union House

| job | discipline | drawing | stage | revision |
|-----|------------|---------|-------|----------|
| 531 | A | 1270 | 2 | P1 |

Proposed Residential Sections

| scale | date | status | drawn | checked |
|-------|---------------|---------|-------|---------|
| 1:100 | [A1] 18.02.21 | STAGE 2 | LH | MK |



| rev. | date | description | status |
|------|----------|---------------|---------|
| D1 | 18.01.21 | Co-ordination | STAGE 2 |
| D2 | 10.02.21 | Co-ordination | STAGE 2 |
| P1 | 18.02.21 | Planning | STAGE 2 |

6a architects

Rapier House, 40 Lamb Conduit St, London WC1N 3LJ
+44(0)20 7245 5422 www.6a.co.uk post@6a.co.uk

Do not scale from drawings. All dimensions to be checked on site. Errors to be reported immediately to the architect. Please read in conjunction with all relevant architect's, services, and structural engineers' drawings and specifications.

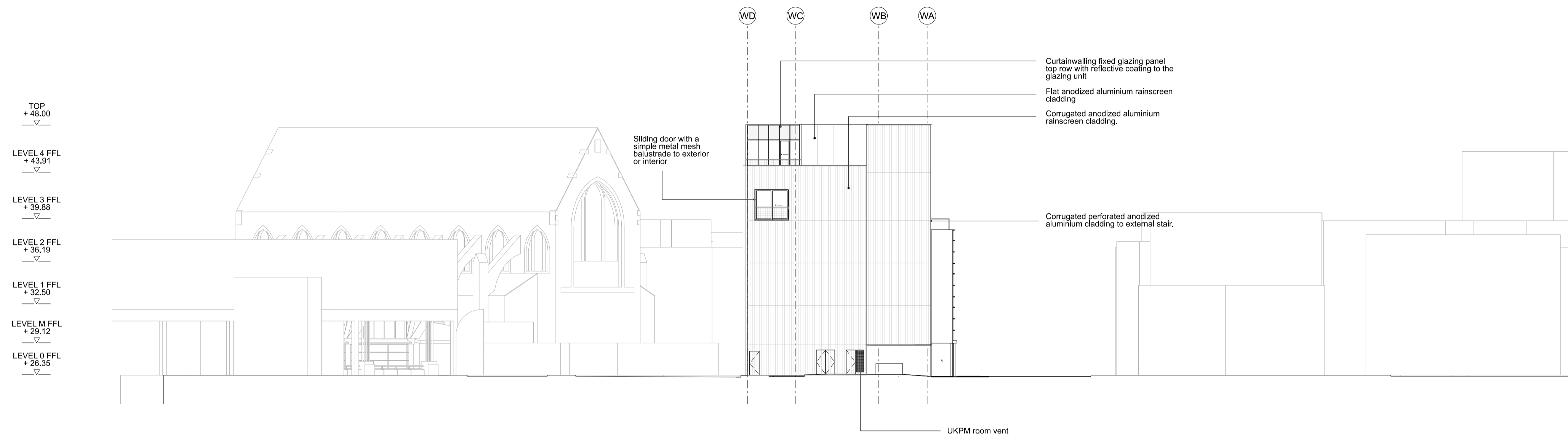
©6a architects

Grand Union House

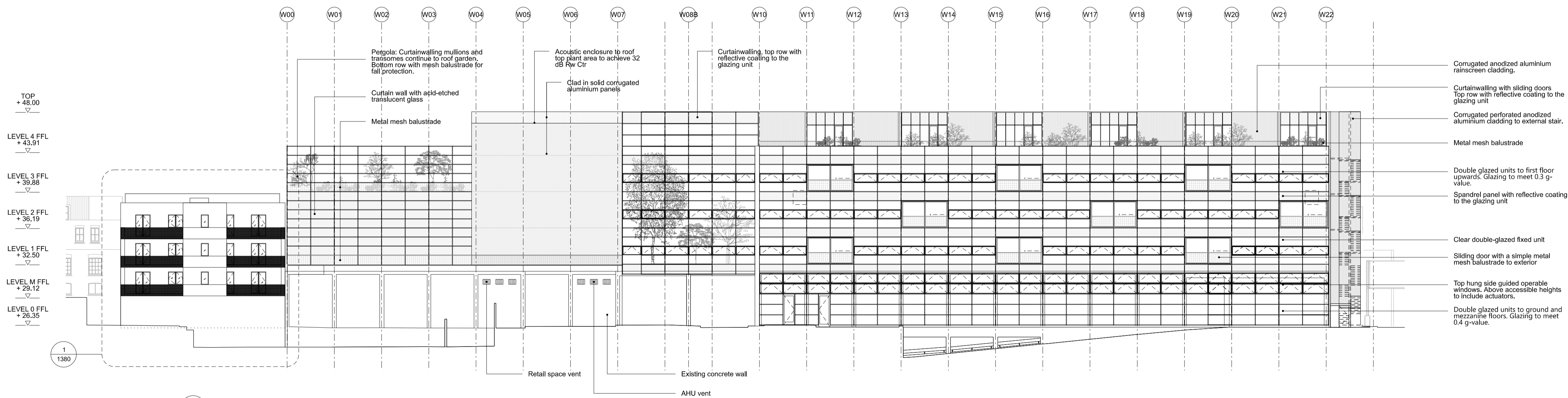
| job | discipline | drawing | stage | revision |
|-----|------------|---------|-------|----------|
| 531 | A | 1300 | 2 | P1 |

Proposed West & South Elevations

| scale | date | status | drawn | checked |
|------------|----------|---------|-------|---------|
| 1:250 [A1] | 18.02.21 | STAGE 2 | LH | MK |



1 PROPOSED NORTH ELEVATION
SCALE 1:500 @ A3



2 PROPOSED EAST ELEVATION
SCALE 1:500 @ A3

6a architects

Rapier House, 40 Lamb Conduit St, London WC1N 3LJ
+44(0)20 7242 5422 www.6a.co.uk post@6a.co.uk

Do not scale from drawings. All dimensions to be checked on site. Errors to be reported immediately to the architect. Please read in conjunction with all relevant architect's, services, and structural engineers' drawings and specifications.

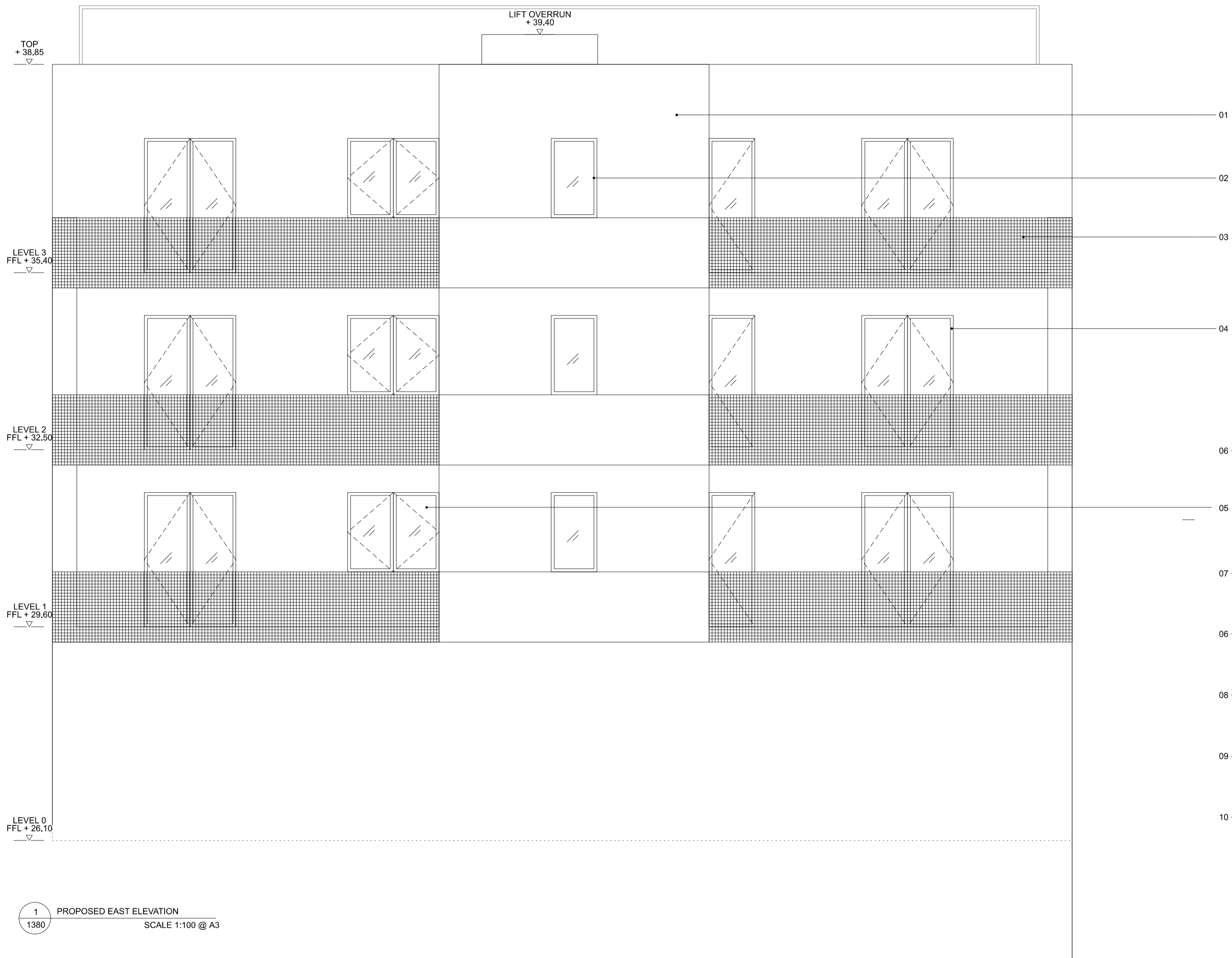
©6a architects

Grand Union House

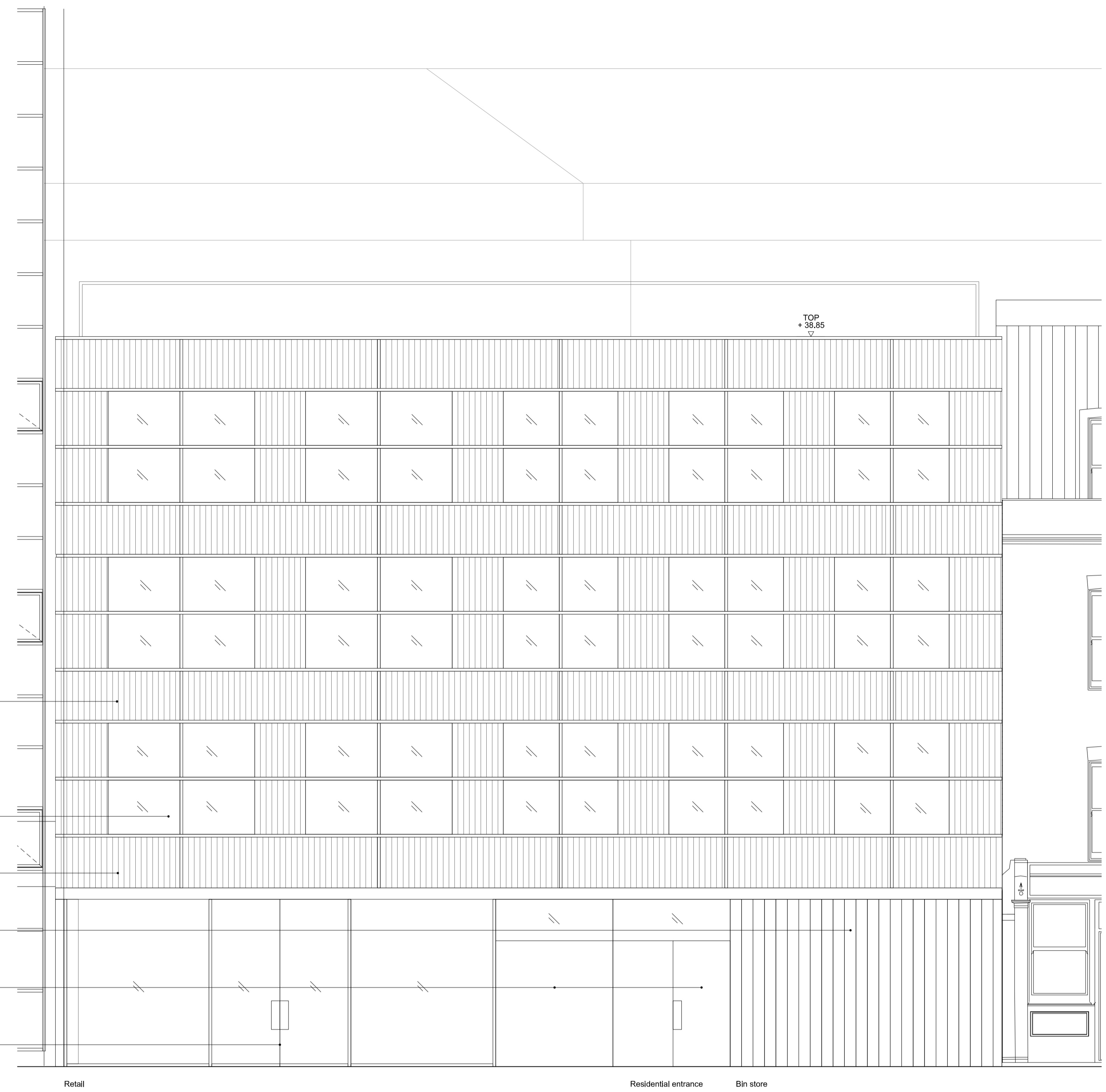
| job | discipline | drawing | stage | revision |
|-----|------------|---------|-------|----------|
| 531 | A | 1310 | 2 | P1 |

Proposed North & East Elevation

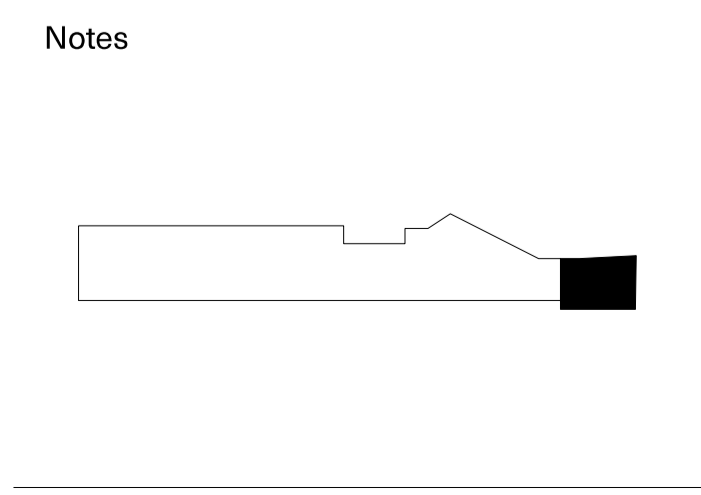
| scale | date | status | drawn | checked |
|------------|----------|---------|-------|---------|
| 1:250 [A1] | 18.02.21 | STAGE 2 | LH | MK |



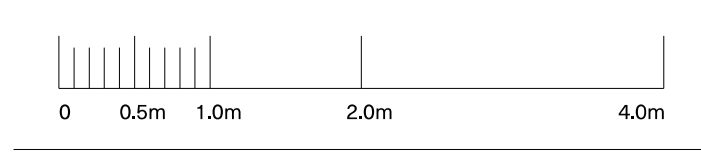
1 PROPOSED EAST ELEVATION
SCALE 1:100 @ A3



2 PROPOSED WEST ELEVATION
SCALE 1:100 @ A3



- 01. Render on all rear facade surfaces
- 02. Window with fixed glazing, powder coated metal frame
- 03. Powder coated metal mesh balustrade
- 04. Glass door with powder coated metal frame
- 05. Powder coated metal window frame
- 06. Corrugated anodised aluminium cladding, colour TBC
- 07. Windows with anodised aluminium frames
- 08. Folding sliding concertina doors, colour TBC
- 09. Metal cladding, colour TBC
- 10. Metal curtain walling to storefront



| rev. | date | description | status |
|------|----------|---------------|---------|
| D1 | 19.01.21 | Co-ordination | STAGE 2 |
| P1 | 18.02.21 | Planning | STAGE 2 |

6a architects

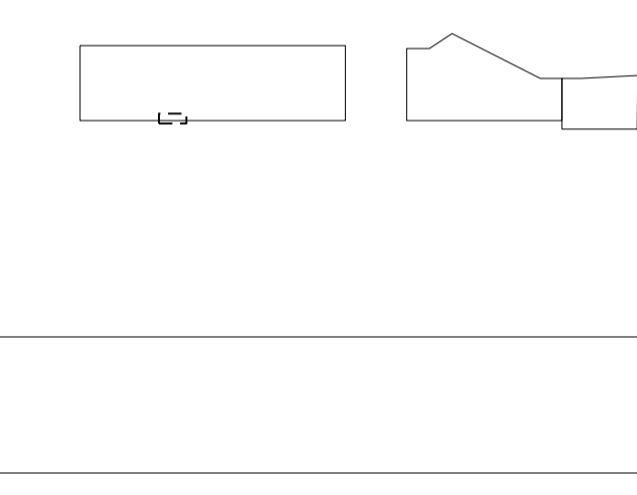
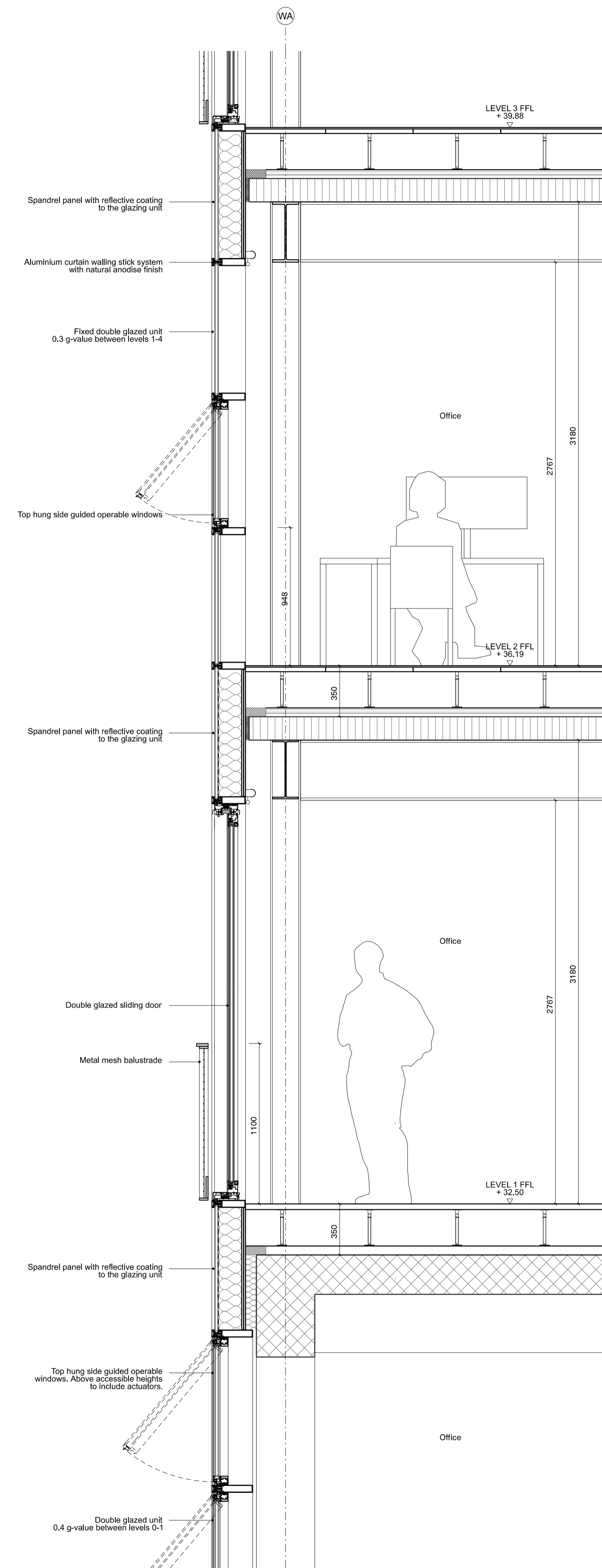
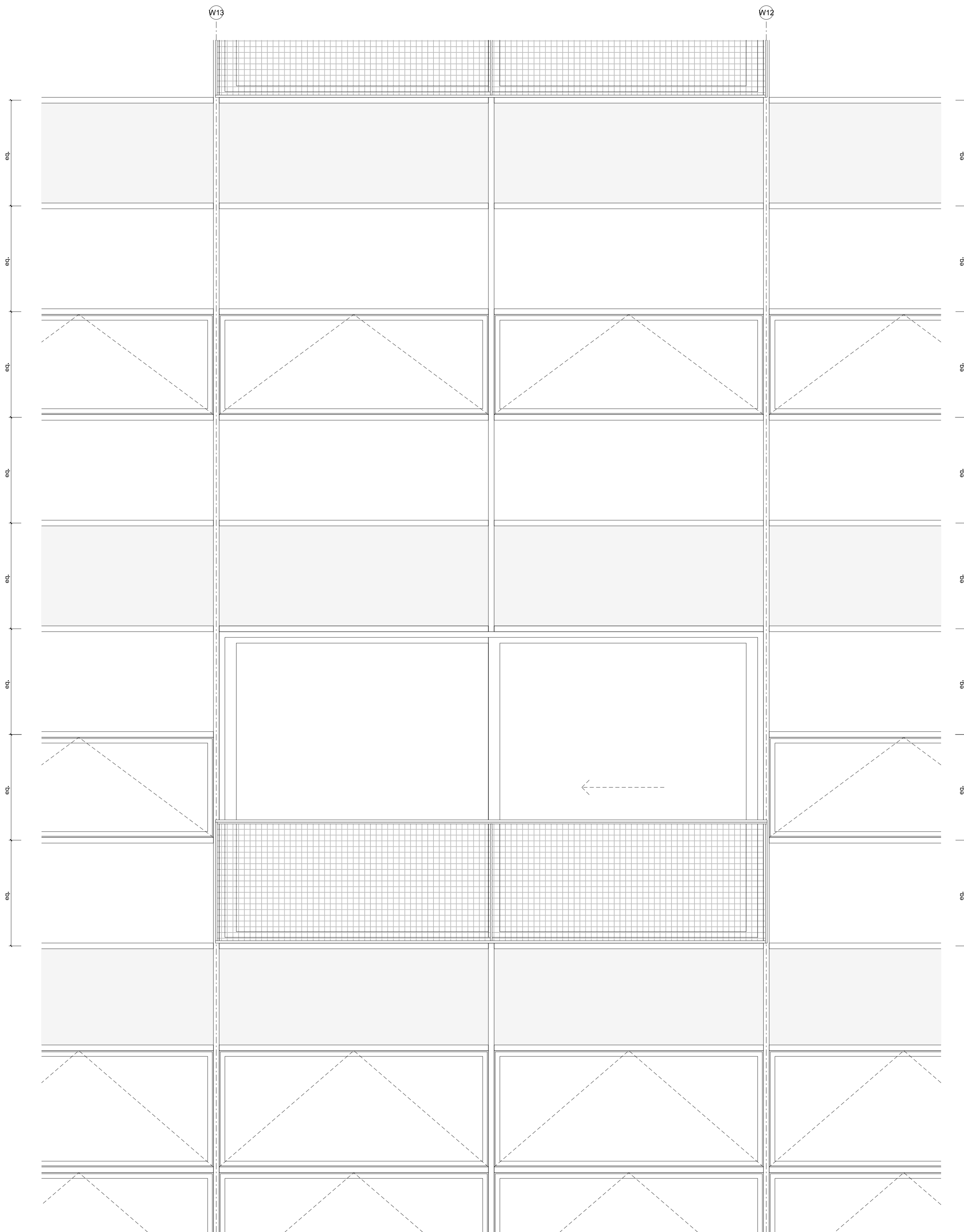
Rapier House, 40 Lamb Conduit St, London WC1N 3LJ
+44(0)20 7242 5422 www.6a.co.uk post@6a.co.uk
Do not scale from drawings. All dimensions to be checked on site. Errors to be reported immediately to the architect. Please read in conjunction with all relevant architect's, services, and structural engineers' drawings and specifications.
©6a architects

Grand Union House

| job | discipline | drawing | stage | revision |
|-----|------------|---------|-------|----------|
| 531 | A | 1380 | 2 | P1 |

Proposed Residential Elevations

| scale | date | status | drawn | checked |
|-------|------|----------|---------|---------|
| 1:50 | [A1] | 18.02.21 | STAGE 2 | LH MK |



| rev. | date | description | status |
|------|----------|-------------|---------|
| P1 | 18.02.21 | Planning | STAGE 2 |

6a architects

Rapier House, 40 Lamb Conduit St, London WC1N 3LJ
 +44(0)20 7242 5422 www.6a.co.uk post@6a.co.uk
 Do not scale from drawings. All dimensions to be checked on site. Errors to be reported immediately to the architect. Please read in conjunction with all relevant architect's, services, and structural engineers' drawings and specifications.
 ©6a architects

Grand Union House

| job | discipline | drawing | stage | revision |
|-----|------------|---------|-------|----------|
| 531 | A | 2010 | 2 | P1 |

Proposed External Wall Detail

| scale | date | status | drawn | checked |
|-------|---------------|---------|-------|---------|
| 1:20 | [A1] 18.02.21 | STAGE 2 | MK | JR |

1 PROPOSED EXTERNAL WALL ELEVATION
 SCALE 1:40 @A3

2 PROPOSED EXTERNAL WALL SECTION
 SCALE 1:40 @A3