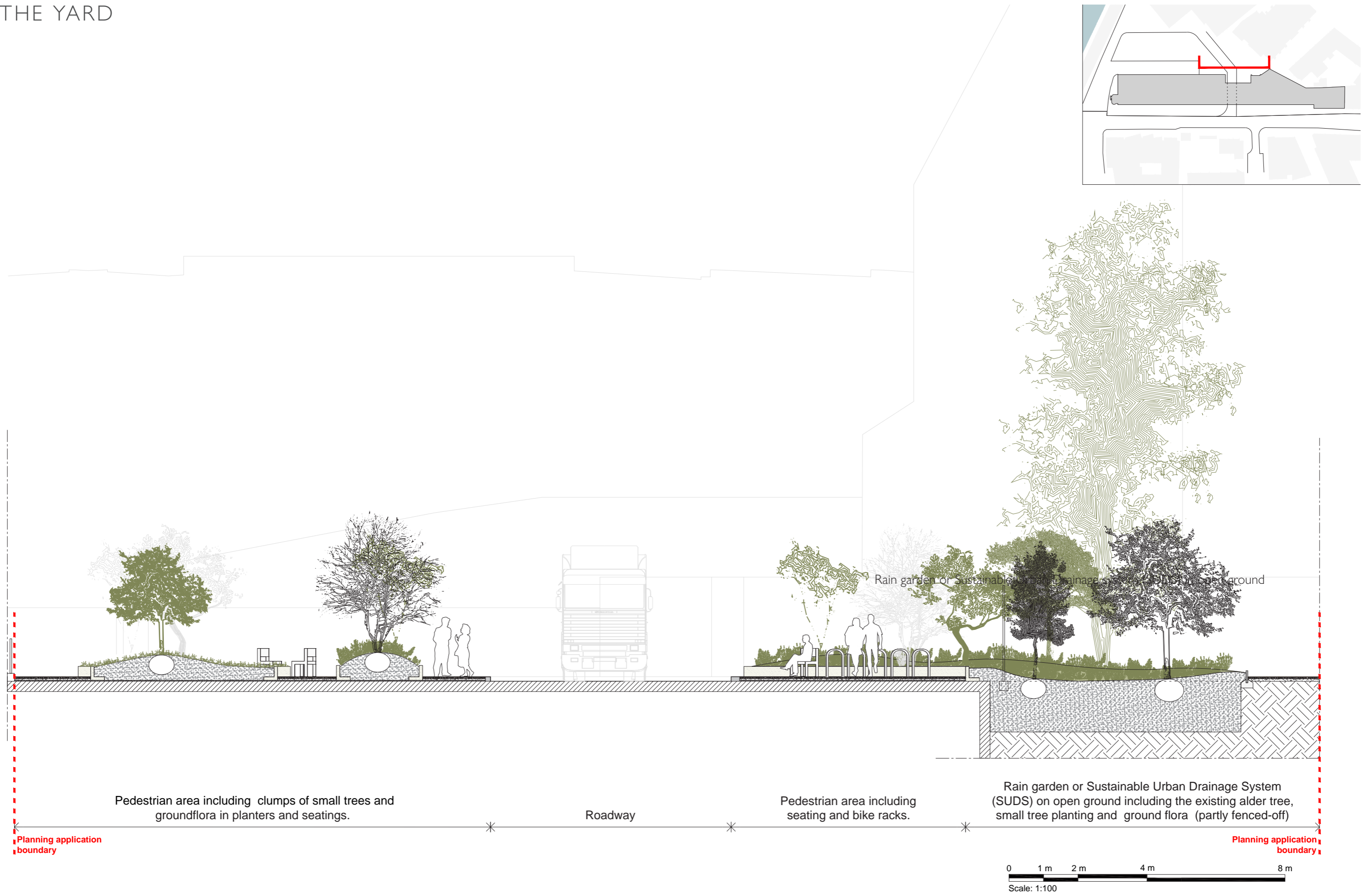


THE YARD



Street section 1/100@A3

THE YARD



Viburnum lantana / wayfaring tree



Acer campestre



Betula pubescens / Downy birch



Corylus avellana



Viburnum opulus 'Roseum' / European cranberrybush



Alnus glutinosa / Alder



Malus sylvestris / Wild Crab Apple



Pinus sylvestris and Pinus nigra



Chair 101 (Djao-Rakitine design)



Refurbished existing exposed aggregate concrete roadways

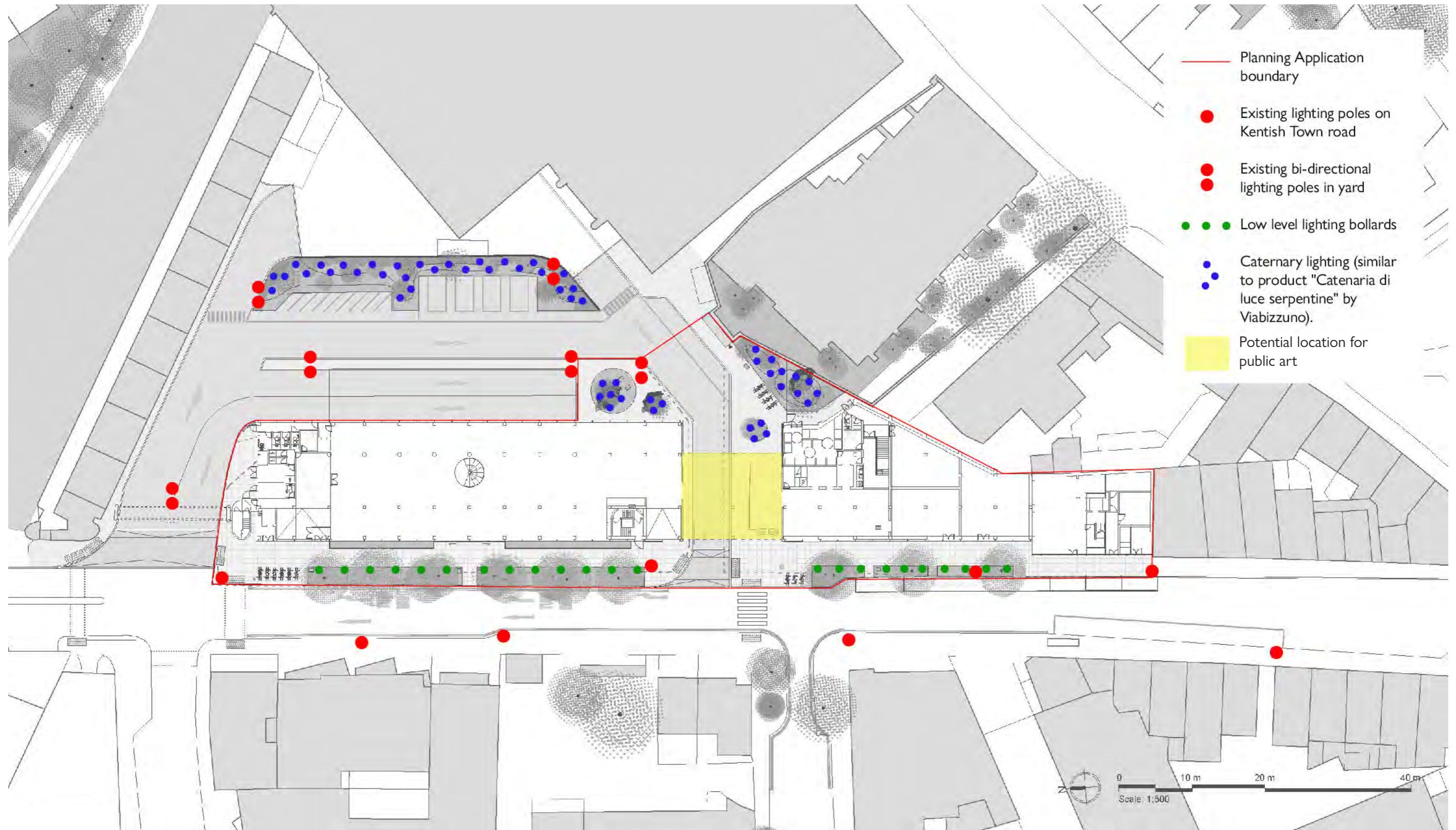


New resin bound gravel on pedestrian areas



Granite kerbs

LIGHTING STRATEGY



Proposed lighting strategy diagram.

The works shown outside of the red line will be delivered by the Freeholder and are not included in the current application.

LIGHTING STRATEGY

THE YARD: Existing bi-directional lighting poles refurbished, switched to LED lighting and painted in black (TBC) completed by low-level catenary lighting amongst planting to create animation, safety and reduce light pollution.



Catenary lighting amongst all planting. Similar product to *Catenaria di luce serpentine* by Viabizzuno

Existing bi-directional lighting poles

THE GARDEN STREET (along kentish Town road): Existing lighting poles completed by low-level lighting bollards amongst planting and along pathway to create animation and enhance visibility and safety.



Low-level lighting bollards amongst planting and along pathway (products shown: Hess, Bega)

Existing bi-directional lighting poles

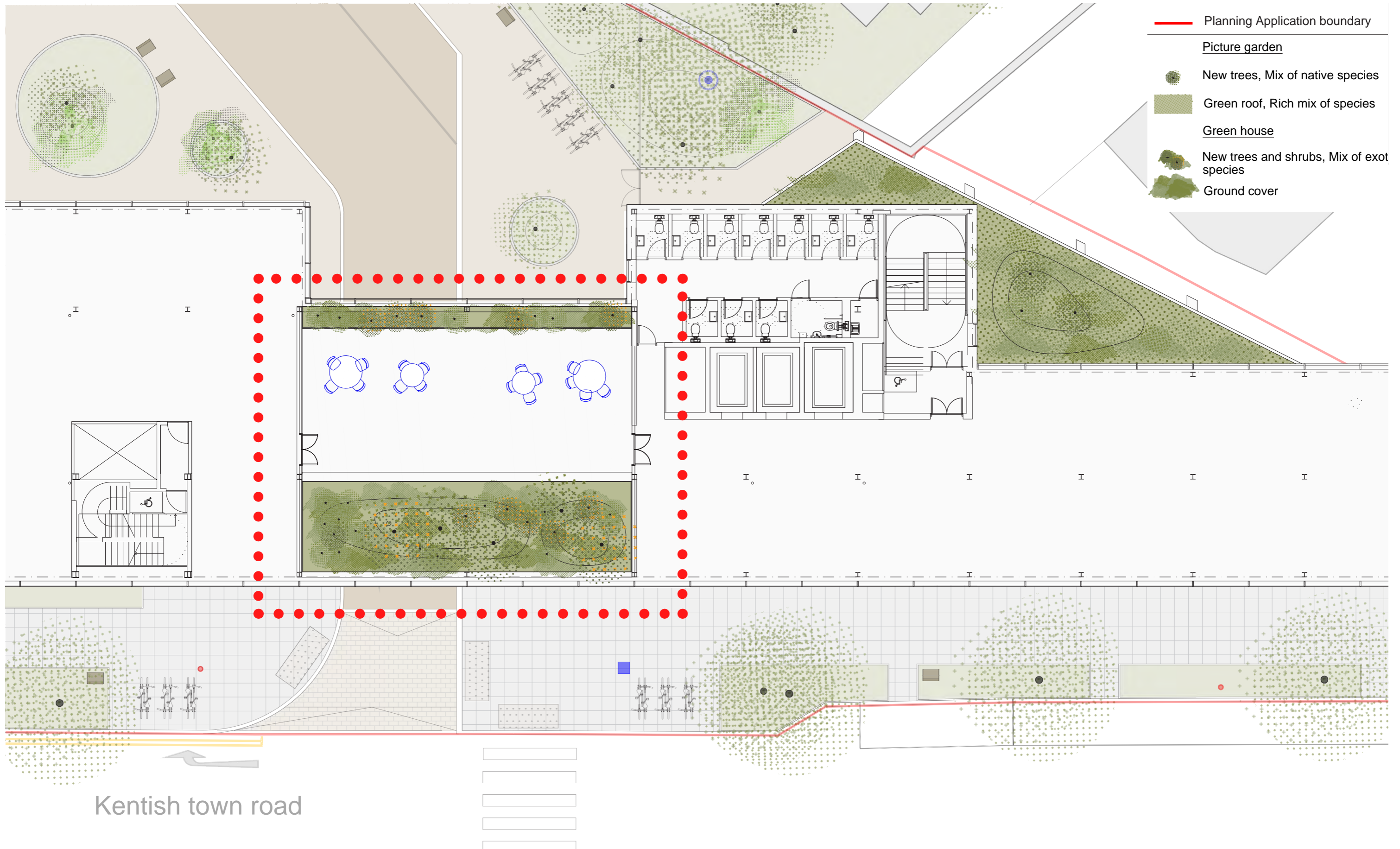
THE GREENHOUSE



View of the greenhouse from Buck street

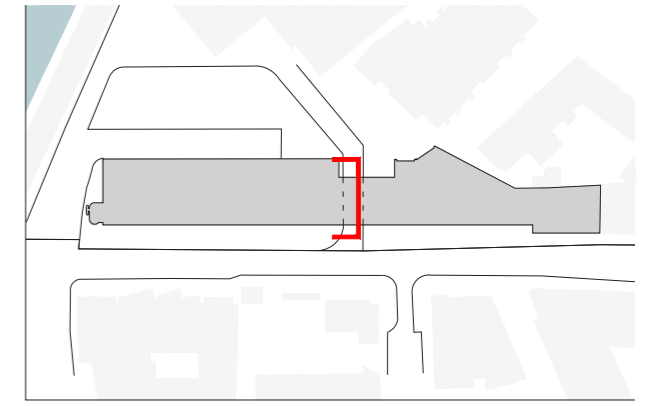
The greenhouse is a protected and naturally ventilated indoor environment with mixed mode capability depending on the tenant's use and fitout of the bridge areas. It is a conservatory, an exclusive working environment which planting palette includes exotic species as a result of its indoor condition. Appropriate volume of soil, soil specification as well as precise irrigation system (including water mist nozzles) and humidity control to keep an optimal 50-60% level of humidity, will be key to the success of the indoor planting.

THE GREENHOUSE

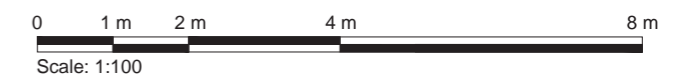


Plan 1/150@A3

THE GREENHOUSE

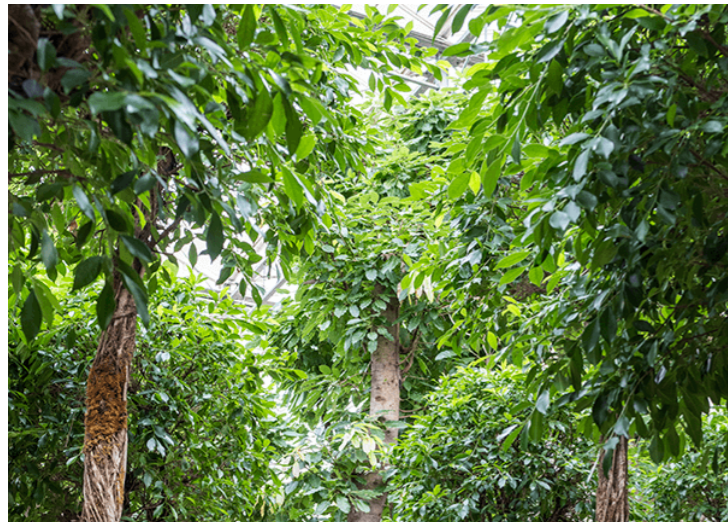
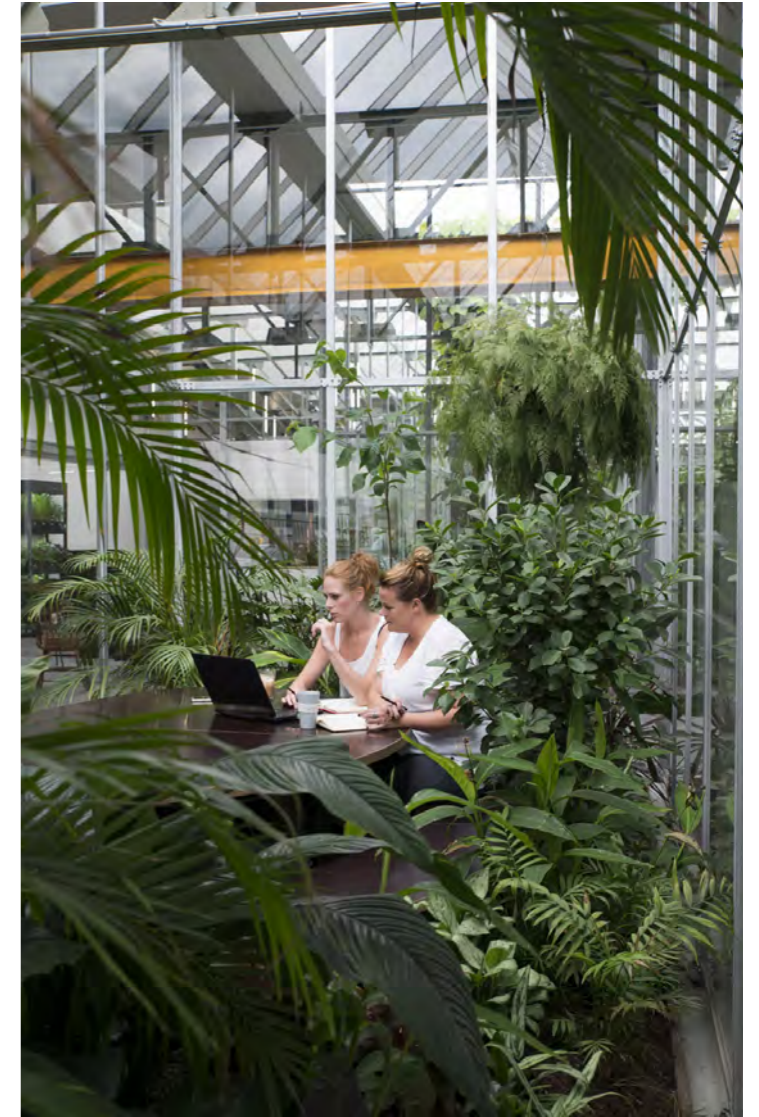


Greenhouse section 1/100@A3



THE GREENHOUSE

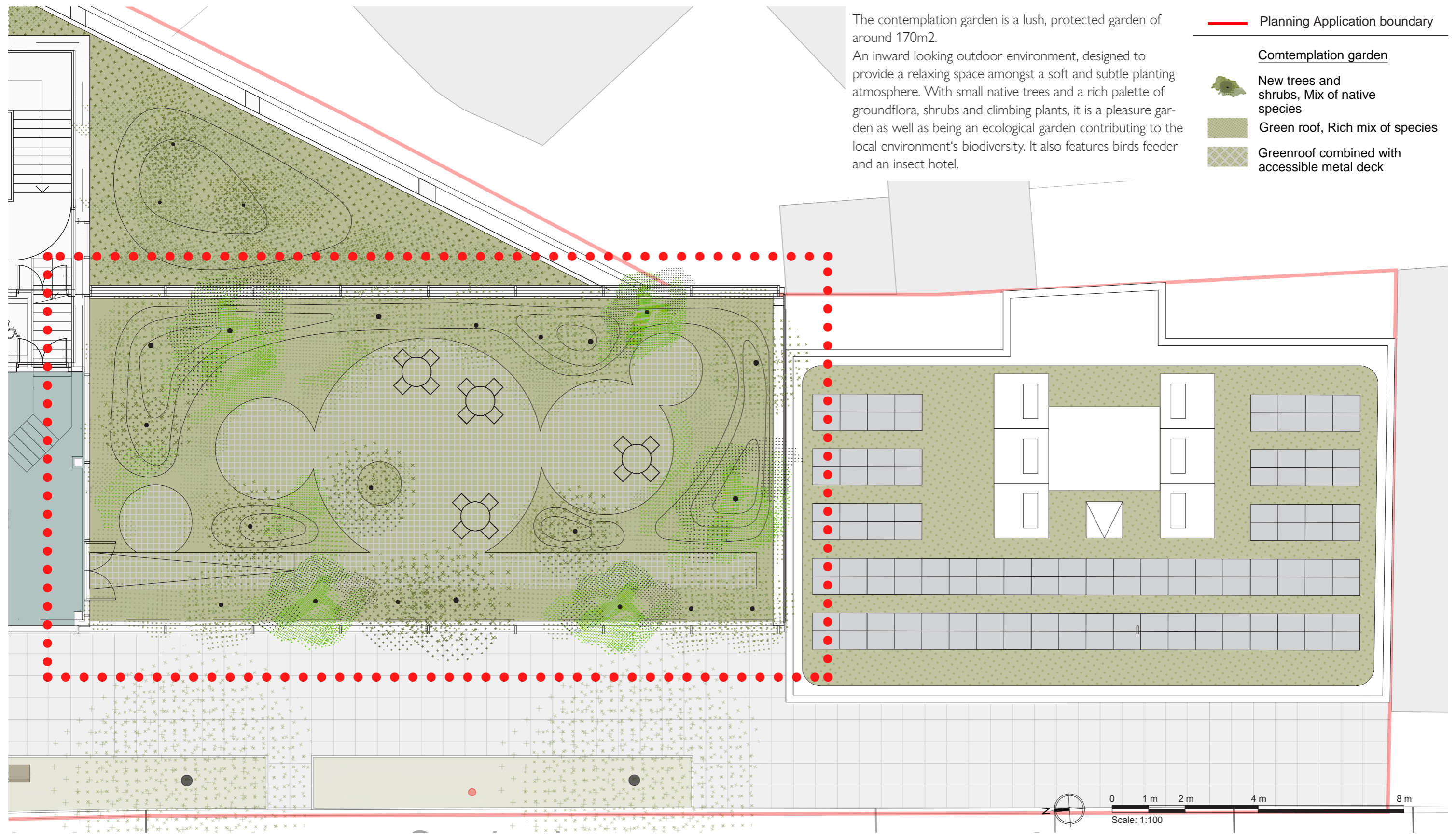
A BALANCED ENVIRONMENT FOR WORKERS AND PLANTING



Planting palette

LEVEL 3 GARDEN

A CONTEMPLATION GARDEN

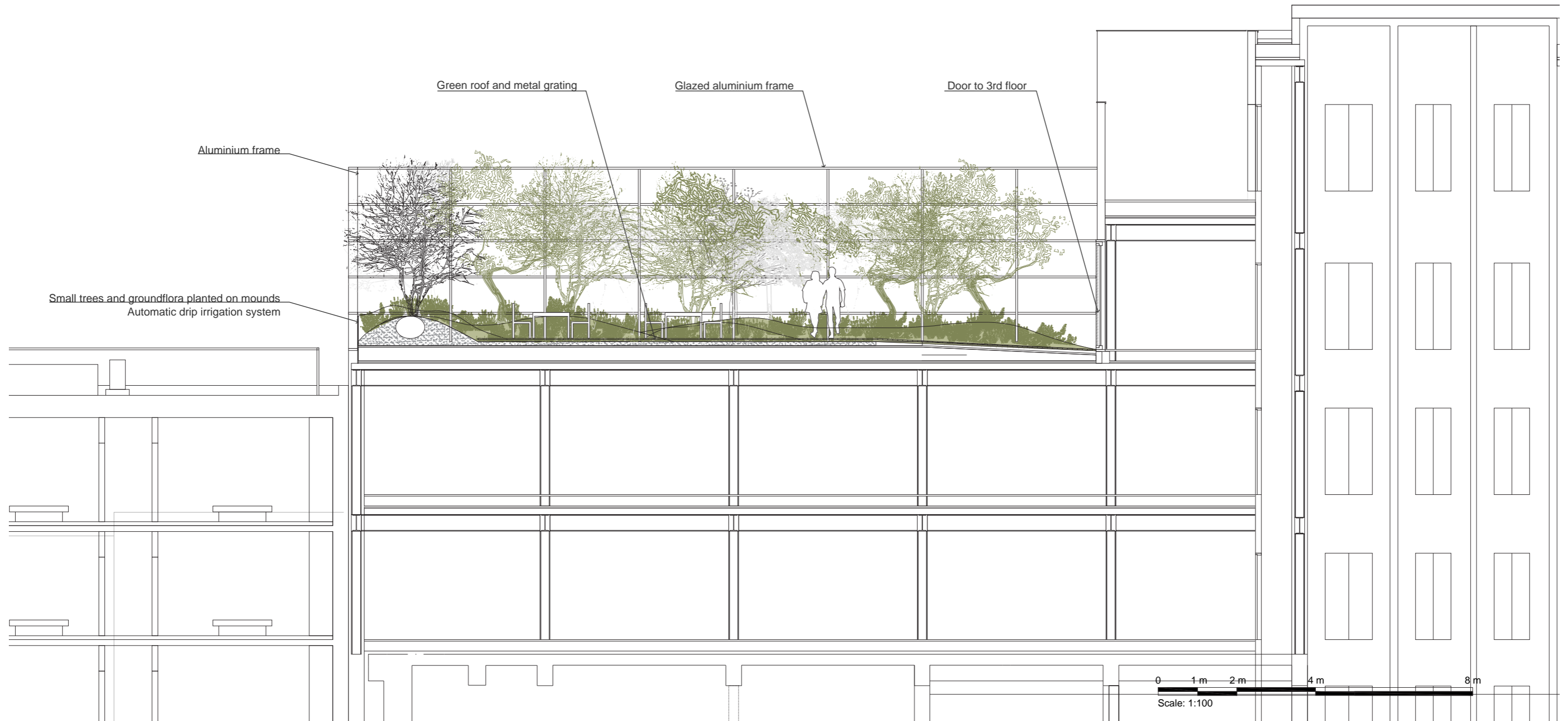
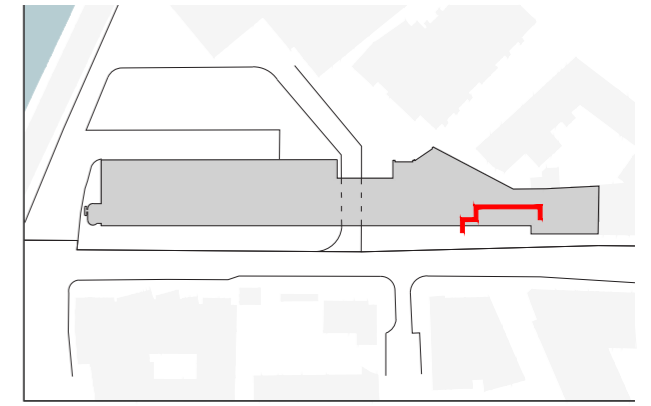


Plan 1/100@A3

LEVEL 3 GARDEN

A CONTEMPLATION GARDEN

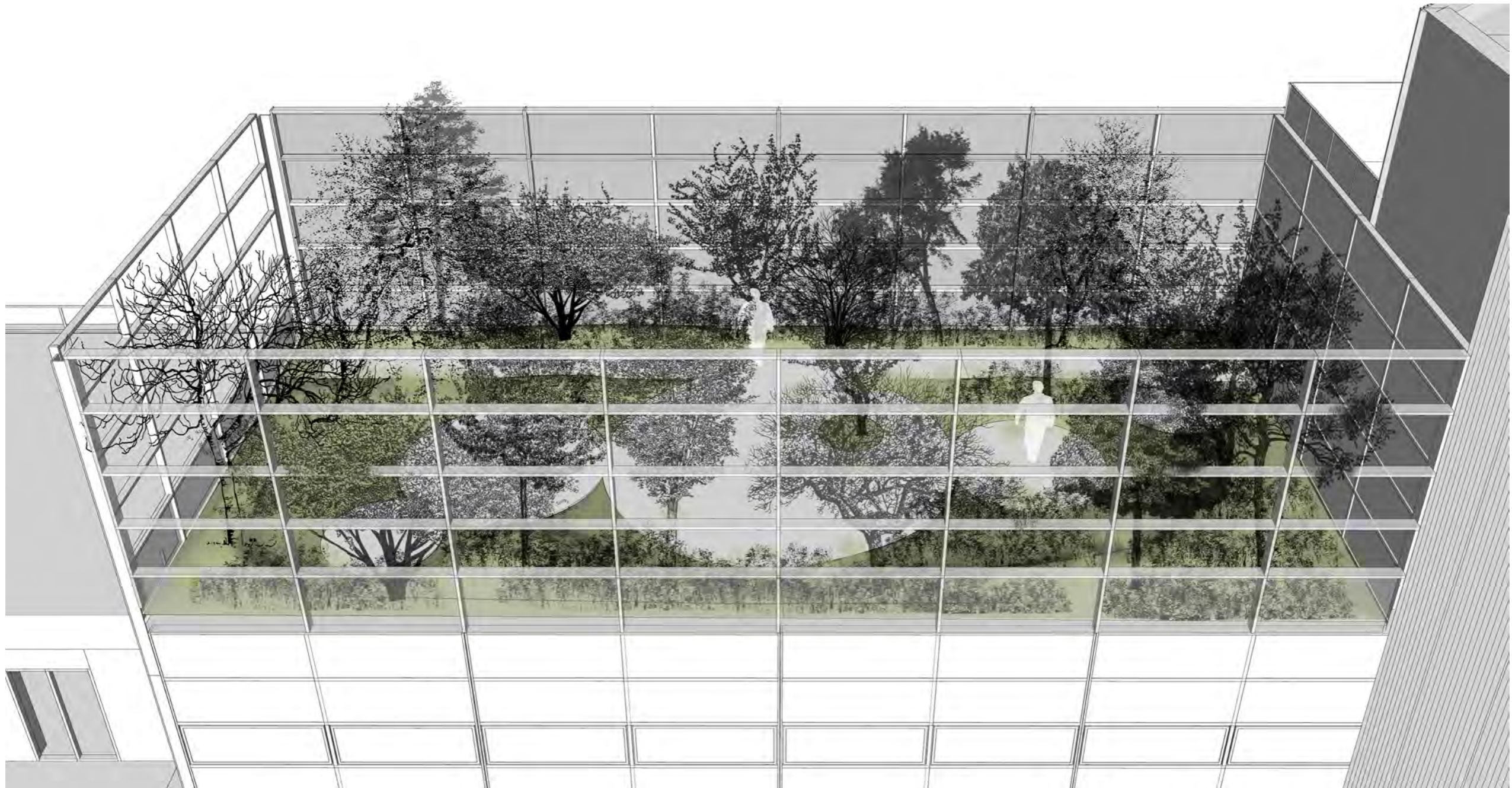
Compared with the 4th floor terraces and roof tops, the 3rd floor garden has a more intensive type of vegetation including more important soil depth (up to 650mm of normal soil).



3rd floor garden section 1/100@A3

LEVEL 3 GARDEN

A CONTEMPLATION GARDEN



The contemplation garden is a biodiverse, protected and introverted environment